

'Culture' coming to Sheldon

From Staff Reports

The Sheldon Memorial Art Gallery and Sculpture Garden will present "A Sense of Culture: Photography from the Permanent Collection" from Aug. 29 to Nov. 26.

The exhibition features photographs selected by guest curator David Jacobo from the Sheldon's permanent collection. Work by 13 artists from five countries will

Jacobo describes the exhibition as a study that allows artists and photographers to reflect on how issues such as race, gender, geography and nationality have shaped their visions.

The Sheldon, 12th and R streets, is open Tuesday through Saturday from 10 a.m. to 5 p.m., Thursday through Saturday evenings from 7 to 9, and Sundays from 2 p.m. to 9 p.m. Admission to the exhibition is free.



Courtesy of 20th Century Fox

Keanu Reeves stars as Paul Sutton in "A Walk in the Clouds," directed by Alfonso Arau.

Clouds

Continued from Page 17

While Alberto marauds about trying to rid his family of the "gringo," his father, Don Pedro Aragon, takes Paul under his wing. Anthony Quinn gives a sparkling performance as the family patriarch.

The film is sprinkled with uproariously funny scenes.

In one, Victoria's mother is pre-

paring her own bed to be used by the "newly-wed" couple. Victoria offers to sleep in her brother's room, but Mrs. Aragon will hear nothing of it.

"In that tiny, little bed?" she says. And then, with a conspiratorial stare at Victoria and Paul: "You need room — to maneuver."

Alfonso Arau, who directed the phenomenally successful "Like Water for Chocolate," now has another great film under his belt. It's hard to imagine how he could outdo this one.

After some painfully cheesy dialogue, Paul offers to pretend to be Victoria's husband for one night, then pretend to abandon her.

Discount Coupons

Welcome Back Coupons to Help You Fine Tune Your Home or Car Stereo

Monster Cable

SAVE 15% Good on any Monster Cable purchase til 9-30-95

Boston Acoustics Car Audio

SAVE 15% Good on any Boston Car purchase til 9-15-95

Lanzar Subwoofers

SAVE 25% Good on any Lanzar Woofer purchase til 9-15-95

ALPINE Demos & Discontinued

SAVE 30% Good til Demos, one-of-a-kind are gone. Not applicable on new models

ADCOM

SAVE 20% Good on any ADCOM MSRP purchase til 8-31-95

Sherwood

SAVE 15% Good on any Sherwood Car Amplifier purchase til 9-15-95



CUSTOM ELECTRONICS

Lincoln 56th & "O" Omaha 7511 Pacific

Deadheads pay tribute to legendary guitarist

NEW YORK (AP)—Hundreds of followers of the Grateful Dead gathered Saturday in Central Park, dancing and paying tribute to the band's legendary guitarist Jerry Garcia.

Fans swayed to the beat of drums near a makeshift memorial strewn with candles and newspaper clippings. A sign proclaimed, "In Dreams We Trust."

Police issued some citations for illegal alcohol consumption, but no arrests were made.

The band's fans, known as Deadheads, came from as far away as Ohio to mourn Garcia, who died Aug. 9 in California.

"I came just to pay our respects. He inspired me for the last five years," said Helen Hoffman, of Dayton, Ohio.

Meanwhile, band spokesman Dennis McNalley said Garcia's ashes probably would be scattered at sea off Marin County, Calif., in a private ceremony.

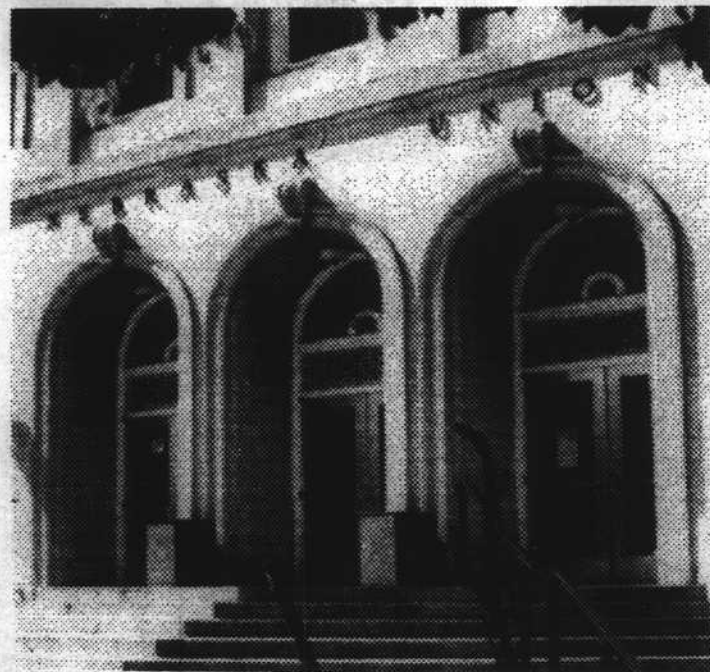
He said Garcia, who was an avid diver, had expressed wishes for his ashes to be strewn off the Northern California coast.

NEBRASKA UNIONS

Your Campus Activities Centers

City Union · East Union · Culture Center

WELCOME BACK STUDENTS



Monday-Friday
Saturday
Sunday

City Union

7:00 a.m.-11:00 p.m.
9:00 a.m.-11:00 p.m.
12:00 p.m.-11:00 p.m.

Monday-Friday
Saturday
Sunday

East Union

6:45 a.m.-11:00 p.m.
7:30 a.m.-11:00 p.m.
8:00 a.m.-11:00 p.m.

Monday-Thursday
Friday
Weekends by reservation only

Culture Center

12:00 p.m.-9:00 p.m.
12:00 p.m.-5:00 p.m.



CATCH



YOUR OPPORTUNITY

Starting Wage - Earn up to

\$6.25/hr. + Bonuses

Call our job hotline 466-8293

Days
Full-time
Mon-Thurs
7am-4pm
Friday
7am-1pm
Part-time
Mon-Fri
9am-3pm

Nights
Part-time: Minimum
15 hours weekly
Mon-Fri
Shifts begin at: 5pm & 6pm
Shifts end at: 8, 9, & 10pm
Saturday
Shift begins at 9am
Shifts end at: 12, 1, & 2pm

•Casual, Smoke-free environment •Paid Training at \$6.25 hr.
•Flexible Schedules •Advancement Opportunities
•Benefit Package



MATRIXx MARKETING INC.

a Cincinnati Bell company