

RAINBOW OF CULTURE Student Art Show '94 Reception 6:00 p.m., April 18 Culture Center

SMONEYS The CBS College Tour is coming to UNL. The University Program Council needs workers to run this event.

International Film Series THE OX April 17 at 3, 5, 7 and 9pm

AA Cruise ships now hiring. Earn big \$\$\$ + travel the world free!

Looking for an easy, affordable way to get your stuff home for the summer? We'll do it for you!

OUTDOOR TRACK MEET

The Men's and Women's Outdoor Track Meet will be held Sunday, April 17 at the Ed Weir Track directly west of the Coliseum.

Rainbow of Culture

1994 Student Art Show April 18-22, 1994 Pick Up Entry Form at Culture Center, 333 N. 14th or Student Involvement, 200 NU.

SKYDIVE

Jump out of a perfectly good airplane. Call Crete Skydiving Center, 464-2929

Students, Faculty, Attend the LARGEST business networking Social Event of 1994. Friday, April 15, Rock 'N Roll Runza, 4:30-6:30

Art & Music

Lincoln Orchestra Association/Shirley Irek & Robert Chumbley. April 19, 8pm, Lied Center. Ravel, Poulenc, Mussorgsky. Advance tickets 1/2 price with UNL Student ID.

Attention

Heath Aides are leaders on Campus! Now accepting applications for Heath Aides for the 1994-95 academic year.

Responsibilities include: \*Must attend and participate in all Training activities \*Must attend Peer Health 230 both Fall and Spring semesters

\*Provide minor first aid care (receive first aid/CPR certification) \*Act as a Health Center Liaison \*Act as referral and resource person for Living unit

Applications are available at the community Health Education Department, Room 12, Lower Level, University Health Center. For more information, call 472-7440.

Attention all officers of a group: We here at Group Challenge would like to invite you to give Group Challenge a try!

ATTENTION ALL STUDENT FOUNDATION MEMBERS: we will be playing volleyball with the Foundation at P.O. Peers, Thursday at 5:30.

Bowling Night

Join the G.L.S.A. Thursday night at 7pm in room 234 of the NU for a ride to alley. Bring \$5. For more info, call 472-5644.

Cash in a Flash at the Cash Depot. Delayed check cashing. The little brown house at 2012 South 10th, 476-7212. Monday - Friday, 9:00 a.m. to 6:00 p.m., Saturday 9:00 a.m. - 2:00 p.m.

Cellular Phones ARE affordable! Emergency/Security plan only \$14.95/month. Easy payment and phone leasing available. LT&T Cellular Agent. Must be 19. 432-8050 for appointment.

Congratulations to the International Student Organization on being named the March Organizer of the Month!

Also, Congratulations to Jason Jorker of MASA, March Heart & Soul Winner!

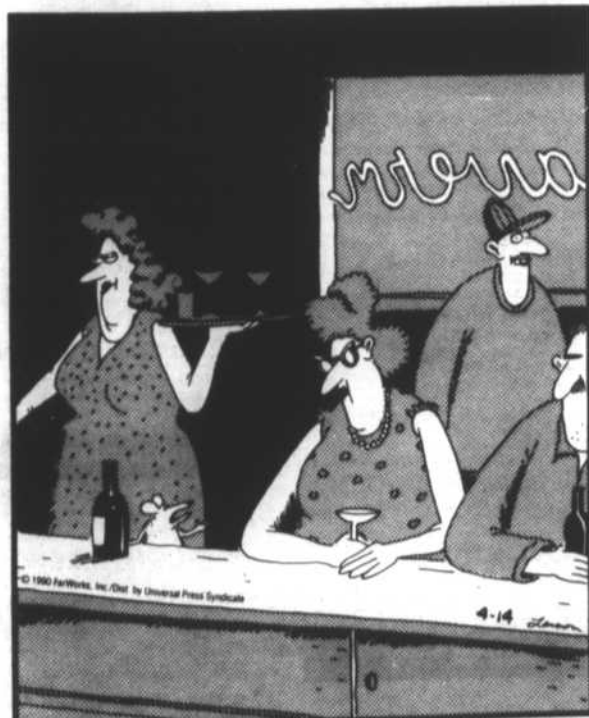
CRUISE SHIPS NOW HIRING - Earn up to \$2000+/mo. on Cruise Ships or Land-tour companies. Summer & Full-time employment available. No experience necessary. For information call 1-206-634-0468 ext. C5778.

Indigo Girls

On sale 5/10. For more info, dial 1-800-457-3027.

THE FAR SIDE

By GARY LARSON



"Well, we could go back to my place, but you have to understand - I'm serious when I say it's just a hole in the wall."

INTERNATIONAL EMPLOYMENT - Make up to \$2,000-\$4,000/mo. teaching basic conversational English in Japan, Taiwan, or South Korea.

Jane Powell

If you like "a little bit of jazz, a little bit of rhythm and blues, and a little bit of soul," then come see Jane Powell perform on April 18 at 7:30pm in the Union.

Study Abroad

Information meetings. Tuesdays at 6:30 p.m., Wednesdays at 4:00 p.m. International Affairs, 1237 R Street.

Summer Resort Jobs - Earn to \$12/hr. + tips. Locations include: Hawaii, Florida, Rocky Mountains, Alaska, New England, etc. For details call: 1-800-807-5950 ext. R5778.

THEOLOGY FOR LUNCH

Friday, April 15 Nebraska Union 12 Noon Brown Bag

CANTOR MICHAEL WEISSER reviewing The Culture of Disbelief by Stephen L. Carter

ALL FACULTY, STAFF & GRAD STUDENTS WELCOME

UFO CONFERENCE

April 22-24, 1994, Nebraska Center. Call 421-1701 for more information!

UNL Night With The Royals

Omaha/Kansas City Royals at Rosenblatt Stadium. April 21, 6pm. Tickets \$5, T-shirts \$8. On sale Wednesday through Friday from 10-2 in the Union.

UNO Aviation Institute

Pre-registration update: Lincoln classes available. Call 554-3424 or 1-800-858-8648.

215 Meetings

Actuarial Science Club

Meeting Thursday April 14 at 6:00 p.m. in the Nebraska Union. Room posted. Casualty Actuary speaker. Refreshments. All new members welcome.

ATTENTION SAA

Meeting is today at 4:30. This is our last meeting and we will recognize the seniors. Meet at the Neiharot Blue T.V. lounge.

Ecology Now

Meetings every Thursday 7:30 p.m. Nebraska Union, room posted.

Interested in Physical Therapy?

P.T. Assistants speaking, Thursday April 14th, 7pm. Health Center Conference rooms A-C. PRE-PHYSICAL THERAPY CLUB. New members welcome! No fee.

Parking Advisory meeting schedule for 3:00, Thursday, April 14th. At City Union Room TBP.

Pre-Pharmacy Club

Wednesday, April 20th at 8pm. Bryan Memorial Hospital. Bryan West Room. Questions?, Call 1-800-626-8431.

Students, Faculty: Attend the LARGEST business networking Social Event of 1994. Friday, April 15, Rock 'N Roll Runza, 4:30 - 6:30.

TCAB

There is no meeting today, but we will be having one on the 21st.

UNL Men's Lacrosse

First home game in history of school vs. UNO. Saturday at Whittier Field (23rd & Vine) at noon.

UNL Pre-Law Club

Meeting 6:00 in Union. Discussion on upcoming CSAT exam. Room posted.

220 Greek Affairs



BIRTHDAY WEEK

13th - Andy "Hotpants" Vuko 14th - Betty "Munsen" Camaro 15th - Kelli "Punk" Miller Chucky Cheese rocks the house!

ATTENTION GREEKS: Summer work. Make \$470/week. Interviews being held today and tomorrow, April 13th & 14th, 4:00pm and 6:00pm at Hamilton Hall Rm. 121. Be prompt. If conflicts, call 477-7268. Southwestern Co.

Congratulations to Rachael Brandl for getting elected to Arbitration Board.

Your Alpha Chi Sisters

FH

Thanks for the terrific BBQ on Monday! Get excited for a great Greek Week!

ΒΘΠ ΔΓ FH

From the ladies of Alpha Delta Pi

ΓΦΒ ΔΤΔ Sandbash '94

P.O. Pear's April 16th & 17th. Call Heather 436-9497 or Dave 436-7929 to register.

ΚΑΩ

Congratulations to Kristen Marshall and Matt Maser (Alpha Tau Omega) on their pinning.

Congratulations also to Nicole Bettger and Becky Barrett for being selected to UNL Yell Squad and to Michelle Matthies for making UNL Dance Squad. We're proud of you!

Love, Your Theta Sisters

ΚΔ

Congratulations Laurel K. for being selected Rush Chair for Sigma Alpha Iota Music Honorary. We are so proud of you!

ΠΒΦ

Shawnda Killham, Congratulations on your acceptance to Columbia, Indiana and Rockhurst O.T. Schools. You are a stud!! Love Your Pi Phi Sisters

Staci Grueber, Congratulations to your acceptance to Creighton P.T. school. Kudos to you! Love, Your Pi Phi Sisters

Tori Davis, Congratulations on your acceptance to... EVERYWHERE... Law School!!! KHAI KHAI! Love, Your Pi Phi Sisters

Tammy Pihlal, Congratulations on your acceptance to the UNL Psychology Program. Love Your Pi Phi Sisters

Marianne Hallinan, Good luck at Michigan. Love, Your Pi Phi Sisters

ΣΦΕ Seniors

WE HEAR WEDDING BELLS! The Phi Phi Seniors

ΣΧ

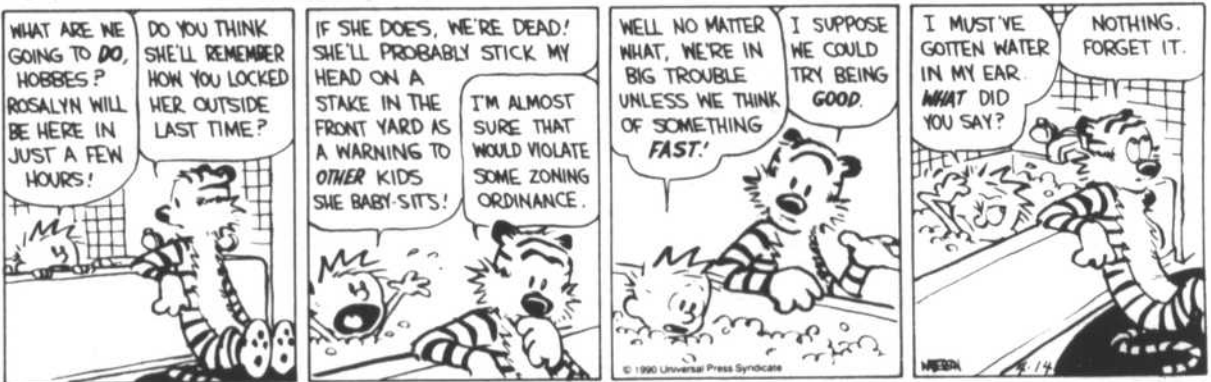
Fight Night April 16th, 7 p.m. 4-H Building at State Fairgrounds.

ΣΦΕ

Good job to Ryan Dowd on obtaining your B.G. degree. We all knew you could do it.

Congratulations to Jeff Theisen on winning the Bean Pole award. You're the beaniest around. The Men of Sigma Phi Epsilon

Calvin and Hobbes



Crossword Edited by Eugene T. Maleska

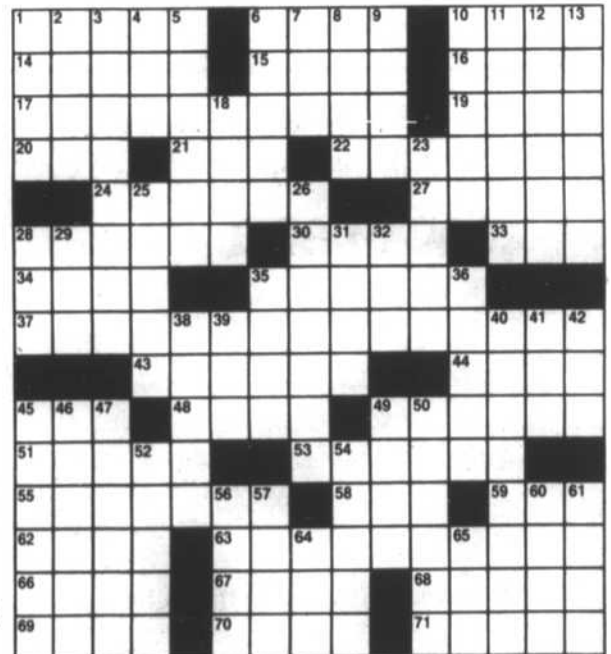
No. 0425

ACROSS

- 1 Total 6 Sprag 10 Musical inspired by T. S. Eliot 14 Stand of trees 15 Financial deal 16 Metal eqpt. 17 Fabulous; visionary 19 Athirst 20 Siamang 21 Group of whales 22 Abundant food fish 24 "... Can You --- Dime?" 27 Host 28 Capable of movement 30 S. African village 33 Forage plant 34 Wanderlust appeaser 35 Increase 37 Certain students of human behavior 43 Thigh armor 44 Grayish yellow 45 Miss Piggy, e.g. 48 Indian storeroom 49 Respect 51 Coarse linen cloth 53 "A mother is not a person --- on ..."; D. C. Fisher

DOWN

- 1 Taj Mahal city 2 Gutta 3 Of a household 4 Pulp fruit 5 Correspondent of a sort 6 Group of lions 7 --- room, as at camp 8 Colorful fish 9 Chopin was one 10 Flock of finches 11 Counsel 12 Ivy or morning glory 13 Flocks of herons 18 Sped 23 Excavated anew 25 Larklike singing bird 26 Elaine's home 28 Ida and Ossa: Abbr.



ANSWER TO PREVIOUS PUZZLE



- 29 Gold, in Peru 31 TV part 32 G.I.'s overseas address 35 Threshold 36 Michelangelo sculpture 38 Should, with "to" 39 Life hist. 40 Screenplay 41 Three, in Roma 42 Aggregate 45 Like Yosemite or Yellowstone Park 46 Troupial 47 Shake 49 Pwr. source 50 Say "bon voyage" to 52 Crispin's products 54 Plump plus 56 Persia today 57 Hacienda room 60 Berlin's "Say It --- So" 61 Parts of journeys 64 Machine part 65 Of the gums: Comb. form

230 Student Government

STUDENT GOVERNMENT CAMPUS WIDE VACANCIES

Have an impact on committees dealing with student related concerns. Positions open on 29 campus wide committees and for the Senate position to represent the Div. of Continuing Studies. Applications available in the ASUN Office, 115 Nebr. Union. Deadline for all positions is April 15, 1994.

240 Personals

Miss Juges, Yeeeeeeeee! Burger Barn! I simply LOVE an inside joke, don't you? Love, Leroy

245 Lost & Found

FOUND: Set of keys, 1 block South of Holdrege on 41st. 484-4456, to claim.

Lost: Chi Omega pin. Reward. Call 436-8620.

Daily Nebraskan

34 Nebraska Union 1400 R Street 68588-0448 (402) 472-2588 FAX 472-1761

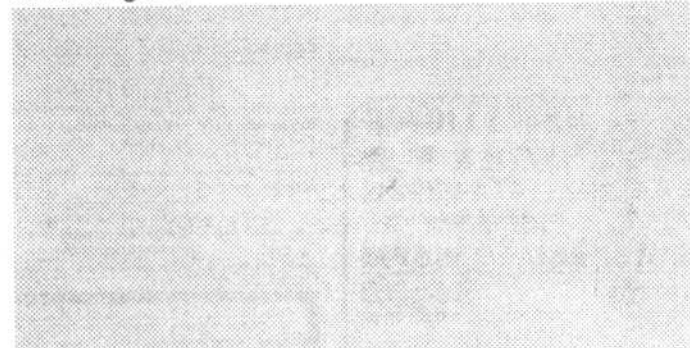
CLASSIFIED ORDER FORM

Name \_\_\_\_\_ Address \_\_\_\_\_ Phone \_\_\_\_\_

Student Rates: \$3.00 includes 15 words. Non-students: \$4.00 includes 15 words. \$ .15 for each additional word. \$ .75 billing charge.

Date(s) ad to run: \_\_\_\_\_

Advertising text: \_\_\_\_\_



Special repeat rates and features are available. For information call 472-2588 8:00-4:30 p.m. Classified Advertising Deadline is 2:00 p.m. weekday before publication.