

# Page One

## Paperback Book Exchange



We sell paperbacks at 1/2 the cover price, including books used in literature classes.

206 No. 13th 474-6316  
(Under the Douglas 3 Theater)

## The Birkenstock World Beat Collection.

(Visiting this planet for a short time only.)



Montana™

The World Beat Collection features new styles in rich, earthy colors. But they'll only be around this Fall. So be the first on your planet to get a pair.



The original comfort shoe.



### Footloose & Fancy

1219 "P" Street  
open Thursday until 8:30 P.M.

© 1993 Birkenstock is a registered trademark.

# Rains slow greek house projects

By DeDra Janssen  
Staff Reporter

Rush is a hectic time for sororities and fraternities.

It's even more hectic when the chapter house is under renovation.

But for members of several greek houses, summer renovations didn't stop them from having a successful rush.

Chi Omega housemother Barb Stickels said work on the house didn't hinder sorority members during rush. Members, however, were unable to move into the house until Aug. 10, two days after most sorority women returned to campus.

Renovations, which began in April, were delayed because of the rain during the summer, Stickels said, and alternate living accommodations had to be made until the addition is finished.

"A few girls are living with Lincoln relatives and some are kind of doubling up," she said.

The project, which is scheduled to be completed in five weeks, will add six new bedrooms to the house, along

with two large bathrooms, two laundry rooms, a computer room, a television room and a new housemother apartment.

"We wanted to have more girls living in," Stickels said. When the addition is completed, 67 women will live in the house.

But until the addition is finished, they will have to make do with what they've got, she said.

"The new addition is closed off from the existing house. We'll use the existing house for rush and tell the rushees about the addition," Stickels said. "It's very obvious from the outside that something's going on here."

Delta Upsilon fraternity also caught the remodeling bug, but housemother Linda Halbgewachs said renovations were close to being done.

"There are still a few things here and there — a few light fixtures and switches," Halbgewachs said. "It had better be ready by (Aug.) 15th."

Renovations, which began in March, include the addition of a third story with several new rooms and a change in the entryway's appearance, air conditioning and double air-lock

doors also were installed.

"It looks more like a fraternity now," Halbgewachs said.

Halbgewachs said that although rain slowed construction, the renovations did not interfere with rush and the men would be able to move in this week as scheduled.

Halbgewachs and the members are excited to come back to the new and improved house, she said.

"They're tickled to death," she said. "My favorite thing is the air conditioning."

Renovations on the Delta Tau Delta fraternity house also were delayed by this summer's weather. The project, which was to be completed before school began in the fall, will be done by Labor Day.

Chad Jaeger, a sophomore pre-physical therapy major, said a new roof was being put on and the entryway was being repaired. The house had water-leakage problems in the past.

A wheelchair ramp also was added to the house to comply with the Americans with Disabilities Act requiring university buildings to be accessible to the disabled.

# Fall rush attracts nearly 600 women

By Kristin Armstrong  
Staff Reporter

While most UNL students were watching the summer end, a group of mostly freshmen women was experiencing a new, Greek beginning by participating in the 1993 fall rush.

This year 575 University of Nebraska-Lincoln women participated in the four-day event which began Friday at campus sorority houses.

Rushees arrived in Lincoln Friday and moved into university residence halls. In the evening, the women attended a rush orientation, then broke up into 15 groups for brief tours of each sorority house.

Panhellenic President Lisa Sickert said the first day was designed to introduce the rushees to the greek system.

"We discuss problems moving into

the dorms, where they're from, shallow stuff," she said.

Rushees attended up to eight, 50-minute parties Saturday, and five on Sunday, depending on the number of invitations they received.

During parties, rushees toured the houses and visited with sorority members.

Rushees had to narrow their choices to three houses for Monday's final round of parties, each to last 90 minutes. From those three houses, rushees must list their preferences in order.

"Do not pass go, do not collect \$200, just make your choices in the order you want," Sickert said.

Monday evening, alumna from each house worked to match the women to sororities. The former members accomplished this by trying to meet the rushee's choice, and not necessar-

ily the choice of the sorority, Sickert said.

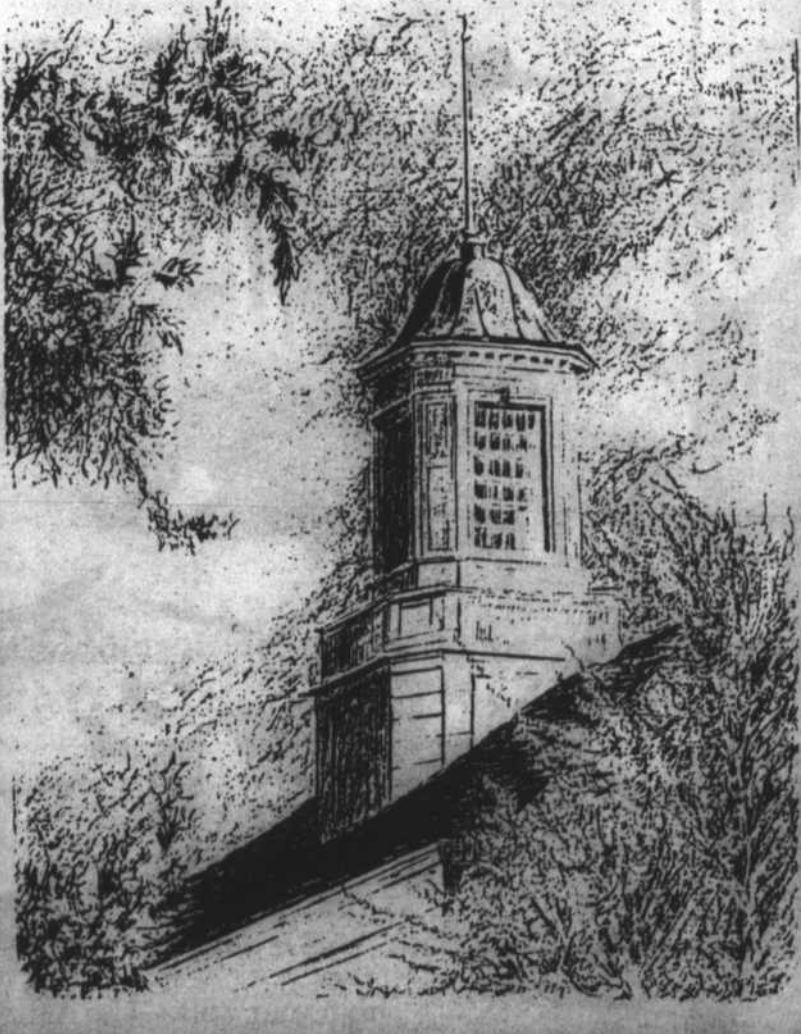
"It is a mutual selection process," she said. "The rushee has as much influence over what sorority they get into as the sorority itself."

To gain this influence, a rushee must have attended all parties and events, Sickert said. If she does this, then she is virtually guaranteed a place in a sorority.

Jayne Wade Anderson, director of greek affairs, agreed.

"There is a place for every young woman who wants to be in a sorority," she said.

Out of the 575 women who went through rush, 459 pledged a house, Anderson said. Those 116 who didn't pledge were a combination of women who withdrew before rush began, dropped out during rush or were not selected by a sorority.



Chancellor Spanier's  
State of the University Address

Friday, August 20, 1993, 8:30 pm, Lied Center

Faculty, Staff and Students Welcome  
Commencement breakfast served after the speech.

## ROCKIN' ROBIN PRESENTS A Special KZUM Radio Benefit Concert with World-Renowned Reggae Masters



# THE ITALS

FRI-SAT AUG. 20 & 21

ROCKIN' ROBIN  
1435 "O" ST.

All proceeds go to support your local Community Radio