

shoes in research

and chemistry engineering undergraduate and graduate programs, O'Leary said.

The biochemistry program has over 60 undergraduate students, O'Leary said. Those students will receive better educations with the Beadle Center's modern facilities.

Another important

mission is the Beadle Center's outreach program, O'Leary said.

A number of educational programs which will serve people around the state are in the works, he said. A few of those programs will include:

— Seminars where high school science teachers are brought up-to-date in

the center's areas of study.

— High school teachers participating in hands on research with the center's scientists.

— Production of science programs that will be broadcast statewide via satellite.

Don Weeks, director of the center for biotechnology, said the additional

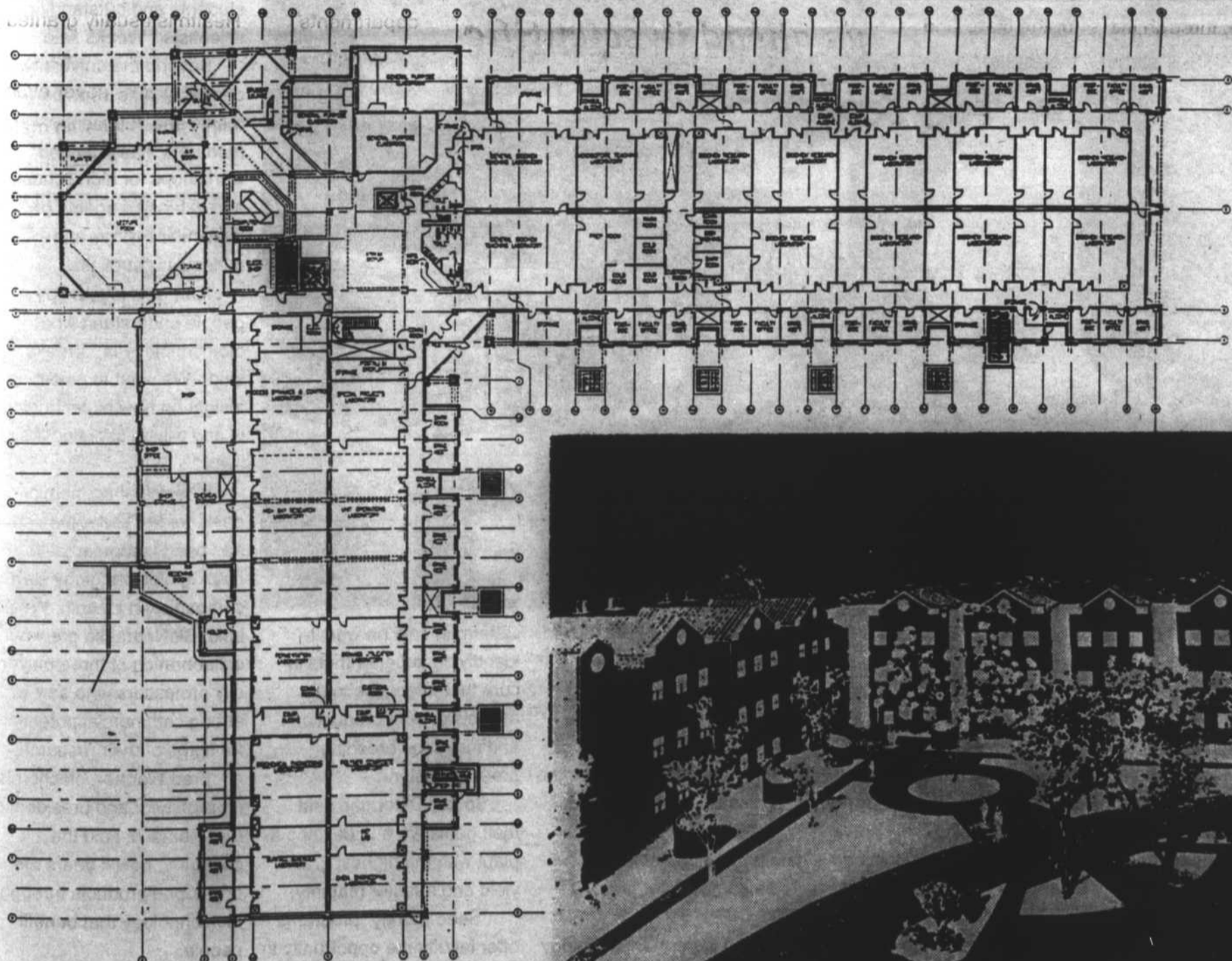
programs were vital to the Beadle Center's mission.

"The graduate and undergraduate programs, as well as the outreach programs, let people know about the economic and social impact the biosciences will have on our lives," Weeks said.

As the impact of biosciences research in-

creases, the Beadle Center will keep in step, O'Leary said.

"We intend to continue to develop strong and innovative programs in these areas, and to continue to serve the students of UNL, the state of Nebraska and the nation," he said.



Ground Level Floor Plan 

Scale: 1/8" = 1'-0"

SCOTT MAURER/SOWER