

Peer

Continued from Page 1

The group also looked for land grant or state institutions, especially those that were both the leading public research university and/or land grant institution in the respective states. In its report, the advisory group compared the proposed schools to UNL according to a number of factors, including UNL's:

- status as a land-grant and state university.
- 18 accredited fields.
- strong continuing education program.
- four faculty members in national academies.
- \$77,598,000 worth of research funding per year, as of 1990.
- 24,620 students enrolled.
- large public service role.
- total endowments, or gifts to the school, of \$201,153,000 per year,

according to Randal Haack director of budgets and analysis. All 10 proposed schools, as well as UNL, are accredited by the North Central Association of Colleges and Schools. Four of the proposed schools — Colorado State, Colorado, Iowa and Kansas — are not included in UNL's has a lower level of state support, and its continuing education program is not as notable. According to the report, the Uni-

versity of Iowa is included because it is a state university and in an adjoining state. Iowa is similar to UNL in that it shares 11 of the same fields of accreditation with UNL. It has six faculty members in national academies and has a strong continuing education program. Iowa differs from UNL in that it has a school of pharmacy; it is not a land-grant institution; it receives more research funding than UNL; and its endowments are lower than UNL's.

According to the report, Colorado State is different from UNL because it is only a land-grant university and not a state university, has much lower endowments than UNL and has a smaller public service role. The University of Colorado was included because it is a state university and is in an adjoining state. The report stated that Colorado shared two similarities with UNL: it shared nine of its 10 accredited fields with UNL, and its enrollment numbers were similar to UNL's.

But Colorado is different in that it is only a state university and not a land-grant institution. It has much lower endowments; it has 24 faculty members in national academies; it has more research funding than UNL, is not a state university and has endowments much lower than UNL's.

The University of Illinois was included, the report stated, because it was both a land-grant and state university and was one state removed from Nebraska. Illinois is similar to UNL in that it shares 13 of its 21 accredited fields with UNL and its endowments are close to that of UNL.

The report stated Illinois' differences from UNL included its 75 faculty members in national academies and its high level of research funding.

According to the report, the University of Minnesota was included because it was both a land-grant and state university and was one state removed from Nebraska.

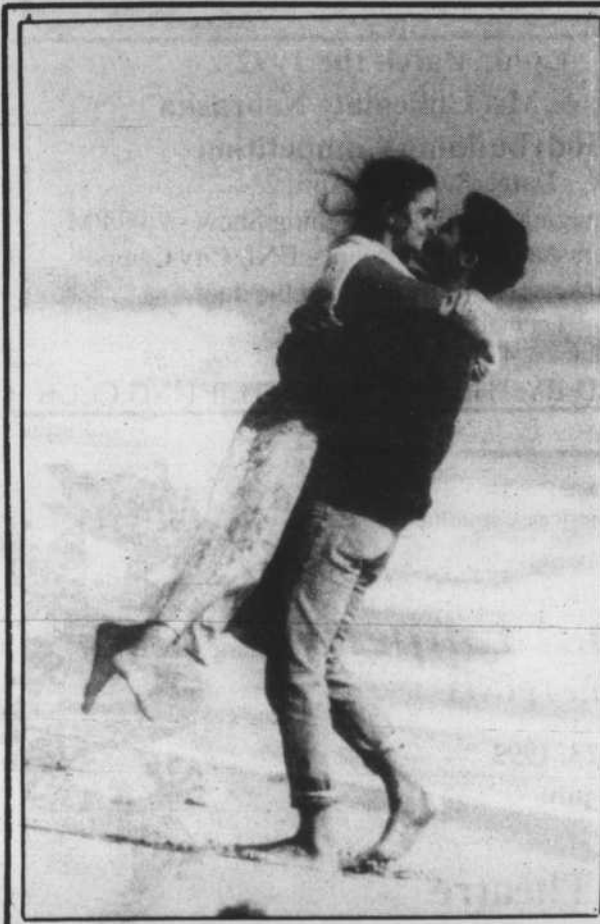
It is similar to UNL because it shares 14 fields of accreditation with UNL and has a psychology department.

The University of Minnesota differs from UNL in that it has 46 faculty members in national academies, and its research funding more than triples and its endowments more than double those of UNL.

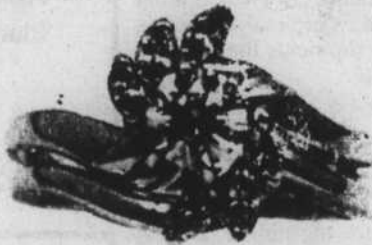
The University of Missouri was included because it was geographically proximate to UNL, the report stated.

It is similar to UNL in that it shares 11 accredited fields with UNL and its research funding and endowments are within UNL's range.

The report stated that Missouri differed from UNL in that it had schools of social work and nursing, had a school of library and information science and had only one faculty member in a national academy.



I knew she had simple tastes. So I made sure her diamond was simply incredible.



The Quality You Can Expect at Prices You Can Afford.

Sartor Hamann
JEWELERS

Special students financing available
1150 'O' St. • Gateway Shopping Center



Even dorks can get jobs at the Daily Nebraskan

Anastasia and Elliot both got exciting and challenging jobs at the Daily Nebraskan. You can, too.

The Daily Nebraskan is now accepting applications for artists, copy editors, photographers and reporters for the news, sports and arts & entertainment sections for the fall staff. Pick up an application and sign up for an interview at the DN office, 34 Nebraska Union.

Come join Anastasia and Elliot; work at the Daily Nebraskan.

UNL does not discriminate in its academic, admissions or employment programs and abides by all Federal regulations pertaining to the same.

The University of Kansas was included because it is a state university and is in an adjoining state, according to the report.

The report stated Kansas was similar to UNL in that it shared 13 accredited fields with UNL; it was one of three proposed schools with a psychology department; it had seven faculty members in national academies; its research funding and endowments were similar to UNL's; and it had a strong reputation in continuing education.

The only difference between the two schools indicated in the report was that Kansas was not a land-grant institution.

Six of the remaining schools in the proposed peer group are listed in the current peer group. They include: Ohio State, Purdue, Iowa State, Illinois, Minnesota and Missouri.

Ohio State University was included because it was both a land-grant and state university.

The school shares 14 fields of accreditation with UNL, and has seven faculty members in national academies.

But Ohio State has schools of social work and nursing, dentistry and pharmacy, biological sciences and optometry, a school of social and behavioral sciences and a school of math and physical sciences. Its research funding more than doubles that of UNL and its endowments are much higher.

Purdue University was included because it was a land-grant institution, had strong agricultural and agribusiness programs and research and was the only school on the list with an animal-technology department.

Purdue shares nine accredited fields with UNL, has a construction-education program and has similar endowments.

The report stated that Colorado State University is included because it is a land grant institution and is in an adjoining state.

Colorado State is accredited in 10 fields that UNL is; it is one of three schools with a construction education program; it has five faculty members in national academies; and it has a similar amount in research funding and enrollment numbers.

Twisters' Storewide Birthday Sale
Wed., April 22 through Sun., April 26

25% OFF

ALL Jewelry 

Don't throw us away


Association for Retarded Citizens.

MIDWEST
Sound & Lighting
Spring Madness
SALE
April 23-24-25

2324 "O" Street Lincoln, NE
GREAT DEALS ON GREAT EQUIPMENT

Here's a sample:

- Rapco 25' Low Impedance Mic Cable\$9⁹⁵
- "Shure"-Type Microphone Clips\$1⁹⁵
- Par 36 Rainlights\$26⁰⁰
- Shure SM-57LC Microphones\$95⁰⁰
- Ultimate Support Microphone Stands\$23⁹⁵
- Grundorf 4 Space Equipment Racks\$99⁰⁰
- Rosco Fog Juice, Litre Bottle\$9⁹⁹
- Ampex 456 Recording Tape (1/4" X 7")\$8⁵⁰

EVERYTHING IN THE STORE
REDUCED 15% to 60%