

SUMMER

Daily

NEBRASKAN

THURSDAY
JULY 26, 1990
VOL. 89
NO. 161
UNIVERSITY OF
NEBRASKA-
LINCOLN

This Week:
UNL hosts Prague students.
--Page 2
'The Pirates of Penzance'.
--Page 5
1990-91 basketball schedule.
--Page 6

New requirement to affect students' teaching assignments

By Christine Pillard
Staff Reporter

A new requirement implemented last year for the UNL Teachers College will affect student teaching assignments in the fall, according to Alvah Kilgore, associate dean of the college.

The change requires students to have substantial teaching experiences in schools with at least a 10 percent minority enrollment.

All Omaha Public Schools meet this requirement, Kilgore said, but only 15 schools in Lincoln do. There are schools in other parts of the state that meet the percentage, he said.

The requirement is part of the Teachers College Multicultural Enrichment Plan, Kilgore said. It is designed to prepare students for the future, and the future is cultural diversity, he said.

"Every one of our graduates should be able to teach anywhere in the United

States," he said.

Students have two opportunities to meet the field experience in cultural diversity, Kilgore said. It can be completed when students instruct for their "teaching methods" class or during the semester-long student teaching assignment.

Students who complete the requirement during the methods portion of their program may student teach in a school not meeting the minority percentage, Kilgore said. Students who

already have completed their methods class, however, must student teach in schools meeting the minority percentage, he said.

Most students who had to change their preferences for student teaching assignments did so graciously, Kilgore said, but there were a few who were not satisfied.

Students are not the only ones who are affected by the change. Schools that are accustomed to student teachers may see fewer of them this year.

Kilgore said officials from schools not meeting the percentage such as Millard Public Schools, Papillion/LaVista Public Schools and certain schools in Lincoln understand the goal of multicultural diversity experiences for student teachers, but are sorry they will not be receiving as many students from UNL.

This will be a transitional year, Kilgore said, and the college still has some things to work out in implementing the new requirement.

UNL director resigns post

By Jennifer Dods
Staff Reporter

Tom Krepel, director of university relations and assistant to the chancellor at the University of Nebraska-Lincoln, has resigned his post to take a position in Minnesota effective Sept. 4.

Krepel will become an associate professor at St. Cloud State University in St. Cloud, Minn., in the Center for Educational Administration and Leadership.

Krepel, who has been at UNL for four years, said his experiences at UNL will provide a background for his teaching position at St. Cloud. Before accepting the UNL position, Krepel was an assistant professor at the University of New Orleans for three years.

He said the most exciting thing about his job was its variety. His responsibilities ranged from coordinating a visit from President Bush to working with Farm Aid II.

Krepel said he thought he had three major accomplishments at UNL.

One was an increase in employee and faculty salaries, which he said he worked on for four years. Higher salaries make UNL more competitive with other universities, he said.

Another accomplishment, he said, is the improved relationship between UNL and the technical and community colleges in the state. Krepel said he worked on allowing easier credit transfers and establishing joint projects, such as learning centers.

Divestment compromise offered

By Jana Pedersen
Editor

UNL Academic Senate President James McShane on Saturday offered the NU Board of Regents a "reasonable kind of compromise" to faculty members' concerns over the NU Foundation's South African investments.

The foundation could follow the example set by the Merrill Lynch investment company, McShane said.

He said Merrill Lynch keeps a list of companies that do business in South Africa and will not invest in those companies unless a client makes a specific request for such an investment.

If the foundation were truly worried about South African investments, it could employ a similar system of selective investment, he said.

"(If the foundation) were willing to say,

Krepel said the third highlight of his job was working to create the Davis Scholarship Fund, which uses money from public and private resources for minority student undergraduate scholarships at UNL.

"There's no other way to describe my four years here than a heck of a lot of fun," he said.

Krepel won't be involved as much with administrative policies at St. Cloud, but he said he is looking forward to getting back to teaching. At his new post, he will teach classes such as education policy and research methods, he said.

"I've missed the grad students, my research and teaching," he said.

But Krepel also said he will miss Nebraska, his friendships and the teamwork at UNL. The native Nebraskan received his bachelor's, master's and doctorate degrees from UNL.

"There are some really great people at this institution. UNL has a very solid future," he said.

Though the decision to leave was hard to make, Krepel said he thought the time was right.

"There's always a time to move on. It's a rare opportunity to go back to something I enjoy immensely," he said.

St. Cloud State University has 17,000 students and is a member of the Minnesota State University System. The Center for Educational Administration and Leadership is a graduate program within St. Cloud's College of Education.

"Well, we're insufficiently unsure about this, but for people who... would like to invest in this particular area, we might be willing to accept it, although under ordinary circumstances we don't invest our money here," it seems to me that would be a reasonable kind of compromise," McShane said.

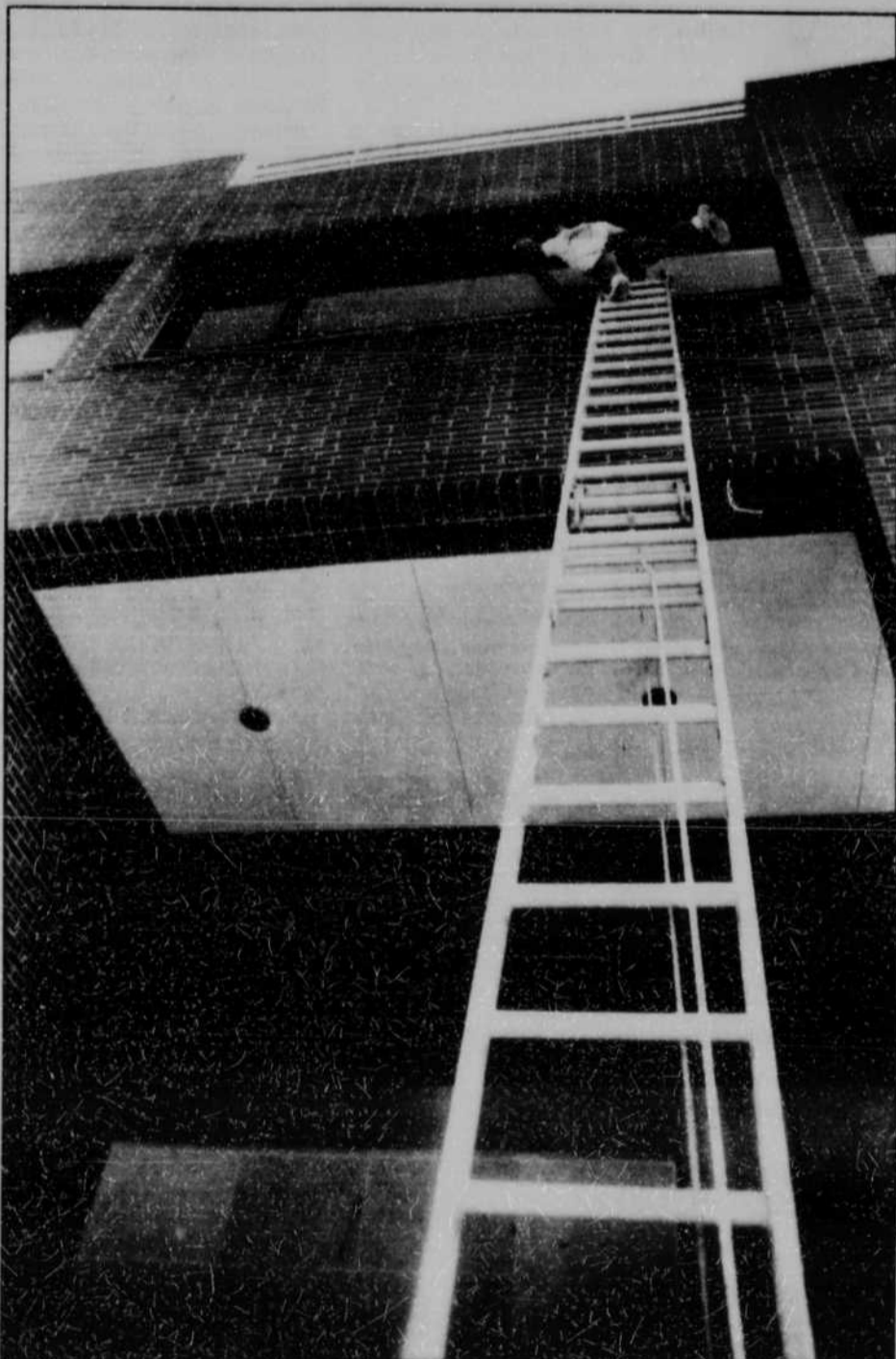
Many University of Nebraska-Lincoln faculty members feel "very strongly about this issue," McShane told the regents.

Members of the UNL Academic Senate passed a resolution last spring encouraging the foundation to divest, he said.

McShane said he wanted to deliver the resolution's message to the regents even though the foundation is a private organization not directly tied to NU.

"I do understand that this body is not in absolute control of the foundation," he said. "I

See REGENTS on 2



Michelle Paulman/Daily Nebraskan

Missed a spot!

Scott Trumbley, a 23-year-old employee of Roy's Window Service, stretches precariously to clean the top windows of the Wick Alumni Center.