

entertainment

UNL art faculty's work, creative insight on display

"Artworks and Inspiration," an art exhibition of work by the faculty of the UNL Department of Art & Art History, will open Friday at the department's gallery.

The exhibition includes faculty artists' recent work, as well as insight into their creative processes.

Tickets available for last symphony orchestra shows

The Lincoln Symphony Orchestra is offering a package of tickets for the Orchestra's final three performances of the season. The per-

Each artist's individual vision will be paired with his or her special object or source of inspiration. An opening reception is scheduled for Wednesday, from 5 to 7 p.m. The show will continue through Feb. 1.

A gallery forum is scheduled for Jan. 24 at noon. Artists will be

present to discuss and answer questions about their work.

The Gallery of the Department of Art & Art History is located in 102 Richards Hall, 10th and T streets. The gallery is open from 9 a.m. to 5 p.m. Monday through Thursday.

formances will be held at the Lied Center for Performing Arts.

The package includes the March 6, April 13 and May 1 concerts.

Tickets are available through volunteer sales people or by calling the Lincoln Symphony Orchestra Association.

CLASSIFIED INDEX

FOR SALE	64 Printing
2 Appliances	70 Religious
3 Bicycles	72 Rentals
4 Books	74 Social Services
5 Clothing	76 Travel
6 Computers	78 Tutoring
8 Furniture	80 Typing & Resumes
9 Garage Sales	
10 Misc. For Sale	NOTICES
12 Musical Instruments	100 Rides
14 Photo Equipment	110 Announcements
16 Sporting Goods	120 Greek Affairs
18 Stereo/TVs	130 Student Government
19 Ticket Exchange	135 Meeting Others
20 Vehicles	140 Personals
	145 Lost & Found
	148 Wanted
SERVICES	JOB
22 Adoption	150 Child Care Needed
25 Automotive	160 Help Wanted
28 Beauty Aids	162 Work Study Jobs
30 Bridal	164 Summer Jobs
32 Counseling	
34 Floral	HOUSING
36 Health & Fitness	170 Roommates
38 Insurance	175 Rooms For Rent
40 Instruction	180 Houses For Rent
42 Job Placement	190 Apartments For Rent
44 Legal	194 Homes For Sale
60 Misc. Services	198 Vacation Rentals
62 Pregnancy	

For Sale: 1/4 Karat Diamond Engagement Set. Valued \$700- will sell for \$400. 488-0743, after 5pm.

18 Stereo/TVs

13" Cable-ready color TV with remote control. Perfect for bedroom or kitchen. Perfect condition. Contact Loren at 474-0593.

22 Adoption

Adopt-Young loving professional California couple with home of their own unable to have children seeks to share their life and happiness with newborn baby. Expenses paid; fully legal. Please call Freddie or Scott collect at 818-981-6745.

ADOPTION

California couple, young, with much love and security to offer, desire to adopt baby to age two. All expenses paid, totally legal. PLEASE call Nancy collect, (213)397-4909. THANK YOU

PREGNANT AND WONDERING

WHAT TO DO? Explore the protection and benefits of adoption which are only provided by a licensed agency. No fee for our confidential services. Contact: Nebraska Children's Home Society 4600 Valley Road 463-7879.

60 Misc. Services

Creative Professional Wedding Photography. Affordable prices! Proofs & NEGATIVES can be yours to keep!!! Wholesale reprints, payment plans available! THE CAMERA MAN, Toll free 1-800-873-2610 or (308)382-7204.

TYPEWRITERS WORD PROCESSORS RENTAL SALES SERVICE RENT-TO-OWN BLOOM'S
323 North 13th Street
474-4136

62 Pregnancy

PREGNANT? BIRTHRIGHT is a confidential helping hand. Free pregnancy test, please call us for appointment, 483-2609.

80 Typing & Resumes

America's Oldest and Largest **PROFESSIONAL RESUME SERVICE**
• Consulting • Writing • Typing • Printing
Competitive Price • Students Discounts
RESUMES 10% off WITH THIS AD
Lifetime nationwide updating.
475-6738 3701 O St. #B-7

CAN'T TYPE - DON'T WANT TO - NO TIME!!! We can handle all your basic typing needs at:

COMPUTER TYPE & SERVICES
476-TYPE
1630 QUE STREET

Resumes
Professionally typeset or laser printed. \$10-\$15 plus tax.
Daily Nebraskan
basement of the Nebraska Union

★★ EXTRA CASH ★★ FOR A LIMITED TIME ONLY WITH THIS AD

NEW DONORS RECEIVE \$25.00!!
RETURN DONORS RECEIVE \$25.00!!
your first time back in over 2 months when you bring a new donor with you. Safer, faster plasma donation at ABI centers due to automated procedure. (Bonuses subject to change.) (Mon. - Sat.) Free parking at any Park & Shop.
University Plasma Center
Associated Bioscience, Inc.
1442 "O" St. Lincoln 475-8645
We accept all ads from competitors.

Bash Riprocks

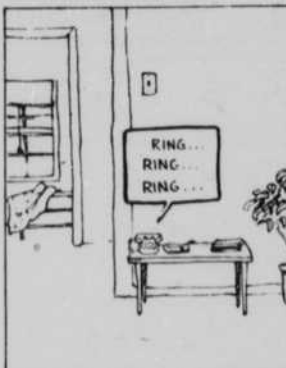
Welcome Back Students!

Bobby Curious

Monday, Jan. 15
Friday, Jan. 19
Saturday, Jan. 20

Drink Specials
Drink Specials
Drink Specials

Campus Notes

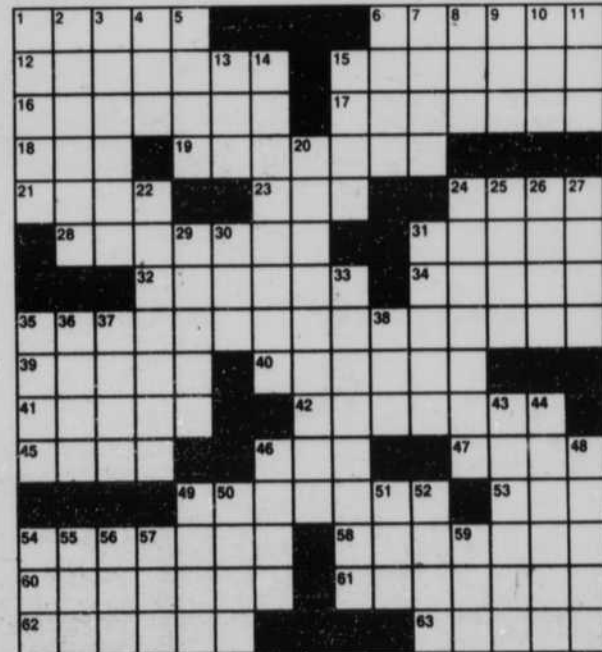


- ACROSS**
- 1 Young Atlantic codfish
 - 6 Companies of singers
 - 12 "Sailing on obscene wings athwart —": Coleridge
 - 15 Illumined by brightest day
 - 16 French playground
 - 17 Beforehand
 - 18 French friend
 - 19 Feasts
 - 21 Gusher
 - 23 Salamander
 - 24 Proceed on
 - 28 Condiment from evaporated ocean water
 - 31 One who pads checks
 - 32 Italian port city
 - 34 Finnish lake, to a Swede
 - 35 "There midnight's all a-glimmer, and —": Yeats
 - 39 Nobel chemist Kurt: 1950
 - 40 Pries
 - 41 " — the rod
 - 42 Alfresco
 - 45 Myra or Rudolf
 - 46 Knows, in poesy
 - 47 Color or duck
- DOWN**
- 1 Hat or vote preceder
 - 2 Some doorbells
 - 3 Address abusively
 - 4 U.S. maritime spy agcy.
 - 5 One who accomplishes
 - 6 Young, inexperienced person
 - 7 — de combat
 - 8 "A Chorus Line" song
 - 9 SW Nigerian city
 - 10 Disencumber
 - 11 Pigs' place
 - 13 Norwegian wherewithal
 - 14 Common monkshood
 - 49 In need of a diet?
 - 53 — -Magnon man
 - 54 Connect for service
 - 58 Midday stop for rest
 - 60 " — destruction that wasteth at —": Psalm 91
 - 61 Spanish nobleman
 - 62 Horse's gait
 - 63 Malicious stares

Edited by Eugene T. Maleska

ANSWER TO PREVIOUS PUZZLE

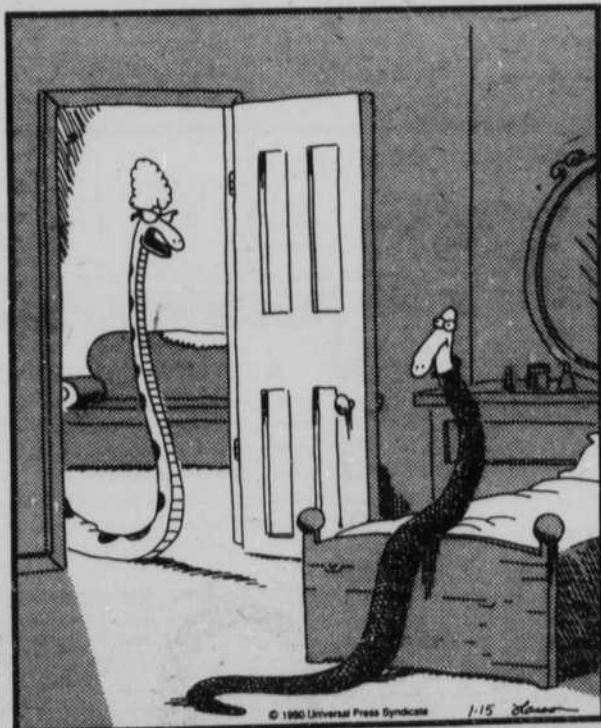
ALES BELOW HEAP
RIDE ELOPE ATTU
CZECHMATES RUIN
HALCYON RECEIPT
ODA CAROL
AWE ENDO MICAH
LIAR ERNA ENATE
ORGANDY ROSEBUD
FERIA SITU SING
TRESS LETS NEE
EASEL RAG
CIRCLED EARNEST
ASIA REIGNDANCE
ETON UMIAG SCAT
NOTE MAINS HEBE



- 15 U.S. illustrator
- 20 "The — of a Faun": Debussy
- 22 N. African falcons
- 24 Improvises
- 25 Catchall abbr.
- 26 Agrippina's son
- 27 Sketched
- 29 Baltic island
- 30 Trainee: Abbr.
- 31 Donjons
- 33 Demagogue's activity
- 35 Poet Ogden
- 36 Old Greek flask
- 37 Harem chambers
- 38 Sodom evacuee
- 43 Resolve
- 44 Breadwinner
- 46 Sly
- 48 Theater parts
- 49 "Jalousie" composer
- 50 Like a godwit
- 51 Correlative
- 52 Aim
- 54 Bus. word
- 55 Profane, in Hawaii
- 56 Manasseh, to Joseph
- 57 Explosive
- 59 Athens-to-Bucharest dir.

THE FAR SIDE

By GARY LARSON



"Oh my God, Bernie! You're wearing my nylon?"