

Stuck elevator causes mishap

From Staff Reports

A student who fell from an elevator in Cather Hall Sunday told UNL police he was trying to crawl out of the elevator after it had become stuck between two floors.

According to Cpl. Linda McEntarffer, the elevator got stuck between second and third floors early

Sunday morning. Varner Hike, known as "J.R.," told University of Nebraska-Lincoln police that he opened the elevator doors and tried to crawl out, then fell down the elevator shaft.

Anthony Scarpello, a freshman Cather 2 resident, said he heard Hike screaming, notified the Cather 2 student assitant, and then pulled Hike from the shaft.

SUIT from Page 1

ing an illegal search on his home, the suit says.

Later that month, the criminal charge of theft by receiving stolen property pending against Mahlberg was dismissed, the suit states.

Mahlberg alleges in the suit that the university also is liable because it has tolerated and permitted a pattern of illegal activities and failed to prop-

erly train and discipline the officers involved.

By failing to maintain a proper system for reviewing police officers, the suit alleges, UNL police officers were encouraged to believe that they could violate the rights of people such as Mahlberg.

As of early Monday, Mentzer had not filed a response to Mahlberg's suit.

CHINA from Page 1

Also, having U.S. citizens with backgrounds from mainland China will help lobbying efforts with U.S. Congress members, Ding said.

"One of the advantages Poland has is a large Polish population in the United States, so Poland gets a large amount of support from the (U.S.) government," he said.

A large Chinese population in the United States would help promote Chinese concerns, he said.

"But if the bill isn't passed, none of these things will happen," Ding said.

A separate bill that would grant a three-year visa extension for Chinese

students is not as helpful a solution as the waiving of the two-year waiting period for citizenship, Ding said, because that bill still forces students to return to China even if conditions there haven't improved in three years. The bill to grant a three-year extension has been approved by the house, but is awaiting approval in the Senate.

The ideal solution would be to give Chinese students limitless visa extensions to allow them to return to China whenever they wanted without having to become U.S. citizens, Ding said. But, he said, that solution is unlikely, so students will settle for easier means to citizenship.

WAGES from Page 1

will be part of the budget we're going to prepare right now."

Swanson said the hike would be reflected in food-service prices and in the request for student fees. The student fees pay student wages in "non-profit producing" offices such as the Campus Activities and Programs office.

Although those employees may not be working at minimum wage, an increase in minimum wages is reflected in other salaries, Swanson said.

The proposed hike is long overdue, he said.

"I think that our employees deserve it and will probably welcome it," Swanson said.

Kirk Beyer, compensation manager of the personnel office, said he did not think a higher minimum wage would have much of an effect on the university.

"Our office starts at that (minimum wage) right now," he said.

John Beacon, director of scholarships and financial aid, said "it's time for such an increase."

Although many university offices now offer higher wages to compete with off-campus employers, some

departments that use work-study employees continue to pay minimum wage, Beacon said.

"They've been able to get away with this in the past," he said.

Because offices that use work-study students only pay 20 percent of the wages, Beacon said a higher minimum wage shouldn't have a big impact on UNL offices.

"They'll only have to pay 20 percent of the increase," he said.

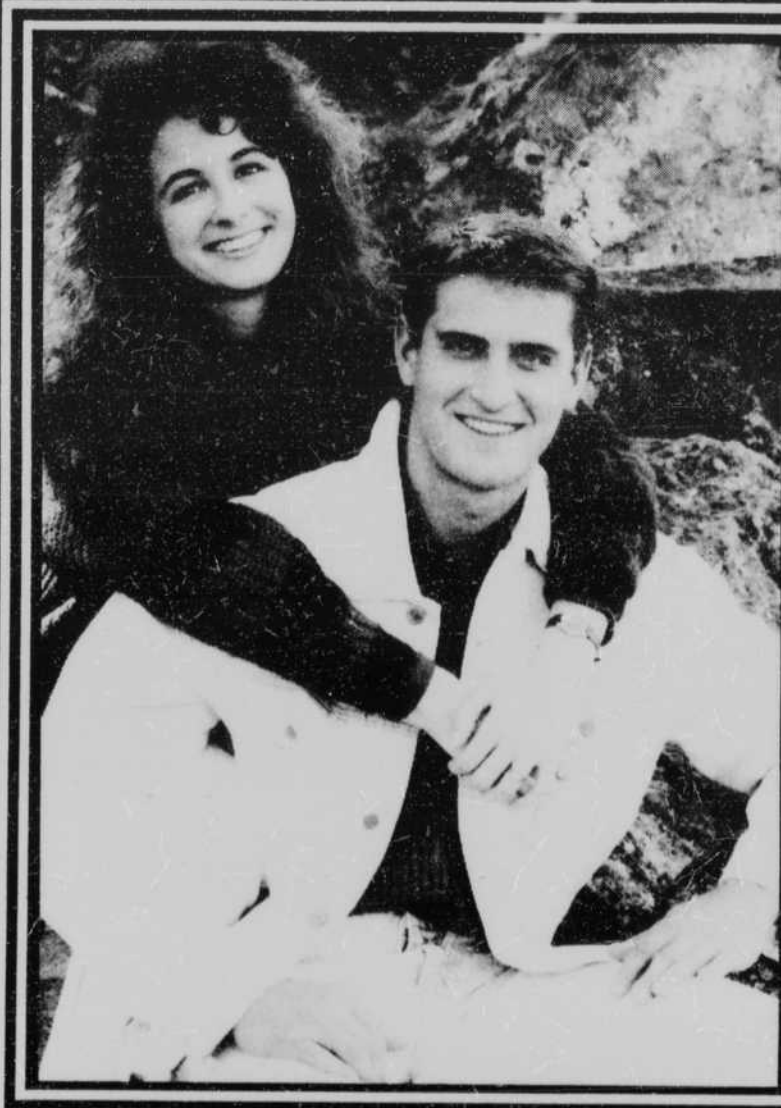
PARKING from Page 1

Blaha, who proposed the motion, said he worries about faculty and staff members not having places to park.

Doug Oxley, Parking Advisory Committee chairman, said he disagreed with Blaha's motion because the students won't see the new faculty lot as making up for their lost parking.

Oxley said faculty and staff members could park in the lots near the Bob Devaney Sports Center and take the shuttle.

"We have parking. We don't need to create new parking (lots)," Oxley said.



\$7.00 OFF
Select Guys PEPE and Lawman jeans

\$7.00 OFF
Select Gals Lawman, Guess and PEPE jeans

Other in-store brands include: Girbaud, Union Bay, Levi, Bugle Boy

BRASS BUCKLE
WE SPEAK YOUR LANGUAGE.™

Holiday denims for the holiday style. There is always something for everyone at the Buckle. We'll even alter your selections free.

East Park Plaza
466-3164

M-Sat: 10-9
Hours: Sun: 12-5

Feast your eyes on the future at Pizza Hut.



As Seen In



Pizza Hut Solar Shades

\$1.99
each with pizza purchase
\$10.00 retail value

The future's as close as the nose on your face with Solar Shades™ glasses from Pizza Hut.™ Collect all four designs, one each week. Get a free neon neckcord with every pair.



Makin' it great!

This is the Season! This is the Sale! Correction

The 1/3 ct Diamond Earrings listed in the advertisement which ran on Friday, November 17 was incorrect.

The correct listing reads as follows:
1/5 ct Diamond Earrings, Reg. \$285, Sale \$195

We apologize for any inconvenience.



Gateway, and Downtown at 12th & O

<p>Two Medium Cheese Pizzas \$10.99!</p> <p>Available on Pan, Hand-Tossed and Thin 'n Crispy® pizza crusts. Toppings extra.</p> <p>Available on Dine-In, Carryout and Delivery where available. Limited Delivery Area. Coupon not required on regular menu prices. NOT valid at all Pizza Hut® restaurants. NOT valid in combination with any other Pizza Hut® offer. Our drivers carry no more than \$20. Thin 'n Crispy is a registered trademark of Pizza Hut, Inc. Offer expires December 21, 1989. CODE: 20</p> <p><small>© 1989 Pizza Hut, Inc. 1/20 cent cash redemption value.</small></p> 	<p>Single-Topping Personal Pan Pizza with Breadsticks, and a 32 oz. Pepsi-Cola® \$2.99!</p> <p>Dine-in or Carryout only. Please mention coupon when ordering. One coupon per person per visit. NOT valid at all Pizza Hut® restaurants. NOT valid in combination with any other Pizza Hut® offer. Personal Pan Pizza® is available Monday through Saturday, 11:00 am to 4:00 pm. Personal Pan Pizza is a registered trademark of Pizza Hut, Inc. Pepsi-Cola is a registered trademark of PepsiCo, Inc. Offer expires December 21, 1989. CODE: 53</p> <p><small>© 1989 Pizza Hut, Inc. 1/20 cent cash redemption value.</small></p> 	<p>Medium Meat Lover's® Pizza \$8.99!</p> <p>Available on Pan, Hand-Tossed and Thin 'n Crispy® pizza crusts.</p> <p>Available on Dine-In, Carryout and Delivery where available. Limited Delivery Area. Please mention coupon when ordering. One coupon per party per visit. NOT valid at all Pizza Hut® restaurants. NOT valid in combination with any other Pizza Hut® offer. Our drivers carry no more than \$20. * designates registered trademarks of Pizza Hut, Inc. Offer expires December 21, 1989. CODE: 10</p> <p><small>© 1989 Pizza Hut, Inc. 1/20 cent cash redemption value.</small></p> 
---	---	---