

# Daily Nebraskan

March 15, 1989

University of Nebraska-Lincoln

Vol. 88 No. 121

Vote Today!

## WEATHER:

Wednesday, partly cloudy with highs near 40, winds from the W at 5-15 mph. Wednesday night, mostly cloudy, low 20-25. Thursday, mostly sunny, high around 50.

## INDEX

News Digest ..... 2  
Editorial ..... 4  
Arts & Entertainment ..... 7  
Sports ..... 12  
Classifieds ..... 14

## NU officials support faculty salary increase

By Natalie Weinstein  
Staff Reporter

University of Nebraska officials were united in their endorsement of salary increases as the No. 1 priority in NU's budget when they testified in front of state senators Tuesday.

"Improving faculty salaries remains our highest budget priority," NU President Ronald Roskens told members of the Nebraska Legislature's Appropriations Committee.

The Legislature's support for the first year of the three-year salary improvement plan has led to a "new optimism and confidence" among faculty members, Roskens said.

"We are not finished, however, and we must not abandon our efforts now," he said.

Roskens was among 40 people who told committee members what they consider the top priorities in the NU Board of Regents 1989-91 budget proposal.

Besides salary increases, officials included

library improvements, the research initiative and construction projects among their highest priorities.

Testifiers also emphasized the need for academic program improvements, UNL's Office of Scholarships and Financial Aid improvements, new faculty positions for the College of Business Administration at the University of Nebraska-Lincoln and the University of Nebraska at Omaha, equipment improvements and a telecommunications system.

The regents have requested \$496.3 million over the next two years, while Gov. Kay Orr has proposed \$460.9 million for NU over the next two years.

Included in NU's budget request is an overall 11.2 percent increase in faculty salaries and an overall 12.5 percent increase in non-faculty salaries for each of the next two years.

Orr has requested a 7.5 percent increase for both faculty and staff for each of the next two years.

Nancy Hoch, chairman of the NU Board of Regents, told senators that last year faculty salaries were about 18 percent below the average of comparable institutions and staff salaries were about 20 percent below the average. Faculty salaries are now about 11 percent behind and staff about 16 percent behind the average, she said.

Hoch said it is "imperative that we stay on track."

"I cannot overemphasize the importance of the salary increases that went into effect this year. We must continue with the second year increase," Hoch said.

UNL Chancellor Martin Massengale, UNL Faculty Senate President Robert Diffendal, UNO Chancellor Del Weber and UNO Student Regent Paula Effle also testified that salary increases are their highest priority for NU.

Lorraine Moon, the salary issues chairman for the University of Nebraska Office Personnel Association, told senators that of the 2200 staff members at UNL, 520 full-time employ-

ees earn less than \$10,900 per year.

Moon asked senators to "keep faith with us" by financing the second and third years of the salary improvement plan.

Officials said library improvements and the governor's research initiative are next on their list of priorities.

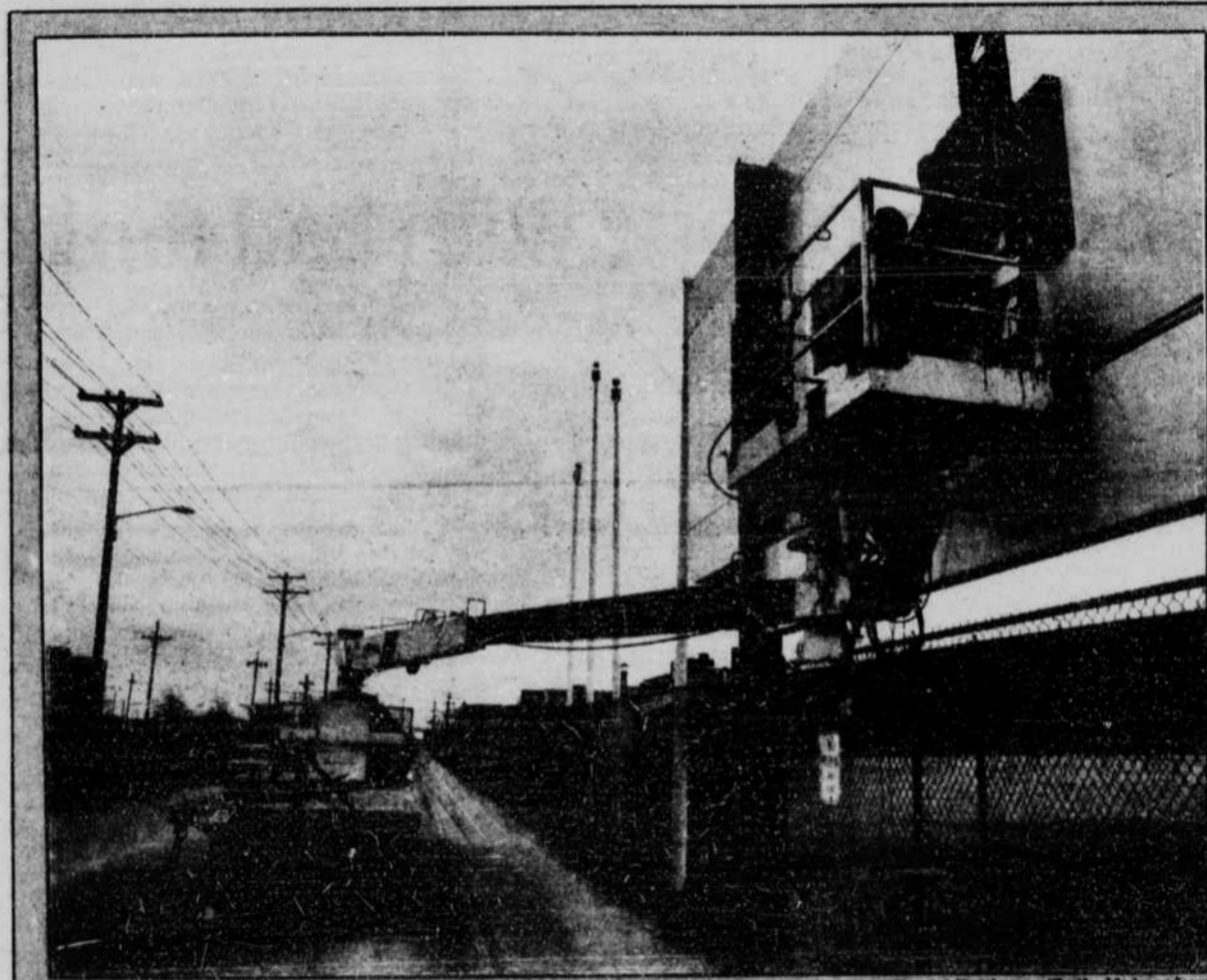
Hoch said increased funding for collections, acquisitions and automation of NU libraries is as high a priority as the salary increases.

Massengale said that a strong library is essential for a major research university.

"You can have a great library without a great university," he said, "but you can't have a great university without a great library."

The increasing cost of scholarly journal subscriptions and the unfavorable exchange rates for the dollar have caused NU collections to wither, Massengale said. More than 900 journal subscriptions have been cancelled within the last three years, he said.

See LEGISLATURE on 6



David Fahleson/Daily Nebraskan

### Through rain and snow . . .

As temperatures dropped to 30 degrees and winds gusted to 40 mph Tuesday afternoon, John Harper and Larry Hector wired the new scoreboard message board at Buck Beltzer Field.

## RHA elections proceed despite alleged violations

By Brandon Loomis  
Senior Reporter

The Residence Hall Association's Electoral Commission Tuesday discussed alleged ethical and legal violations by a vice presidential candidate, but decided to let today's election proceed.

RHA President Larry Koubsky, the ADVANCE party presidential candidate, submitted a letter to the commission complaining that Tim Thorson campaigned for IMAGE party vice president while sitting on the Electoral Commission and voting to approve the eligibility of his running mate, J. Matt Wickless.

The committee had approved Thorson's candidacy in a meeting last Thursday, but addressed the question again Tuesday.

According to RHA bylaws, members of the commission who are running for office must resign from the commission and appoint a substitute.

During a March 2 executive session, Thorson voted with the commission to allow Wickless to run for RHA president if he could prove he

had met the required 2.0 grade point average by the March 8 filing deadline.

Shari Klippenstein, RHA adviser, said Wickless took a mini-course at the beginning of this semester and had a note from the professor proving his average was above 2.0 by the filing date.

A senate resolution that was written this semester, but was never introduced before the RHA Senate, called for the impeachment of Wickless as speaker of the RHA Senate. The resolution says, "Speaker Wickless has violated the trust of the association and his constituents in Selleck Hall by accepting an office for which he is ineligible to hold . . ."

Klippenstein said she had heard of the resolution, but it was never filed with her.

Wickless resigned as speaker Feb. 23.

Thorson said that at the March 2 vote, he knew he was going to run for vice president, but was not sure that he would be Wickless' running mate.

See RHA on 6

## ASUN candidates hold last debate

By Larry Peirce  
Senior Reporter

Charges of inexperience and mudslinging dominated the final ASUN debate Tuesday night.

IMPACT presidential candidate Bryan Hill began the debate by asking why PRIDE candidates did not attend Monday's ASUN debate, as well as NU Board of Regents and ASUN meetings.

Dan Rock, PRIDE's presidential candidate, said PRIDE candidates held their own debate later with SLUMBR because of scheduling conflicts.

Hill said IMPACT has the experience to lead the Association of Students of the University of Nebraska. He said that PRIDE candidates haven't attended ASUN or NU Board of Regents meetings regularly.

"Where were you, PRIDE?" Hill said.

Hill also asked Rock why he wasn't at Tuesday's Appropriations Committee hearing at the State Capitol, when the University of Ne-

braska's budget was discussed.

PRIDE's second vice presidential candidate Brad Brunz said his party wouldn't "condescend to mudslinging."

"We're new. We're inexperienced," he said, "We don't feel we are going to become apathetic."

Brunz said PRIDE would work for an official vote for student regents, more involvement of minority students and a more approachable ASUN.

Hill said he supports an official vote by ASUN's student regent, but that it wasn't a good idea to push for it immediately.

"We barely have the unofficial vote now," he said.

BEER presidential candidate Bob Gestring said BEER was formed hastily in order to bring up important issues and try to get students to vote.

SLUMBR party senatorial candidate Joe Bowman said IMPACT represents the "chain of power" and a "good old boy system," which made Hill chairman of the Government Liaison Committee and will "appoint" him president.

Bowman said government leadership doesn't require experience. He said that being "well versed" in the issues "doesn't mean you'll make it work."

When asked how the parties would encourage involvement from residence halls, the greek system and off-campus students, Brunz said PRIDE would mail ASUN information to off-campus students, and post signs in places where off-campus students go.

IMPACT's second vice presidential candidate Jon Bruning said one mailing to off-campus students would cost \$4,800.

Bruning said IMPACT would use existing lines of communication, such as Residence Hall Association, the greek system and the telephone to conduct a scientific, random survey of students.

Gestring said ASUN announcements should be placed in restroom stalls. Gestring said students have nothing else to read while they're there.

See DEBATE on 3

University of Nebraska-Lincoln official Tuesday announced sanctions against Phi Gamma Delta fraternity for violating alcohol and visitation policies following a Feb. 11 party.

Vice Chancellor for Student Affairs James Griesen said the sanctions include a one-year probationary period. The sanctions come after the house's "Around the World" party where a house member allegedly sexually assaulted an Omaha teenager.

Lancaster County Court charged Steven L. Ernst, a 20-year-old Columbus man, with subjecting a 17-year-old female to sexual penetration while she was incapable of resisting. Ernst, who was a member of the fraternity, has since withdrawn from UNL and is awaiting his preliminary hearing in Lancaster County Court.

Although the fraternity was not sanctioned because of the alleged assault, Griesen said that the "alcohol and visitation violations created an environment in which the assault occurred."

Because of those violations, Griesen said, Phi Gamma Delta has been put on conduct probation until the spring semester of 1990.

Also included in the sanctions is

the required written approval of parents of first-year freshmen who want to live in the house next year. The consent form must be approved by the Director of Greek Affairs Jayne Wade Anderson and include a full disclosure of the house's probationary status.

The parents of all current members of the fraternity also will be notified about the probation.

Other sanctions against the house include:

- The appointment of graduate trustees of the international fraternity to take charge of all activities of the UNL chapter.

- Approval of all areas of the chapter by both the graduate trustees and Anderson.

- Only one chaperoned social event for each semester next year.

- At least two "well-planned" philanthropies approved by the trustees and Anderson.

Griesen said he thinks the sanctions are "in some respects harsh, but manageable." The sanctions are necessary, he says, to get the fraternity "back on the right track."

Isolated instances involving fraternities, such as the Phi Gamma Delta party, "reflect negatively on the entire greek system," Griesen said, "when in fact the university has enjoyed a very positive relationship with greek houses on this campus for over a century."