

FINANCIAL AID STILL AVAILABLE

• • DEADLINE EXTENDED • •

You can still apply to receive
financial aid
for the 1988-89 academic year.

Funds Available:

- Pell Grants
- Other Grants
- Work-Study
- Loans

Who is Eligible to Apply?

- Currently enrolled students
- New second semester students

For More Information:

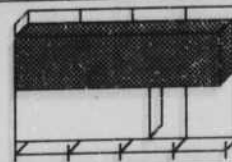
Office of Scholarships and
Financial Aid
20 Administration Building

ELECTION '88

PRESIDENT

Bush 389,394
Quayle (R)

Dukakis 254,426
Bentsen (D)

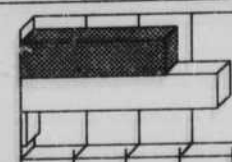


U.S. SENATE

Karnes (R) 272,449

Kerrey (D) 371,382

Chambers (NA) 10,023



U.S. HOUSE

1st District
Bereuter (R) 144,359

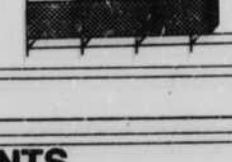
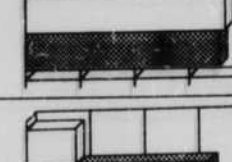
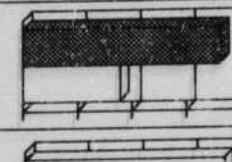
Jones (D) 71,445

2nd District
Hoagland (D) 109,453

Schenken (R) 106,022

3rd District
Racek (D) 44,339

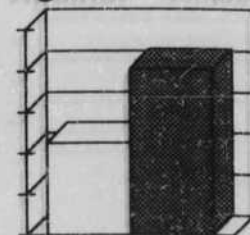
Smith (R) 166,579



INITIATIVE 402 Waste compact

For 224,570

Against 403,026

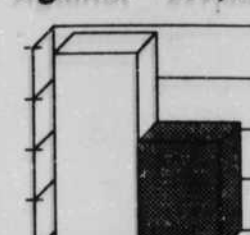


For Against

INITIATIVE 403 Bear arms

For 385,921

Against 211,820



For Against

AMENDMENTS

	For	Against
Amendment 1 Finance provisions	311,479	204,171
Amendment 2 Horse races	358,079	215,132
Amendment 3 A. Voter sign initiatives B. Voting age	372,079 291,055	174,373 282,863

Results after 100% of all precincts had been tabulated

John Bruce/Daily Nebraskan

There'll never be
another time like this...



Class Watches™, alive with spirit!
Built to take it, no matter what
the action.

- Swiss quality movement
- Water and shock resistant
- Official school colors
- Available in large and small sizes.

Class Watches™, to keep
you on time through
college and beyond.