

Daily Nebraskan

September 9, 1988

University of Nebraska-Lincoln

Vol. 88 No. 9

Friday

WEATHER: Friday, hazy sunshine, high in the low to mid 80s, winds from the SE at 10-15 mph. Friday night, mostly cloudy, low around 60. Saturday, mostly sunny, warm, high in the upper 80s to low 90s.

INDEX

News Digest 2
Editorial 4
Sports 9
Arts & Entertainment 12
Classifieds 15

Five UNL fraternities placed on probation

By Victoria Ayotte
and
Ryan Steeves
Senior Reporters

At least five fraternities were placed on probation in the past week and at least four others received warning letters for violating the University of Nebraska-Lincoln's drinking policies, according to fraternity presidents who were issued the letter from UNL's director of Greek Affairs.

According to the letter, Jayne Wade Anderson placed the fraternities on probation for drinking on campus. Most of the offenses occurred before the school year began.

Anderson did not release the names of the fraternities, but fraternity presidents confirmed to the Daily Nebraskan that they were put on probation or issued warnings.

All fraternities and sororities have an agreement with the NU Board of Regents requiring them to follow all UNL rules, including the drinking policy. UNL rules prohibit alcohol on campus.

The fraternities on probation are Sigma Phi Epsilon, Phi Kappa Psi, Kappa Sigma, Sigma Nu and Phi Gamma Delta.

Fraternities that received warnings included Lambda Chi Alpha, Theta Xi, Phi Delta Theta and Sigma Chi. Sigma Alpha Epsilon was listed as on probation, but Jerry Hoffman, SAE president, said the fraternity only received a warning. Two other houses were allegedly reprimanded but could not be reached for verification.

'Many of our fraternities have lost sight of their purpose on campus.'

— Anderson

In previous years, Anderson said, she only checked a fraternity for alcohol when there was a complaint. This year, she visited the fraternities unannounced at late night hours, according to several fraternity presidents.

Anderson said she initiated this policy mainly because the risk of accidents increases when students consume alcohol.

"Two factors are of the utmost importance — preserving lives and maintaining our chapter

strength and numbers," Anderson wrote in the letter, which was sent to fraternity and sorority officials, and administrators.

Enforcement also was necessary, she said, to keep congenial relations between UNL officials and fraternity and sorority members.

"... many of our fraternities have lost sight of their purpose on this campus..." Anderson wrote. "Frankly, I could not be more disappointed in our fraternal attitude."

Anderson said she senses that fraternities are being more casual about drinking this year, which could strain relations.

Punishments for fraternities varied depending on the severity of the infraction. All fraternities put on probation have to attend at least one student health alcohol abuse program. According to a memo, Sigma Nu, Phi Gamma Delta and one other fraternity must attend a series of such programs. Sigma Nu and Phi Gamma Delta are allowed two official social functions first semester.

Andy McDowell, president of Phi Gamma Delta, said his house was placed on probation the weekend before school started for "a variety of things."

Loud music brought Anderson to the house, where alcohol and drinking were discovered,

McDowell said.

Jerry Woodward, president of Sigma Nu, said house members were placed on probation last week, but were not having any illegal parties.

Woodward would not say why his house was placed on probation. "That's really our business," he said.

Sigma Phi Epsilon was placed on a less severe probation.

Sig Ep President Todd Bush said the fraternity was put on probation because they had alcohol on the premises and because the fraternity was disorderly before school started.

Bush said fraternity members must attend two educational programs and display more orderly behavior prior to next school year.

Sigma Alpha Epsilon was also listed as on probation. Hoffman said the house is not on probation but did receive a warning.

The warning was not for a party, he said, but for an infraction that he refused to name.

"It was a slap on the hand saying not to do it again," he said.

SAE members have not held illegal parties, Hoffman said, and the only punishment they received was to have a Student Health Alcohol

See PROBATION on 3

\$25 graduate fee helps recruitment

By Jim Beckman
Staff Reporter

Since July 1, the University of Nebraska-Lincoln has collected a \$25 fee on all graduate applications for admission for the second semester of 1988-89.

The Executive Graduate Council approved the fee last fall after considering it for nearly five years.

John Yost, vice chancellor for research and dean of graduate studies, said the fee assessment "brings the university into line with its peer institutions." Most of those institutions have collected a fee for more than a decade, he said.

Money gathered from the fee will be used to improve recruitment of graduate students, hire a foreign credentials analyst, offer training for graduate teaching assistants and support graduate student fellowships.

Yost said because more undergraduates are moving directly on to their careers, the improved recruitment of quality graduate students has become necessary.

Last year, on a test basis, a member from the graduate studies office worked with the department of veterinary science to make recruitment brochures, he said. The graduate application fee will make more of this kind of activity possible, Yost said.

The foreign credentials analyst, who reviews foreign students' transcripts, will help UNL's "over-worked" graduate studies staff process foreign applications, Yost said.

Offering training for graduate teaching assistants is crucial, Yost said.

"Teaching is how most graduate students spend their time at the university," he said.

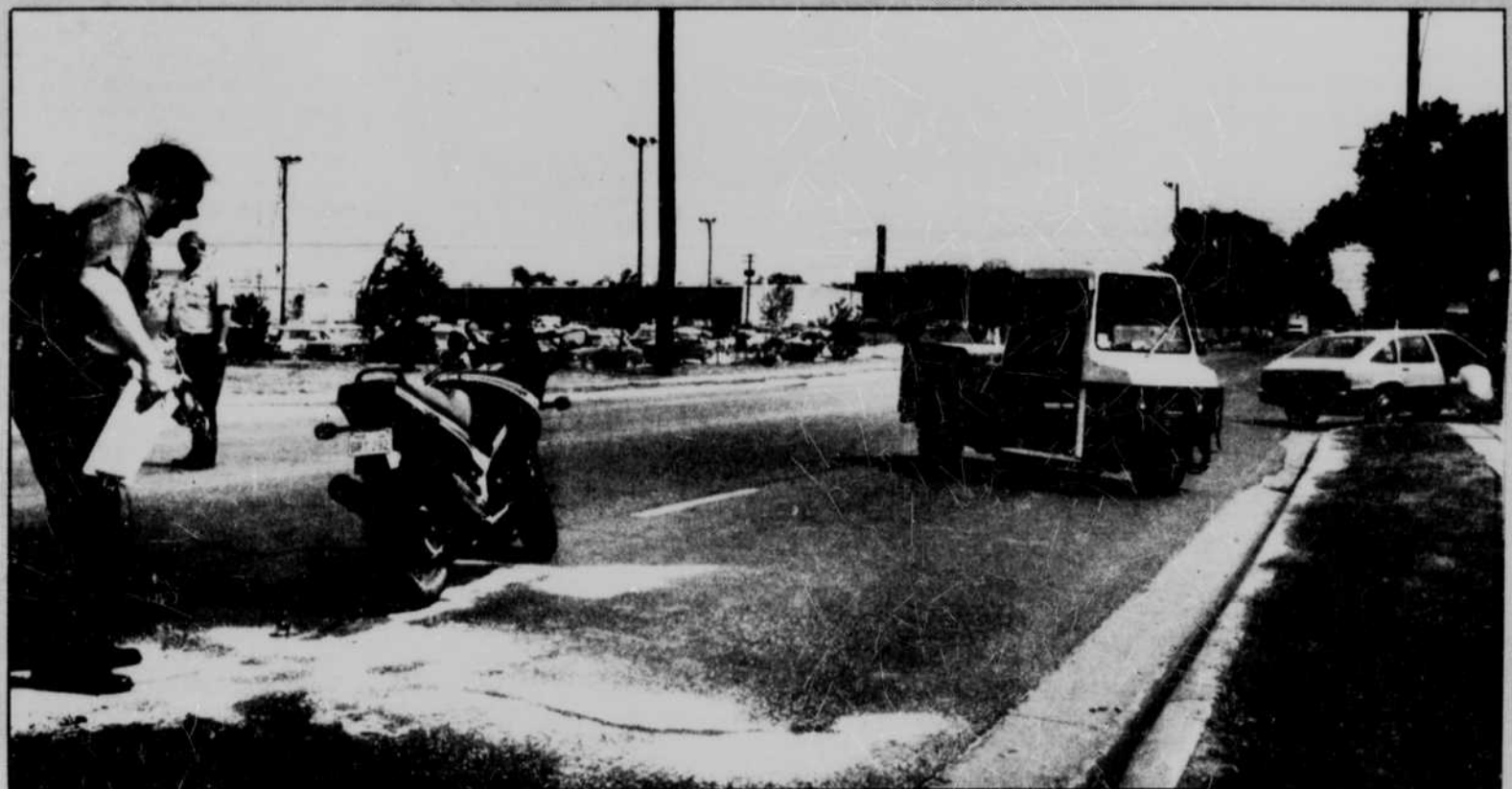
Adding to the pool of graduate fellowships will be an important use of the fee, Yost said. UNL currently ranks below its peer institutions, such as Iowa State University, University of Missouri and Colorado State University, in the number of fellowships and the dollar amount of stipends available to graduate students.

Yost said he doesn't think the fee will reduce the number of graduate students at UNL because UNL's peer institutions added similar fees a long time ago.

Also, Yost said he thinks the \$25 fee is more attractive to foreign students, who are often charged up to \$50 at other institutions.

Yost said he thinks the graduate

See GRADUATE on 7



Officers D.W. Haumont and S.B. Wetzel of the Lincoln Police Department take measurements at the scene of a motorcycle-car accident Thursday afternoon on Vine Street near Sandoz Hall.

No serious injuries

Motorcycle and car collide Thursday

By Jerry Guenther
Staff Reporter

Two University of Nebraska-Lincoln students escaped serious injury Thursday when the motorcycle on which they were riding collided with a car on Vine Street between 17th and 19th streets.

Sgt. John Kerns of UNL Police

Department said the accident occurred at about 12:45 p.m. Thursday when a motorcycle driven by Craig Davis, 19, of 1425 R St., collided with a vehicle driven by Leslie Dierking, 19, of 860 N. 17th St.

Kerns said Davis and a passenger on his motorcycle, Peter Sartori, 19, of 1425 R St., were westbound

on Vine Street when Dierking pulled out of a driveway at 860 N. 17th and the two collided.

Davis and Sartori, suffering from multiple abrasions, were then taken to Lincoln General Hospital, Kerns said.

Carmen Draper, hospital spokeswoman, said Davis and Sartori were treated and released.

Kerns said Dierking's injuries did not require hospitalization.

Kerns said damage to Davis' 1987 Kawasaki was estimated at \$2,500, while Dierking's 1982 Chevy Citation received \$600 in damage from the accident.

Neither Davis nor Sartori were wearing a helmet when the accident occurred, Kerns said.

Griesen initiates review of Center

By Eve Nations
Staff Reporter

After numerous complaints about the performance of the Women's Resource Center, a team of University of Nebraska-Lincoln representatives and two visiting consultants will meet next week to review its services.

The review staff will study the past performance of the center and determine what actions are required to

improve its programs and services.

James Griesen, vice chancellor for student affairs, initiated the review after receiving numerous complaints from alumni, staff and students about operations of the center. The review will be Sunday through Tuesday.

Griesen said some of the complaints came after the center ended its peer counseling program last year. Others questioned the role and mission of the center and the type of programs it should offer, he said.

Two consultants who have assisted other women's resource centers in the past will help determine improvements in the office.

Anne Hill-Beuf, from Cedar Crest College in Pennsylvania, will lead the review team with Peg Lonquist, former director of Women's Resource Center at Iowa State University in Ames. Hill-Beuf has served on the executive board of the National Association for Women's Centers.

The review team also includes two

UNL undergraduates, two graduate students and two faculty members.

Peg Johnson, director of special projects in Griesen's office, said the review team was chosen by herself and Griesen three to four weeks ago.

"The Women's Resource Center made recommendations on possible people to be on the review staff," Johnson said. "We are excited about it. Reviews have been done before but

See WOMEN on 3