

WEATHER: Tuesday, mostly cloudy with a 30 percent chance of light rain, possibly changing to wet snow. High 40 to 45. Southeast wind 10 to 20 mph. Tuesday night, a 50 percent chance of light snow. Low around 30. Wednesday, mostly cloudy with a 30 percent chance of light snow. High in the mid- to upper-30s.

Daily Nebraskan

Inside:

News Digest Page 2
Editorial Page 4
Sports Page 5
Entertainment Page 6
Classified Page 7

February 24, 1987

University of Nebraska-Lincoln

Vol. 86 No. 109

Rec-center finances Gillette ads milk for money

By Joeth Zucco
Staff Reporter

The Gillette Dairy Company is joining the campaign to solicit donations for the new indoor practice field and recreation center.

The company is running ads on the side panel of its milk carton that show Athletic Director Bob Devaney and football coach Tom Osborne saying, "The Nebraska football team needs your help."

"We're not getting anything out of it," said Jerry Hubert of Gillette Dairy. "We like to work with things that have to do with the state."

Hubert said all the donations will go toward construction of the practice

field and recreation center, even though the ad only mentions the practice field.

The ads will run on milk cartons until April 1 and from June 1 to Aug. 1. Hubert said radio and television ads also will be run to generate donations.

Lee Liggett, NU Foundation, said Gillette officials came to them with the idea of running the ads to help generate private donations. Liggett said the foundation is committed to raising \$3 million to \$3.5 million for the project and have \$1.5 million to date. Fundraising gatherings, personal contact, mailings and a \$5 surcharge on non-student football tickets will be used to raise money for the project.

"The drive has gone well. We're pleased with how it's gone to date,"

Liggett said.

Sentiment has been in favor of the project, according to Liggett, sports information director Don Bryant and Campus Recreation director, Stan Campbell.

"I think the project is long overdue on our campus," Campbell said. "The availability of recreation space for students is the lowest in the Big Eight. Seventy-six percent of the students participate in recreation. I think the percentage will go up when it's completed."

Another commercially supplied incentive to donate is a bumper sticker from Valentino's for donations of \$25 or more. Hubert said the stickers will say, "We're under cover."

\$995,000 room in doubt stadium addition proposed

By Jen Deselms
Senior Reporter

Despite continued discussion about a proposed \$995,000 meeting room for the UNL football team, the room may be far from becoming reality.

Although the room is included in the \$16.6 million recreation center and practice facility budget, it may not be located in the new center. It may never be built at all, some officials say.

Vice Chancellor of Business and Finance John Goebel said in a Monday press conference that the new center is not the ideal place for the meeting room. Goebel said the meeting room

would be better if it was closer to the stadium. A proposal to build an additional floor onto the South Stadium is being considered.

Currently, offensive players meet in an auditorium in the South Stadium and defensive players watch game films in a locker room.

Sports Information Director Don Bryant said the estimated cost of nearly \$1 million is not set because the final cost depends on where — and if — the room is built.

Goebel said planners are still looking for the least expensive, quality way to build the meeting room.

According to the Sunday Journal-Star, Nebraska football coach Tom Osborne was dissatisfied with the estimated cost of building an additional floor to South Stadium.

"I had a meeting with the people in charge of the design statement and said, 'That's no good. We can't afford that kind of money,'" Osborne said. "I told them that if the meeting room couldn't be done in the \$100,000 to \$150,000 range, to forget it. We want a meeting room, but we don't want an exorbitant thing."

Osborne and Athletic Director Bob Devaney could not be reached for comment Monday.



Doug Carroll/Daily Nebraskan

The Gillette Dairy Company's ad on milk cartons to raise money for the indoor practice field and recreation center.

Panels discuss business during B-Week celebration

By Tami Schuetze
Staff Reporter

Dean Gary Schwendiman of the College of Business Administration welcomed more than 100 high-school students attending the annual Business Week, or "B-Week" Monday at UNL.

Schwendiman said today's society is changing and youth need to move with it. More than 12,000 students have graduated from the college, most wanting and hoping to keep up with change.

He asked the students to think about what they wanted for themselves, and if the university could help them.

He noted a few famous and successful Nebraskans who attended the university and told how they reached their positions.

"Successful people just keep moving... when the answer is no," he said. "Persons are responsible for the happiness and success of themselves."

Overcoming difficulties will make a person stronger, he said.

The rest of B-Week will include activities for all college students, not just business majors.

Tuesday at 12:30 p.m. in CBA 119, Todd Kelly, a 1984 UNL graduate currently working for IBM, will discuss "Communication and Motivation."

Wednesday, about a dozen companies will talk to students about their prospective careers in the Nebraska Union lobby. That evening from 7:30 to 9:30 p.m. in the Centennial Room, a panel discussion will be held on Nebraska's economy and the university's role. The panel includes Don Macke, consulting economist with the special committee on economic development of the Nebraska Legislature; Dr. Sang Lee, chairman of management and executive director of the Nebraska productivity and entrepreneurship center; and Lt. Gov. William Nichol.

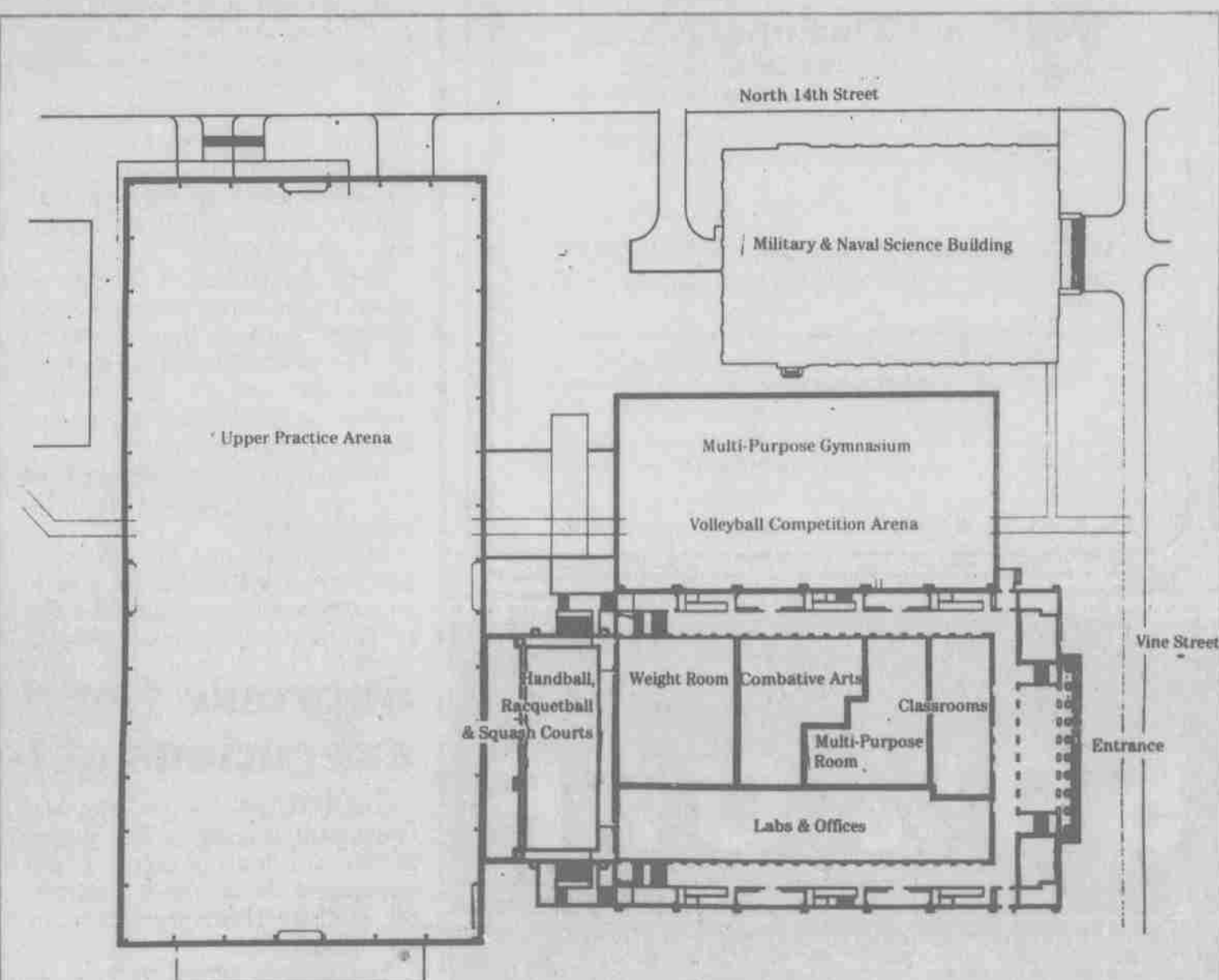
Thursday Millie Katz, coordinator of the Internships and Cooperative Education Office, will present possible internships for university students. Activities will be wrapped up Friday with a party at Robber's Cave on Highway 2 from 3 to 6 p.m. The public is welcome to attend any of the workshops and activities.

Panel to discuss ag jobs

Future employment opportunities in agriculture will be the topic discussed at a National Teleconference today at 9:30 a.m. in the East Union.

Five panelists will discuss the topic and answer questions from students at

UNL and 14 other universities in the United States. The panelists include Dr. Larry Case, head of agricultural education for the U.S. Department of Education and Charles Benbrook of the National Academy of Sciences.



This diagram is of the main level of the student recreation center and indoor practice field. The field level contains the practice football field, storage areas for the recreation and athletic departments, a swimming pool, lockers and showers, training and first aid center, and administrative offices for campus recreation, the athletic department and Health, Physical Education and Recreation.

The upper level contains an upper practice arena over the football field, an upper gymnasium and running track, a multi-purpose courts area and handball, racquetball and squash courts.