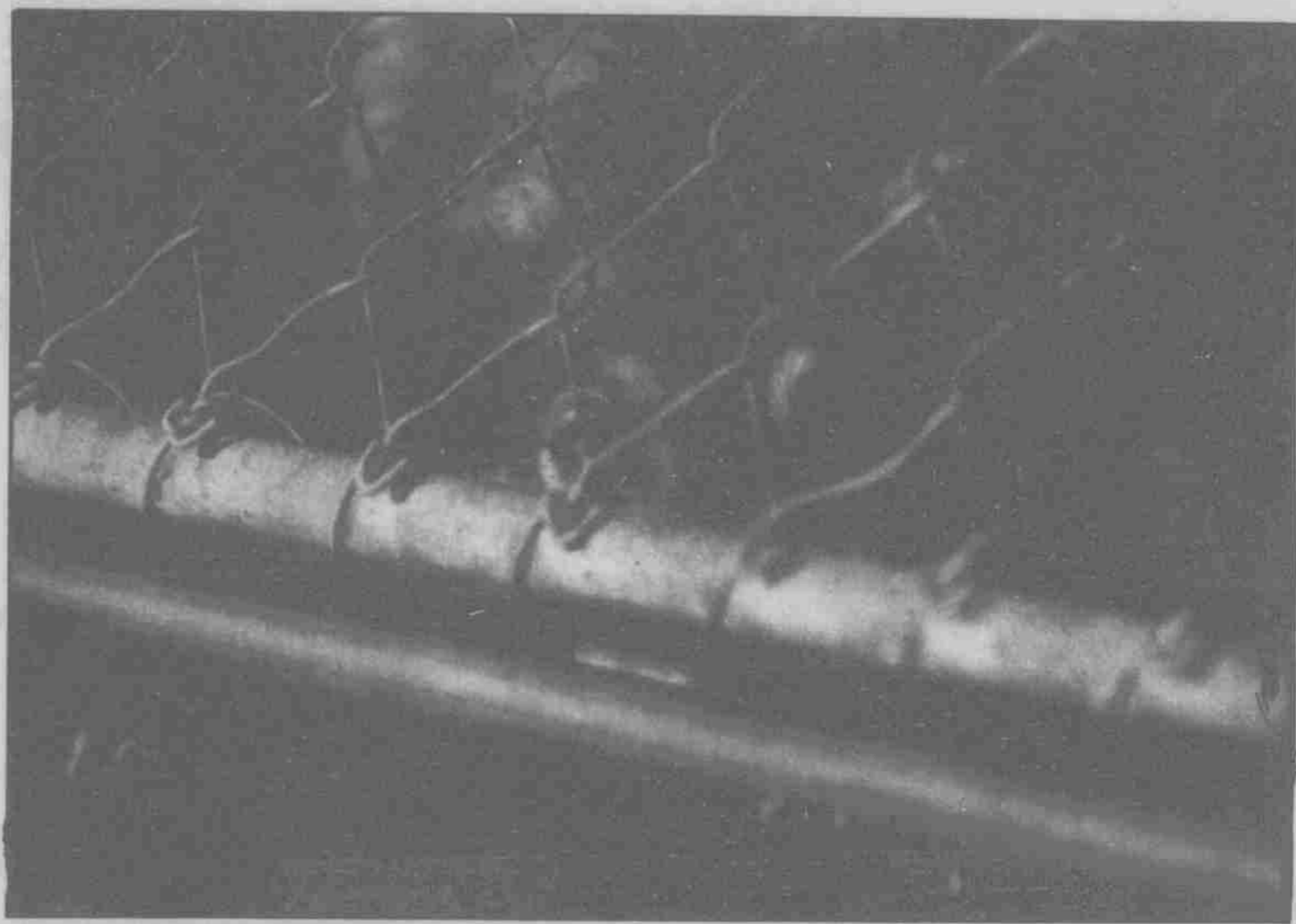
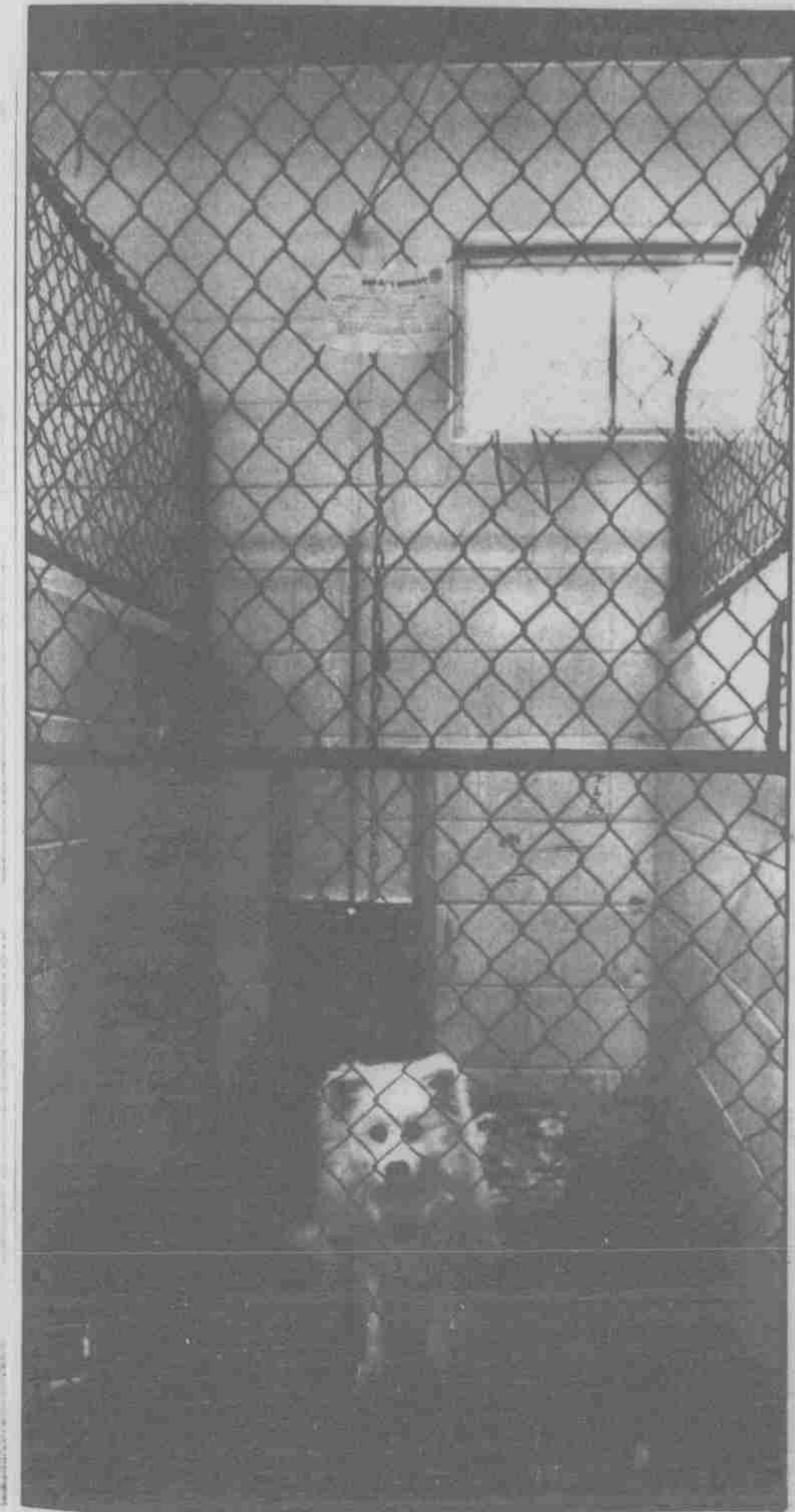
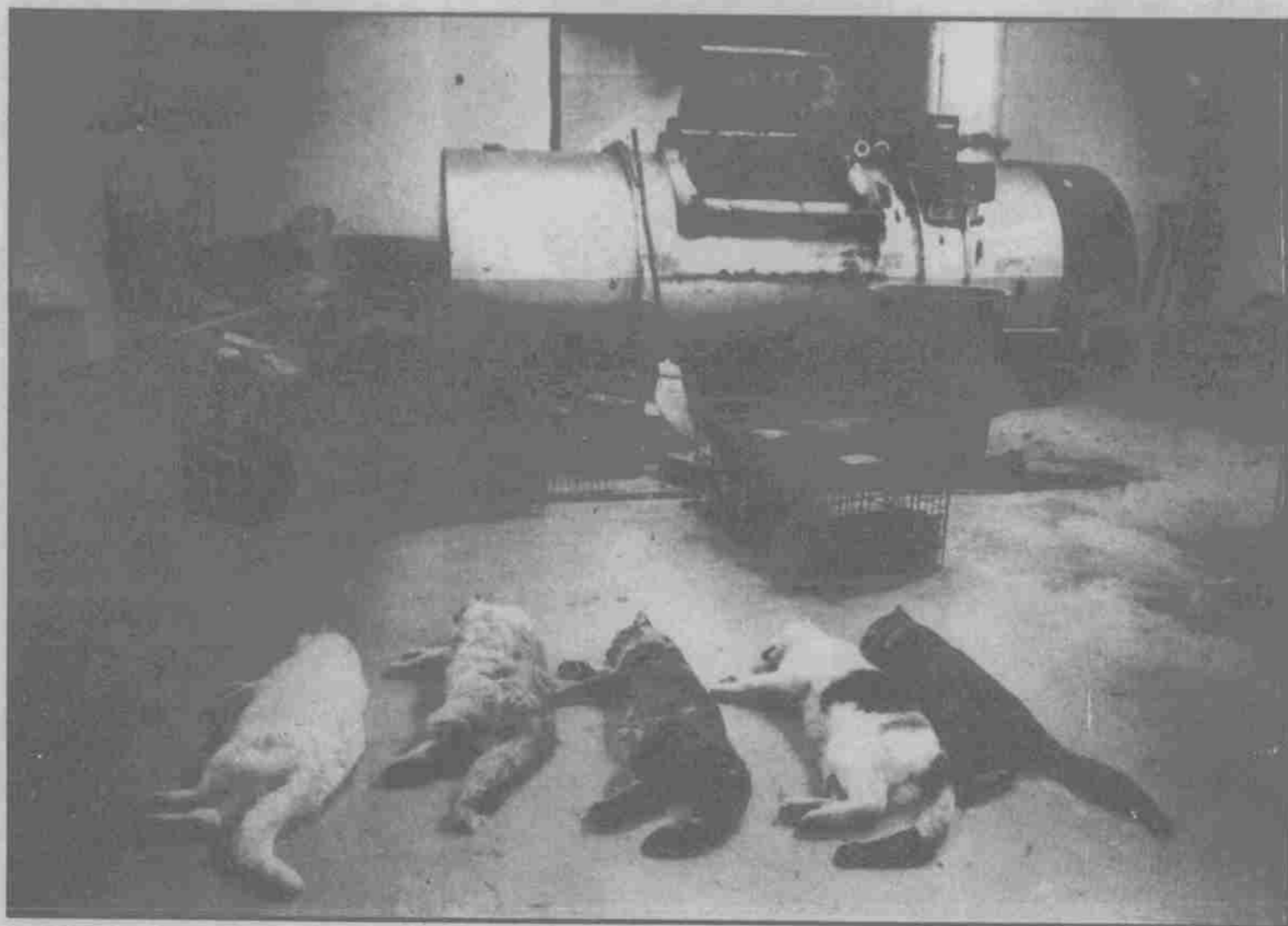


Animals euthanized



Clockwise from top right: This is the end result for approximately 50 percent of all animals brought to the Capitol Humane Society. A retriever peers from under its cage. A husky awaits adoption in its temporary "home." A Humane Society employee carries two cats to the euthanasia room to be "put down." Two Brittany spaniels look up to a prospective pet owner from their cage in one of the society's three kennels. Death is instant for this cat as the sodium pentobarbital is injected into its bloodstream.

APR 20 1987
CAPITOL HUMANE SOCIETY
1000 S. 10TH ST.
LINCOLN, NE 68502