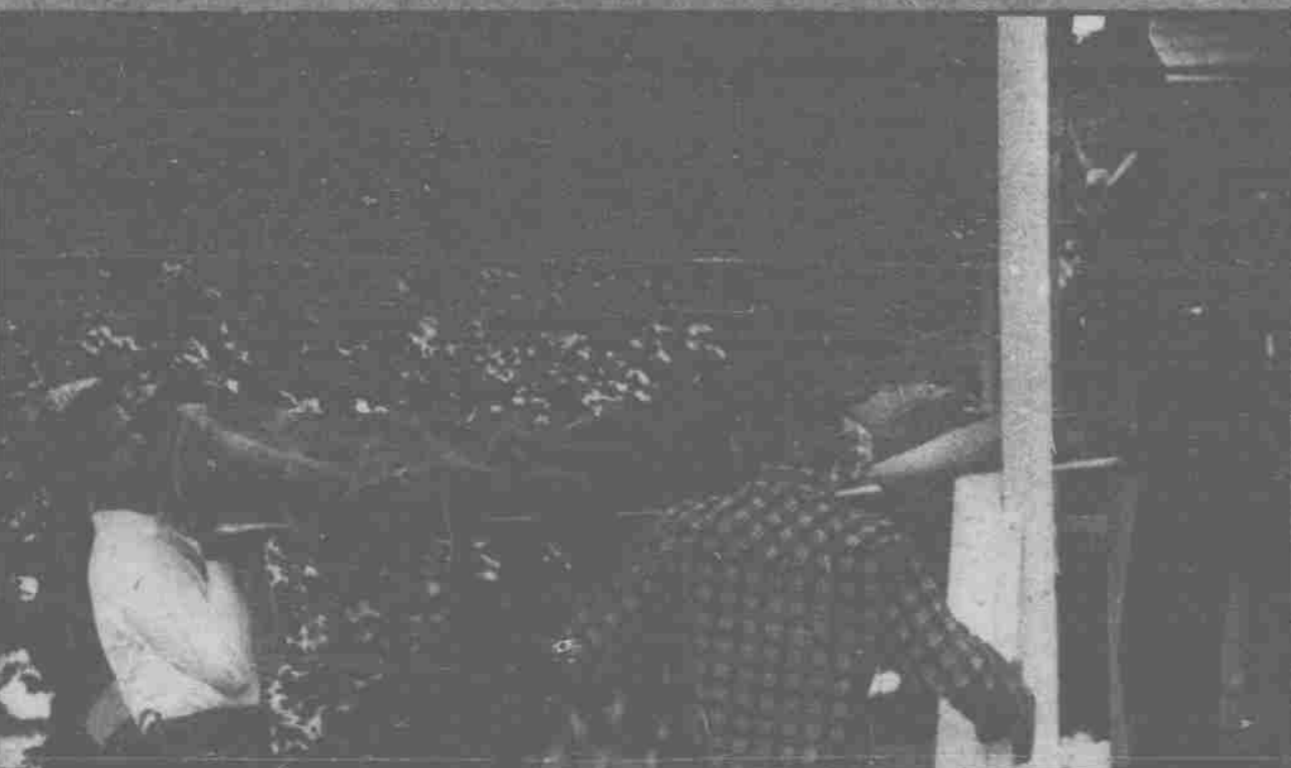


# THE TIMECLOCK



Photos clockwise from top: J. Alvin Ginsberg performs cardio vascular resuscitation unsuccessfully. As Ginsberg worked, he was told by a Bryan Heart Team member that they couldn't find a pulse; Eastern paramedics and members of the Bryan Heart Team transfer a heart attack patient from an airplane; Jeanine Cook comforts a patient after the patient recovered from unconsciousness; Kerry Clark and Cook lift a patient over a porch railing to transport the patient to the hospital after a fall; Ginsberg mops the floor of an ambulance after an emergency run.