

Single & Pregnant?

It can be a difficult time to make decisions. Child Saving Institute provides free and confidential pregnancy counseling services to help you explore the alternatives in planning for this new life. For more information, call collect Child Saving Institute.

(402) 553-6000
115 South 46th St.
Omaha, NE



**GAME DAYS
BRING YOUR BALLS
TO THE
HAPPY HOUR LOUNGE
1705 "O" St.**

Bring in a Basketball on the day of the game and get a FREE pitcher of beer.

**TOPLESS DANCERS
everyday 4 PM to close**

HIGH TECH CAREER OPPORTUNITIES

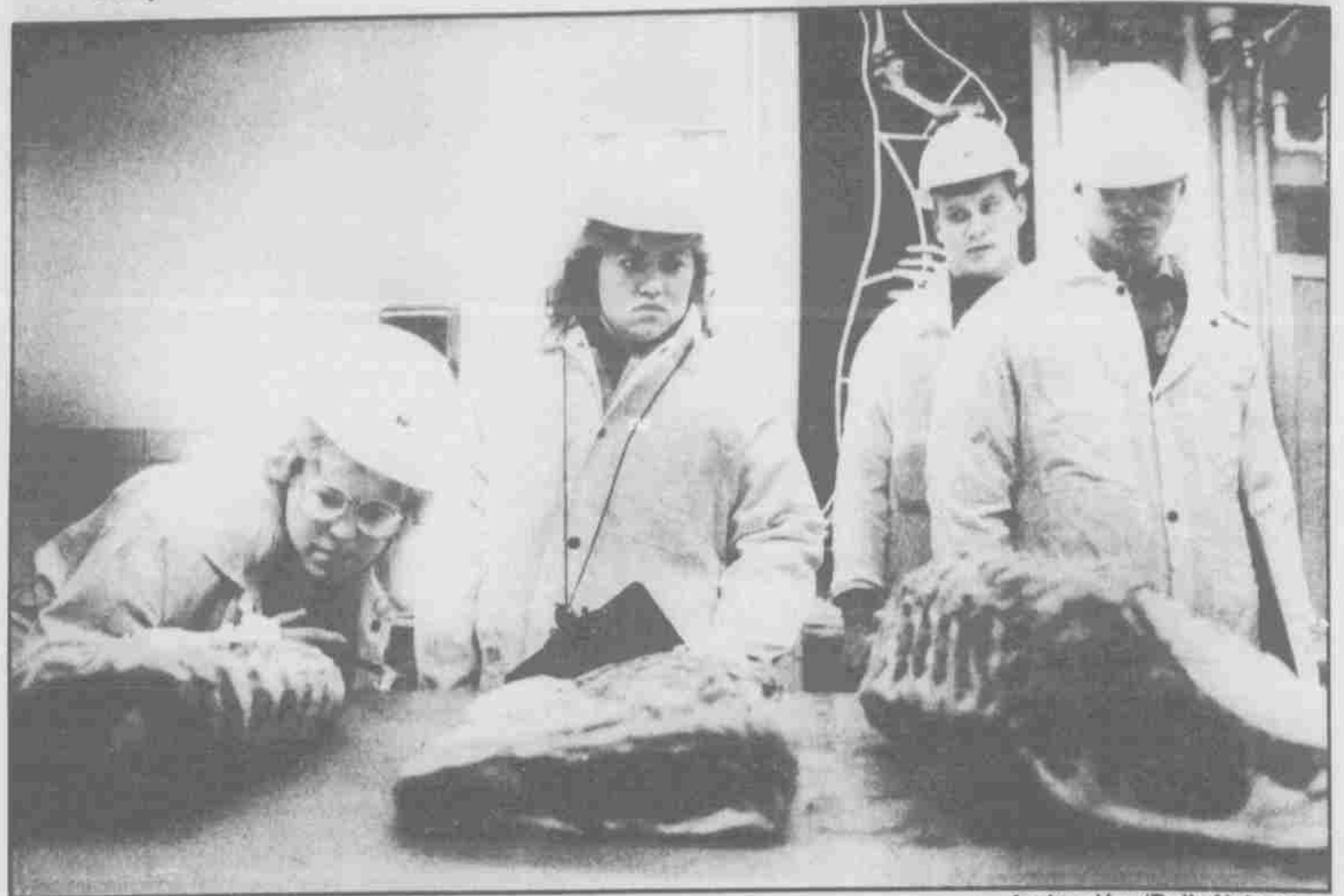
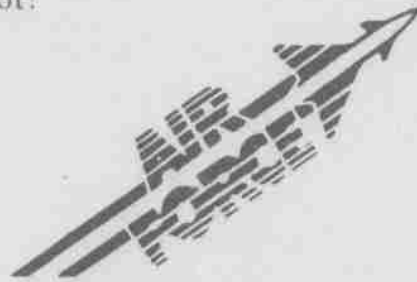
Your degree in Computer Science, Math, Meteorology, Communications or any technology-oriented field may qualify you for a rewarding career in the Air Force. You'll receive:

- THE OPPORTUNITY TO WORK WITH SOME OF THE WORLD'S MOST SOPHISTICATED EQUIPMENT
- MANAGEMENT EXPERIENCE
- GRADUATE EDUCATION OPPORTUNITIES
- 30 DAYS OF VACATION WITH PAY EACH YEAR
- WORLDWIDE TRAVEL
- COMPLETE MEDICAL AND DENTAL CARE

If you want to put what you've learned to work, call today! You may even qualify to become a pilot!
Contact:

Air Force ROTC
Maj. Larry A. DeBruin

CALL
(402) 472-2473



Andrea Hoy/Daily Nebraskan

From left, Julie Palmer, Kim Mohr, Steve Hunt and Larry Crowell judge different cuts of meat in Meats 212.

'To compete is an accomplishment'

Meat judging team to meet nationwide competition Sunday

By Kim Vavrina
Staff Reporter

After spending hours in cold meat lockers, the UNL senior Meats Judging Team is gearing up for its last and most important contest, the International Contest in Dakota City.

The contest Sunday will attract about 20 teams from across the country. The UNL team recently placed fifth at the Iowa State University contest and placed 13th at the American Royal contest in Emporia, Kan.

Julie Palmer, a junior pre-veterinary science-animal science major, said being on the team helps students who are interested in becoming packing plant meat graders get jobs.

She said team members spend about 13 to 15 hours a week judging meats.

Students look at the carcass instead of the live animal. Judges can see meat qualities such as fat and muscle, she said. By looking at a carcass, judges can determine the meat's toughness more realistically. Palmer said they don't have to guess about the meat's quality as they would if they looked at a live animal.

Only four team members judge in contests, Palmer said. The number of points scored in team practice determines who will judge in upcoming con-

tests, she said.

High caliber

Other senior team members include Larry Crowell, Meri Lynn Ahrens, Scott Kurz, Steve Hunt, Kim Mohr and Jill Stalnaker.

Coach Duane Starkey said "very high caliber" teams participate in the judging contests.

"To be able to compete at any level is an accomplishment," he said.

Starkey, an animal science graduate student, coaches the junior and senior meat judging teams. He also teaches Meats 212 and 312, prerequisites for joining the junior and senior teams, respectively.

Starkey said senior team members judge beef, lamb and pork carcasses; hams; beef wholesale cuts, and quality and yield grades of beef carcasses.

Meat is judged on product appeal and how well it cuts, among other criteria, he said.

Judging practice

To practice judging meat, the teams judge products available on campus through the Loeffel Meat Lab and at area plants.

During the fall on Saturday mornings, the senior team judges meat at several plants, including the IBP plant

in West Point, the Hormel plant in Fremont and the Spencer Pack in Schuyler.

Starkey said the teams earn their own money or accept donations for traveling expenses.

Palmer said she tried out for the team because "it's a different way to look at livestock."

She said she enjoys being on the team, but there are some drawbacks.

"It means no football games, and you have to think about getting to bed early, because we leave at 5 or 6 in the morning" to judge in meat lockers, Palmer said.

Police Report

Thefts reported

UNL police received two reports of thefts from vehicles Wednesday in Parking Area 3 north of Harper Hall. License plates were stolen from one car and stereo equipment stolen from another.

Windshield wipers were reported bent on a car in Parking Area 32 near Plant Science Hall and a car accident was reported in Parking Area 1 near 17th and R streets. No injuries were reported.

**PAUL REVERE'S
PIZZA
FREE DELIVERY**

Lunch M-F 11-1:30 PM
Dinner M-Th 4-1 AM
Friday 4 PM-2 AM
Saturday 11 AM-2 AM
Sunday 12 noon-12 mid.

475-6363

Corner of 17th & O
Next to U-Stop

\$2 OFF
Any 20" party pizza
(2 toppings or more)
22 oz. reusable plastic glasses of pop 50 cents ea.
(limit 2)
one coupon per pizza/limited delivery area
expires Dec. 31, 1985

\$1 OFF
Any 16" large pizza
(2 toppings or more)
22 oz. reusable plastic glasses of pop 50 cents ea.
(limit 2)
one coupon per pizza/limited delivery area
expires Dec. 31, 1985

FREE DELIVERY ★ FREE DELIVERY ★ FREE DELIVERY

Juniors, Seniors & Grads...

GIVE YOURSELF SOME CREDIT!

- Just bring a copy of your school I.D.
- No cosigner required

APPLY NOW ON CAMPUS!

Date: Wed. Nov. 20 and Fri. Nov. 22
Time: 9:30-1:30
Place: City Union
Sponsored by: UNL Marketing Club

Citibank (South Dakota), N.A. Member FDIC