

Renovations alter campus' look

By Terri Tabor
Staff Reporter

Many UNL students will find themselves sitting in newly renovated classrooms or trying to avoid construction sites of projects still in the works as the university approaches the end of its six-year renovation plan this fall.

recently banned all new construction projects for the next two years, projects already in the works will continue.

The renovations include Bessey Hall, which now will house the geology and anthropology departments and the geology library.

John Amend, assistant director of the UNL Physical Plant, said he thinks

students will be pleased with the work done on Bessey Hall. The project included installing new ceilings and windows, redoing walls and adding new floor coverings.

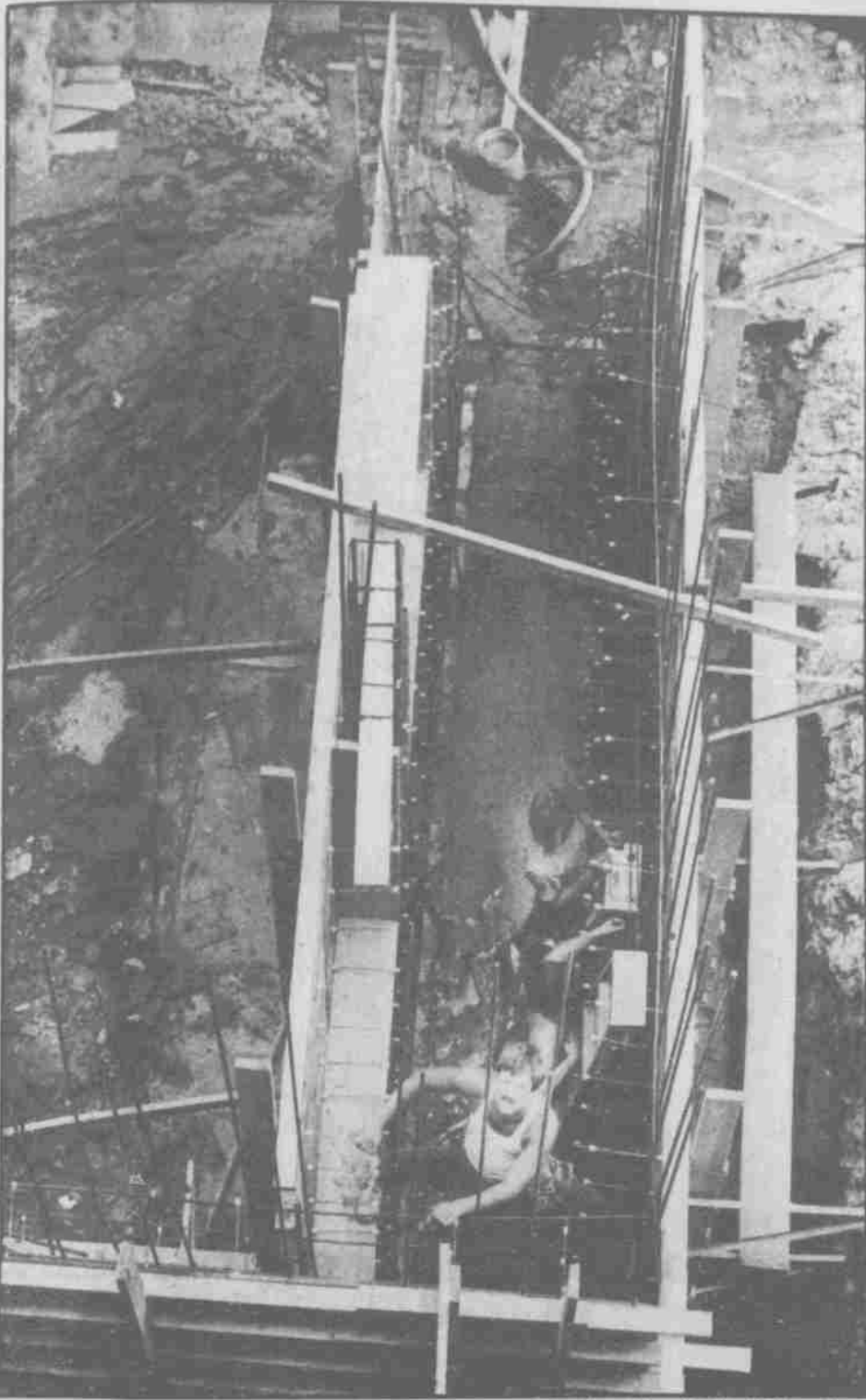
Other changes students will notice include the University Health Center, which has additional space; the new University Bookstore in the north half of the Nebraska Union's lower level and the connecting link between the Scott Engineering Center and Nebraska Hall. The link will house the engineering mechanics, electrical and mechanical engineering departments and the dean's office, he said. The completion is scheduled for June 1986.

The Former Law renovation also should be completed next June, Amend said. The project involves building a connecting structure between Former Law and Architecture Hall, renovating offices, removing every other floor in the library stacks to provide more space and excavating the basement to build shops previously in the basement of Richards Hall. After the Former Law project is completed, renovations will begin on Architecture Hall, which will be finished in July 1987 if funding is available for the project, he said.

East Campus hasn't been left untouched, Amend said. Construction is underway for the Animal Science Building and an addition will connect Baker Hall and Loeffel Meat Lab. The old barn will be torn down, and replaced by one that will be used for lab judging, new labs, a large receiving area and new stock yards.

Estimated costs for the new renovations are as follows:

Bessey Hall	\$3.45 million
Architecture Hall/ Former Law	\$4.33 million
Animal Science Bldg.	\$19.2 million
University Health Center	\$3.06 million
University Bookstore	\$1.8 million
Addition to Barkley Memorial Center	\$1.81 million



Andrea Hoy/Daily Nebraskan

Construction is under way for a new adjoining building between Former Law and Architectural Hall. Former Law is being redone now, and construction on Architectural Hall will start next spring.

If it writes in space and at temperatures below -50°F, surely it can get you through summer school.

fisher *SPACE PEN*

*Selected by NASA. The astronauts relied on it so you know it's dependable.

*Writes at any angle — even upside down!

*Regularly \$2.98
Now, for Back-to-School \$2.49

BACK TO SCHOOL OFFER

Guaranteed to write for one year or you receive a **FREE SPACE PEN** refill

Best of all, you'll find it at Ken's for Pens.

Ken's for Pens *Mike*

1 1/2 Blks. S. of Campus
Garden Level
Douglas III BLDG.
210 N. 13th St.
474-3435

25% Student Discount On Portable Electronic Typewriters!

Canon
ELECTRONIC TYPEWRITERS

Bring this ad to Nebraska Business Electronics, Inc. and receive **25% OFF** on all our Canon Portable Electronic Typewriters until September 30, 1985!

■■■ Nebraska Business Electronics, Inc.

**3101 "O" St.
435-8990**

VOLKSWAGEN PEOPLE

we care

CARE ABOUT YOUR CAR

FREE PICK-UP AND DELIVERY WHEN YOUR CAR NEEDS REPAIR

When your Volkswagen, Audi or Subaru needs service, take it to McDonald Motors. We'll take you home; then pick you up when it's done.

For free. But more important, we have factory-trained mechanics specialized in Volkswagen, Audi and Subaru repair. And they are winners of the Volkswagen National Award of Merit for Service.

So, you can be sure of quality, professional service. Don't trust your Volkswagen, Audi or Subaru with anyone. Come to us. We have twenty years of experience to back us up.

McDonald Motors

1241 N. 48th
464-8234

STEPPING OUT IN NEW DIRECTIONS

U N L · D A N C E ·

1985-86 dance season

CHAMBER DANCES
october 17-19, 8 pm
howell theatre

ORCHESIS CONCERT
november 22, 23 8 pm
mabel lee dance theatre

NEW DANCE FESTIVAL
january 24, 25 8 pm
kimball hall theatre

UNL DANCE SHOWCASE
april 16-19, 8 pm
mabel lee dance theatre