

Classified 472-2588

UNL'S FIRST VIDEO DANCE
This is it! TONIGHT! 3 hours of the latest videos — New wave, Funk, Pop — All blown to maximum proportion! Don't miss this — 8:30 City Union Ballroom — 99¢.

roommate

*Male roommate to share large apt. \$107.50 plus 1/2 electricity. Call 435-3970.
Non-smoking mature male to share home between campuses. Call evening after 7 p.m. weekdays/after noon on weekends. 435-4922.

Male roommate to share 2 BR apt. Heat paid, large living room, dining room, kitchen, sun porch, garage, bus and laundry close by. 474-4518. Keep trying.
1 male roommate close to City Campus \$115 plus utilities. 1600 Knox #5. 435-2845.

Need roommate to share large 3 bdrm. apt. — Oct. 1. Own bedroom \$93.75 plus utilities, ht. and water paid. Call 474-3378.

Roommate to share house w/fireplace. Male/Female, approx. \$190 inc. utilities. 474-7183 Adele.

personals

Jon T.
Here's your first personal wishing you a very Happy 18th Birthday, bro!

To the sorority girls in black dresses, who jumped in front of my black 240Z to take a picture on Tuesday, 4... can I get a picture too?
Schramm 807

STACEY,
Congratulations on pledging Chi Omega. Good luck this year.
Love, Tom

SAM Pledges.
The Little Sisters of SAM would like to welcome the 1983 Sammy pledge class to UNL. Get ready for a GREAT year!

Mary R.
Happy Birthday Rookie! Good Luck Saturday.
Your favorite R.L. S-12

CONTACT LENSES

NAME BRAND
Replacement & Spares
SOFT LENSES

From \$19.95 ea.

FAST SERVICE NATIONWIDE

1 800 255-2020 Toll Free

EYE CONTACT

Boy P., Gail T.
Congrats on pledging Gamma Phi and Chi O. You're two classy ladies.
Jeff (TKE)

The women of Kappa Kappa Gamma are proud to announce our beautiful new pledge class. You all are super!

Azra A.
Jean D.
April D.
Melanie E.
Jan E.
Deborah H.
Megan H.
Lisa H.
Pamela H.
Tami J.
Tiffany L.
Ann L.
Betsy M.

Margo M.
Paula Jo M.
Carol M.
Marcia S.
Renee S.
Marcia S.
Shelly T.
Deborah V.
Barb V.
Tamara W.
Kimberly W.
Jacqueline W.

David (S.D.).
Happy Belated 21st. Hopw it was AWESOME!
143 Andrea

D.G. Pi Alphas.
It is so wonderful to have you on board! Your cruise has just begun, and your new sisters are beside you all the way to make it the best ever. Smooth sailing, and... You went what you oughta went — D.G.I.
Love, The D.G. Activists

Jennifer & Kathryn (A-Phi Pledges)
Congratulations! Welcome to Alpha Phi. It is great to have three Wauneta girls! Have a good week!
Love, Mary

B. Gatz. (Scooby Doo).
Happy Belated Birthday! Call if you're busy Thurs. night. Mr. Flashlight has a surprise for you!
Knox #6 Vanhunters

Dear "Mike" (KE):
I'm still recovering from my last asthma attack, but thought I'd take time to tell you to have a wonderful day!
P.S. Beware of "Biker Broads"

He Ha Ha — "E"

AMA BID TAPS
HEMAN SATE ALIT
ELAND HEEP TEES
MINDOVERMATTER
FARED ROO
NOTRE NOTTOBE
KOREA TEPEE RLS
IDAS RAVED ROUT
TEL METES PETTY
SLEEPER BATHE
CSA OUTRE
INTOPLOWSHARES
ALOE EIRE ACRES
LEON RELS NEARS
ESNE SNY DDT

services

Pregnant Too Soon?
Adoption is a caring alternative. Call us in confidence. We'll give you the facts. Nebraska Children's Home 493-7872.
FREE PREGNANCY TESTING

NOT ENOUGH ROOM?

Store your off-season goods at Infinity Storage.
475-2484

TYPEWRITERS
RENTAL-SALES-SERVICE
BLOOM'S
323 N. 13th
474-4138

miscellaneous

CLOVE CIGARETTES
CLIFF'S
1200 "O" Street

lost & found

LOST: All my anxieties & stress.
FOUND: A relaxing experience at the TUBBERY, Lincoln's private hot tub rooms establishment, for reservations and information phone 475-8989 after 3 p.m.

GAY/LESBIAN INFORMATION
AND SUPPORT LINE

P.O. BOX 94882
LINCOLN, NE
68589

GLIS

SUN. - THUR.
8:00 p.m. to 12:00 a.m.
FRI. & SAT.
8:00 p.m. to 1:00 a.m.

475-4697

CROSSWORD PUZZLE

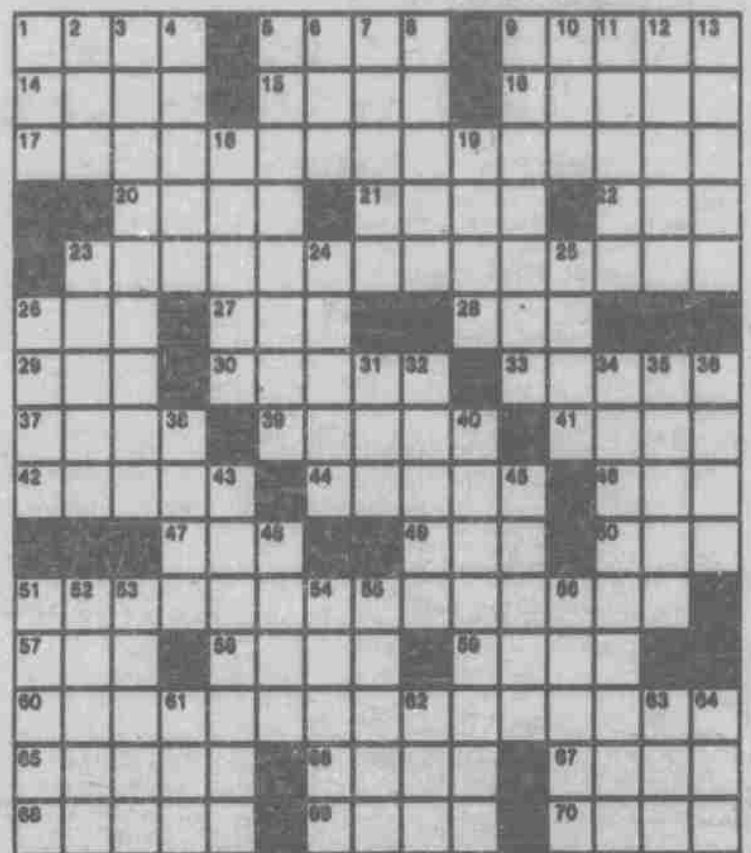
Edited by EUGENE T. MALESKA

ACROSS

- 1 Burden
- 5 Italian seaport
- 9 Distort
- 14 Monthly bill
- 15 Actor O'Neal
- 16 Reckon
- 17 Showed excessive politeness.
- 20 Party to
- 21 "Play" — It Lays — Didion
- 22 Harper Valley org.
- 23 Pilot's concern
- 26 Chick
- 27 Puppeteer Baird
- 28 Peete's org.
- 30 Black bird
- 30 Salty drops
- 33 Jostle
- 37 Ache
- 39 Diner's "turf"
- 41 Hindu god of love
- 42 Norse sea god
- 44 Kind of heat
- 46 Disencumber
- 47 Chou En —
- 49 Blind impulse personified
- 50 Air Force
- 51 Theme song of early TV, with "It's"
- 57 A cont.
- 58 Pope in 903
- 59 Roy's missus
- 60 Latin student's song of joy
- 65 Moorehead or De Mille
- 66 Trudge
- 67 Group attraction in Vegas
- 68 Toomey or Philbin
- 69 Creatures with no sweat glands
- 70 Soprano Mills

DOWN

- 1 Eye, to a poet
- 2 Prefix with classicism
- 3 Loath
- 4 Note taker
- 5 Marc and kirsch
- 6 Novelist Rand
- 7 Car appurtenance
- 8 Tchr.
- 9 Dance souvenir
- 10 — Locka, Fla.
- 11 Fra Lippo —
- 12 " — a customer"
- 13 Tooth-shaped fortification
- 18 Distrust
- 19 Home away from home
- 23 White-water craft
- 24 Some cockney abodes
- 25 Gossip
- 26 Festive
- 31 Auto acronym
- 32 "Crazy —," Ephron book
- 34 Change indicator
- 35 "Mother —," Kipling poem
- 36 Walk through snow drifts
- 38 Ove. lay with gold
- 40 Grasshoppers' kin
- 43 Dark and gloomy, as a cave
- 45 Affix a "marked-down" label
- 48 Thought
- 51 "Horrible" Viking of the comics
- 52 "Coming — in Samoa," Mead book
- 53 Twisted
- 54 Vim
- 55 Rudimentary seed
- 56 Words on an old campaign button
- 61 "Agnus —"
- 62 Absalom, to David
- 63 Prefix with corn
- 64 Delicacy from the sea



A STUDENT SPECIAL

Final 2 Days!

only
\$9¹⁷

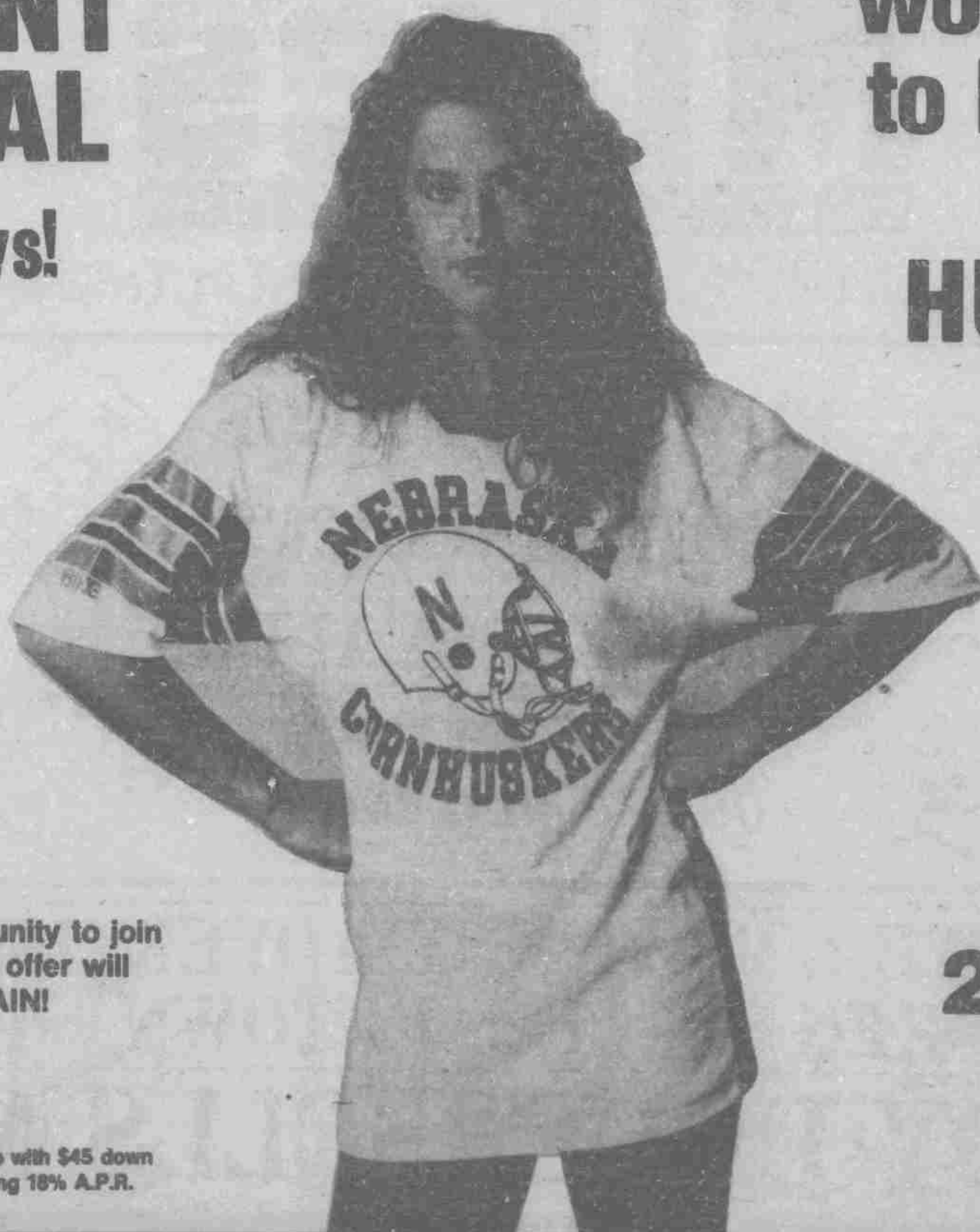
a month

Don't miss this opportunity to join
24 Hour Nautilus. This offer will
never be available AGAIN!

*Based on a one year membership with \$45 down
and 12 payments of \$9.17 including 18% A.P.R.

We know you would like to have!

HURRY IN!



24 HOUR Nautilus

Swim and Fitness Center, Inc.

1400 North 48th
Lincoln
467-5551