



# Rec Scoreboard

(Sportsmanship ratings in parentheses)

## Men's Basketball

### Small Fry

Tau Kapa Epsilon (4.0) 70, Phi Gamma Delta (3.2) 39.  
Average White Team (3.6) 62, Theta Xi (3.6) 32  
B. C. Boys (1.7) 50, The Kids (3.0) 48  
Delta Tau Delta (4.0) 47, Sigma Nu (4.3) 31  
Phi Kappa Psi (4.0) 58, Harper Eight (4.2) 49  
Scum of the Earth def. Harper Nine by forfeit  
Sigma Alpha Epsilon #2 (3.7) 45, Chi Phi (3.5) 18  
Sigma Alpha Epsilon #1 (4.3) 57, Abel Six #2 (4.6) 45  
Cather Nine (4.2) 46, Kappa Sigma (4.0) 43  
Hosers (3.7) 63, Spud Boys (3.0) 32  
Sigma Phi Epsilon (3.2) 55, Ducks (3.5) 46  
Lambda Chi Alpha (3.3) 47, Triangle (3.6) 26  
Alpha Tau Omega (4.0) 54, Superior Place Five (4.0) 24  
Culture Center (3.5) 69, R Street (3.5) 51  
Abel Six #1 (4.0) 69, Short Stuff (3.2) 38

## Lightweights

Came Cocks (3.3) 58, Harper Five (3.0) 43  
Basketball (3.8) 46, Harper Seven L (3.6) 16  
Reds I (2.5) 66, Delta Upsilon (3.2) 49  
Not Ready for BB Players def. Phi Kappa Psi by forfeit  
Old Style (4.0) 64, 8100 Selleck (3.5) 34  
Beta Sigma Psi (3.5) 55, Temporary Heroes (3.5) 51  
Abel Eight (4.0) 47, Burr Two West (4.0) 44  
Burr One West def. 8200 Selleck by forfeit  
Heavyweights (4.0) 49, Sidetrack (4.0) 35  
Who Knows, Cares, Why Bother (4.0) 49, Acacia (3.3) 35

## Faculty and Staff

CBA Two (4.0) 35, Hamilton Animals (4.0) 17  
Forestry (4.0) 31, Aggies (4.3) 26

## Independents A

Brass Rail (2.6) 85, Bloto's Streak (3.3) 64  
The Shrooms (3.3) 59, Board Members (3.6) 47  
No Names (3.7) 39, NROTC (4.2) 35

## Independents B

Hoyas (4.2) 44, Airballers (4.2) 40  
Holysmokers (4.5) 67, Love Brokers (4.7) 45  
Blobs (3.2) 45, C. J. and Boys (2.5) 44  
Bucks (4.0) 60, LXIXERS (4.0) 30

## Co-Rec Volleyball Playoffs

### Class A

Leftovers (4.0) def. Acacia/Chi Omega (4.0) 12-15, 15-9, 15-7

Total Sound (4.5) def. Sigma Phi Epsilon (4.0) 15-11, 15-6  
Scrodfish (4.0) def. Schramm Four/Smith Ten (4.0) 15-11, 15-6  
Total Sound (3.7) def. Six Pack (3.7) 15-9, 15-3

## Class B

Barely Legal def. High Five Bros. by forfeit  
Holysmokers (3.7) def. Beginner's Luck (4.0) 15-3, 15-2  
Quotation Marks (4.7) def. Harper Eight (4.2) 15-10, 15-6  
King's Kids (3.7) def. Dirty Diggers (4.0) 15-1, 16-14  
King's Kids (4.7) def. Barely Legal (3.7) 15-4, 15-10  
Slugs Jrs. (3.7) def. Beta Sigma Psi Buckhorns (2.7) 12-15, 15-12, 15-6

## Indoor Soccer

### Men's

Caspian def. Phi Delta Theta by forfeit  
Phi Gamma Delta (3.0) 2, Tau Kappa Epsilon (3.2) 0  
Beta Theta Pi (3.4) 6, Sigma Nu (3.4) 3

### Co-Rec

Lambda Chi Alpha (3.8) 4, Delta Tau Delta (4.0) 2  
Abel Thirteen (3.5) 6, Ag Men/Love Hall (3.7) 3

## Bowling

### Night Owls, East Union

Men's high game — Mark Smith, Spare Change 173  
Men's high series — Greg Havelka, Spare Change 478  
Women's high game and series —  
Ann Harkreader, Killer Currettes 191, 433  
Peg McGinty, Killer Currettes 433

Brighten someone's day —  
send a personal in the  
Daily Nebraskan



## ON CAMPUS CAR SERVICE

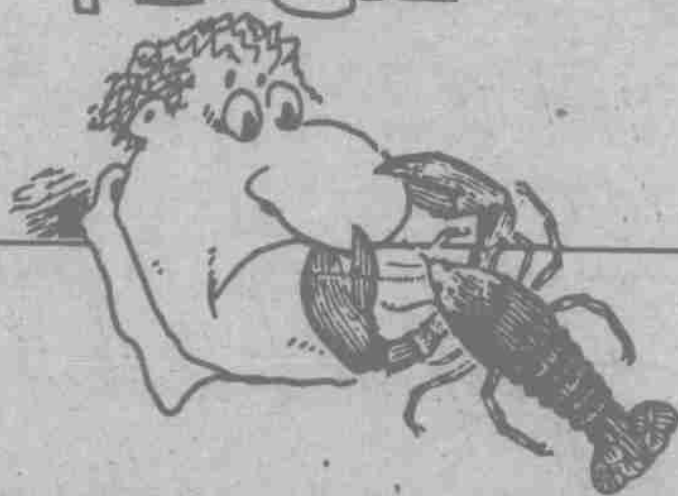
- \* Specializing in foreign and American models
- \* Certified Automotive Technicians
- \* Full & Self Service Gas



## QUE PLACE STANDARD

17th & Que Streets  
Lincoln, Nebraska 68508  
402 475-8619

IN A  
PINCH?



Long on studies and short of time? And Cash? Become a plasma donor! You can earn up to \$100 a month, for just a few hours spare time and study while you're doing it! (And it's much less painful than a lobster on your nose!)

\$10 is paid for each donation and you can donate twice a week (but please wait 72 hours between donations). New donors bring this ad for an additional \$2 for your first donation.

Call for an appointment — and find out how you can win \$100 in our monthly drawing!

**475-8645**

**University Plasma Center**  
1442 O Street

MON., TUES., THURS., FRI. 8:00 am to 7:00 pm  
WED. and SAT. 8:00 am to 6:00 pm

FEDERALLY INSPECTED

# Campus Recreation offering spring trip to Mayan Mexico

Springtime in Lincoln. The fragrance of wet cement fills the air and one can see the ASUN candidates in full bloom. Compelling reasons both to spend spring break in the heart of Big Red Country.

But, believe it or not, one can actually tire of P.O. Pears and Pioneers Park. When that infrequent inevitability occurs this year, the Office of Campus Recreation offers you a chance to explore Mayan Mexico.

Mark Ebel, assistant director of campus recreation, is leading a trip to the Yucatan Peninsula from Wednesday, Mar. 21 through Sunday, April 1.

Ebel said the purpose of the trip is to provide participants with a chance to experience Mexican culture and to offer them an opportunity to learn and practice outdoor recreation skills.

The trip will include visits to Cozumel Island just off the peninsula to skin dive, the town of Palenque to hike, and the city of Merida to experience everyday Mexican life.

The first two days of the trip will be spent alternately driving and flying to the small inland town of Palenque,

Ebel said.

Palenque is an ancient Mayan ceremonial center and will offer participants a chance to see the ruins of Mayan civilization. Ebel, who led the trip the past two years, said most of the ruins are in the jungle and much of the group's hiking will be done in those same jungles.

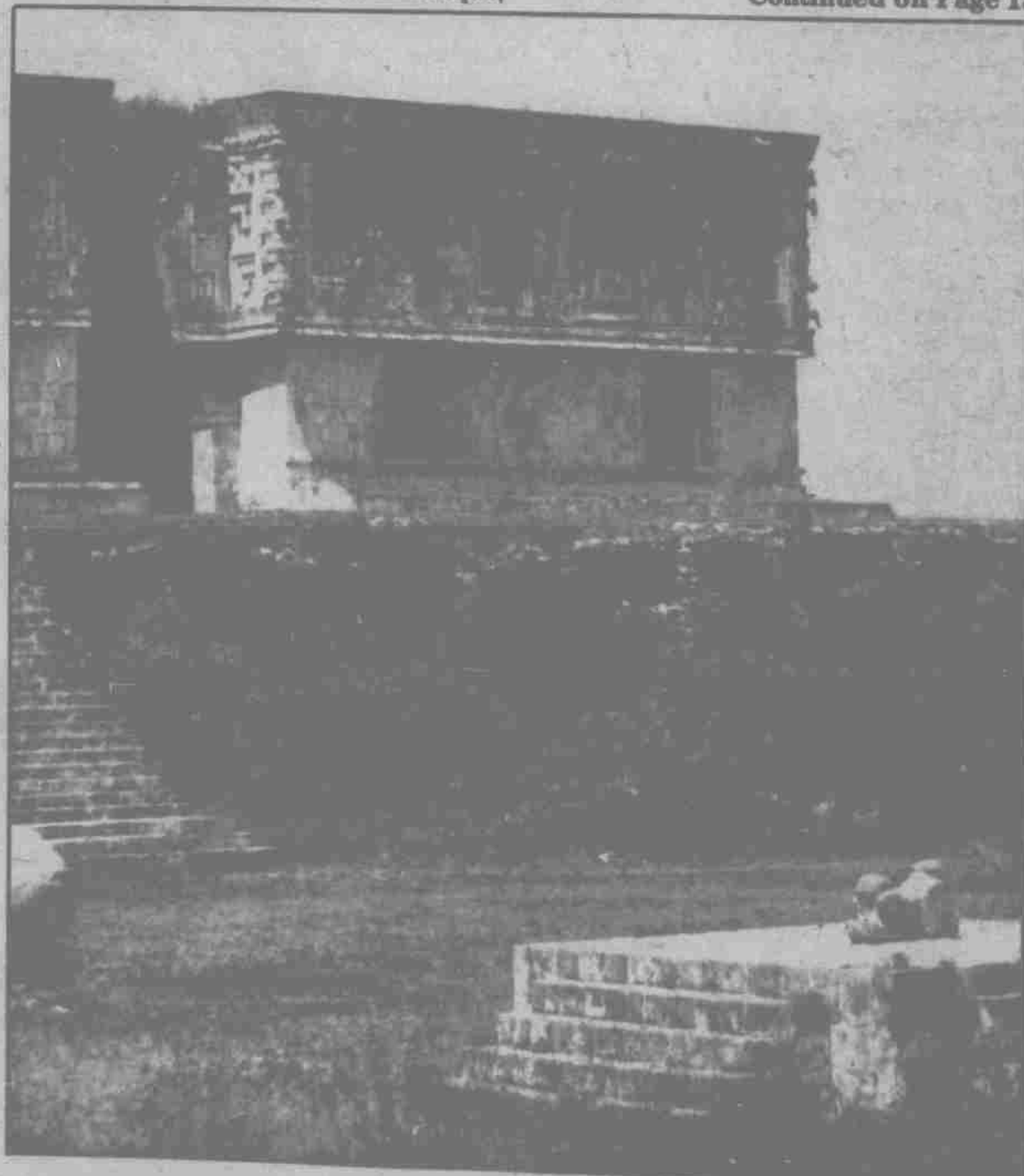
The hiking is not designed to be difficult, Ebel said. In fact, he said most of the outdoor activities are designed for beginners.

All one will need to hike is a pair of tennis shoes or light boots, he said.

After four days in Palenque, the group will go to the peninsula's capital city, Merida. Ebel said that while in Merida, participants will be away from tourists for the longest stretch during the trip. Public squares and famous restaurants are the main attractions in Merida, Ebel said.

Participants will be on their own to do as they like in Merida, Ebel said, but he will have suggestions where to go if needed.

Continued on Page 13



Mayan ruins near Uxmal in the Yucatan Peninsula await UNL students accompanying the Office of Campus Recreation on their trip to Mexico over spring break.

Office of Campus Recreation