



Letters

Bible 'indestructible'

Concerning the column in which Krishna Madan made an attack on the Bible (Daily Nebraskan, Feb. 3), I can only respond by saying that I really feel sorry for this man.

I feel sorry for someone who believes they are a blood relative to the ape family.

I feel sorry for someone who establishes a viewpoint based upon figments of the imagination and twistings of historical testimony.

I feel sorry for someone who can be face-to-face with the truth and yet deny it because of the conviction it places upon him.

Most of all, however, I feel sorry for Mr. Madan because on the day of judgment, he, like all the rest of us, will have to give an account of his life before Jesus Christ himself.

I hope Mr. Madan can come to his senses and open his eyes to the truth that he is so vainly trying to persecute. I'm sorry Mr. Madan, but the Bible will remain as it always has — unchanged and indestructible.

Warren Ely
senior
business

Police priorities wrong

Recently, I went to the UNL basketball game and when I returned, found that my car had been towed to Lincolnland because of unpaid parking violations. Under other circumstances, I wouldn't be complaining.

The evening that my car was towed, I was parked in the meter lot just north of Abel Hall. Now, what I am wondering is just what the UNL Police were doing checking meters at 10 p.m. when you don't have to pump money into the things.

If this is the way UNL Police works, I think we should be trying to change things.

Kent K. Kehlenbeck
freshman
horticulture

Husker fans obnoxious

For us, basketball is a sport to be enjoyed. However, we did not enjoy the Feb. 1 game because the fans around us, students and adults, were obnoxious. Perhaps an occasional negative comment is to be expected, but when they continue throughout the game, they become unacceptable.

We feel that the fans are there to support the team, not make derogatory comments about the coaches, players and referees. Why give up hope and try to decide why we lost the game before it is over? Perhaps these people should try out for the team, apply for a coaching position or become a referee if they think they could do a better job.

We are proud of the Huskers!

Heidi Elfeldt
freshman
home economics

Kristi Smith
freshman
agriculture

Daily Nebraskan

EDITOR Larry Sparks, 472-1786
GENERAL MANAGER Daniel Shattil
PRODUCTION MANAGER Kitty Policky
ADVERTISING MANAGER Tracy L. Beavers
ASSISTANT Kelly Grosseohme
ADVERTISING MANAGER Steve Meyer
CIRCULATION MANAGER Ward W. Triplett III
NEWS EDITOR Lauri Hopple
ASSOCIATE NEWS EDITORS Jann Nyffeler
Vicki Ruhga
Jeff Browne

SPORTS EDITOR Mike Frost
ARTS & ENTERTAINMENT EDITOR Pat Clark
COPY DESK SUPERVISOR Patty Pryor
NIGHT NEWS EDITOR ASSISTANT Jeff Goodwin
NIGHT NEWS EDITOR Chris Welsh
WIRE EDITOR Lorri Mongar
ART DIRECTOR Craig Andersen
PHOTO CHIEF

The Daily Nebraskan (USPS 144-080) is published by the UNL Publications Board Monday through Friday in the fall and spring semesters and Tuesdays and Fridays in the summer sessions, except during vacations.

Readers are encouraged to submit story ideas and comments to the Daily Nebraskan by phoning 472-2588 between 9 a.m. and 5 p.m. Monday through Friday. The public also has access to the Publications Board. For information, call Carla Johnson, 477-5703.

Postmaster: Send address changes to the Daily Nebraskan, 34 Nebraska Union, 1400 R St., Lincoln, Neb. 68588-0448.

ALL MATERIAL COPYRIGHT 1984 DAILY NEBRASKAN

Letter Policy

The Daily Nebraskan welcomes brief letters to the editor from all readers and interested others.

Letters will be selected for publication on the basis of clarity, originality, timeliness and space available. The Daily Nebraskan retains the right to edit all material submitted.

Submit material to the Daily Nebraskan, 34 Nebraska Union, 1400 R St., Lincoln, Neb. 68588-0448.

FREE UNIVERSITY

Non-Credit Mini-Courses

Register for classes from
10 AM-2 PM on February 10,
13, 14 & 15

in Nebraska Union Lobby.

Registration fee per class:

UNL students: \$1.00

No-students: \$2.00



Questions?
call
472-2454



Art of religion . . .

Continued from Page 4

It is because humans have not assumed control over all aspects of their social and economic life that they invariably produce religions in which the human desire for a communion with all of humanity has been replaced by an alienated desire for a communion with an abstract, non-existent being who embodies all the potential and hope that rightfully belongs to us.

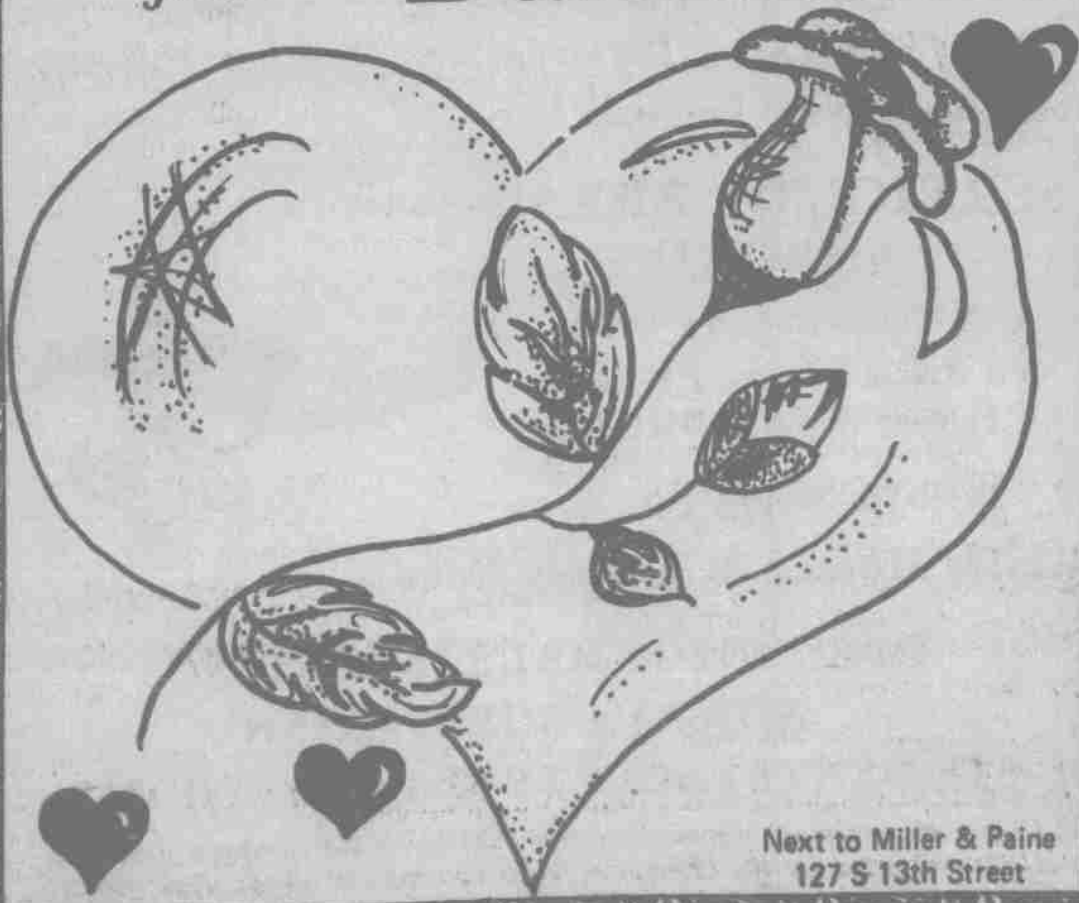
However, a democratic world government in which work is shared and the products of labor are rationally and consciously distributed is possible. To help bring this about, we must stop

attributing the power that lies within us to artificial creations of our tortured consciousness.

We must become totally self-conscious, of ourselves as one species and of the implications of this. Only then will we be able to truly transcend ourselves by building the bonds with all of humanity that will give a real meaning to the struggle for existence.

In such a society, religion — with all its symbolic myths that contain essential and fundamental truths of human existence — will continue to play an important role as the best and most intense form of human artistic expression.

Get to the heart of the season
with flowers from Danielson's



Next to Miller & Paine
127 S 13th Street

Know What Came With My Contact Lenses?



Cheri Heller/Dan Ernst
Students — University of Nebraska

- Free in-office consultations to discuss my eyes and contact lenses
- A thorough examination of eye function and eye health by my doctor
- Individual selective fitting considering the following contact lenses that the doctors use:
 - Regular Soft Lenses (over 40 different lens types)
 - Soft Lenses for Astigmatism
 - Extended Wear Soft Lenses (5 types — can be worn while sleeping)
 - Tinted Soft Lenses
 - Gas Permeable (4 types)
 - Hard Lenses
 - Bifocal Soft and Hard Lenses
- Full time availability of doctors and staff (evenings, lunch hours & Saturdays)
- Close supervision of all contact lens fittings by expert professionals
- Individual private instruction on care and handling of any lens type
- Six weeks follow-up care with the office that includes trial program for:
 1. Close observation of comfort and eye health monitored as needed
 2. Lens strength or fitting modification if indicated
 3. No charge for damaged lenses — minimum charge for lost lenses

This follow-up care is, of course included in the original fee

- Immediate replacement of most lenses
- A continuing care program — future upgrading of lens care and of contact lenses as scientific progress is made

Special 24 Hour Contact Lens Information Service — 475-4040

International
Contact Lens
MALBAR VISION CENTERS.
3200 'O' St. 475-1030

* No Interest
* No Carrying Charge
\$20/month
Budget Plan