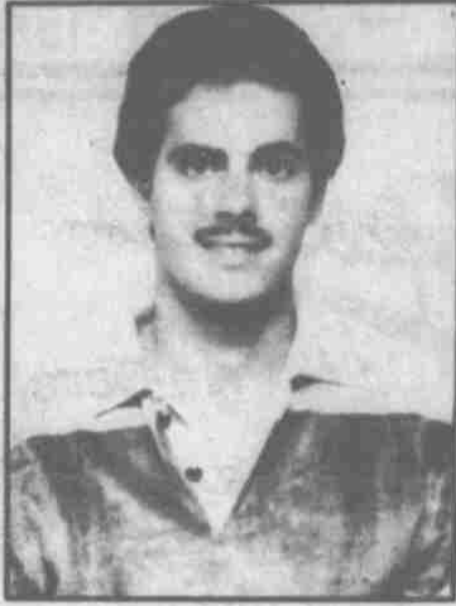


Monday  
SEPTEMBER 26  
2:30-4:30

# Alcohol Demonstration

Midwest  
4600 N



Brad Jacobs  
Health Aide Selleck 6200



Lou Ann Zacek  
Daily Nebraskan



Matt Wallace  
President ASUN

The purpose of the A  
TION program will be  
of drinking and driving  
tured) have been chose  
in a designed driving o  
sober and then after dr

Lancaster County Sheriff's Office  
Lincoln Police Dept.  
Nebraska Dept. of Highway Safety  
University Health Center

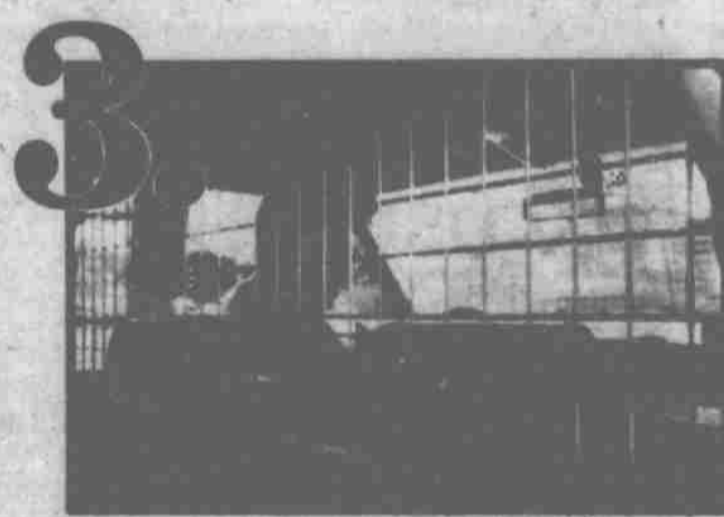
FREE O



**1.** A police officer can pull you over on suspicion of DWI for any driving irregularity: swerving, driving too slow or too fast, straddling a lane marker or taking a turn too wide. New guidelines facilitate DWI checks on a wide range of visual cues. Statistics indicate that the officer is justified in pulling you over better than half the time.



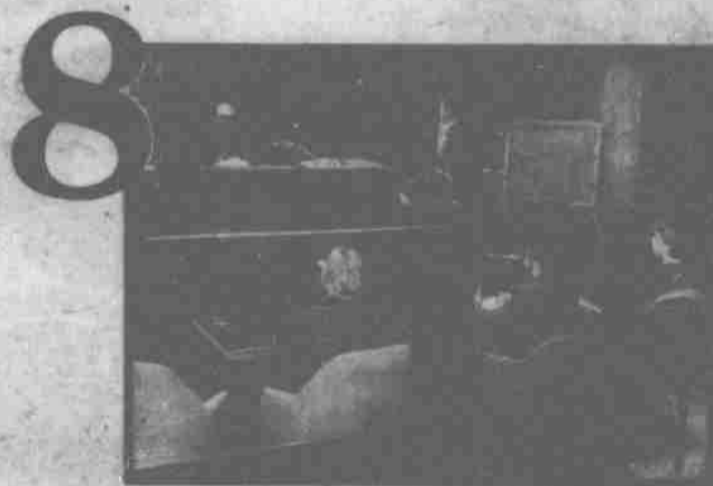
**2.** Once you've been pulled over, the officer checks your license and plates for prior offenses or outstanding violations.



**3.** At this point you are asked to give a preliminary breath sample in the cruiser called a field test. Failure to cooperate makes you automatically guilty of a misdemeanor.



**7.** The process begins at your arraignment where DWI charges against you are read and you are informed of the possible penalties if you are found guilty. You then enter a plea of guilty or not-guilty. If an evaluation of your financial status proves you are unable to afford legal counsel the court will appoint counsel for you. Your trial date is then set.



**8.** If you are convicted of DWI at your trial, you have the right to ask the court to consider you a candidate for probation, or the court can order you to be considered so. This is no guarantee for probation, but only a pre-sentence evaluation of you by probation officers.



**9.** The pre-sentence investigation lasts up to four weeks. You are given tests to help determine your alcoholic tendencies. Probation officers also contact your family and friends, they check into your education and employment backgrounds, your past police record — anywhere they can receive input about you. Their findings are recorded and sent to the judge for his evaluation and decision.

# DWVI: A TOUGH N