

Geske retires after 32 years, leaves special mark on Sheldon Art Gallery

Every great artist leaves his own special mark on the world, and Norman Geske, director of Sheldon Memorial Art Gallery, is certainly no exception.

In the words of Jon Nelson, curator of NU's Great Plains Art Collection and past assistant director of Sheldon, Geske "is responsible for the growth of this institution. He was instrumental in the raising of money to improve the collections and educational programs here. His work has been dynamic at the Sheldon."

Geske, who has been involved with NU's art collections since 1950, is in his last year as director of the gallery, as he has announced he will retire at the end of 1982.

Sheldon is the crowning achievement of Geske's work here at UNL, he said, and is one of the country's most widely admired museums.

"It can't be matched in terms of quality. It is one of the most lavishly designed and decorated college galleries - we didn't have to use any restraint in designing and building it," he said.

Geske said he has no regrets about his term as director of NU's art galleries; particularly since the opening of Sheldon in 1963.

"I have had a great opportunity to build a collection of 20th century American art here. The university is very fortunate not only because it gives money directly to this institution, but because it also has strong local support. That situation isn't duplicated in many, if any, other state schools," Geske said.

Building from a small nucleus of works from the early 1900s, Geske has endeavored to find important works from every major American artist of this century, he said.

"We have tried to create in-depth collections, with more than one medium and more than one period from an artist's life.

The result is that Sheldon has an outstanding assortment of a variety of modern mediums, including paintings, sculptures and photographs, virtually all from the 20th century, according to Geske.

Following up on his conviction that once the arts are made available to people they will respond to them,

Geske said he has worked to make people aware of Sheldon.

"The consumption of art rises out of a need for it. Once you are exposed, it becomes a permanent part of life. If youngsters grow up with art, they don't lose the taste for it," he said.

He also said people are more responsive to art these days.

"There is a much greater audience now, but you can't force people into liking it. There are some who will never appreciate art," Geske said.

Geske said Sheldon's film series have been perhaps its most successful programs.

"Film is the dominant art form of the time. We have tried to make a large variety of film available, regardless of the subject matter. Some of them have been very controversial, but we have always given people fair warning that they might not like such films," he said.

Geske added that he also has worked to make Sheldon as useful as possible to everyone.

"I see the Sheldon Gallery as a valuable asset to all students at the university, from every school, from every department. It also has a strong link with the city of Lincoln itself," he said.

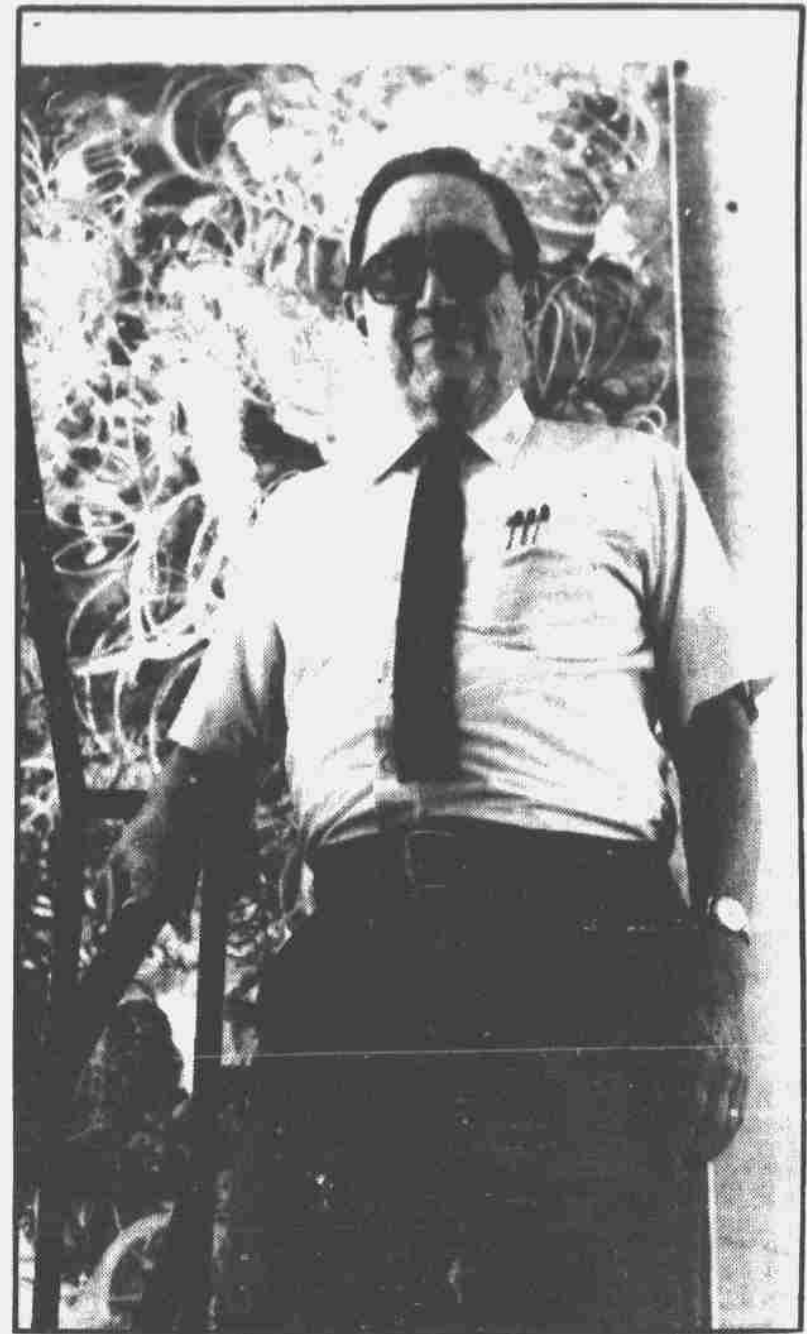
According to Geske, Chancellor Martin Massengale has appointed a committee to choose a replacement for the directorial opening, although no selection has been made yet.

Geske plans to keep up with the work he started at UNL some 32 years ago.

"I intend to remain interested in what goes on here. I want to stay involved as a private citizen," he said. "This is an exceptional building, and we have an extraordinary collection. What we have is the best."

As is the case with many of the greatest artists and their works, a full appreciation of them comes only after the passage of time, according to Nelson.

"Students take for granted what's here. People will come back after they graduate and say 'What a wonderful museum this is.' Even though they may not realize it now, they will achieve an awareness of it in time," Nelson said.



Staff Photo by Jane Knapp
Norman Geske

Thefts and assaults reported to police

The following is a list of the calls and complaints received by UNL police in the 24-hour period from 7 a.m. Wednesday to 7 a.m. Thursday.

9:34 a.m. - A parking permit was stolen from a vehicle in parking area 31.

11:48 a.m. - A calculator was reported stolen from the Nebraska Union.

1:25 p.m. - A medical emergency (an ankle injury) was reported in Nebraska Hall.

2:46 p.m. - A theft from the State Historical Society was reported.

4:20 p.m. - A third-degree sexual assault was reported in Oldfather Hall. No force was used.

4:25 p.m. - A second-degree sexual assault was reported belatedly in a related case.

4:30 p.m. - A female reported being disturbed by a male at Oldfather, also related.

5:40 p.m. - The tires were deflated on a vehicle in parking area 1.

6:42 p.m. - A disturbance was reported at Abel Hall.

9:06 p.m. - A complaint of marijuana odor was reported at Abel Hall. No arrests were made.

9:56 p.m. - A bicycle was reported stolen east of Ferguson Hall.

12:06 a.m. - A disturbance was reported east of Burnett Hall. Suspects were gone on arrival.

12:09 a.m. - A complaint was made of an intoxicated party at 17th and W streets. No arrests were made.

12:21 a.m. - A bicycle was reported stolen from Harper Hall's courtyard.

3:31 a.m. - A disturbance was reported at Sandoz Hall. No arrests were made.

3:40 a.m. - A disturbance was reported at Burr Hall on East Campus. Fireworks were involved.

4:28 a.m. - A burglary was reported at the Foundation Seed Division. Damage was reported but nothing was stolen.

4:52 a.m. - A disturbance was reported at Abel Hall.

Roommate pacts ease problems

An easy way to prevent roommate problems is to agree on a few things in advance. Shelley Stall, attorney and director of ASUN Student Legal Services, said the best way to have that agreement is on papers.

"It's much easier to prove what an agreement is when it is in writing," Stall said.

Students may obtain free roommate contracts through Student Legal Services. The contracts are geared to apartment residents and carry legal force.

Stall explained that a roommate contract is a type of subcontract. Roommates would have a contract with each other in addition to the contract with their landlord.

The basic contract provides for any division of payments desired for damage deposits, utilities, rent, transportation and food.

The length of time the lease applies to each roommate is defined, along with agreed procedures to follow if a roommate moves before the contract has expired.

One-fourth of the monthly cases at Student Legal Services are roommate disputes, Stall said. The most common problem in the cases, she said, is when roommates find out they are not compatible and one moves out, leaving the others to pay a larger amount of rent.

"Whether you think you know someone or not, you need to sit down and discuss each other's habits - how you both feel about parties or study time. Some people need a quiet time to study," Stall said.

Stall offered some tips for people thinking about becoming roommates. First, she said, agree on how much you can spend on rent. Then, determine what monthly expenses will be. It is important, Stall said, to know how much utility payments will be before moving in anywhere.

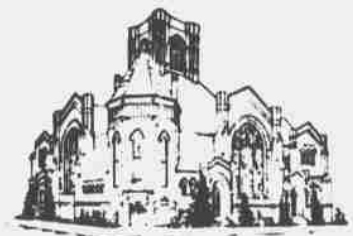
Roommates should agree ahead of time to delegate responsibilities, Stall said. It is always good, she said, to have decided in advance who will write out checks at what time.

Stall has promoted the idea of roommate contracts while speaking to several campus groups. The reaction generally has been positive, she said.

"With a contract, you know you have a responsibility, and it will be taken more seriously when it's a written contract," Stall said.

Interested students should contact the Student Legal Services Center, Nebraska Union 237, for an appointment.

WORSHIP
THIS
SUNDAY
at



St. Paul United Methodist Church

12th and M Streets - Downtown
5 blocks south of campus

WORSHIP at 9:30 and 11 a.m.
"What can we believe about
'Original Sin'?"

Dr. Rex C. Bevins, preaching

2 For 1

Single Dip Ice Cream Cone
(after 6pm with this coupon)

UNL EAST CAMPUS DAIRY STORE

Mon. - Sat. 10am - 10pm
Sun. 1pm - 10pm

Offer Valid Thru Sept. 30, 1982

SAVE 35%* off the newsstand rate
by subscribing to
The Lincoln Star, Lincoln Journal or
Sunday Journal & Star

Stop by this week at our booth in the
City Campus Union to take advantage
of this special offer and support the
Student "Y" too.

Subscribe for the full school year and receive a U. of Nebr. Sun Visor!

MING PALACE
Restaurant
明宮
1309 L STREET
OPEN LABOR DAY AT 5PM