

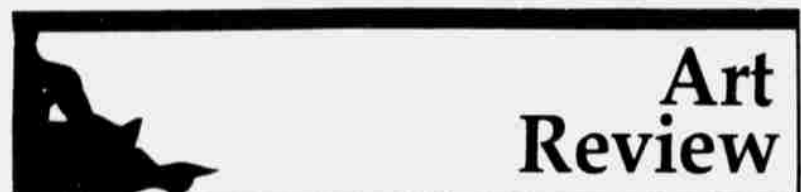
Arts & Entertainment

Eppens' landscapes go beyond provincial label

By David Thompson

Exhibitions like the 20 paintings by Lincoln native Glen Eppens on display at the Sheldon Memorial Art Gallery until Jan. 31 have a limited appeal. This should not, however, prevent us from appreciating the color and style of his work at its best. His evocations of the countryside of Nebraska are a cut above the usual Midwestern landscape artist's work, and as such merit our attention.

The reason paintings like this do not command much attention in the art world is simple. The subjects of the paintings are the hills, trees and buildings of the Midwest and would probably be labeled as provincial by members of the more serious art circles. Thomas Hart Benton



Art Review

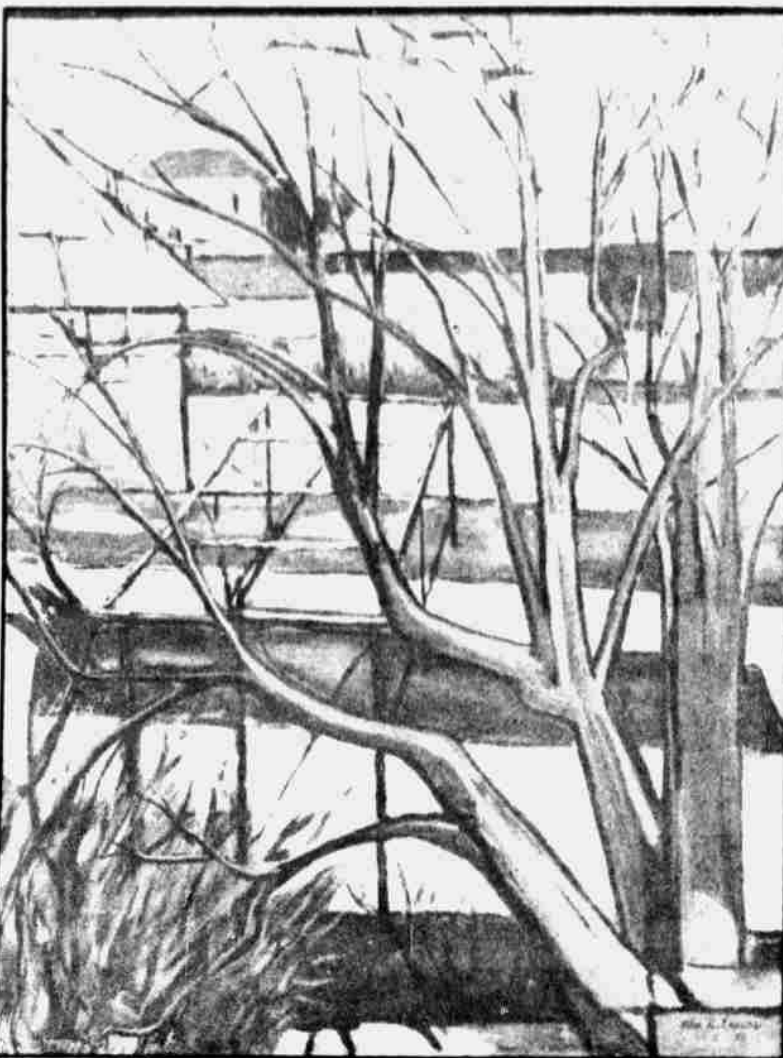
fought for years against the label of "hick art" being applied to his work, and Eppens must struggle against this same sort of label. Sometimes, in the painting "Winter Comes to Deadman's Run" for instance, the label is merited. It is difficult to put a ditch on a canvas and expect it to arouse any feeling in the viewer. The diagonal gash of brown that is the center of the painting is lifeless. The same can be said of "Denton Road." Aside from a few playful splashes of pink on the road and grass and the dark rumbling of trees in the background, the painting is without flair, like the plastic landscapes in train sets.

Interesting dirt

This is not to say that dirt cannot be interesting. In "Farm Abandoned" the plowed field is a river flowing with the somber colors of the earth, while a cluster of buildings huddles on its bank. It is compelling to contemplate the image, especially here in Lincoln: an island in a

sea of dirt. It is these departures from flat realism that make the exhibition worthwhile.

For a landscape painting to be artistic rather than purely technical, it should not be photographic. In a painting



Glen Eppens' "Winter Prisons," one of twenty Eppens paintings currently on display at Sheldon Art Gallery.

there should be something conveyed that cannot be felt by simply looking at a picture of, say, a tree or a field. Eppens succeeds at this in some paintings and fails in others. In "Scenic Drive Weeping Water" the trees and sky are given spark and vivacity, while in "Spring Along the Missouri" they lie there, inviting the viewer to see nothing.

Eppens also cannot seem to settle on any particular style when it comes to his paintings of buildings. In "Long Branch Bar and Cafe" the building is straight and crisp, albeit a little awry in its perspective.

Next to it hangs "Taos Adobe," a warm little painting of a tumbleweed building. In it the edges are blurred, the trees curving about, the color taking command rather than the angles.

Trees best subject

The trees make their way into other paintings, and are perhaps Eppens' best subject. In "Misty Morning," for example, the viewer stands a short distance away from a tranquil stand of trees reminiscent of three paintings by other artists like Monet. In "Trees," the subjects are stripped of their leaves and forced to stand naked, filling the top of the painting with a lace of branches and stirring the air almost to the beginnings of a Van Goghian frenzy.

In "Winter Prisons" the space is filled with shapes, slices of air and road and building cut by the branches of the tree.

These tree paintings are Eppens' best work, along with landscapes like the impressionistic "Cripple Creek Gold" and the painting "Spanish Peaks," with its mountains marked with juts of color much like Cezanne painted his mountains.

Paintings like these prove that here, in the midst of this sea of dirt, landscape painting can reach beyond the provincial by giving the world around us movement, color, life.

Classified 472-1761

CALL 472-1761
\$2.50 minimum charge per day on commercial ads. Ten words included.
\$1.50 minimum charge per day on individual student and student organization ads.

for sale

Caber ski boots (9 1/2 M). Look 182 bindings, used once - \$125. Call 483-4875.

1 pr. Altec Model 14. Call 472-9928.

FRESH CIGARS
CLIFF'S SMOKE SHOP
12th & "O" Street
476-0119

TI 58 Programmable calculator, Schwinn 12-speed super Le Tour. 477-6789.

Yamaha Receiver, bic Turntable, Genisic II speakers, Marantz cassette deck. 477-6789.

LPD Notice of Unclaimed Bicycles and Miscellaneous Items Jan. 23 at 10 a.m. at 410 West "P" Street.

1976 Mustang II 4-cyl., automatic, air, power, Cassette, 477-6789.

Repossessed 1980 Pontiac Firebird-Trans Am. Black, t-tilt steering wheel, cruise control, AM/FM stereo radio, air conditioning, power steering, power brakes, power windows, rear window defroster. 11,000 miles. Call 471-1510 8-5 p.m., Monday - Friday.

Repossessed 1981 Toyota Celica 2-Door coupe. Air conditioning, AM/FM stereo radio, 8,000 miles. 471-1510 8-5 p.m., Monday - Friday.

Repossessed 1979 International Scout Midnight Star, 4-Wheel Drive pick-up. Air conditioning, AM/FM stereo radio, roll bar. 36,000 miles. Call 471-1510 8-5 p.m., Monday - Friday.

Plaid Cloth-covered sofa. Excellent condition. Call 475-3081 after 6 p.m.

Pioneer CTF700 tape deck. Retailed \$425, asking \$225 or offer. Information, call 472-9632.

BOLIVAR SPEAKERS \$100
Pr. G.E. Portable color T.V., excellent dorm item, \$50. 477-5964.

Compact refrigerators for sale. 4.0 cu. ft. \$62.40, 2.0 cu. ft. \$41.60 (Tax incl.) Call 476-2501.

Pioneer RT 707 reel-to-reel. Excellent condition. Call after 9 p.m. 472-0150.

Hewlett Packard accessories software 67/97 + HP 41C. Must sell, 1/2 off new price. Call 476-0472 after 4 p.m.

help wanted

Need 4 people by next Saturday, must be 18, have car, be sports-minded: \$800 full-time, \$350 part-time. Leave name and number, 483-6047. West Bend Products.

Summer Vacation Job Opportunity. Share your knowledge of Nebraska with visitors to our state by becoming a Nebraska Vacation Guide.
-Challenging
-Fun
-Good Learning Experience
For more information call Cindy Kaliff, Department of Economic Development, Travel and Tourism Division, 402-471-3798.

EARN MONEY FOR SPRING BREAK
Temporary part-time receptionist needed Feb. 8 through March 19 to take telephone calls, classified ads, and type. Hours are 11-2 MWF and 8-2 Thursday with additional hours as required a possibility. All applicants must be able to type 50 w.p.m. Job MAY extend beyond March 19. Apply at the Daily Nebraskan, Room 34, Nebraska Union by Jan. 29.

for rent

Semester parking available on campus. For more information, call 474-9955.

EAST CAMPUS:
2 bedroom duplex available Feb. 1. \$215 + gas & light. No pets. 483-6024, 1417 Idylwild.

COUNTY SHIRE
Large, one bedroom apt., fully carpeted, heat paid, swimming pool, 10 min. from campus.
Available immediately 464-0741

Help for middle income family/couple. 2 bedroom apartment. Rent as low as \$186. Family must have a monthly income of at least \$500, yearly not to exceed \$13,800 - 3 people \$15,550. 3 minutes north of City Campus. 475-6144

One bedroom, two bedroom apartments, houses and townhouses
TOWN & COUNTRY REALTY
Ron Hinkley
489-7888

3 bedroom townhouse. 1 1/2 bathroom, 3 minutes north of City Campus. \$318 monthly lease. 475-6144.

GRAB A PARTNER
Two can live for the price of one, brand new 6-plex, large deluxe two bedroom apartments, carpet, drapes, appliances, A/C, 5 blocks from campus, \$290 per month. Labella Enterprises 474-4551

Scenic large 1 bedroom apartment, overlooking swimming pool. Close to both campuses. All appliances, parking and laundry facilities. Heat paid. Call 475-0445.

CLOSE TO CAMPUS
Nice 1 and 2 bedroom apartments, heat paid, all appliances, laundry facilities, off street parking. 477-3889.

1 bedroom apt. 5630 Huntington \$175 + elec. Available Feb. 1 Prestige Properties. 474-2531.

BROWN PALACE COOPERATIVE, \$165. PER MONTH, SINGLE ROOMS, HEARTY MEALS, 5 MINUTES FROM CAMPUS, 1 HOUR FROM OMAHA, 6 HOURS FROM EUROPE. 476-2583.

3-4 bedroom house, vicinity 27th & Sumner. Dishwasher, central air. Available now. \$395 + utilities. 474-2531.

Do you have inflation fever? Give us a try. \$175/month - room and board. Furnished room with ind. heat/R.C. Just block from UNL City Campus. On city bus routes. TV room, ping pong, laundry facilities, parking lot, university approved coed housing. Call 474-9772 for Theodore Johnson or any house officer.

Partially furnished, 5 blocks to City Campus, 4 bedrooms. \$275.
475-6669

FRENCH QUARTER
Roomy 1 and 2 bedroom apartments in East Campus area. Modern complex, laundry, off-street parking. No children or pets. \$245-\$257. 4645 Dudley. 464-4751.

wanted

We buy or sell anything new or used. Top dollar paid for quality merchandise. Open noon to 9 p.m. daily.

Leon's Preferred Shop
2147 No. 27th
475-2809

MATH TUTOR WANTED
\$6.50 PER HOUR
CALL 435-1015

announcements

Gay Student Group, Thursday, 228 Andrews, 8 p.m.

LAWLOR'S
X-Country Clinic Next Sunday 1 p.m. - Waxing demo in store skiing techniques at Pioneers Park. Some rentals available. Sign up thru Sat. 1 Lawlor's Downtown 1148 "O" St.

Kim,
I'd like to meet you today at the Union after our Chemistry class. We could have a couple of taco salads and talk awhile. See you then!
Alan

ALL STUDENTS interested in showing their RESPECT FOR LIFE meet at the Union, Broyhill Fountain side to march to the Federal Building 9:30 Sat. Jan. 23rd.

★
PHI CHI THETA
TODAY!
3:30 - CBA 119

Get involved in bringing speakers to campus. Join UPC's Talks and Topics Committee by attending a meeting on Thurs., Jan. 21 at 6:30 p.m. in the Union. Room number to be posted. Everyone welcome. Questions, call 472-2454.

Men and Women -
This may be your last chance to find out what a woman really looks for in a man. Tonight, COLLEGE LIFE, Love Memorial Hall, 7 p.m. Be there, aloha.

Hey Darcy,
The gang at Chi Alpha is meeting Friday at 7 p.m. in the Union. Wanna go?
Steve

SET YOUR OWN SCHEDULE with UNL independent study. Call Molly Cunningham, Continuing Studies, 472-1392.

Classes now forming in Country Swing, 2-Step, Social, Ballroom and Aerobic Dance. 15% off with each student I.D.
THE DANCE EMPORIUM
488-4581

All human life is worth living Respect Life!

Now it's more convenient to fit a quick, hot meal into your busy schedule. Stop by the Union Square for lunch or dinner and enjoy a delicious cheeseburger.

The Magazine wants poetry, photographs, short fiction and art work. Deadline for submission if Feb. 15. Turn them in at 142 Andrews. For questions, call 472-6357.

This is it. Applications for Innocents Society available Jan. 25 at Innocents Office, Room 236 in City Union, ASUN Office, and East Campus Dean's Office.

Arts and Sciences students should consider nominating outstanding faculty members for distinguished teaching awards. Nominating details available in 1223 Oldfather Hall - deadline February 1.

Don't skip lunch just because your schedule is busy. Stop by the Union Square and have a taco salad or choose from a variety of foods. The Union Square is close and convenient. Try us today!

PARTY WITH WHISKY RIVER AT THE EAST UNION, Jan. 22, 9-1. Sponsored by UNL Rodeo Club.

★ READ THIS ★
If you'd like involvement, activities, respect in Agriculture and still have a good time doing it, UNL Block and Bricle is the club for you! Come join the largest club on both campuses. East Union, 6 p.m. Thursday evening. Be there!

A.M.S.
Very Important Meeting All Officers, Chairpeople 1 p.m. at Chesterfields in Gunny's BE THERE! (or call Mark Ford)

★
COULD YOU BE SUED??
Campus Activities and Programs is sponsoring a workshop on "Liability, Insurance and Student Responsibilities in Organization Activities" Thursday, Jan. 21, 2:30 to 4 p.m. in the Union. A panel of UNL liability experts, including John Wiltse, a lawyer for the University, will provide information on liability in areas such as alcohol, event registration, insurance and vehicle use. All organization advisers and leaders are invited, and time will be allotted for questions. This could help keep you out of trouble!