

# Money issues to occupy regents' time Saturday

By D. Eric Kircher

The ASUN president will introduce for vote at the Saturday NU Board of Regents meeting a resolution calling for continued student financial aid from the federal government.

The resolution is to be part of the National Student Action Day on April 23. Students at UNL will join other students in nation-wide letter-writing campaigns and rallies opposing the Reagan administration's proposed cuts in student financial aid.

The regents will receive a report on student financial aid at NU from Academic Affairs.

"We want to have the regents joining together in the fight against the cuts," said ASUN President Rick Mockler.

The regents also will receive reports from the vice chancellor of academic affairs on minimum class sizes for each campus. The five-year plan calls for the NU

campuses to establish the standards for such limits and for cancelling classes for lack of students after the classes have met.

The reports are informational, and the regents won't act on the reports at Saturday's meeting.

### Approval of Massengale

NU President Ronald Roskens has recommended that the regents approve his appointment of Martin Massengale as UNL chancellor. Massengale is the Institute of Agriculture and Natural Resources vice chancellor.

If approved, the appointment would become effective June 1. Massengale's annual salary would be \$65,000. He currently earns \$55,200.

The regents' business affairs subcommittee has recommended approval of the 1981-82 Fund B allocations to the University Program and Facilities Fees.

The \$96,123 increase would increase the Fund B portion of student fees by \$1.84 a semester, according to the subcommittee report. This year, \$69.17 of the total \$72.50 paid by each student in fees goes to Fund B.

Proposed total Fund A and B student fees for 1981-82 is \$75.50. The proposed Fund A allocation is \$4.49.

### Percentage increases

The individual programs covered and their approxi-

mate percentage increases over 1980-81 are:

- University Health Center, 6.8 percent.
- Recreation Department, 16.1 percent
- Contingency Fund, 308.7 percent.

The amount allocated to the Nebraska Unions would be cut 4.8 percent and the amount to the debt service would be unchanged.

The Nebraska Unions, for the first time, will receive about \$32,000 rent from the University Bookstore for 1981-82. The amount cut from student fees is \$28,450.

The contingency fund is adjusted to make fees come to an even amount. The chancellor—or whoever he designates—must approve any expenditures from the fund.

The subcommittee has also recommended approval of a supplement to contract to Iowa State University for training Nebraska students in veterinary medicine.

Acting Administration Vice President Alan Seagren has signed the supplement to the contract—which would allow 24 Nebraskans to attend the vet school, instead of 16. The regents still must approve the supplement. ISU had asked for an immediate answer on March 20.

The additional students would cost NU \$204,800 more. The contract now costs \$744,200 to train the 16 Nebraska students.

## Five-year plan draft to be released

9:30 a.m. in the Nebraska Union and 3:30 p.m. in the East Union. The final set of hearings will be Thursday at 9:30 a.m. and 3:30 p.m. in the Nebraska Union. The 3:30 p.m. Thursday hearing has been designated as the one which will concentrate on student reactions.

Kaup said students can attend any of the hearings, but Academic Planning Committee members will be most able to direct questions to students at the Thursday afternoon hearing.

Each campus must develop a five-year plan because of an NU Board of Regents mandate.

The draft is a compilation of five-year plans submitted by each UNL college and non-academic unit, such as the budget and finance departments.

The draft was written by the chancellor's central planning group, which includes the chancellor, the four vice chancellors and the director of institutional research, Kaup said.

The hearings have been delayed for two weeks because of the change in administration, Kaup said. When Martin Massengale was named chancellor in March, he asked to delay the work done by Interim Chancellor Robert Rutford so Massengale could have input, Kaup said.

Because the end of the semester is near, the hearings were scheduled for next week in order to insure student and faculty input, Kaup said.

The final UNL Five-Year Plan will be written by the chancellor's office later this summer or early fall, Kaup said, using comments and criticisms gleaned from the hearings.

The UNL Academic Planning Committee will sponsor a series of public hearings beginning Monday to solicit comments about the draft of the UNL Five-Year Plan, which will be released Monday.

Scott Kaup, ASUN representative on the Academic Planning Committee, said the draft is being printed and will be released Monday afternoon.

Interested parties can pick up copies of the draft in the ASUN office, Kaup said.

The first hearing will be Monday at 3:30 p.m. in the Nebraska Union. Other hearings will be Tuesday at

## UNL student named scholarship nominee

Rebecca Cast, a UNL freshman majoring in business education, has been chosen by the University of Nebraska Office Personnel Association as its nominee for a \$500 national scholarship.

Cast, 42, is competing for the Marian T. Wood 1981-82 academic scholarship. UNOPA already has presented her with a \$100 award.

Cast, who is married and has three children, said, "I think it's quite an honor to be selected."

"It shows that just because you're an adult student it doesn't mean there aren't scholarships available," she said.

Her son, Matt, 20, is a junior geography major attending UNL.

### Correction

In Thursday's Daily Nebraskan, it was incorrectly reported that "Teacher Selection Day" will be this Saturday. The correct date of the event is May 2.

**Did You Know...  
80,000 Nebraskans ARE  
DIABETIC?**



**PLEASE GIVE!**  
American Diabetes Assn.  
Nebraska Affiliate  
7777 Pacific Suite 216  
Omaha, Nebraska 68114



**"Today's The Final Day"**

All bicycles including Austro-Diamier & Puch at 1980 prices.  
Huge inventory to choose from.

**DOWNTOWN**

427 So. 13th St.

(6 blocks south of Love Library)

**EAST PARK PLAZA**

208 No. 66th St.



**What Makes  
Grandmother's So  
Unique? It Could Be...**

**Delicious,  
home-cooked meals...**

Grandmother's serves everything from burgers to crab, soups, salads, and wonderful munchies.

**The bar...**

Grandmother's bar serves almost every drink imaginable, even a special drink for every season.

**The price...**

Get home-cooked food and great drinks without putting a big dent in your wallet.

**The atmosphere...**

Grandmother's decor is uniquely old-fashioned, with an antique bar, stained glass, Tiffany lamps and all the "little things" that create "Grandmother's" mood.

**Or Grandmother's  
special touch...**

Put all these things together, then you'll know what makes Grandmother's so special.



Lincoln

Omaha  
Ralston

### THE PET CONNECTION

Now Selling

## REPTILES

- Black Rat Snakes 4'5' **\$9<sup>99</sup>**
- Yellow Rat Snakes 5' **\$19<sup>99</sup>**
- Texas Rat Snakes 6' **\$9<sup>99</sup>**
- Spilloites pullatus 6' **\$89<sup>00</sup>**
- Red Tail Boa 6" **\$149<sup>00</sup>**

plus others!

### SPECIAL

Mice **65¢** each  
Reg. 75¢

Guinea Pigs

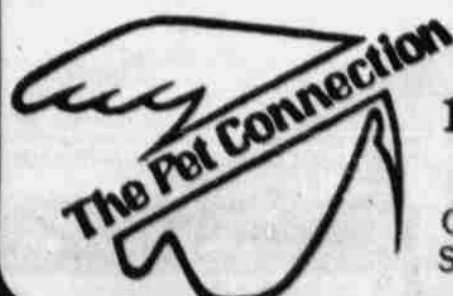
Short Hair **\$5<sup>50</sup>** each

Long Hair **\$6<sup>50</sup>** each

### COCKATOOS NOW IN!

Moluccan, Sulphurs,  
Umbrellas, Citrons

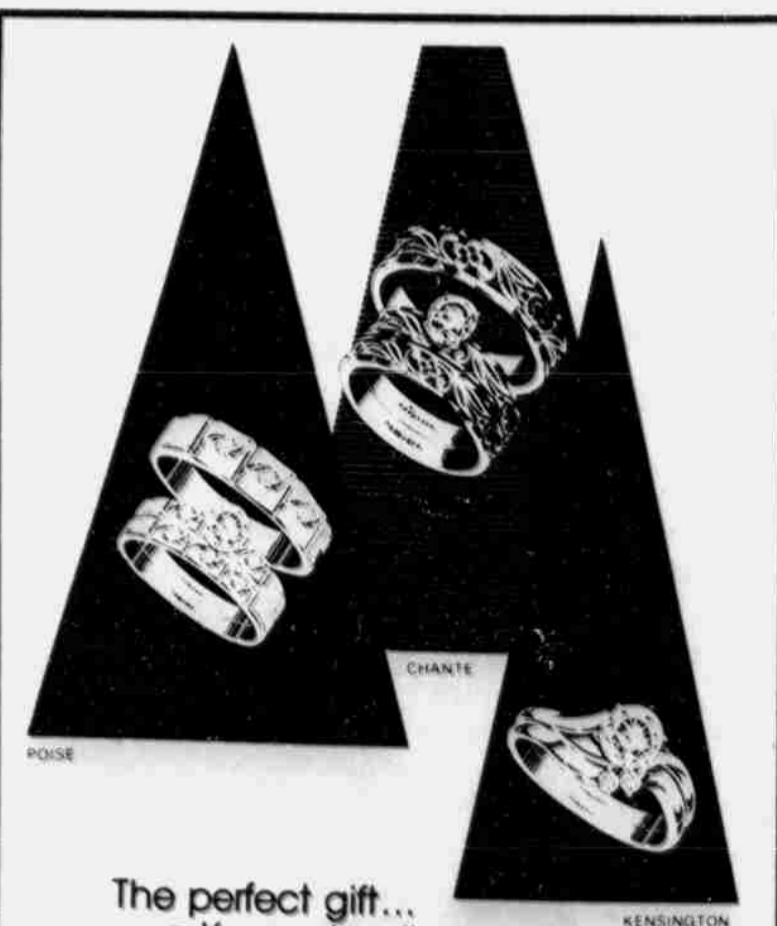
Most are breeding pairs



1711 Van Dorn

423-2431

OPEN: Mon.-Fri. 10-8;  
Sat. 10-6; Sunday 12-6



The perfect gift...  
a Keepsake diamond

Chosen once... cherished forever...  
guaranteed for perfect clarity... precise cut...  
fine white color. You  
can choose no finer  
diamond ring.

**Keepsake**  
Registered Diamond Rings

**A.T. Thomas Jewelers**

The Atrium  
1200 N. St.

East Park  
Plaza

Mon.-Sat. 10:00 a.m.-5:30 p.m.  
Thurs. 10:00 a.m.-9:00 p.m.  
475-9115

Mon.-Fri. 10:00 a.m.-9:00 p.m.  
Sat. 10:00 a.m.-6:00 p.m.  
Sun. Noon-5:00 p.m.  
467-5402