

RECEPTIONIST/ COMMUNICATIONS SPECIALIST

- DO YOU HAVE AN URGE TO COORDINATE THINGS AND SEE THINGS "CLICK"?
- WOULD YOU LIKE THE OPPORTUNITY TO TALK TO AND GET TO KNOW OUTSTANDING PEOPLE FROM ALL OVER THE COUNTRY?
- DO YOU TAKE PRIDE IN KNOWING YOU ARE HELPING "MAKE THINGS HAPPEN"?
- DO YOU LIKE AN INTENSE, FAST MOVING PACE?
- DO YOU LIKE A JOB WHERE YOU KNOW WHAT YOU ARE DOING MAKES A DIFFERENCE?
- A TREMENDOUS OPPORTUNITY TO ASSOCIATE WITH A QUALITY CONSULTING FIRM AND A CHANCE TO INTERACT WITH TALENTED PEOPLE.

CALL: Dr. James A. Sorensen or Connie Rath
PHONE: (402) 489-0351 Wednesday through Friday
8:00 A.M. - 5:30 P.M.

SELECTION, RESEARCH, INC.
LINCOLN NEBRASKA
2546 SOUTH 48TH STREET

Campus Red Cross

Blood Drive

Abel North Lounge
10-4 pm

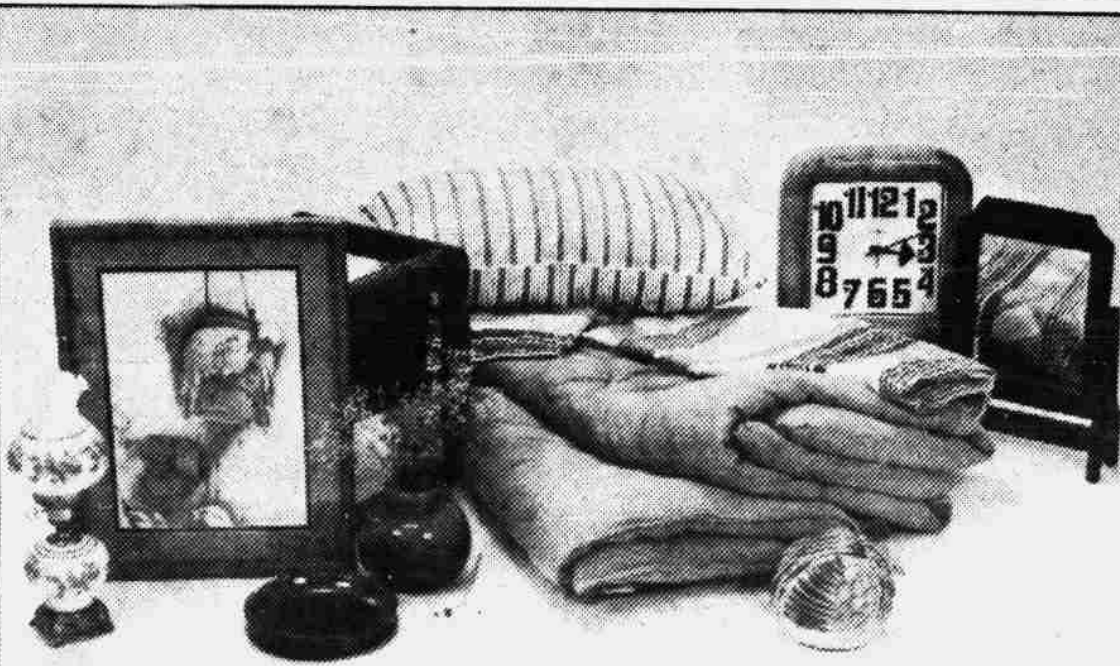
TODAY

LET'S
GO BIG RED

give "real red"

volunteers also needed

for information contact American Red Cross 432-5581



DREAMY GIFT IDEAS FROM LAND AND SKY

This holiday season, put a little imagination into your gift-giving with some bedtime treats from Land and Sky.

Yes, we've got them — from complete flotation sleep systems, right on down to bedding. Dreamy gift ideas that'll work with any budget.

If you're tired of giving the ordinary-everyday-kind-of-gifts, maybe it's time for some dreamy-every-night-kind-of-gifts from Land and Sky.



land and sky



Lincoln Center 1325 "O" Street 475-7778
Lincoln East Cotner & "O" Streets 488-8997
Open weekdays 10 a.m. to 9 p.m. and weekends 10 a.m. to 5 p.m. till Christmas.

United Way local campaign falls short of proposed goal

By Bob Lannin

The United Way of Lincoln and Lancaster County is behind this year in its campaign drive.

According to Larry Milliken, campaign associate and communications director, United Way has raised \$1,752,597.47 in 1978, which is 94.6 percent of its \$1,853,500 goal.

Milliken said this year's goal is an 8.2 percent increase over last year's total, and by the year's end United Way will show about a five percent increase over last year's total amount raised.

The reason for not reaching its goal was difficult to explain, Milliken said, but it was probably due to the state of the economy.

Money raised through United Way goes to 24 local agencies in Lincoln and Lancaster County, Milliken said. These agencies are grouped into four classifications: individual and family services, health and rehabilitation services, emergency, community and educational services, and youth development and adult enrichment.

Share funds

Milliken said some of these agencies receive all of their funding through United Way, while most others receive local, state and federal funding as well.

United Way receives all its funds through contributions from places of employment with no door-to-door soli-

citation. Milliken said United Way gets employee groups together and shows them a locally produced film on the agency.

United Way is composed of four divisions, Milliken said. The campaign division is in charge of the fund-raising United Way does.

The planning division, composed of 30 members, provides an ongoing evaluation of the agencies United Way funds. It also surveys the needs of the community to decide what programs will meet these needs, Milliken said.

Distributing decisions

The 45-member allocations division is responsible for deciding how the money raised should be distributed among the 24 agencies. The allocations division also decides, along with the campaign division, how much money they think can be raised in the upcoming year.

The volunteer bureau, according to Milliken, watches over the placement of volunteers in human service agencies financed by United Way.

Milliken said that local divisions of the United Way operate on their own. The national United Way organization is used for consultation and supplies publications.

United Way was founded in Lincoln in 1923 as the Community Chest. The agency has gone through many name changes throughout its history, Milliken said.

In May 1976 the name United Way was adopted because it was easily recognizable on a national level.

Committee discusses guidelines

The Committee for Fees Allocation, formerly the Fees Allocation Board spent Tuesday night's meeting reorganizing and setting up new guidelines.

The FAB was disbanded last summer and now approval for student funding must go through ASUN before being submitted to the vice chancellor for student affairs and finally to the Regents.

Although no formal action was taken at the meeting, Chairman Kent Whitacre assigned committee members to audit student organizations. Formerly, student organizations gave reports of their spending to the FAB.

The committee discussed guidelines for conducting their audits, and is keeping those set up by the FAB.

The committee worked on their new

criteria and on developing new bylaws. With minor exceptions, the committee plans to use those criteria and bylaws set up by the old FAB.

A final vote on the guidelines for auditing the new CFA bylaws is expected at a future meeting.

Whitacre presented the deadlines student organizations must meet for funding. The dates include a Dec. 15 deadline for the committee members to have completed their audit, and a Jan. 15 for the organizations to submit their requests for next year's funds.

The CFA will draw up recommendations from those requests and submit it to ASUN. It then goes to the vice chancellor for student affairs and to the Regents for final approval in April.

Red Cross
is counting
on you.



International Contact Lens®

4 Week
Trial For
All Fittings



Softlens
Gas Permeable
Wetflex
Conventional
Bifocals

3200 PROFESSIONAL BUILDING • 3200 O STREET

475-1030

Complete Frame Selection for
Your Eyeglass Needs

