

## Newly created vice chancellor's office will help streamline grant procedures

A former director of the Ross Ice Shelf Project is UNL's first vice chancellor for research and graduate studies.

Robert Rutford was the project director from 1972 to 1975. He became vice chancellor for research and graduate studies last summer.

Rutford was director of the National Science Foundation's Division of Polar Programs between the time he directed the project and became vice chancellor. He has a MA and a PhD from the University of Minnesota.

He said his duties as vice chancellor for research and graduate studies are to coordinate the university's grant proposals.

"This is the first time there has been a designated spokesman within the university to speak for all grant proposals," he said. "Procedurally we don't have a very good program for getting grants at the University of Nebraska."

Rutford said the newly created vice chancellor's office will be used to streamline procedures used in

getting grants. To do this, a manual explaining the best way to get grants has been printed.

Rutford said the manual is an attempt to bring all the information necessary to receive a grant under one roof.

"It's not our intent to centralize the writing of the proposals," he said. "That's best left up to the individuals making the application. They are closer to the project and would know better how to describe it."

Rutford has been chairman of the Geology and Physics Dept. at the University of South Dakota and has coached football and track at Hamline University in St. Paul, Minn.

He was an instructor at St. Catherine's College in St. Paul and has had more than 20 articles published.

He said he does not see his job at UNL as a stepping stone to another job.

"If in three years or so a good job offer comes along," he said, "then hell yes. But I came here in the first place because of the challenge and because I thought it was a good offer."

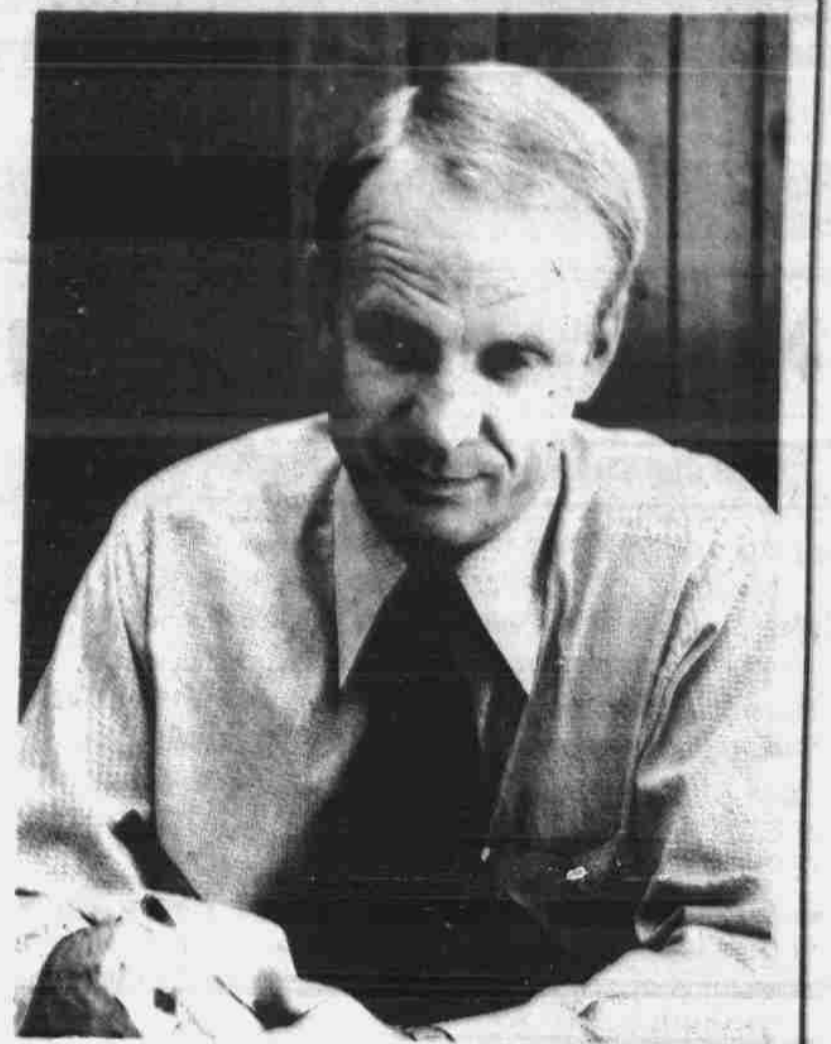


Photo by Tim Ford  
Robert Rutford is the new vice chancellor for research and graduate studies at UNL.

Start the school year smartly in

## CONTACT LENSES...

Let the real you shine through with the natural look of contacts. They're easy to get used to, easy to wear, easy to care for. Get all the facts about contact lenses at our nearest office. Do it today!

**Duling Optical**  
THE EYEWEAR PROFESSIONALS



LINCOLN:

1324 'O' St. — 432-9652  
840 N. 48th St. — 466-1924  
3923 S. 48th St. — 488-3106

## RAVEN

Warm Wear for Cold Weather at Raven's Low Price

Machine Washable Ski Jackets

Raven Price \$41.95

Suggested Retail \$65.00



Polar Guard Insulation  
Lots of Extra Pockets  
Wind Shield  
Zipper Guard

Matching Ski Pants Available Too!

**RAVEN SPORTSWEAR**

Factory Outlet Store

Mon. & Thurs. 10-9

Tues. & Wed. 10-6

12th & Q Fri. & Sat. 10-6 **435-6482**

NOW OPEN SUNDAY 12-5

Announcing the New  
**PLANT SHOP**

1611 'O'

In the Back of Lady Lavender.  
Where the Prices DON'T GROW  
With the Plants!

## HORSEFEATHERS

F.A.C.

30¢ draws 50¢ hi-balls  
\$1.40 pitchers

2:30-5:30

**EVERY FRIDAY**

1228 'P' St.

**\$1.00 Off**

**Any Large Pizza**  
with one or more items



**475-7672**

611 N 27

Limit one coupon per order  
Offer good thru 10-9-77

Introducing original jewelry designs  
created with a special person in mind.

You.

**Christell's** lower mall  
the atrium  
13th & N  
475-5119

Now Open In The Atrium



**KHAT**

Feature Albums  
10 - midnight Friday  
Neil Young  
American Stars and Bars  
Mary McCaslin  
Prairie in the Sky

On Lincoln's  
New Progressive  
Station  
Stereo 106