

Additional landscaping projects planned for East Union, City campus grounds

The landscaping projects completed on both UNL campuses this spring and summer are far from the last for the UNL grounds dept., according to assistant director Jay Thody.

"The landscaping is an ongoing thing with the new building construction on both campuses," Thody said. On East Campus, landscaping around several buildings began this year. Only the Barkley Center project was completed and the landscaping for the new East Union is just beginning, Thody said.

On City Campus, Thody said there has been a revamping of Enright Garden, the area around Mueller Tower. He said his department replanted material and changed grading for improved drainage.

Grading in spots directly over steam tunnels has been necessary to improve the conditions for plant growth. The heat from steam in some places prohibited growth, Thody said.

A flag memorial was begun this spring between the Nebraska Union and Administration Building. So far, the landscape has been redone and Thody said this fall or winter, a set of flags and poles will be placed at that end of the mall, including the U.S., Nebraska and university flags.

Like many projects, this one is funded by private contributions to the NU Foundation for the memorial, he said. Special funds are appropriated through the Department of Business and Finance, Thody said.

The grounds dept. also receives money for its operations. The number of employees in the department ranges from 40 in winter to more than 60 during the summer, Thody said.

Thody also is in charge of project design. He said landscape designs come from the department, but a consulting firm in Houston does comprehensive planning and a few special projects.

In the future, Thody said the area in front of the Coliseum and Memorial Stadium may be made into a memorial park with benches similar to those near the Nebraska Union. His department is trying to promote the project through the NU Foundation.

He said since the use of the Coliseum has decreased after the Sports Complex construction the concrete area in front of the Coliseum may be torn up and replanted.

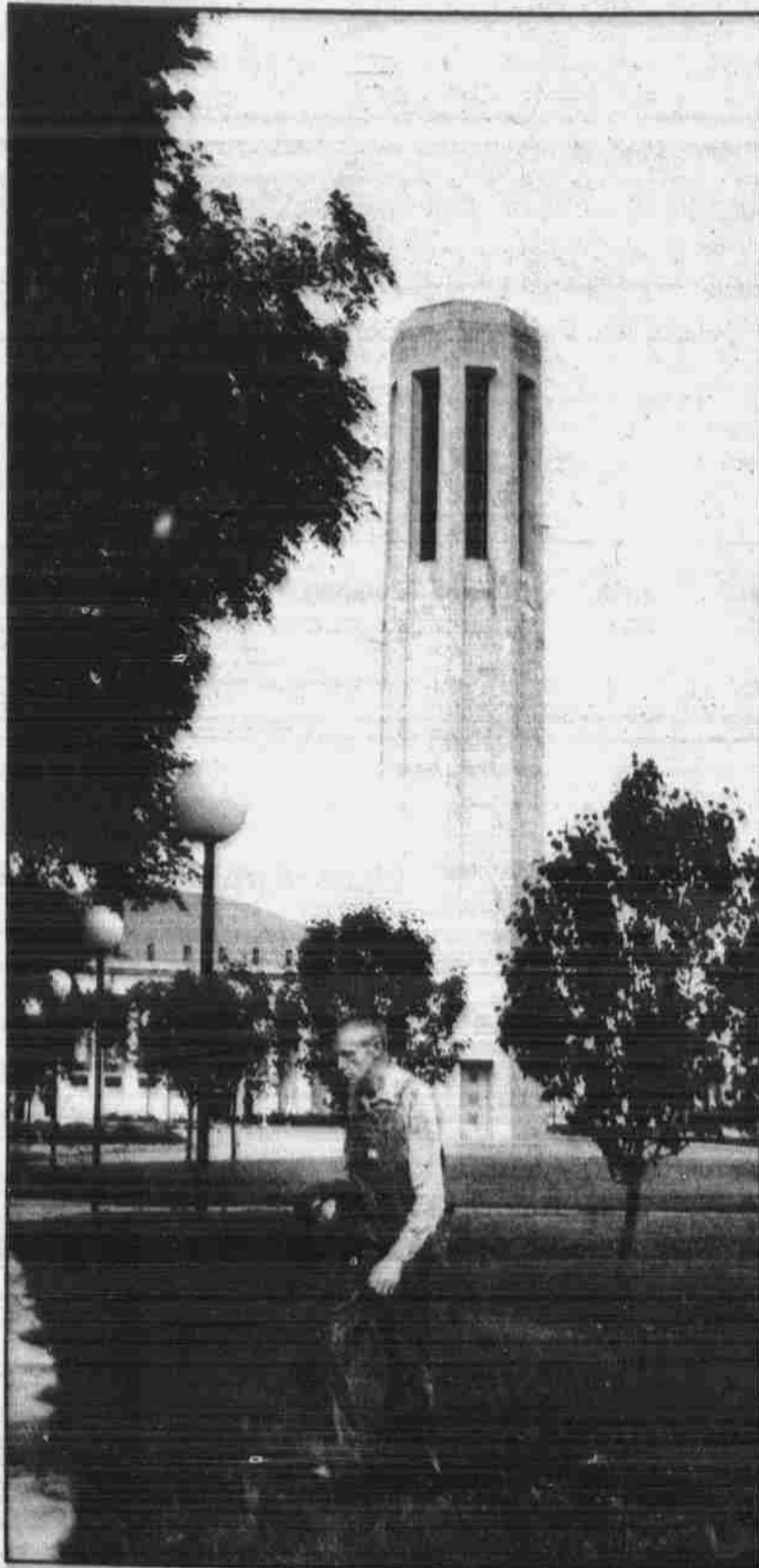


Photo by Mark Billingsley
Grounds keeper Herman Bluhn inspects the area around the clock tower to see if the recent landscaping in showing any signs of wear.

★ THE WATER HOLE F.A.C. ★

30¢ draws \$1.40 pitchers
50¢ hi-balls
2:30-5:30
★ EVERY FRIDAY ★

Start the school year smartly in
CONTACT LENSES...

Let the real you shine through with the natural look of contacts. They're easy to get used to, easy to wear, easy to care for. Get all the facts about contact lenses at our nearest office. Do it today!

Duling Optical
THE EYEWEAR PROFESSIONALS

LINCOLN:

1324 'O' St. — 432-9652
840 N. 48th St. — 466-1924
3923 S. 48th St. — 488-3106


VISTA
is coming
alive again.
How about
coming
alive
with us?

ANSWER TO PREVIOUS PUZZLE

| | | |
|----------|----------|--------|
| SID | ACE | ASP |
| TMAN | LAP | NONCOM |
| UPTO | ERI | OTIOSE |
| FREDERIC | CHOPIN | |
| FOB | STE | TENET |
| MOAT | SCOURS | |
| SPOTOF | ERRS | DPT |
| ATKA | ARSON | DIOR |
| MUS | ANO | ENISLE |
| ATTIRE | ARLO | |
| MESTA | NAP | INA |
| VALSES | MAZURKAS | |
| ASSISI | AMT | CIPI |
| SHASTA | TOE | ANSA |
| YST | ARC | GEN |

Showbiz PRODUCTIONS
"Presenting the Best in Entertainment"

B.J. THOMAS



Sunday October 9
8 PM Pershing Auditorium
Reserved Seats \$7, \$6, \$5
Tickets at regular Outlets

Diamonds...


Your investment
in Love.

Sartor Hamann

REGISTERED JEWELERS AMERICAN GEM SOCIETY

| | | |
|--------------|---------------|---------------|
| Downtown | Gateway | Conestoga |
| 1150 "O" St. | Enclosed Mall | Enclosed Mall |
| Lincoln | Lincoln | Grand Island |

FOR
ADULTS
ONLY



FALSTAFF BEER.

Because we're all in this together.