

Two new coaches to guide oarsmen

There will be two new coaches at the helm when the Nebraska crew takes to the water this fall, head coach Frank Sands said Tuesday.

Ron Korpi, who resigned as University of Minnesota (UM) women's crew coach will coach varsity and freshman women.

Mark Potadle, former UNL Crew captain will coach the freshman team.

Korpi and Potadle replace former UNL assistant Mark Stormberg who is training for international crew competition in Philadelphia, Pa. Stormberg, a natives of Kimball, Neb., was on the U.S. Rowing team this summer.

Korpi rowed with the UM varsity team and coached the Gophers for two years. In 1974, Korpi guided his lightweight women's squad to a national championship and a bronze medal finish in the Canadian National Championships.

Pete Zandbergen, crew publicity manager called Korpi one of the top five women's crew coaches in the nation.

Lot may sit empty

Southeast Community College has a 117-acre lot it does not know what to do with, unless its board of governors approves financing proposed construction on the site, a college official said Tuesday.

Bob Eicher, SECC president, said "we have most of the money now on reserve. If we wait a couple of years we should have enough to go ahead and build the building."

"But I will recommend that we either borrow the money or take out a bond so we can start to build as quickly as possible."

Construction would consolidate all full-time Lincoln programs in one building, he said.

Southeast Community College now uses about eight different buildings in Lincoln for its full-time programs, Eicher said. When the new campus is completed, off campus sites will be used for part-time programs. The Fairbury and Milford campuses still will be used, he said.

The proposed building site has been contested for several years. Area citizens did not want the college located at 84th and O streets because they wanted to preserve the residential identity of the area.

Some city council members had protested the move because it would be constructed in the Stevens Creek watershed, an area originally exempt from expansion.

If construction is completed, it will be the first time SECC has had a centralized location for its educational programs.

The college may have plenty of money now for the construction, but in a couple of years it may not have further tax support, Eicher said.

The college is financed by a one mill levy on the state property tax in southeast Nebraska counties, he said. The school can collect the tax for only two more years unless the Legislature appropriates more money, he said.

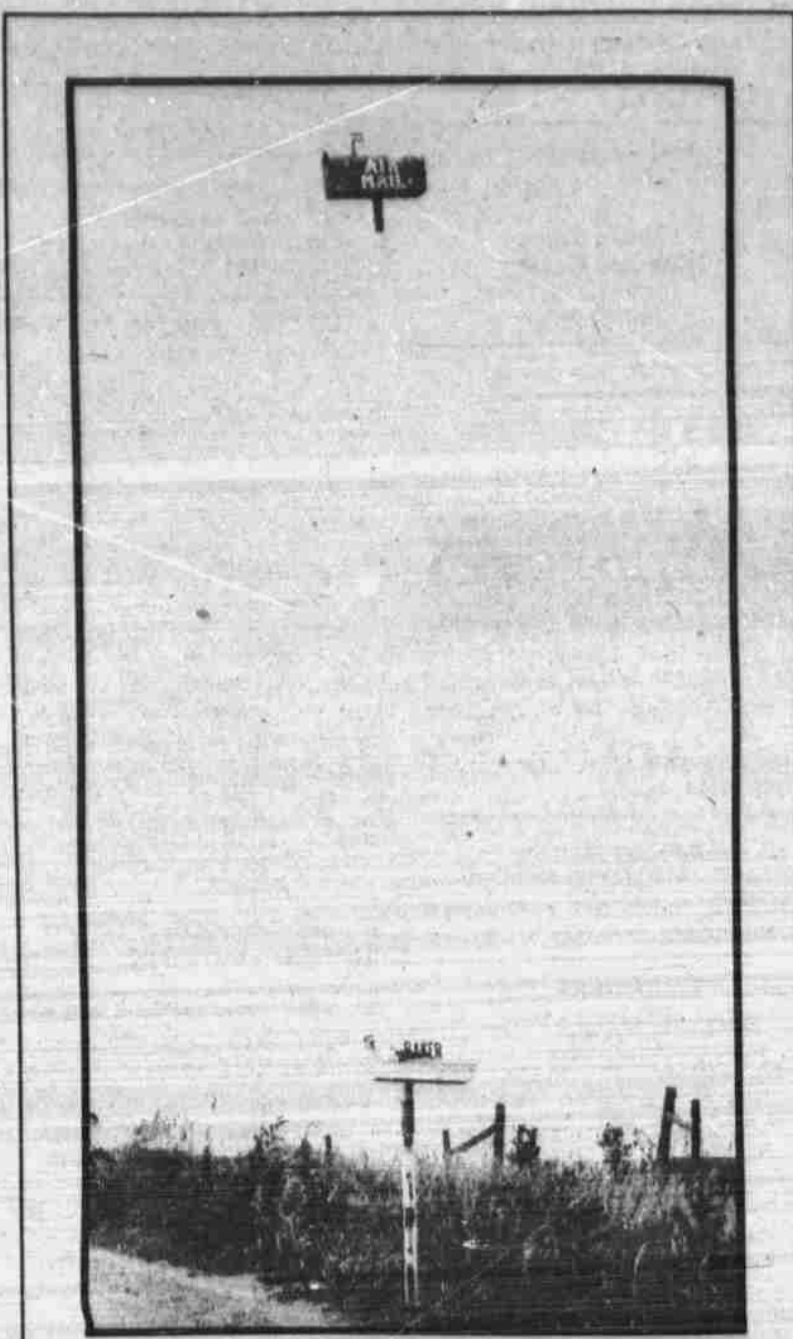


Photo by Tim Ford

To deliver mail to this box you have to be a crazed helicopter pilot or the Jolly Green Giant.

Nationwide search ends

The appointment of Robert H. Rutford, Washington D.C., to vice chancellor for research and graduate studies has ended the nationwide search.

Rutford, 44, said a responsibility of his new post is to provide assistance to the faculty and to try to get input from faculty members on the new program.

He said he will attempt to stimulate community interest in the program.

Monitoring funds from state and private sources are also a part of his job, he said.

Rutford, a former UNL faculty member, headed the Ross Ice Shelf Project from 1972-75. He is director of the Division of Polar Programs in the National Science Foundation. He also serves as chairman of the Inter-Agency Arctic Research Coordinating Committee of the Federal Council on Science and Technology.

A native of Duluth, Minn., Rutford holds three degrees from the University of Minnesota, including a Ph.D. from the same.

Rutford will receive a \$44,000 annual salary.

Watch out, pests!

By John Ortmann

Nebraskans having trouble with insect pests or confused about pesticide regulations now have a new source of help available to them.

Roger Gold, newly appointed coordinator of environmental programs for the Institute of Agriculture and Natural Resources, (IANR), said his office will provide information on pest control, pesticide usage and agricultural pollution control.

The Salt Lake City native said his office will communicate with the federal government about pesticide use in Nebraska.

"There are numerous requests from such agencies as the Environmental Protection Agency (EPA) or the United States Dept. of Agriculture (USDA) on pesticide use in Nebraska," Gold said. He said his duties include collecting and forwarding pesticide information to the EPA and USDA for registration and regulation.

These pesticides include those on the EPA Rebuttal of Presumptions Against Registration list, Gold said, which have been found to "cause risk to man or the environment." Gold said if a chemical is determined necessary for agriculture with acceptable risk it will be registered for use by the EPA. Those deemed not necessary will not be registered, he said.

Gold emphasized that his office is not a regulatory agency. He said its function is to provide communication between the federal government, the IANR and the people of Nebraska, with the idea of helping them meet federal regulations.

Gold said his staff is small, but he will collect information from relevant sources within the IANR. This information eventually will be available in newsletters and other publications at county extension offices, Gold said.

Gold said his duties include serving as state pesticide coordinator and as a member of the Nebraska Natural Resources Commission. He said he also will teach Agriculture College classes on the environmental aspects of pesticide use.

Those wanting pesticide information should call Gold's office in room 101, Old Veterinary Science Building. The number is 472-1446.

Professor Odell dies

Assistant UNL professor emeritus of American Literature Dr. Ruth Odell, 85, died Monday at her home in Hollywood, Calif.

A long-time freshman English professor, she was a faculty member from 1937 to 1956.

She was a Fullerton native and a 1914 University of Nebraska graduate who did post-graduate work at the University of Chicago.

She moved to Hollywood after retiring in 1960. She was a member of the Modern Language Association, the National Council of Teachers of English, College English Association, American Association of University Professors and American Association of University Women.

Funeral arrangements are pending at a Fullerton funeral home.

crossword puzzle

Edited by WILL WENG

ACROSS

- 1 Pile
- 4 English author
- 9 Short depots
- 13 Stravinsky
- 15 Edison's Park
- 16 Pronoun
- 17 Hamlet and Borge
- 19 Saarinen
- 20 Alice's mad friend
- 21 Wrestle a steer
- 23 Map aid
- 26 — contendere
- 27 Pedestal parts
- 30 — Plains
- 32 Dog-eared items
- 35 Spanish gold
- 36 Architects' patterns
- 39 Invitation letters
- 40 Noun-forming suffix
- 41 Ruled
- 43 Beverage
- 44 Flabby
- 46 Cheap
- 47 "Raining cats — dogs"
- 48 Hanker for
- 50 Specified
- 51 Scandinavian
- 53 Sightsee
- 55 Mountain ash
- 57 Tip
- 60 Simple organisms
- 64 Old Peruvian
- 65 Trenchermen
- 68 French state
- 69 "Pagliacci" character
- 70 Foot and stamp
- 71 Loser to Mondale
- 72 Bone: Prefix

- 73 Verb suffix, in England

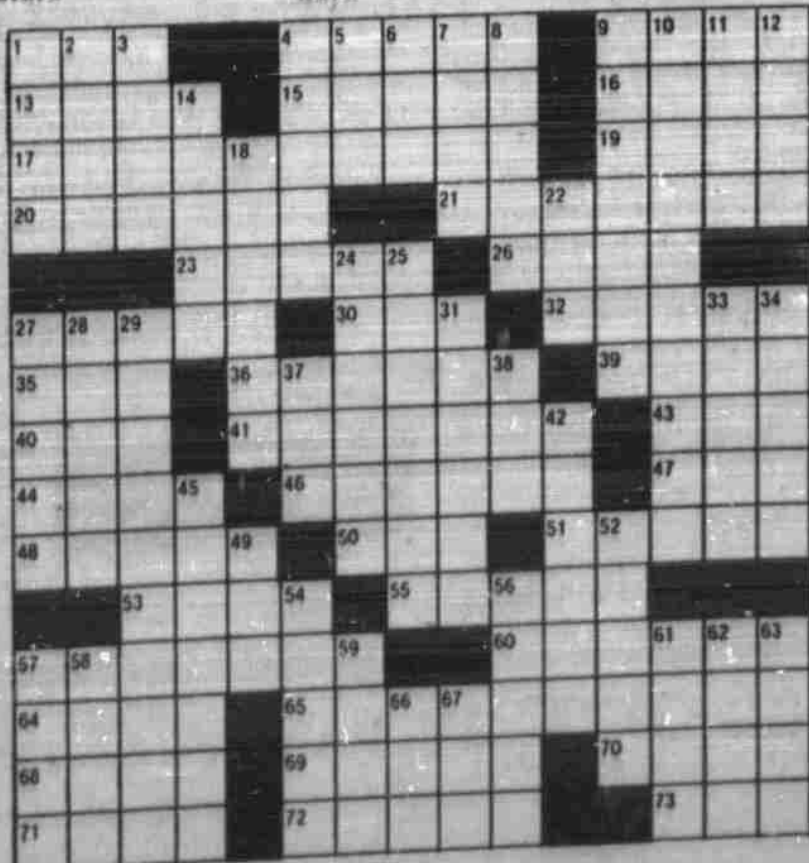
DOWN

- 1 Close to
- 2 City of India
- 3 "You're a — and don't know it"
- 4 Naval officers: Abbr.
- 5 U.S. cartoonist
- 6 Raggedy girl
- 7 Glass bubble
- 8 Ship's petty officer
- 9 Outstanding
- 10 Canis Major feature

- 11 Prefix for dynamics

- 12 Air pollutant
- 14 Betting odds, for one
- 18 Got uptight
- 22 Kind of eared or sided
- 24 Inferences
- 25 More like football's Hanratty?
- 27 Lace mat
- 28 Palmer
- 29 Opinionated
- 31 Taken care of
- 33 Smoothes
- 34 Kind of preliminary work

- 37 Footlike part
- 38 Portion: Abbr.
- 42 Energetic one
- 45 Turn the palm facing down
- 49 Fanatic
- 52 Golf situation
- 54 Right-hand page
- 56 Burning bush
- 57 Like the piper
- 58 Aware of
- 59 Greek letters
- 61 — B'rith
- 62 Says further
- 63 Abstract being
- 66 Can. province
- 67 How, in Hamburg



WELCOME

I N G D I N G

Tomorrow Night
Sept. 1

Frisbee
Skateboarding
Puppet Bagman
Food
and

Country Rock with
SOUR MASH at 4:00
Rock 'n Roll with
HOTFOOT at 6:30

Nebraska Union Plaza



Union Main Lounge If It Rains

