

# UNL given clean bill of health for next 10 years

By Ron Ruggless

UNL got a checkup this summer, and the institution received a clean bill of health for the next 10 years.

The North Central Association of Colleges and Universities—not doctors—evaluated the health of UNL and the University of Nebraska Medical Center and accredited the campuses for 10 years.

The last diagnosis was in 1971, when the accreditation team gave a 5-year accreditation. UNL Chancellor Roy Young said the university was in the process of reorganization that year, resulting in a shorter accreditation period.

The North Central Association sets down requirements universities must meet to be accredited, Young said, and UNL met those requirements.

The chancellor said the good checkup was not without its health warnings, though, most dealing with money problems.

## Concerns

Among the concerns of the accreditation team were:

—**Academic advising.** It was considered weak in some areas, Young said, mainly because of the lack of manpower in advising. More money for more manpower is needed, Young added.

—**Salaries.** They are not competitive with comparable institutions, Young said. This is an age-old problem at UNL, and Young said the university will be appealing to the Legislature in 1978 for higher salary allocations.

—**Teaching assistants.** Stipends to teaching assistants need to be raised to meet inflation, Young said. Again, it is a matter of having the allocation from the Legislature.

—**Instructional and research equipment.** Funding is insufficient in this area. "Operating budgets are low for most colleges, and, again, they have not kept up with inflation," Young said.

—**Decision making.** The involvement by the NU Board of Regents and the Legislature was deemed excessive by the team.

—**Health programs.** The accreditation team said the geographical distance between the College of Dentistry in Lincoln and the medical center in Omaha caused a breakdown in communications and coordination of health programs. Young said the College of Dentistry does not see this as a concern.

—**Research and creative work.** Young said the team

believes the university needs to improve the atmosphere for scholarly writing and research.

## Good points

Good points in the team's accreditation report outnumbered the bad points. They include:

—a progressive and forward-looking chancellor and staff.

—dedicated faculty.

—articulate, interested students.

—good Student Affairs organization.

—excellent results from the "Areas of Excellence" program.

—outstanding faculty and good maintenance.

—balanced undergraduate education.

—good student housing program.

—ample extra-curricular cultural life—music, art and recreation.

—continued improvement of library collections.

—sensitivity to the agricultural needs of the state through the Institute of Agriculture and Natural Resources.

—highly-qualified nonacademic personnel, such as secretaries and maintenance workers.

—outstanding security program.

—a high degree of satisfaction and pride in UNL by faculty, students and alumni.

Young said the accreditation costs the university \$6,000 and is conducted by authorities from other universities.

## Accreditation effect

He said the good accreditation is frequent among well-established universities like UNL.

Besides evaluating UNL and the medical center, this accreditation included the School of Technical Agriculture at Curtis, the State University of Nebraska (SUN), the University-wide Graduate College and NU governance and administration.

The University of Nebraska at Omaha was evaluated and accredited for 10 years in the fall of 1976.

Young said the accreditation does not directly affect students or faculty.

The main result of the accreditation will be improvements in the weak areas of the university, which were pointed out by the team, Young said.

All of the areas, even secretarial and maintenance employees, in the evaluation reflect the quality of the university, he said.

# daily nebraskan

wednesday, august 24, 1977 vol. 101 no. 1 lincoln, nebraska

## UNL's academic programs sized up

Sizing up academic programs at UNL this summer was a sizeable task for the North Central Association of Colleges and Universities accreditation team.

They commented on the programs in their report to the university. These comments include:

### Agriculture

The team found needs expressed by personnel to be in

salaries, increased budget, improved instruction and a more reasonable faculty-student ratio and problems seen throughout the university.

### Architecture

The performance of students in architecture has been good and the record of placement of graduates equally good.

### Arts and Sciences

The college needs a regular and solidly funded sabbatical program, increased resources for book acquisitions, additional computer funding for research, instructional data processing, increased stipend for teaching assistants and attention to faculty workload and pay scales.

### Business Administration

Administrative leadership in the College of Business Administration is impressive and a clear strength. Sound management procedures have been established and have been helpful in enabling a large student enrollment to be handled with somewhat limited resources.

Faculty morale is high and there is large and strong M.B.A. and M.A. programs. Research activities in the college are improving and could be improved by the reduction in faculty teaching loads.

### Dentistry

Disparities in salaries against other dental schools and private practice have, according to the college's records, cost them 28 valued full-time faculty members since 1971.

### Engineering and Technology

Engineering and technology enrollments on both the Omaha and Lincoln campuses have been increasing steadily for the last three years.

With only a slight increase in instructional resources in that period, the increase in advising load and the student-credit hours per faculty member has been significant.

Continued on p.7

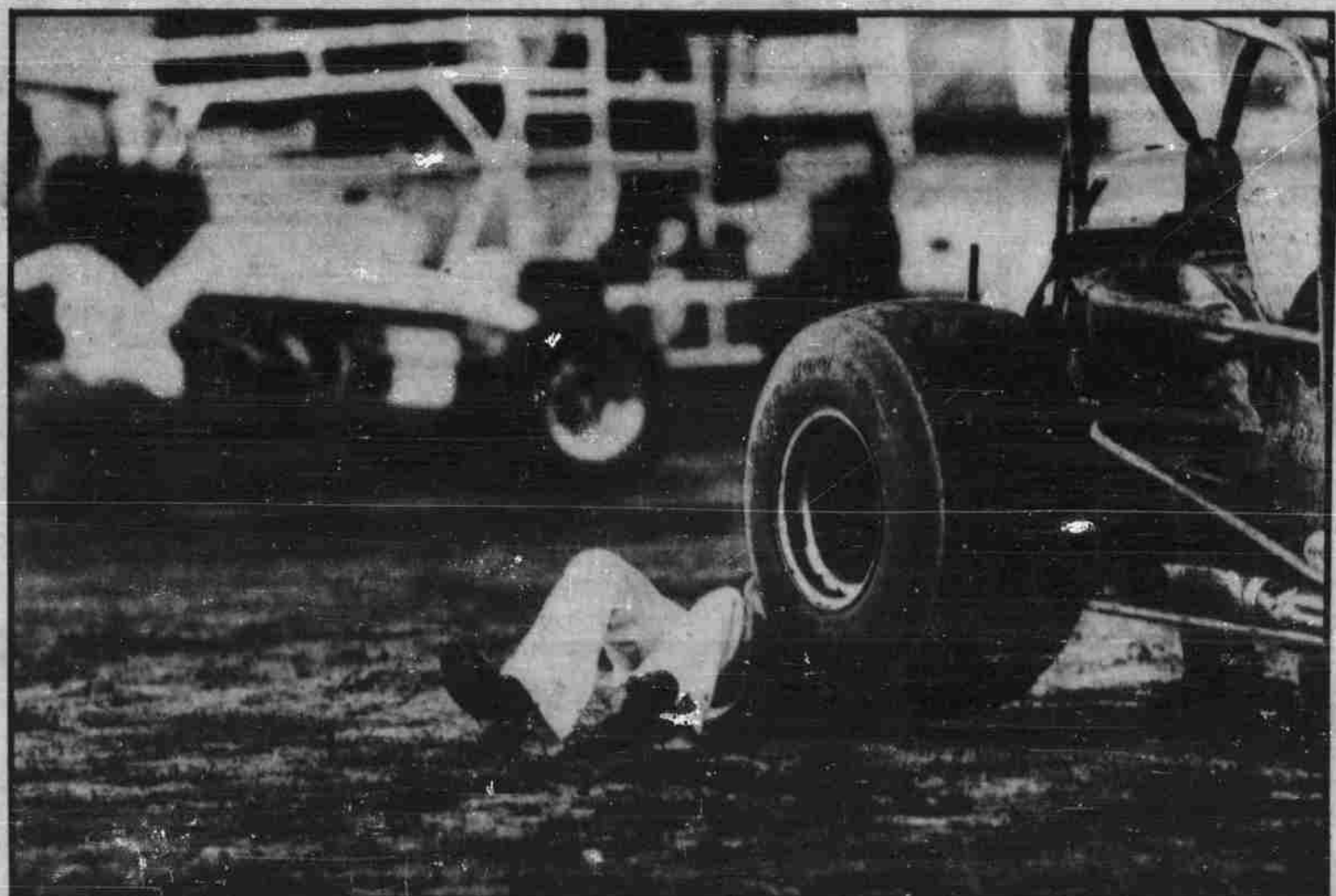


Photo by Ted Kirk

No, this isn't the tail end of an accident, it's only a mechanic making some last-minute adjustments. For more squealing tires and flying dirt, see pages 40 and 41.

## We were a little squirrely once

By Mary Jo Pitzl

(To the Tune of "Deck the Halls")

Deck the halls with shouts of "golly!"  
Fa la la la la la la la  
'Tis the season of freshman folly,  
Fa la la la la la la la  
Don they now their letter jackets  
Fa la la la la la la la  
Studying their freshman packets  
Fa la la la la la la la  
Strike the dorms and join a frat  
Fa la la la la la la la

Eat the dorm food and get fat  
Fa la la la la la la la  
Follow them to all their classes  
Fa la la la la la la la  
They'll get lost and look like —  
Fa la la la la la la la  
See the blazing fire on "R" Street  
Fa la la la la la la la  
Throw in your books and what a feat!  
Fa la la la la la la la  
(resounding chorus)  
They're squirrely now, but wait a year  
Fa la la la la la la la  
You'll forget that they were even here  
Fa la la la la la la la

Ah yes! It's the beginning of a whole new festive season, that time of the year to buy a new pair of pajamas decent enough to have your roommate see you in, when all ambitious summer scholars make a frantic attempt to cram their summer reading course into one all-nighter, when all the new albums are packed up for the return trip to the Big U.

And accompanying all this flurry of activity is the advent of The Freshman on campus.

Armed with a year's supply of home-baked goodies and their coordinated bedroom ensemble, they new freshman class descends on campus with enough squirrelyness to send everyone scurrying for acorns.

Continued on p.13

## inside wednesday

Will they or won't they: The Lincoln Foundation is studying city-county merger . . . . . p.38  
Oh, give me a lounge: Both men and women will be looking for homes in the over-crowded residence halls . . . . . p.27  
Seating in downtown Omaha? The committee studying the future of Memorial Stadium is looking towards adding more seats . . . . . p.47

