

Summer Nebraskan

Number Six

University of Nebraska-Lincoln

July 15, 1976

School of Social Work director:

School's problems seen as challenge

By Theresa Forsman

The problems of NU's School of Social Work are part of the reason Hobart Burch decided to accept the position of director of the school, said Burch, who will assume the director's duties next month.

"The problems the school is facing will be a challenge," Burch said. "I wouldn't want to sit on a fat school."

The Graduate School of Social Work was threatened last year with loss of accreditation by the Council on Social Work Education, but accreditation was extended tentatively until 1977, after the UNL and University of Nebraska at Omaha (UNO) programs were merged at UNO.

Burch said he is confident the school will be accredited in good standing by the end of next year. "The threatened loss of accreditation is a crisis but with changes and with the support I expect to receive from the university, we will be accredited if we do our work," he said.

No revolution planned

Burch said he is not planning a "revolution" in the school, but that this fall he will be reviewing and "presumably revising" its graduate curriculum. He will be recruiting new faculty members, Burch said, to fill vacant positions and one new position. He said he was not sure the new faculty members could be hired by September.

"Nebraska's School of Social Work has a unique

opportunity to serve both the rural and urban social needs of the state and the region," Burch said.

Reasons for temporarily denying accreditation included:

- Lack of university support for the school.
- Lack of congruity between the missions of the Lincoln and Omaha campuses.
- A minimal number of racial minorities in the faculty and student bodies.
- Uneven quality in the school's curriculum.

Burch said that after talking with members of the Council on Social Work Education he found another reason for the accreditation problem was lack of information about Arts and Sciences College requirements outside the School of Social Work.

He said he will try to find out why this information was not available and said he would send it to the accreditation team if possible.

Financial outlook better

Burch said the financial problems of the school are not as severe as they were last year when the accreditation team visited the school.

"I cannot say right now whether the funding is adequate but it is better than it was because we are doing less. The school was spread too thin," he said. He said the scope of the program has narrowed since programs do not have to be maintained on both campuses. Burch added he would like to continue freshman and sophomore courses on the UNL campus and said he hopes to continue student

internships in social work organizations in Lincoln.

Burch said his 20 years of social work experience have made him qualified to "pull the school together."

"My career has been one of leadership in bringing disparate organizations together without being able to force them." His background includes program development, he said.

Executive director

Burch is now executive director of the National Assembly of National Voluntary Health and Social Welfare Organizations.

The assembly is made up of 40 national organizations, such as the American Red Cross and the Boy Scouts of America.

Burch said the location of the school was another factor in his decision to accept the director's job.

"I have never liked the congestion, the pollution and the noise of the East Coast metropolitan areas," Burch said, "but it has been the price I had to pay to do what I wished."

Burch will be paid an annual salary of \$30,000 as director. This is about \$7,000 less than his salary now, he said.

"Money has never been a factor in my decision to accept a job," he said.

Burch will replace Ronald Ozaki, acting director of the School of Social Work.

Burch's wife, Genevieve, will join NU as a research assistant in the Center for Applied Urban Research.

Regents to consider UNL energy center

UNL Chancellor Roy Young will ask the NU Board of Regents Saturday to approve the establishment of an Energy Research and Development Center at UNL.

The board will meet at 8 a.m. in Regents hall, 3835 Holdrege St.

In an explanation to the board, Young said that in view of the urgent and broad scale energy problems confronting the state and the nation and the numerous capabilities available at UNL to study problems associated with energy conservation and energy resource development, UNL should establish the center.

The center would develop a broad-range program of energy studies in several disciplines and would coordinate energy-related research, training and public service programs at UNL, Young said.

Young said the energy studies programs would be concerned with planning energy consumption, energy generation and distribution and its environmental effects.

Budgets on agenda

The board will approve the university's 1976-77 operating budget and will consider guidelines for the 1977-78 operating and capital construction budgets.

This year's operating budget had to be revised because the Legislature cut \$1 million from it. Next year's budget must be given to Gov. J. James Exon by Sept. 15.

University of Nebraska Medical Center Chancellor Robert Sparks will ask the board to approve a \$25 Program and Facility Fee to be paid each semester by medical center students for student health services at the medical center. Sparks will ask that coverage for a student's dependents be available for the same rate which students would pay.

The board also will be asked to approve a contract with the Nuclear Regulatory Commission for \$53,922 to develop a detailed study of the seismic risk factors of the Nemaha Ridge Area in Nebraska. In an explanation, Young said several nuclear and fossil fuel plant site studies in Nebraska have been prepared recently by industry to evaluate seismic risk factors. The studies were completed by the Nuclear Regulatory Commission but they show a lack of continuity across state lines.

Young said the new study would be helpful in site evaluation for present and future power plants.

An agreement between the university and the Nebraska Department of Economic Development is on the agenda for the regents' approval.

Mental health laws

The Department of Economic Development, with a grant from the U.S. Department of Health, Education and

Welfare, has asked the university's Department of Psychology to assist in a project which would provide county officials with information and explanations of the laws governing the processing of mental health and mentally retarded persons in public systems. Bruce Sales, associate professor of psychology, would be project director.

The regents are expected to approve Osmund Gilbertson as chairman of the UNL Department of Agricultural

Education. Gilbertson is the chairman of the Agricultural Education Dept. at California Polytechnic State University. If approved, he will succeed Roy Dillon, who is serving as interim department chairman.

Also scheduled for board approval is the recommendation of Daryl Swanson as manager of the new Nebraska East Union, scheduled for completion in December. Swanson is now assistant director of the Nebraska Union on the city campus.

Inside

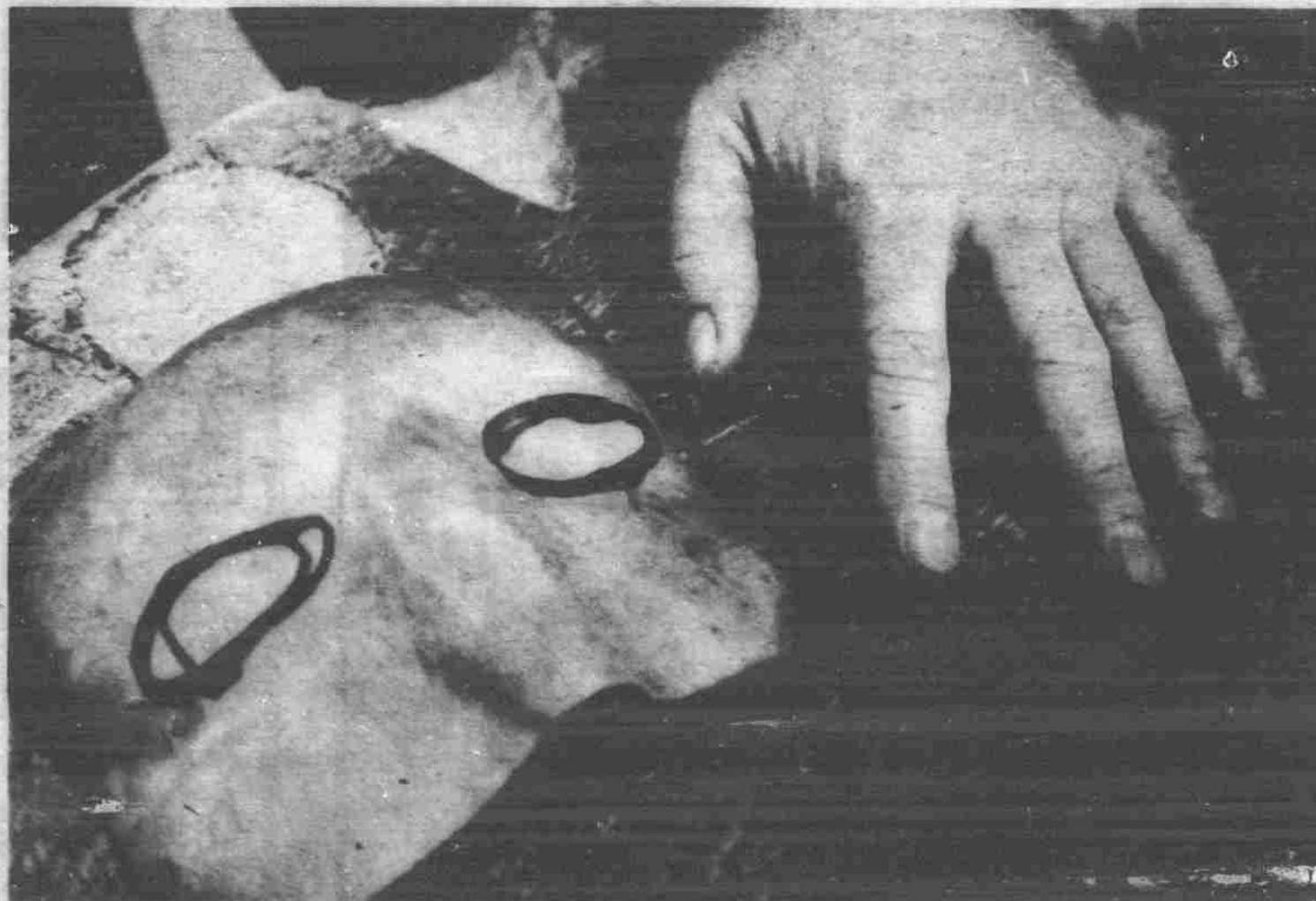


Photo by Steve Boerner

Metalcraft workshop could be beginning
of new art program at UNL — P. 4