

Long-awaited union nearing completion

By Theresa Forsman

Construction on the new Nebraska East Union on UNL's east campus is about two-thirds complete, said Daryl Swanson, assistant director of the Nebraska Union. Swanson will be manager of the Nebraska East Union when it opens in January.

The east campus community has waited more than 20 years for the new building, Swanson said. A new union was considered in the mid-1950s, Swanson said, but added that increasing enrollment on the city campus diverted attention and money to the Nebraska Union. An addition to the Nebraska Union was finished in 1959.

These circumstances were repeated in the 1960s, Swanson said. A second addition to the Nebraska Union was completed in 1969.

The east campus union is now housed in the basement of the east campus Activities Bldg. These quarters were intended to be temporary when they were assigned 25 years ago, Swanson said.

Centrally located

The new union is centrally located on the east campus between the Plant Industry Bldg. and Miller Hall.

The structure and functions of the new union were decided upon after comprehensive planning, he said. He explained that a student committee worked for two years to determine which needs a new east campus union should serve. Their findings were submitted to the Nebraska Union Planning Committee in December, 1972.

In accordance with the study, the new union will provide space for several lounge areas, a bookstore, a cafeteria and kitchen, meeting rooms, student and administrative offices, a study lounge and a recreation area.

Also, classroom space will be provided in the union for the Department of Food and Nutrition. The department

will use the union kitchen and the classrooms in teaching food preparation courses, Swanson said.

College to purchase space

The College of Home Economics has agreed to purchase the classroom space in the union, so student fees will not be supporting academic programs, Swanson said.

The \$4.3 million union will be paid for from student fees during the next 20 years.

Students living in Burr and Fedde residence halls on the east campus will be served their meals in the union cafeteria, Swanson said. A cafeteria in the Nebraska Center for Continuing Education now provides east campus residence hall students with meals.

With 85,000 square feet of floor space, Nebraska East Union is about half the size of Nebraska Union. The space was designed to serve an east campus enrollment of 4,000 by 1980, Swanson said.

However, he added, east campus enrollment for the fall semester of 1975 was already slightly higher than 4,000.

Includes professional colleges

This figure includes students enrolled in the College of Dentistry, in the Law College and in undergraduate courses taught on the east campus, Swanson explained.

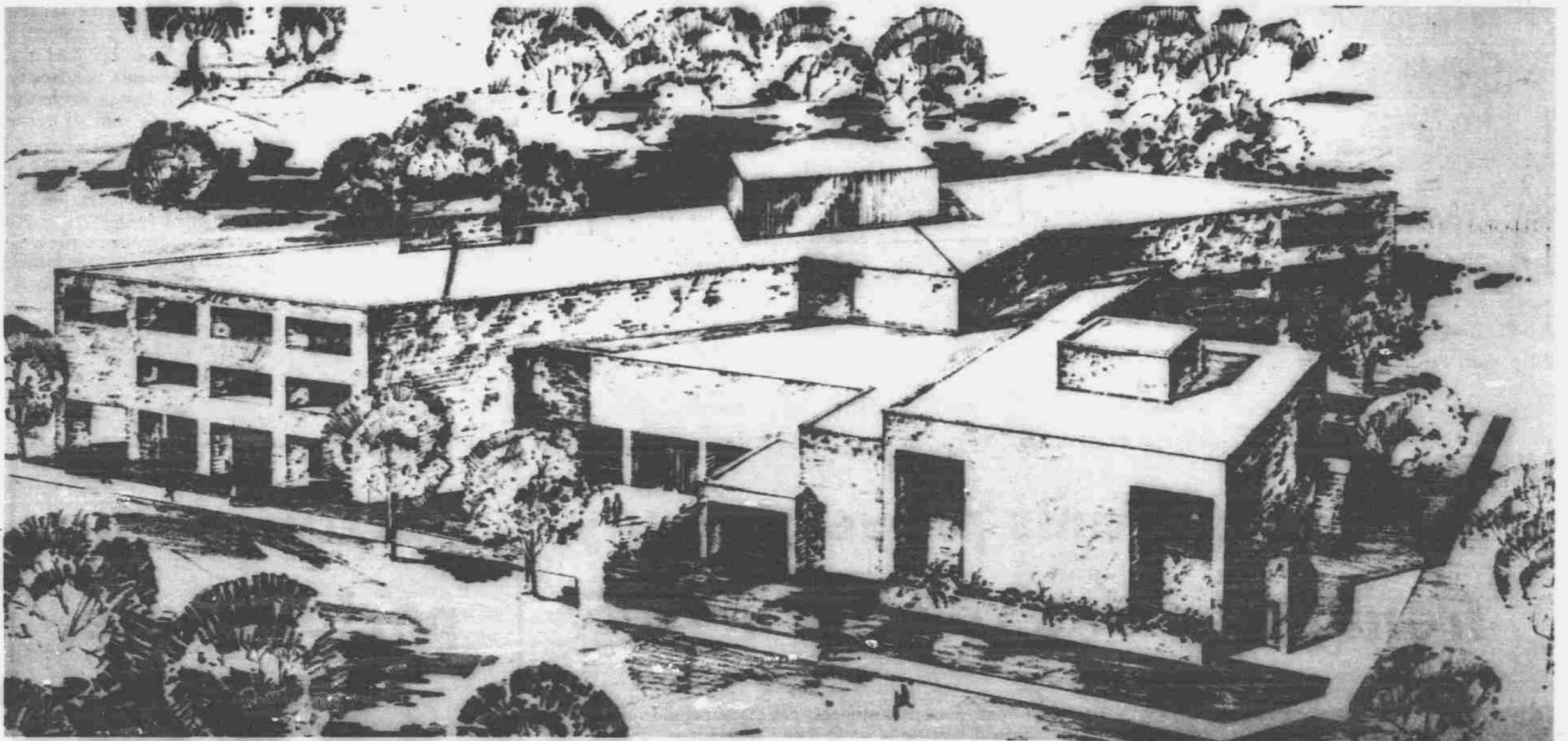
Swanson said the new building will serve the needs of faculty and staff members and students on the east campus as well as students living near the east campus.

The opening of the new union will create 36 jobs, Swanson said. Professional staff will include Swanson, a program and recreation manager, a food service manager and an assistant food service manager. Most of the new jobs will be in the food service, Swanson said.

Audrey Newton, chairwoman of the Department of Textiles, Clothing and Design in the College of Home Economics, is assisting the university in planning the interior design of the building, Swanson said.



Daryl Swanson, who will be manager of the new Nebraska East Union, stands in front of what will be the union's information desk. Photo by Steve Boerner



The architect's rendering of the Nebraska East Union, scheduled for completion in January. The building's shape is a modified parallelogram.

A Summer Special:

**A Complete Hairstyle
for \$4.75**

Clip this ad and give it to Ann, Dana or Linda at Shear Design and they'll give you a complete hairstyle for \$4.75 (regularly \$10) You save over 50 per cent!!

You see, they know you'll like the results and will come back again. It's that simple.

Offer good only with ad. Expires June 26. in the Glass Menagerie






When you're a stone's throw from the altar, choose a beautiful stone.

Sartor Hamann

REGISTERED JEWELERS AMERICAN GEM SOCIETY

Downtown 1129 "O" St. Lincoln	Gateway Enclosed Mall Lincoln	Conestoga Enclosed Mall Grand Island
-------------------------------------	-------------------------------------	--