

Morris Udall

Photo by Ted Kirk

Udall: U.S. in trouble

By Dick Piersol

Democratic presidential candidate Rep. Morris K. Udall of Arizona made an abbreviated appearance at Centennial College Thursday.

Udall said his plane was delayed by 80 mile per hour headwinds during his flight to Lincoln from Illinois.

In a 20-minute speech and question and answer period before a crowd of 200, mostly students, he said the United States is in serious trouble under the Ford administration and that the 1976 election will be the most important election for a generation.

"We've come to the end of several eras," he said. "In the past 30 or 40 years this nation has undergone unbelievable exponential growth. All of our progress in transportation, the rise of the suburbs and technology in general have been based on the availability of cheap resources.

Udall attacked President Gerald Ford's economic, environmental and energy policies.

He said Ford was willing to tolerate not only the present level of 8 million unem-

ployed persons, but 6 or 7 million unemployed in three years.

"I think the President has Herbert Hoover's old economists hiding out in a closet in the White House," he said. "He's telling a whole generation of Americans that this economic system does not need them. He is willing to allow the black and Chicano unemployment rates to approach 30 per cent."

"In 18 months this has become the worst administration on environmental issues since that of Warren G. Harding," Udall said. "It has stood with big oil concerns when it came to offshore drilling and vetoed a strip mining control bill that took four years of my life to develop."

Udall said it is untrue that Americans cannot have environmental protection and less unemployment.

After his speech, Udall answer four questions from his audience.

He said he supports Ralph Nader's Public Interest Research Groups and added that Nader epitomizes all that is good about America. He said the government can be responsive if groups like Nader's put the right amount of pressure on the right congressmen and senators.

Udall said in response to Ford's proposed \$28 billion tax cut that he would like a \$58 billion tax cut if it would benefit middle and lower income Americans.

"I have two reservations about this tax cut," he said. "First, Ford intends to cut expenses by \$28 billion as well. I doubt if any of that is coming from the defense budget that rose \$16 billion last year. Second, I doubt if the tax cut benefits the right people. There were 400 people who made over \$250,000 last year and paid no taxes at all."

Udall said he wanted to see several conglomerates broken up in an effort to give them "a dose of what you hear the Chamber of Commerce call competition."

He said the corporate structures of the drug, steel, food and oil industries force prices artificially high.

"Of 400,000 corporations in this country, 200 control two-thirds of the assets," he said.

Udall said he favors breaking up oil companies' vertical and horizontal integration.

He said allowing the oil companies to control their products at every level of processing and distribution eliminates com-

Continued on p.6

friday, october 10, 1975

volume 99 number 27 lincoln, nebraska

daily nebraskan

Tenure report submitted to regents

By Randy Blauvelt

Calling their report "the first and certainly the most accurate and comprehensive study" of the University of Nebraska's tenure system, the All-University Tenure Density Committee has submitted recommendations to the NU Board of Regents for consideration at its monthly meeting today.

The committee, headed by NU Executive Vice President for Academic Affairs Steven Sample, was ordered by the regents last April to study the ratio of tenured faculty members to the number of faculty members eligible for tenure—tenure density.

The 21-page report outlines five recommendations for changes in tenure-granting procedures at the three NU campuses.

They are:

—Adjustments should be made in the present tenure system to insure a reduction in tenure density over the next several years.

—Tenure should be awarded only at the end of the full, seven-year probationary period, except for faculty members with "special merit" or previous tenure-related experience. Faculty members with tenure experience at other universities should be placed on a four-year probationary period.

—Tenure-bound faculty members should undergo mandatory reviews on the departmental and college levels and a final major review near the end of their sixth year of service.

—Each campus should review, bolster,

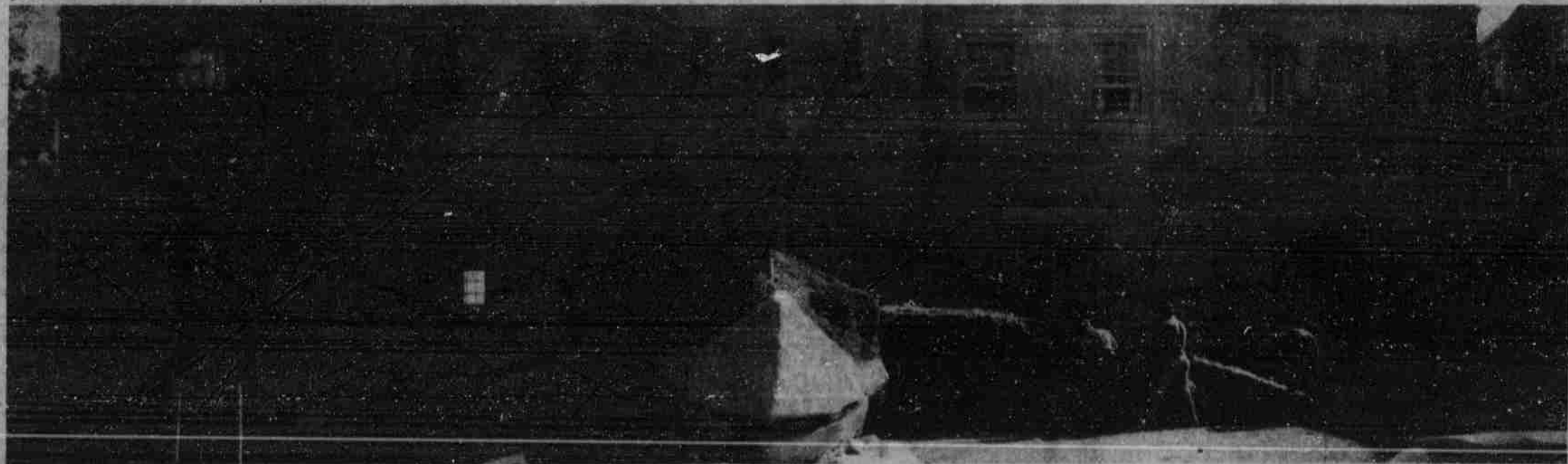
distribute and stringently enforce written standards for tenure, preferably with advice from an all-campus committee.

—Since "tenure is the most significant" of all rewards the university can offer its faculty, tenure should operate independently of salary and promotion.

—The tenure density study should be updated annually, prior to departmental tenure reviews.

The report also said the university's "tenure classes," those eligible for tenure, have been unusually large the last few years, but predicted that tenure classes will be smaller in the next seven years.

The regents are not expected to act on the report until their November meeting to allow review by other university personnel.



REK—SUHN—ROC tonight

New homecoming activities planned

REK-SUHN-ROC (Cornhusker spelled backwards) will feature a variety show in the Harvest room including a washboard band, Scarlet and Cream singers and a barbershop quartet. Also performing are Orchestras, Gary Abel, the UNL pop band and Lambda Chi's 1950s band.

Among other groups appearing in the Union are Rainwater, Neo-Classic Jazz Orchestra, a woodwind quintet and the Bohemian Stationary Marching Band.

Pianists and guitarists will appear in the south Crib and old movies will be shown in the small auditorium.

A casino party will be held in the Panhellenic-IFB office.

Local artists

Local artists can pay a \$5 table fee to participate, displaying and selling their crafts in the lounge.

Profits from REK-SUHN-ROC will be divided equally among the sponsors, Hills

said. Each sponsor must contribute \$50 for expenses.

"We have not gotten the bills yet so we aren't sure how much money we will have to pay out before we begin to make profit," Hills said. All groups are appearing free of charge.

In addition to REK-SUHN-ROC, an all-university Yell Like Hell pep rally will be held today at 6 p.m. The rally will begin at the Union and march to Memorial Stadium, Hills said.

Homecoming displays

Homecoming displays in front of the Greek houses and dorms will be judged this afternoon. Awards for best display will be presented at REC-SUHN-ROC.

Homecoming finalists also will be introduced at REK-SUHN-ROC tonight. Formal crowning of Homecoming Royalty will be at the halftime of the Nebraska-Kansas game.

Another homecoming event, Balloon Day, is the Tassels attempt to sell twice as many balloons at the homecoming game as for the other games. Hills said the Tassels hope to sell about 3,700 balloons for homecoming.

Residence halls, Greek houses and student organizations may sign contracts to have balloons delivered to their doors Saturday morning. The more balloons bought by contract, the less the cost, Hills said.

Instead of the traditional dance, today's homecoming celebration, REK-SUHN-ROC, will include five hours of activities, from 8 p.m. to 1 a.m. in the Nebraska Union. Admission is 50 cents per person.

The nontraditional homecoming celebration is being sponsored by Tassels, Corn Cobs, Gamma Lambda (UNL band society), Builders and Student Alumni Board, Tassels President Gina Hills said.

inside today

Regents: What they will be discussing today p.6

Also Find:

Editorials p.4
Arts and Entertainment p.8
Sports p.11
Crossword p.12
Short Stuff p.2

Weather

Friday: Sunny and warmer. Temperatures in the mid-70s.

Friday night: Skies fair, highs in the upper 30s.

Saturday: Temperatures in the upper 70s to low 80s.