

Osborne praises improved Huskers for IU shutout

By Susie Reitz

A much-improved offense and excellent defense were keys to the shutout of a "fair" Indiana team Saturday, Coach Tom Osborne said at the Extra Point Club luncheon Monday.

Osborne said he was glad to win big (45-0) after the opener against Louisiana State University (LSU) the week before, which Nebraska won 10-7.

"I was amazed how many people reacted last week like we lost," he said.

The UNL kicking game was sound, Osborne said, despite the temporary loss of kicker Mike Coyle.

Coyle accidentally kicked a helmet in practice Friday and sat out Saturday with a swollen ankle, Osborne said. His point-after and field goal duties were performed by Al Eveland, who kicked seven extra points and one fieldgoal.

Coverage excellent

Punting and punt coverage were excellent, Osborne said. Neither Indiana or LSU had any return yardage on points.

Osborne praised the play of defensive linemen Mike Fultz, John Lee and Bob Maring.

Ray Phillips, a defensive end playing his first game at UNL, had some great plays, Osborne said. Phillips is a junior college transfer and was ineligible last fall.

"We weren't sure about Ray," Osborne said, "but he did well Saturday and showed he knows how to play football."

Pass defense excels

Osborne complimented the linebackers and secondary for holding Indiana to 28 yards passing and for making two key interceptions.

"Any time you hold a team like Indiana that has some skilled runners to only 97 yards total, it's a fine defensive effort," Osborne said.

Osborne said quarterbacks Terry Luck and Vince Ferragamo played well.

"We think we have two capable quarterbacks," he said, "and would be comfortable playing either one against any Big 8 team."

Luck's speed and passing percentage improved over the LSU game, Osborne said. Luck completed 12 of 17 passes against Indiana, 8 of 21 against LSU.

Quarterback battle

Osborne said junior quarterback Earl Everett will be alternating with sophomore Randy Garcia each game. Everett suited up Saturday and played most of the fourth quarter.

"With the 60 player limit we just can't afford to suit up four players for one position each game," Osborne said.

Fullback Tony Davis had improved blocking from his LSU showing and I-back John O'Leary played consistently well, Osborne said.

"We're expecting the team to keep improving every week," Osborne said. "We just can't sit still because we have to keep getting better for the big games later in the season."

Nebraska can expect a test of their secondary next Saturday against Texas Christian University (TCU), according to freshman Coach Jim Ross, who scouted TCU Saturday.

Ross said TCU passed more than 45 times against Arizona State University and "would have passed more if the plays hadn't been broken."

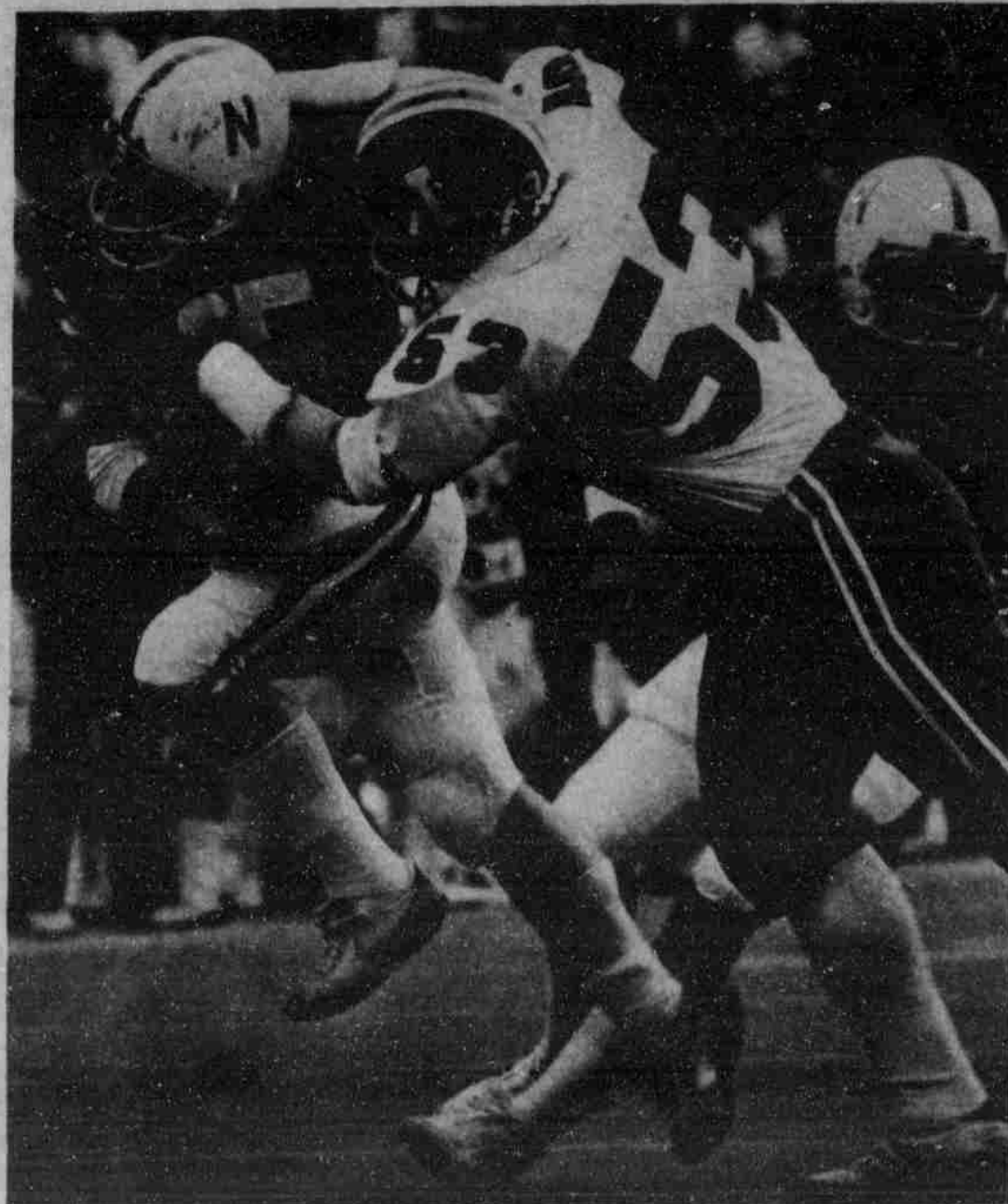


Photo by Ted Kirk

Tony Davis (25) breaks the first of two tackles on his way to a 20-yard scoring run against Indiana Saturday.

sports

Ski club members plan Utah trip for winterim

By Pete Wegman

Inexperience, usually a handicap, doesn't seem to bother UNL's ski club, according to Paul Oppegard, vice president.

"About 70 per cent of our club members are beginners," Oppegard said.

Last Wednesday the club held a party to recruit members. As a result, club membership jumped from 60 to 325 members.

"I think the club started in the early 70s, but it hasn't really grown until the last few years," Oppegard said. The club was formed so students could receive group rates on ski trips, he added.

The club's main activity this year is a ski trip planned for winter break. In January, club members will ski at Snowbird near Salt Lake City, Utah.

Skiers will fly

"We're going to fly there this year," he said. "It's the cheapest and safest way to get there."

Oppegard said he hopes the winter trip will attract at least 150 club members, enabling them to charter a plane.

Last year buses shuttled 92 club members to Copper Mountain in Colorado and 48 to Park City in Utah.

Club membership costs \$5, Oppegard said. The club also receives funds from student activities fees—\$150 last year, \$265 this year.

"That money is used mainly for publicity," he said. "It costs money to pub-

licize, but it's for a good cause."

Ticket raffle

The club is beginning a fund-raising ticket raffle this week. A pair of skis, ski poles and ski boots will be given away.

Oppegard cautioned beginning skiers from buying a full set of new ski equipment.

"Renting is the best way to go; it's the only way to go at first," he said. "You never know if you'll like skiing, but it's great to try."

Oppegard said a beginner can progress from the instructional to the intermediate or even advanced slopes in a week.

Keep trying

"Some of them did it on our trip last year. I couldn't believe it," he said. "You've got to keep trying; the whole purpose is to go faster. The first day is the worst."

Oppegard said that although there is no official intercollegiate ski competition, club president John Schulling is planning a racing program for the club.

Oppegard said, "It will probably be a handicap thing with different flights, just for club members."

He added that if members agree, the club may expand activities to include cross country skiing.

"Cross country hasn't really caught on yet," he said. "But those who've tried it have had a good time."

Coach stresses strategy for field hockey opener

UNL field hockey coach Elizabeth Petrakis, who has 14 veteran players returning, says she expects a winning season.

The team also has eight new players and opens its season today against Concordia at 5 p.m. on the Women's Physical Education field. Friday, the team travels to Lamoni, Iowa, to play Graceland College, for their only road match this season.

In three weeks of practice, the team has been improving, but needs work on basic skills and strategies, Petrakis said. The team won 15-0 in a practice match last Wednesday against Brownell Talbot, a private Omaha school.

"We found out we need to get the players thinking strategy," she said, "instead of going out on the field and just playing."

New assistant

Petrakis has a new assistant coach this year. Tom Ekpenyong, a graduate student from Nigeria, has been coaching the team on skills and strategies, she said.

"He played in international men's competition and got in touch with me earlier this year to see if there was a men's team here," Petrakis said.

When he found UNL has no men's team, he asked if he could work out with the women's team and has been playing and coaching since, she said.

Petrakis named the starting lineup after practice Tuesday and said mostly experienced players would be starting.

Strong forwards include seniors Mary Amstrup, Sue Hansen and Mary Fransen. Defense is led by senior Beth Pillen, juniors Jean Vrbka and Deb Collins and sophomore Peg Conradt, Petrakis said.

Goal keeper Betsy Anderson should be ready to play today, despite a sprained ankle she suffered last week, she said.

Field hockey rules allow no substitutions in a game so, barring injury, the starting 11 will play the whole game.

"We might make a mutual agreement with Concordia to substitute at half-time to give more girls a chance to play," Petrakis said.

The team will have new red and white plaid kilts and white blouses for the game, she said.

Timers and scorekeepers for today's match will be from the sports officiating class. Head timer is Rhonda Rhodes, head scorekeeper is Bonnie McMahon.

Rule change

A change in rules allows a winner to be declared even in tie matches, Petrakis said. Penetration time, time spent by the offense between the 25-yard line and the goal, will be recorded and in the case of a tie, the team with the longest penetration time will win.

If penetration times are equal, she said, the team with the most penalty corners will win. A penalty corner occurs when the defensive team fouls within the striking circle or hits the ball over the end line intentionally, she explained.

This year for the first time, admission will be charged, Petrakis said. Student price is 50 cents and adult admission is \$1.

Women's season sports passes also are available. Family passes are \$25, individual passes are \$15 and student, faculty and staff member passes are \$10.

intramurals

Intramural football games tonight:

Vine No. 1

6 p.m.-Abel 10 "B" vs. Abel "B", 7 p.m.-Cornhusker Co-op "C" vs. Delta Tau Delta "C", 8 p.m.-Delta Upsilon "A" vs. Delta Tau Delta "A".

Vine No. 2

6 p.m.-Abel 11 "B" vs. Abel 5 "B", 7 p.m.-Sigma Phi Epsilon "C" vs. Phi Delta Theta "C", 8 p.m.-Phi Delta Theta "A" vs. Acacia "A", 9 p.m.-Beta Theta Pi "B" vs. Kappa Sigma "B".

Vine No. 3

6 p.m.-Abel 4 "B" vs. Abel 8 "B", 7 p.m.-Sigma Nu "C" vs. Alpha Gamma Rho "B", 8 p.m.-Alpha Gamma Rho "A" vs. Ag Men "A", 9 p.m.-Abel 9 "B" vs. Abel 7 "B".

Cather No. 1

6 p.m.-Sigma Nu "B" vs. Ag Men "B", 7 p.m.-Phi Kappa Psi "B" vs. Alpha Gamma Sigma "B", 8 p.m.-Cather 3 "A" vs. Schramm 2 "A", 9 p.m.-Sr. Dental School (A) (Rinne) vs. MASA.

Cather No. 2

6 p.m.-Alpha Gamma Rho "B" vs. Delta Tau Delta "B", 7 p.m.-Sigma Chi "B" vs. Chi Phi "B", 8 p.m.-Harper 4 "A" vs. Burr 3 "A", 9 p.m.-Phi Delta Phi (A) vs. Aspen Gentlemen.

Cather No. 3

6 p.m.-Phi Delta Theta "B" vs. Acacia "B", 7 p.m.-Triangle "B" vs. Theta Xi "B", 8 p.m.-Harper 6 "A" vs. Harper 10 "A", 9 p.m.-NROTC vs. Jots.