

Alumni fees

Validity questioned

By Lynn Silhasek

The ASUN Senate Wednesday night approved a recommendation to change the type of funding the Alumni Assoc. now receives under student fees should the association request student fee money in the future.

Under the recommendation, future student fee money marked for the association would be contained in A-1 funding, money that is appropriated according to Fee Allocations Board (FAB) guidelines.

This association this year received \$20,000 in student fees from B funding, fee money appropriated at the chancellor's discretion.

UNL Chancellor James Zumberge last spring overrode FAB recommendations that the association not receive student fee money for 1973-74.

The recommendation was made to hopefully stop duplication of programs that may be offered by both the association and other student organizations, according to a report the recommendation was contained in. The association's student fee money presently is being administered by a student alumni board and should be judged on a student to student basis, according to the report. The report was prepared by ASUN President Ron Clingenpeel and Sen. John Dobitz.

Approval of the report followed heated discussion between senators and Alumni Assoc. representatives.

Sen. Tom Owens questioned the projects the money had been used for. According to Clingenpeel's and Dobitz's report, the association's student fee money had been spent for projects including Graduate magazine and the Nutshell magazine for new and potential UNL students.

"Why should we spend our money to send unsolicited information to people we don't even care about?" Owens said.

Predictions of a future enrollment decrease at UNL make it necessary to send information to potential students "if UNL is not to become a rich boys' paradise," said Don Walters, the association's student advisory board president.

The ASUN-approved recommendation will be forwarded to Zumberge.

Mail votes to decide regent issue

By John Kalkowski

In one of the most highly contested issues of this election, the fate of Constitutional Amendment One is still undecided.

According to an Associated Press report released at 3:30 p.m. Wednesday, the student regent question hung on an eight-tenths of one per cent difference between Nebraska voters.

With 99.7 per cent of Nebraska precincts reporting, the supporting vote was 187,315. Opposition votes numbered 190,427.

After 10 a.m. today, the counting of absentee ballots began.

"For a ballpark figure, we estimate that 6,000-7,000 ballots were cast," said Ron Clingenpeel, ASUN president. Clingenpeel said he believes most of the absentee ballots are student ballots.

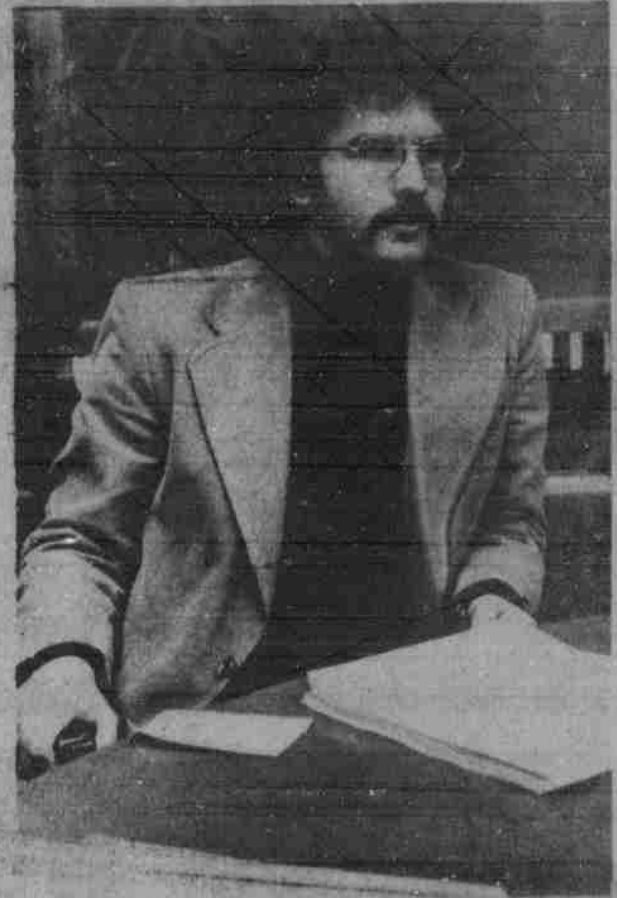
He said the absentee ballots might make a significant difference in the outcome of the election.

At an ASUN press conference Wednesday, Clingenpeel said he thinks if the amendment doesn't pass, it will come through the new Legislature in January.

"If we lose on the absentees, we will go back to the Legislature and ask them to put the question back to the people," he said.

"Nebraska has not given a clear-cut majority vote that opposes student representation on the NU Board of Regents," said Clingenpeel. He said the vote indicated a strong concern for students a consumers of education.

Jim Say, ASUN Student Rights committee chairman, said he thinks a majority of Nebraskans support student representation. According to Say, opposition votes would also include those who are favorable to the idea, but voted no because of the no-vote clause and poor wording in the amendment.



Ron Clingenpeel, ASUN president, discussing the student regent amendment.

Clingenpeel said the students, as an alternative, could go to regents and ask for representation if the amendment doesn't pass.

Sharon Johnson, first vice president of ASUN, said 300 absentee ballots were notarized in the ASUN office and an additional 150 ballots were notarized by the Nebraska Union notary public. She added that there are 10 notaries on campus and said she did not know their notarized ballot totals.

"The vote is close enough for us to be very optimistic," said Clingenpeel. Johnson added that instead of "one anxious night of waiting for the returns on the student regent amendment, there may be two or three."

Nebraska student enrollment projected to decline

By Randy Gordon

Student enrollments in Nebraska colleges and universities are projected to decline by an average annual rate of 2.11 per cent for the next six years (until 1979), according to a study for the Unicameral released this week.

That is an average reduction of 1,299 postsecondary students yearly.

The report was released by the legislative fiscal staff to the Legislative Council's Executive Board.

The study says the University system's projected enrollment decline will average 1.61 per cent a year, dropping from the 1973 high of 35,451 to a 1979 low of 32,229. The system consists of the UNL, the University of Nebraska at Omaha (UNO) and the University Medical Center (UNMC).

74% will leave

Once freshmen students enter the state's public universities, the study says more than 74 per cent of them will drop out or transfer to another college within four years.

Broken down to compare with other forms of postsecondary education, the report says: (G-graduate, D-drop out or transfer, A-need additional time to graduate.)

	G	D	A
Public universities	13.9%	74.3%	11.8%
UNL	14.0%	69.0%	17.0%
UNO	12.0%	83.0%	5.0%
State colleges	17.4%	72.2%	10.4%
Private colleges	28.6%	61.4%	10.0%
Community colleges	46.3%	36.6%	17.1%

UNL decline sharpest

UNL is projected to have the sharpest enrollment decline of the three state universities, dropping from a 1972 high of 20,736 to a 1979 low of 17,908. Only UNMC is expected to have an increase in students.

	1972	1979	Net Change
UNL	20,736	17,908	-2,828 students
UNO	13,691	12,355	-1,336 students
UNMC	1,570	1,966	+396 students
TOTAL	35,451	32,229	-2,222 students

Continued on pg. 5



Sugar Bowl lottery

Applications for student lottery tickets for the Sugar Bowl game will be available in the Athletic Ticket Office in the South Stadium Nov. 18, 19 and 20 from 9 to 12 a.m. and 1 to 4 p.m., according to ticket office spokesmen.

Each student must present his own ID to apply for a ticket, and students wishing to sit together must all be present and apply as a group. Groups may not exceed six persons. Tickets are \$9 and must be paid for with an individual personal check, cash, or money order when the application is made.

Winning lottery numbers will be published in the Daily Nebraskan, and tickets may be picked up Dec. 2, 3 and 4 at the Athletic Ticket Office. Each student must call for and sign for his own ticket, presenting his ID. Students who do not receive tickets may also pick up their payment refund at this time.