



Chubby Chef's Brawny, Deluxe

'CHALLENGER'

NOT...

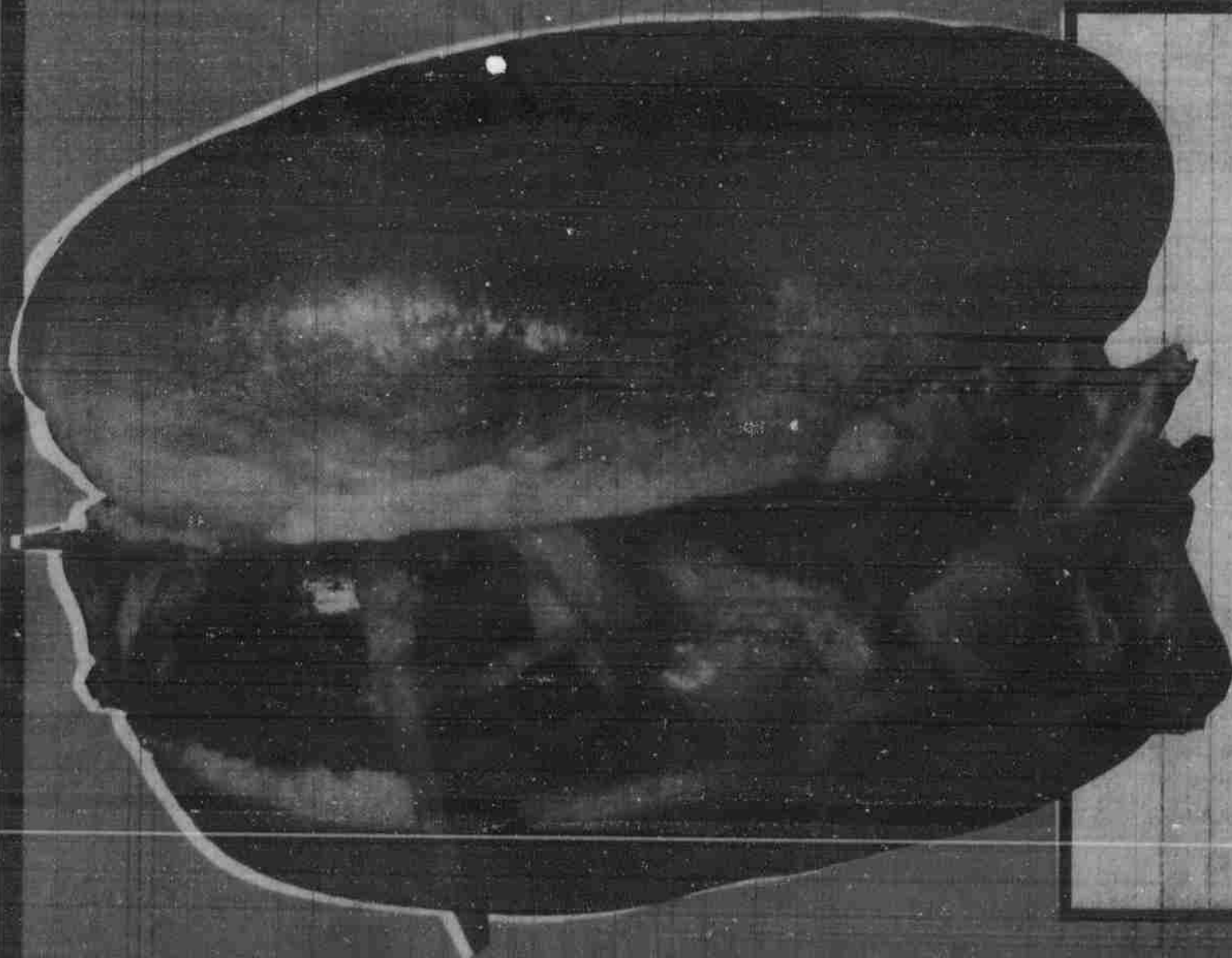
~~79¢~~ ~~69¢~~ ~~59¢~~ ~~49¢~~

JUST

39¢

FOR
39
DAYS!

Bigger than Big Mac...A Real Whopper Stopper!



Chubby Chef's CHALLENGER is Really Great!

16 BIG INCHES AROUND

The "Challenger" is almost half a foot across . . . almost half a yard around -- TWICE as big as ordinary hamburgers.

Compare the "Challenger" with 1/4-Pounders or any burger in town up to 89¢!

Chubby Chef starts with a premium gold bun (full 5 inches) . . . blankets the bottom with a big, big portion of pure Nebraska beef charbroiled to perfection . . . tops with lettuce, tomato and all the luscious burger fixins!

**That's the brawny,
deluxe "Challenger"!**

Chubbyville®

858 No. 27th... On 27th
Just North of Vine

Open Till Midnight Daily... 2 A.M. Friday & Saturday

MANAGEMENT TRAINING - HOUSEWORK - SUBSTITUTES - NEW - WOMEN
Chubbyville is growing! New job opportunities through flexible scheduling... long or short hours... full time, part time. You'll like our new discounts on student business food plan. Apply in person.