

Editor-in-chief: Mary Voboril; News editor: Jane Owens; Associate news editor: Vince Boucher.

The Daily Nebraskan is written, edited and managed by students at the University of Nebraska-Lincoln. It is editorially independent of the University faculty, administration and student body.

The Daily Nebraskan is published by the Publication Committee on Monday, Wednesday, Thursday and Friday throughout the fall and spring semesters except holidays and vacations.

Copyright 1974, The Daily Nebraskan. Material may be reprinted without permission if attributed to the Daily Nebraskan, excepting material covered by another copyright. Second class postage paid at Lincoln, Nebraska.

Address: The Daily Nebraskan/34 Nebraska Union/14th & R Streets/Lincoln, Nebr. 68508. Telephone: 402/472/2588.

calendar

Monday

8 a.m.—Speech Dept. debate tournament—Nebraska Union
11 a.m.—Alumni Assoc.
Opening Doors for Women—Union

Noon—Alumni Assoc. luncheon—Union
12:30 p.m.—Placement luncheon—Union
5:45 p.m.—Delta Sigma Pi—Union
6 p.m.—Towne Club—Union
7 p.m.—Lambda Chi Alpha—Union
7:30 p.m.—Math counselors—Union
9 p.m.—Kappa Alpha Psi—Union
9 p.m.—Kappa Psi—Union
9 p.m.—Kappa Psi pledges—Union

Crossword Puzzle

ACROSS
1. Pulls
5. Common value
8. Rodent
12. Russian sea
13. Be in debt
14. Tel—
15. Musical comedy
16. Confederate general
17. Son of Jacob
18. Groggy
20. Bay tree
22. Label
23. Thing (law)
24. Carousal
27. Small sofa
32. American author
33. Money of account
34. — Le Gallienne
35. College term
38. Allowance for waste
39. Health resort

DOWN
40. —
42. Prevents caps with gas
49. Clattering sound
50. Vandal
52. American author
53. Sharpen
54. Common abbr.
55. Grafted (Her.)
56. S-shaped molding
57. Scottish river
58. Digits
1. Scottish caps
2. Russian river
3. Sport
4. Icy
5. Speaking several languages
6. Overwhelm
7. Rod's companion
8. Appreciates
9. Supervisor

10. Dwell
11. Wicked
19. Father
21. Exist
24. Goddess of harvest
25. Fish eggs
26. Diamond, for one
28. Crude metal
29. Divergence
30. Salutation
31. Make lace edging
36. Epic poetry
37. Weaken
38. Objective
41. Note in scale
42. Reverberate
43. Plod
44. Outdoor shelter
46. Italian river
47. Head (Fr.)
48. Ogles
51. Shoshonean Indian

Average time of solution: 21 min.

CUR HASH TRAM
ATE AGIO ROBE
REVIVALS ALES
ERE KENNETH
SPRANG AIS
HOE SET POPES
INNS TEE MAMA
PEDAL ALP RIG
VAT KRAALS
PARAPET ASS
AGOG XANTHOMA
RAVE ALEE LOW
ARES SEWS SOL

Answer to last puzzle

1	2	3	4	5	6	7	8	9	10	11	
12				13				14			
15				16				17			
18				19		20	21				
			22				23				
24	25	26			27	28	29		30	31	
32					33				34		
35			36	37				38			
		39				40	41				
42	43			44		45			46	47	48
49				50	51			52			
53				54				55			
56				57				58			

Listen to the Lady Globe Scoreboard every Friday night for the scores of your favorite high school team or call 432-6806.

sponsored by **KFOR** 1240 on your dial



- MONDAY, Feb. 25**
10:30 am Film: "GROWING UP FEMALE"
12:00 noon LUNCHEON AND PANEL: Virginia Trotter, Lois Schwab, Barbara Coffey, Jacqueline Voss
Sponsored by Nebraska Alumni Association
- 8 pm ACTRESS VIVECA LINDFORS presents a dramatic journey: "I AM A WOMAN."
Kimball Hall
For ticket information, call 472-2506
Sponsored by UN-L Cultural Affairs Committee
- TUESDAY, Feb. 26**
3:30 pm FRANCES "SISSY" FARENTHOLD speaking on "WOMEN AND POLITICS"
Union
- 8:00 pm RAP SESSION with SISSY FARENTHOLD, Sponsored by Nebraska Union Talks & Topics
Sandoz Lounge
- WEDNESDAY, Feb. 27**
3:00-5:00 pm OPEN HEARING FOR WOMEN— an opportunity to express needs, exchange ideas, and initiate action
Union
Sponsored by the Chancellor's Commission on the Status of Women
- 7:00 & 9:00 pm FEMINIST FILMS \$1 admission
Sponsored by University Women's Action Group
Union
- THURSDAY, Feb. 28**
3:00-5:00 pm "LAWS: WHO NEEDS THEM?" A Panel discussion on how laws affect women.
Union
Sponsored by Y.W.C.A.
- FRIDAY, Mar. 1**
4:00 pm ATTITUDE ADJUSTMENT— giant women's rap
Der Loaf
- SATURDAY, Mar. 2**
8:30-5:00 pm "I AM WOMAN"—Workshop including panels, small group activities, theatre & dance presentations
Union
- Noon Open Forum—"WOMEN'S LIBERATION—SOME MALE RESPONSES"
Sponsored by Outreach and University Health Center

For further information on any events call 472-2841 or 472-2455

Internationally recognized stage and screen star

VIVECA LINDFORS

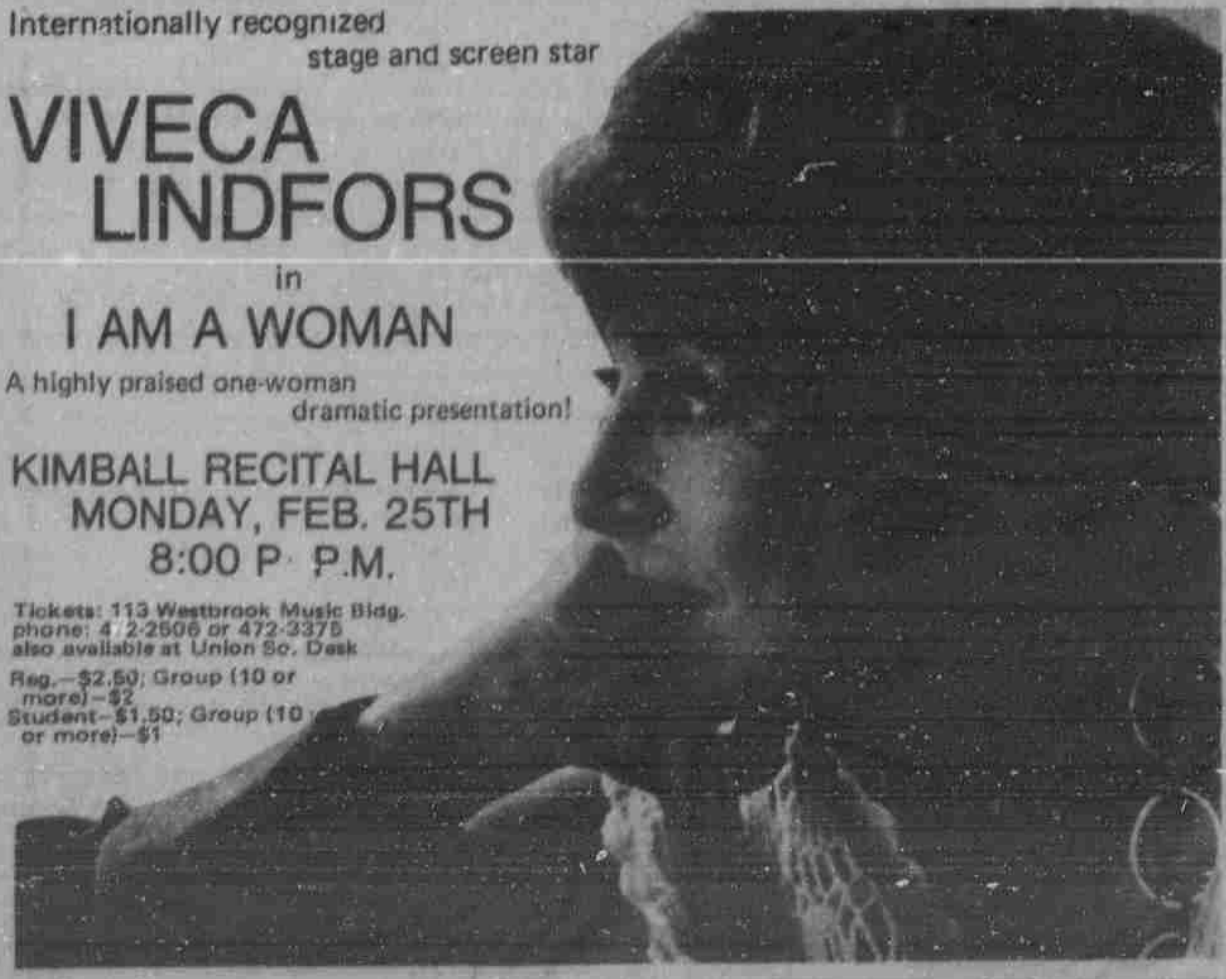
in
I AM A WOMAN

A highly praised one-woman dramatic presentation!

KIMBALL RECITAL HALL
MONDAY, FEB. 25TH
8:00 P. P.M.

Tickets: 113 Westbrook Music Bldg. phone: 472-2506 or 472-3375 also available at Union So. Desk

Reg.—\$2.50; Group (10 or more)—\$2
Student—\$1.50; Group (10 or more)—\$1



Available now & going fast. . . .



"5 STRAIGHT BOWL

"T" SHIRTS"

(football, that is)

AVAILABLE FROM ANY NU BAND MEMBER. HELP SEND THE BAND TO EUROPE THIS SPRING.

A Nebal Creation—Ideas, Inc.