

'Taming of the Shrew' to open Aug. 3

A battle of the sexes opens on August 3 when the Repertory Theatre presents William Shakespeare's "The Taming of the Shrew".

The battle is between Kate, a hot-tempered and strong-willed woman, and Petruchio, a young man who wants to marry her in order to receive the large dowry her father, Baptista, is offering.

Baptista, played by Steve Sheetz, Pensacola, Fla., marries off Kate, played by Susan Baer of Lincoln against her will. And Petruchio, played by Carl Beck, Oklahoma City, Okla., is left with the task of persuading Kate to fall in love with him. However, Kate does not persuade easily.

Throughout this main plot twists a subplot involving Kate's beautiful and flirtatious sister Bianca, played by Stephanie Black, South Bend, Ind.

Unlike Kate

She also is of marriageable age, but unlike Kate, has many suitors. The competition is so tough, in fact, that her suitors do rather peculiar things in order to try to win her hand.

Director Tice Miller said he made several changes from the traditional Shakespearean production. Miller said the play would begin with an induction and end with an epilogue, a device used during the Elizabethan period.

The induction is actually another separate and short play which introduces the main play by making it seem like a dream that the audience is seeing. The play then is tied together with a closing scene.

Miller also said the most vague and archaic language was replaced. And at the end of the play Kate would not seem as suppressed nor Petruchio as domineering as in some

renditions, according to Miller.

Jugglers and acrobats

The audience will be entertained between scenes by jugglers and acrobats, he said.

The other cast members for "Shrew" are: Donavon and Betty Diez, Lincoln; Roger Johnson, Omaha; Bill Mrkvicka, Ravenna; Mitch Mohanna, Cairo; Dave Bell, Charlottesville, Va.; Marcus Armstrong, Bellevue; Mark Peters, Council Bluffs; Randy Oglesby, Charlottesville, Va.; Roni Gallion, Reno, Nev.; Cindy Wallis, Evansville, Ind.; Terri Furman, Lincoln; Kim Grabowski, Lincoln; Jim Unger, Lincoln, and Steve Braden, Lincoln.

The production crew includes: Tice Miller, director; David Bell, assistant director; Carolyn Hull, director's assistant; Steve Sheetz, music director; Fran Brassard and Joy Butler, costume designers; Nancy Myers, setting designer; Jerry Lewis, lighting designer, and Muriel Herzog, dramaturgy.

'Shrew' alternates

"The Taming of the Shrew" will alternate in performance with two other plays,

"Company" and "What the Butler Saw," throughout the summer.

The cast also will be giving performances of "Shrew" in Grand Island, Kearney, Broken Bow and McCook during the first week in September. A performance in another city, not yet decided upon, is being planned.

Season membership tickets

are on sale for \$6 which will entitle the buyer to see all three plays. All general admission tickets are \$2.50. Group rates are available for groups of 20 or more.

Box office hours are from 1 to 9 p.m. Tuesday through Sunday until September 1. The box office telephone number is 472-2073.

36th Annual United States Roller Skating Championship

July 31-August 11

Pershing Auditorium

8 a.m.-5:30 p.m. eliminations \$2.00

7:30 p.m.-11 p.m. finals \$2.00

All Day combination \$3.00

tickets

Take advantage of this unique opportunity to witness the nation's top roller skaters compete in figures, freestyle, dance and speed skating events. Come and enjoy this excellent entertainment for the entire family!



Kate (Susan Baer) scolds sister Bianca (Stephanie Black) in the Repertory Theatre's production of "The Taming of the Shrew."

PLAZA THEATRES

477-1234
12th & P STS.

PLAZA

1

The Whitehouse, entangled in scandal and controversy!



Daily at 1:30, 4, 6:30 & 9 P.M.

PLAZA

3

Today at 1:45, 3:30, 5:15, 7:15 and 9:15.



The Legend of Boggy Creek

A TRUE STORY
THE STORY OF THE 'FOUKE MONSTER'

PLAZA

2

At 1:30, 3:30, 5:30, 7:30 and 9:30.

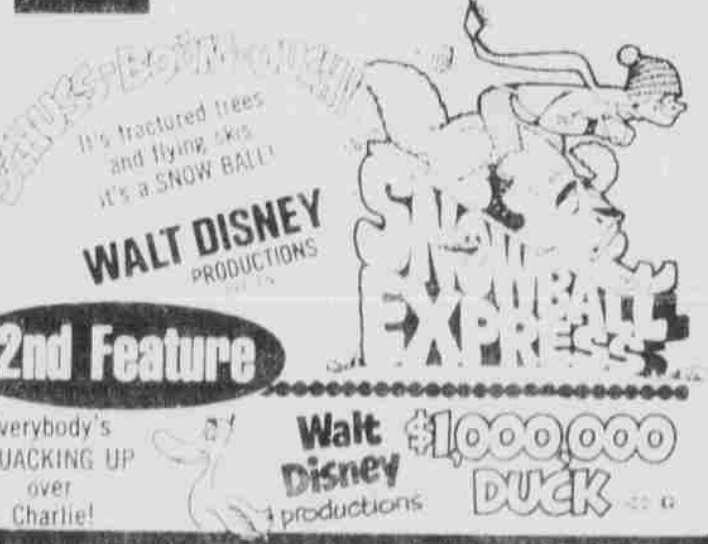


The Directors Company presents
FRAN O'NEAL
"PAPER MOON"
PG

PLAZA

4

'Express' at 1:35, 5, 8:30. 'Duck' at 3:15 and 6:45.



2nd Feature

Everybody's QUACKING UP over Charlie!

Walt Disney PRODUCTIONS
\$1,000,000
DUCK

FREE PARKING AFTER 6 P.M.: Rampark, 12th & P; Autopark, 13th & Q; Reinvesco Lots at 12th & P & 12th & Q. Free parking at Cooper/Lincoln anytime.

COOPER/LINCOLN
54th & O STS. 434-7421

In Full Theatre Stereo! Daily at 7:30 & 9:30. Sat. & Sun. matinees from 1:30.

LET THE GOOD TIMES ROLL

A Multi-Screen Re-Creation of the 50's!

FULL THEATRE STEREO!

NEBRASKA UNION

lower level