

Summer Hours

NEBRASKA UNION

Building Hours
June 11-August 24

Weekdays 7:00 A.M.-10:30 P.M.
Saturdays 9:00 A.M.-6:30 P.M.
Sundays 2:00 P.M.-10:30 P.M.

Note: On Saturdays and Sundays the Nebraska Union will be operating in the South Portion of the building only. Please use the R Street entrance.

LIBRARIES

The Undergraduate Library, Nebraska Hall, is the newest of the twelve library units and is also the location of the Children's Literature, Curriculum, and elementary and secondary textbook collections. Love Library, Law Library, and the C. Y. Thompson Library on East Campus are the three other major library units. For library tours or instruction in library use, contact Kay Crawford, Love Library 204, Extension 2519.

Library Hours:

Monday-Thursday 7:30 A.M.-10:20 P.M.
Friday 7:30 A.M.- 4:50 P.M.
Saturday 8:00 A.M.- 4:50 P.M.
Sunday 5:00 P.M.-10:20 P.M.
(July 4—closed)

SHELDON MEMORIAL ART GALLERY

10:00 A.M.-10:00 P.M. Tues.*
10:00 A.M.-5:00 P.M. Wed.-Sat.
2:00 P.M.-5:00 P.M. Sun.
Closed Mon. and July 4
*10:00 A.M.-5:00 P.M. Tues., through August
Photographs by Michael Di Biase, June 5-30
Sculpture by Susan Wright Eckenwalder—Art Shop, June 12-July 8
A Decade of Acquisitions, June 1-30
"The Fifty States," photoscreens by Larry Stark, July 3-29
Ceramics by Marshall Dixon—Art Shop, July 10-August 5
Showing of "Civilisation" (No Charge)

Tuesday, June 12 and Sunday, June 17

PARTS 1 & 2 — "The Skin of our Teeth" and "The Great Thaw"

Tuesday, June 19 and Sunday, June 24

PARTS 3 & 4 — "Romance and Reality" and "Man—the Measure of all Things"

Tuesday, June 26 and Sunday, July 1

PARTS 5 & 6 — "The Hero as Artist" and "Protest and Communication"

Tuesday, July 3 and Sunday, July 8

PARTS 7 & 8 — "Grandeur and Obedience" and "The Light of Experience"

Tuesday, July 10 and Sunday, July 15

PARTS 9 & 10 — "The Pursuit of Happiness" and "The Smile of Reason"

Tuesday, July 17 and Sunday, July 22

PARTS 11 & 12 — "The Worship of Nature" and "The Fallacies of Hope"

Tuesday, July 24 and Sunday, July 29

PART 13 — "Heroic Materialism"



**LYNN
DANCE
PHOTOS
STUDENT
UNION
JUNE 11
JULY 6**

RALPH MUELLER PLANETARIUM

Summer Sky Show Schedule
Sky shows presented June 1 to August 31 at the following times:
2:45 P.M. Mon.-Fri.
2:30 P.M. and 3:45 P.M. Sat., Sun. and Holidays
Sky shows will be:
April 7-June 2 "Voices from the Sky"
June 3-August 22 "Thunderstorm!"
August 23-September 28 "Prairie Nights"
Admission charge: 35¢ Students, 75¢ Adults

MUSEUM

8:00 A.M.-5:00 P.M. Mon.-Sat.
1:30-5:00 P.M. Sun. and Holidays
Admission is free.
Demonstrations of Ceres the "Transparent Woman"
10:30 A.M. and 2:00 P.M. Sat.
2:00, 3:00 and 4:00 P.M. Sun. and Holidays
3:45 P.M. Mon.-Fri., June 1-September 1

CRIB

Fountain-Grill
Weekdays only 7:00 A.M.-5:00 P.M.
South Crib and Vending
Weekdays 7:00 A.M.-10:30 P.M.
Saturdays 9:00 A.M.-6:30 P.M.
Sundays 2:00 P.M.-10:30 P.M.

HARVEST ROOM

Weekdays only
Coffee Hour 9:00 A.M.-11:00 A.M.
Lunch 11:00 A.M.-1:15 P.M.

COLONIAL DINING ROOM

Weekdays only
Waiter Service
Lunch 11:30 A.M.-1:15 P.M.

Largest inventory
of art supplies in Lincoln!

DISCO
Art Supply
LINCOLN'S NEW ART STORE

EVERYTHING FOR THE:

- STUDENT
- Artist
- Engineer
- Draftsman

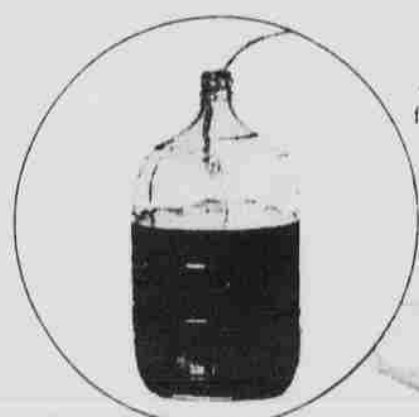
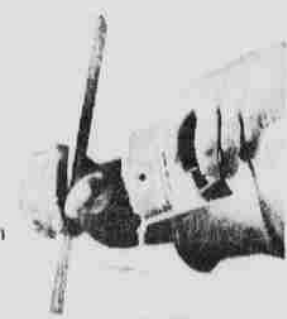
217 North 11th Street
Lincoln, Nebraska 68501
Phone 432-1888

How to make Wine

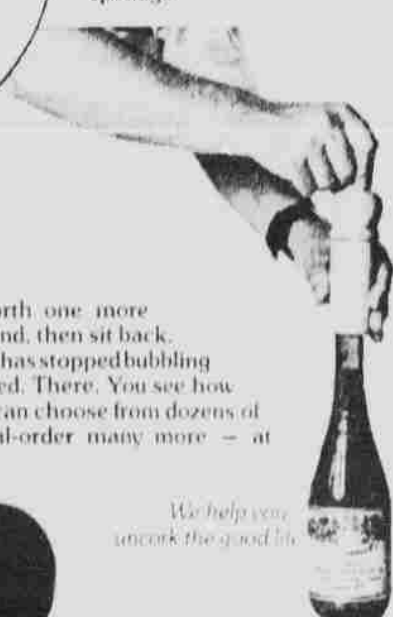


1. Wine is surprisingly easy to make. All you need is one of our basic kits, sugar, and mixing instructions. We recommend Wine Art starter kits for beginners. Everything you need is inside.

2. Sterilize the primary fermentor (the big pail), then mix the ingredients according to your recipe. Sprinkle in the wine yeast and cover the fermentor with the plastic sheet included in your kit. Fermentation will begin in 12 to 36 hours.



3. Stir your must daily. Three to five days after fermentation starts, syphon into your secondary fermentor (included in kit). This syphoning leaves sediment behind. It also moves your must to an air-proof container to prevent spoilage.



4. Syphon wine back and forth one more time, leaving sediment behind, then sit back. Let nature do her work. When wine has stopped bubbling (fermenting) it's ready to be bottled. There. You see how easy it is to make wine? And you can choose from dozens of wine concentrates — and special-order many more — at Wine Art!



Wine Art

433 So. 13th Street 475-7580

AUTHENTIC INDIAN JEWELRY

Increasing appreciation of different craftsmanship has discovered the beauty of American Indian Handicrafts. The Navajo and the Zuni Tribes in particular have developed incredibly fine and intricate jewelry, fashioned with Turquoise and Silver. Both as art, and artifact, these items deserve more than a casual look.

These pieces of Jewelry will outlast any fashion craze. Raggedy Ann's Antique Shop is proud to announce its selection of Navajo and Zuni Jewelry individually purchased by representative, Peggy Green, in Gallup, New Mexico, the Indian Traders Capitol of the World.

RAGGEDY ANN'S ANTIQUE SHOP
1527 No. Cotner 434-0456