

Faculty Senate

Continued from page 1

Zumberge told the 200 people at the meeting that he will recommend to the regents five ways to avoid the debt. The recommendations must be approved by the board before they can go into effect.

The recommendations include:

- asking the Legislature for a \$248,000 deficit appropriation;
- immediate spending of \$274,000 in reserve overhead grant money;
- saving \$208,000 by not filling vacant faculty and staff positions;
- reducing operating expenses by \$117,000 and;
- saving \$80,000 in financial aid programs.

The savings from scholarship money will not affect those students already on scholarships or grants, Zumberge said. The \$80,000 saving will result from a lower enrollment of scholarship students this year, he explained.

The \$274,000 overhead grant money that will be spent usually is held in reserve for one semester, he told the senate. The money is given to the University to cover the indirect costs incurred when the school is doing grant research, he said. The indirect costs include things like building heating and maintenance, he said.

Zumberge assured the faculty that the reduction in operating expenses does not include cutting salaries. He said less money

will be spent on items such as travel expenses and paper.

He said the University will ask the Legislature for only enough money to cover losses incurred through change in the state's residency law and the subsequent loss of nonresident tuition money.

"I believe the \$248,000 request is entirely justified," he said. "This part (of the deficit) is not the fault of the University."

Paul Olson, English professor, and Zumberge agreed that the University should develop a better prediction process.

But, the Chancellor added, "I don't think there is any way we can get a handle on or predict the external factors" which might affect enrollment.

When questioned, Zumberge said there might be an excess in some areas of the University budget, but money cannot be transferred from one account to another to cover the projected \$927,000 debt.

"It's like having five bank accounts for the different activities of the University," he said. "We can add to or withdraw from any of the accounts, but because of state law we can't transfer money from one account to another."

He said the deficit will be in the account tuition money goes into.

In other business the senate by voice vote rejected an amendment which would have changed the proposed final examination schedule. The amendment, proposed by Desmond Wheeler, professor of chemistry, would have lengthened the current five day final exam period to seven days.

short stuff

Advent services

The first of a series of four Advent services to celebrate the coming of Christmas will be held tonight at 9 p.m. at the Wesley House, 640 N. 16.

Union committees

Interviews for Nebraska Union Program Council committee chairmen will be held Saturday, December 9, in the Union. Interested students may get information on the chairmanships from the Program Office, Rm. 128, Union. Committee chairmen will be selected by the new UPC named last week. New UPC members include: Dave Pankonin, Scott Greenwood, Greg Sutton, Cathy Cabbage,

Pam Groat, Jay Wagener, Pat Olson, Randy Beam and Roxann Pankonin.

Economic roundtable

The College of Business Administration is sponsoring a business and economics roundtable which will feature Yung-Ping Chen, UCLA economics professor. The meeting will be in the faculty lounge, third floor, CBA today from 2:30-4:30 p.m.

Feminist author Friedan to speak on campus

Nationally known feminist Betty Friedan is scheduled to speak at 3:30 Thursday in the Nebraska Union.

Friedan is the author of the best seller, *The Feminine Mystique*, and is one of the founders and a past president of the National Organization of Women.

Friedan also will conduct a discussion at the Selleck Hall multipurpose room at 7 p.m.

Friedan was a 1972 delegate to the national Democratic Convention in Miami. She has recently caused a stir within the women's movement by calling feminists Bella Abzug (Congresswoman from New York) and Gloria Steinem "female chauvinists waging class warfare against men."

daily nebraskan

Editor-in-chief: Jim Gray. Managing Editor: Tom Lansworth. News Editor: Randy Beam. East Campus Editor: John Russnogle. News Staff: Reporters: Bart Becker, Steve Arvanette, Michael (O.J.) Nelson, Debbie Fairley, A.J. McClanahan, Sara Schwieder, Shelly Kalkowski, Bob Shanahan, Chris Harper, Jane Owens, Adella Wacker, Ron Clingenpeel. News assistant: Mary Lee Holdt. Fine arts staff: Larry Kubert, Carolyn Hull. Sports editor: Jim Johnston. Sports writers: Kim Bell, Steve Kadel. Magazine coordinator: Bill Ganzel. Photography chief: Dan Ladely. Photographers: Bill Ganzel, Gail Folda. Night news editor: Steve Strasser. Senior editors: Cheryl Westcott, Dave Downing. Copy editors: Mary Voboril, John Lyman. Circulation: Kelly Nash, Jim Sheridan, Charlie Johnson. Staff artist: Greg Scott. Editorial assistant: Vicki Horton. Columnists: Michele Coyle, John Vihstadt. Subscriptions: John McNeil. Dispatch: Larry Grill.

Business Staff, Coordinator: Jerri Hausler. Ad manager: Bill Carver. Assistant ad manager: Jeff Aden. Accountant representatives: Robert Flood, Vicki Bagowski, Craig McWilliams, Mary Dorenback, Terri Adrian, Mitch Mohanna, Larry Swanson, Doreen Droge, Kris Collins, Barbara Chaney, Susan Lanik. Account artist: Sarah Start. Receptionist: Kathy Cook.

The Daily Nebraskan is written, edited and managed by students at the University of Nebraska-Lincoln and is editorially independent of the University faculty, administration and student body.

The Daily Nebraskan is published by the CSL subcommittee on publications Monday, Wednesday, Thursday and Friday throughout the school year, except on holidays and vacations.

Second class postage paid at Lincoln, Nebraska 68508. Address: The Daily Nebraskan/34 Nebraska Union/Lincoln, Nebr. 68508. Telephone 402/472/2588.

Put on a happy face at visioncenter.



Complete eyeglass service for choosy people.

If you want the best there is in eyeglasses, we'll make you happy! With a frame selection that's out of this world! Gold-filled wire rims, high-flying aviators, rounds and squares. All shapes, sizes, and colors. Plus specially designed "Big-Red" frames... with a case to match. Everything at down to earth prices. We give professional examinations, fill doctors' prescriptions, copy present lenses, fit you with contact lenses. Satisfaction guaranteed! Come in and put on a happy face!

PEARLE **VISION center**

Lincoln

1132 "O" Street Tel. 432-7583

152 Gateway Mall Tel. 434-7416

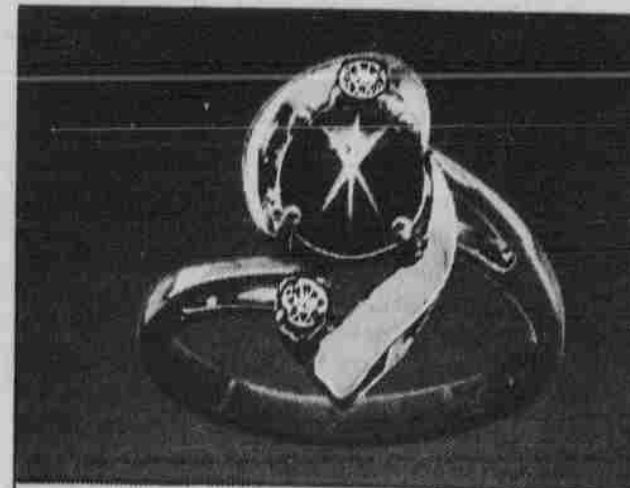
EXPERIMENT

Are you a "standard donut" eater? Do you buy only plain or glazed donuts? Well, there's nothing wrong with that. But we've got 45 different varieties of donuts. Sugared, chocolate, fruit-flavored, honey-dipped, cream and jelly filled, frosted-and many others. Why not experiment a little? We've got the donuts if you've got the time. Try a few different kinds of donuts. At Mister Donut.



5121 O STREET
488-5118

ZALES HAS A RING FOR EVERY GIFT OCCASION!



Ladies' blue Royal Star, ONLY 2 diamonds, 14 Karat gold \$75

ZALES

JEWELERS
We've got the whole world working for you.

Five convenient ways to buy: Zales Revolving Charge • Zales Custom Charge • BankAmericard • Master Charge • Layaway

Illustration Enlarged