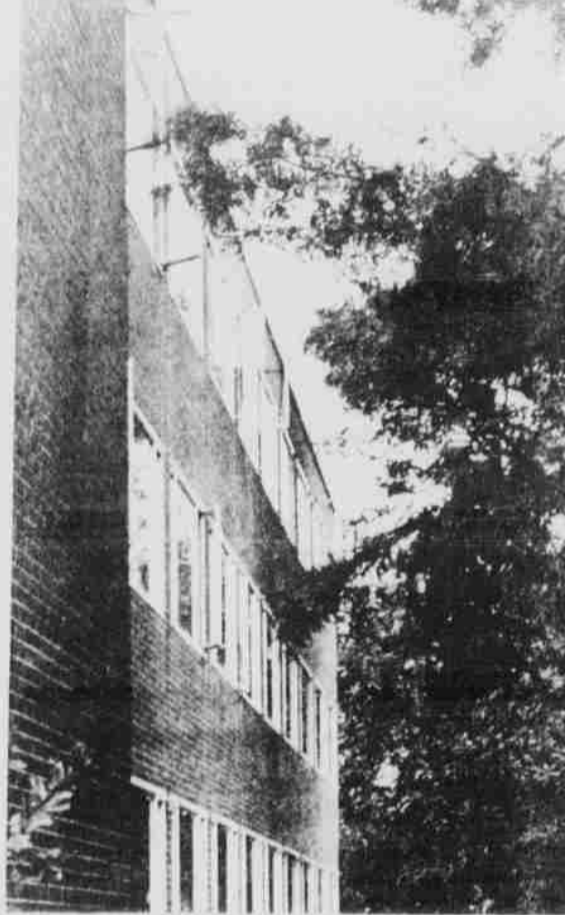


What's wrong with East Campus dorms . . .



The chairs that are supposed to go with desks in the dorms don't fit under the desks. Students have to lean forward a little to study. At least one student has sawed off the legs to get his chair to fit.



Instead of being recessed back, the windows in Burr Fedde were built on the same plane as the outside wall. As a result, when it rains, they leak.



Cracking plaster is common, as here in a Burr utility room.

