



Conservationist Brower... "If we don't change our course, we won't have to worry about the 1980's."

Brower: values need change

People have forgotten where the real show is in their world, said conservationist David Brower Tuesday afternoon.

In a Nebraska Union Centennial Room speech, Brower said that technology and its products are receiving people's attention instead of nature.

Brower, a speaker in the 1971 Montgomery Lecture Series, said that society has glorified man's inquisitiveness and quest for technological progress. He indicated that a change in values is a must if the world is to see the 1980's.

The president of Friends of Earth conservationist group, Brower related the water, air and land resources of the planet to a drop of water, an even smaller water droplet and a speck of dirt on the shell of an egg.

THESE FEW resources are the only things that make the earth unique from the moon," he said. Brower also pointed to the brief length of time it has taken man to impair his organic resources, compared to the total time of man's existence on earth.

"If the history of the earth were a 25,000 mile journey around the earth, the final six feet of that journey would be equivalent to the time span of the industrial revolution to the present," he said.

America's increasing

demand for natural resources has not only had ecological affects but has alienated friends it once had in the world. Brower noted that the United States has six per cent of the world population, but it consumes 60 per cent of the natural resources in the world.

The technological search for more and more energy is the biggest mistake the United States is making, according to Brower. He cited a need for learning to use less energy in the future, instead of trying to find more energy sources.

"IF WE DON'T change our course in the 70's, we won't even have to worry about the 80's," Brower noted. Population control is a starting point in the demand for less energy because the world will need to get by with fewer people to survive.

In citing solutions to some of these problems, Brower leveled much of the blame on individual Americans. He presented several proposals which have been brought up by elected officials to deal with environmental problems.

Brower then asked his audience whether anyone had bothered to write his senator, congressman, or the President concerning their support for these measures. One hand was raised.

"It is the citizen's obligation to write these people, a voice from the public is necessary.

People just haven't tried to rid our country of these problems," he said.

ISSUE: Implementation of PACE Proposal

KNOW THE ISSUE AND VOTE

WEDNESDAY, APRIL 7
 SPRING GENERAL ELECTION
 ASSOCIATION OF STUDENTS OF THE
 UNIVERSITY OF NEBRASKA (ASUN)

The following issue will be on the April 7 Spring ballot:

IN FAVOR:

- PACE Committee Plan (refundable after tuition payment)
- Regents' Committee Plan (deductible from tuition payment)

The PACE Committee plan and the Regents Committee plan are two different ways of implementing the PACE proposal. The Pace Program of Adult Commitment to Education proposed calls for a special addition to student fees amounting to \$5.50 per student per semester and \$1.75 per student per summer session. The amount this amount will be used to provide scholarship funds for low income students which will be administered by the Office of Scholarship and Financial Aid. The Board of Regents in March is agreed to implement for a one calendar year trial period the plan which receives a majority vote for a referendum to be held at the Spring General Election.

PACE COMMITTEE PLAN
 A vote in favor of the PACE Committee plan means you are voting for a plan by which the PACE fee of \$5.50 or \$1.75 depending on the semester will be refundable after the tuition payment. This time, the amount you pay or tuition will include the PACE fee. If you do not wish to participate in the PACE program, you may obtain a refund at a later date. It will be your decision whether to obtain your refund by mail or in person.

REGENTS COMMITTEE PLAN
 A vote in favor of the Regents Committee plan means you are voting for a plan by which the PACE fee of \$5.50 or \$1.75 depending on the semester can be deducted from your tuition payment. With this plan, your tuition bill will be, as of 10/1/71, the amount of tuition and fees. It will be noted that the PACE fee is included. If you do not wish to participate in the PACE program, you can select that amount (\$5.50 or \$1.75) from the total when you make your payment.

Agriculture and Home Economics students vote at East Union from 8:00 a.m.-5:00 p.m. and then at City Union Lounge from 5:00 p.m.-8:00 p.m.
 All other students vote at City Union Lounge from 8:00 a.m.-8:00 p.m.

Rod Franz AND Assc.

offers-

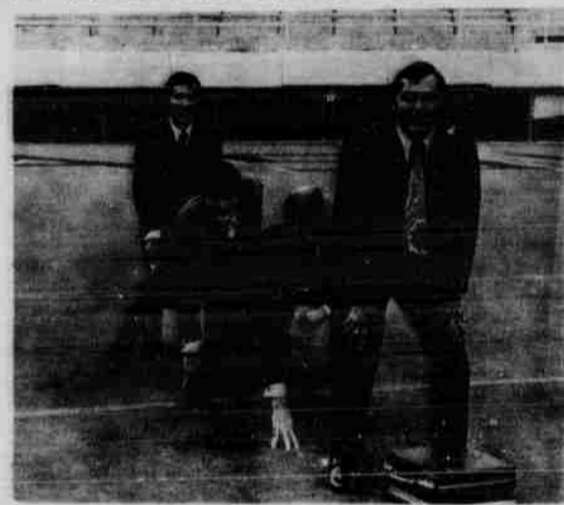
TOTAL COMPUTERIZED SERVICES

to assist you with:

- Life Insurance * Mutual Funds-
- Disability Income * Real Estate

for more information clip out and mail to:

Rod Franz & Assoc.
 525 Sharp Bldg.
 Lincoln, Nebraska 477-1261 or 477-1262



name _____ address _____

TRANSCENDENTAL MEDITATION

AS TAUGHT BY
MAHARISHI MAHESH YOGI



TRANSCENDENTAL MEDITATION IS A NATURAL SPONTANEOUS TECHNIQUE WHICH ALLOWS EACH INDIVIDUAL TO EXPAND HIS MIND AND IMPROVE HIS LIFE.

Introductory Lecture

Wednesday, April 7, 501 Bldg, Room 101
 Thursday, April 8, University High Aud.

discuss...
what are you doing to oppose the WAR?
 Meeting at UMHE
 Wed. April 5, 1971, 7pm
 -everyone welcome-
 dan ladely and ron kurtenbach
