

People expect miracles from drugs

The problem of drugs is a misnomer, according to the Director of the Harvard University Health Center. The real problem is people.

"I subscribe to the theory that we are an overmedicated society," Dr. Dana Farnsworth said. "We are trained to expect miracles from taking drugs."

Farnsworth explained that many adults use as many as six drugs a day, including caffeine, alcohol, tobacco and sleeping pills.

Farnsworth's definition of a drug includes "any chemical substance which people take with the idea that it will change a bodily function."

"It's easy to see how young people have grown up to see that drugs can solve anything if they have the right prescription," Farnsworth said.

Farnsworth spoke at a university convocation sponsored by the University of Nebraska Health Center.

On drug control he said, "Society has a right to protect an individual who might inflict harm on himself. I feel that a person doesn't have the right to end his own life."

Drugs may destroy the freedom of choice before it is



Dana Farnsworth

ever exercised," he said. "This is why there is concern when children of 10, 11 and 12 years of age take drugs."

The problem of drugs has grown to the extent that in each new group of students and graduate students the percentage of them using illegal drugs has risen, according to Farnsworth.

"In some grad schools this wouldn't make any difference," he said, "but in medical schools it would."

"In Harvard Square some people can get any (drugs) they want at any time of the day," Farnsworth said, "I couldn't get any to save myself, simply because I am a member of the establishment."

Farnsworth, the chairman of the Council on Mental Health of the American Medical Association said drugs are used for several reasons.

He listed the use of drugs as an escape from mental pain, as a symbol of social currency, "a coming of age rite," and to satisfy the desire of experimentation.

"Whatever else is needed to acquire wisdom, drugs are not

a part of the answer," Farnsworth said. "If you don't

matter, it doesn't matter if you take marijuana or not."

Delta Upsilon picks '70 officers

Delta Upsilon has elected Joe Nespor of Fairbury president for 1970. Mick Moriarty of Omaha is vice-president and Casper Greenwalt of North Platte is secretary.

Other officers include: Paul Kratz, Willmette, Ill., chapter relations; Randy Lemke, Bloomfield, rush chairman; Bruce Cladeon, Wisner, steward; Don Claar, Holdrege, house manager; Mack Enebach, Omaha, pledge trainer; and Roger Lee, Omaha, social chairman.

Placement Interviews

DETAILED INFORMATION MAY BE OBTAINED AT THE PLACEMENT OFFICE, NEBRASKA UNION 230.

Monday, March 2

CHICAGO, BURLINGTON & QUINCY railroad company. B.S. — C.E.

CONSUMERS PUBLIC POWER DISTRICT. B.S. — E.E., C.E., M.E., Home Ec.

QUAKER OATS COMPANY. (see bulletin board)

ELMER FOX & COMPANY. B.S. — Acctg.

FIRESTONE TIRE & RUBBER COMPANY (Sales Program Schedule and Auditing). B.S. — Bus. Adm., B.A. — Liberal Arts (See Attached Disciplines on Interview Announcement forms on bulletin board)

HARRIS TRUST & SAVINGS BANK. B.S., M.A., M.B.A., J.D. — Business Related Majors; Summer Work — Grad.

UNITED STATES DEPARTMENT OF LABOR. B.S. — B.A., M.S. — M.A., M.B.A. — econ., Stat., Pol. Sci., Ind. Rel., Sociol., Public Adm., and Govt. Bus. Adm.

NORTHERN NATURAL GAS CO. (TECHNICAL). B.S., M.S. — C.E., Sh. E., E.E., I.E., M.E.; SUMMER WORK: Jrs., Grad. — Ch. E., C.E., E.E., I.E., M.E.

NORTHERN NATURAL GAS COMPANY (NON-TECHNICAL). B.S., B.A., M.S., M.A. — Acctg., Comp. Sci., Data Proc., General Business (with 12 hrs. Acctg. & 9-12 hr. Applied Math.) M.B.A. — with undergraduate in Acctg. or Applied Math.; SUMMER WORK: Jrs., Grads. — Acctg.; Jr. — Home Ec.; B.S., M.S. — Applied Math., Finance (with 18 hrs. Acctg.)

PACIFIC MUTUAL LIFE INSURANCE COMPANY. B.S., M.S. — Math.

UNITED STATES DEPARTMENT OF AGRICULTURE (EAST CAMPUS). B.S., M.S., M.B.A. — Engineering (Agr. or Civil), Soil Conservation, Geology, Range Conservation, Soil Science, Agr. Econ.; SUMMER WORK: Sps., Jrs., Sr., Grad.

THE WESTERN AND SOUTHERN LIFE INSURANCE COMPANY. B.S., M.S., M.A. — Math or Act. Sci. majors; SUMMER WORK — Jrs., Srs., Grad. — Math or Act. Sci. majors.

WOLF AND COMPANY. CPA's. B.S. — Acctg.; SUMMER WORK: Acctg.

Tuesday, March 2

THE FIRESTONE TIRE & RUBBER COMPANY. (same as before)

THE GOODYEAR TIRE & RUBBER COMPANY — AKRON (CORPORATE). B.S. — M.E., Ch. E., C.E., E.E., I.E., Chem.

THE GOODYEAR TIRE & RUBBER COMPANY (INDUSTRIAL PRODUCTS SALES). B.S. — Mktg., Econ., Acctg., M.E., C.E., Ag. E., Ch. E., Chem.

GEORGE A. HORMEL & COMPANY. B.S., B.A. — Animal Sci., Agr., Math.,

Chem., Bus. Adm., Arch. Engr., M.E., I.E., Econ., Liberal Arts, Statistics, Physics, Marketing, Industrial Management, Production Management, Acctg., M.S. — Math., Chem., Bus. Adm., Arch. Engr., M.E., Ind. Engr., Econ.

INTERNATIONAL BUSINESS MACHINES (MARKETING—SYSTEMS ENGINEERING). B.S., M.S. — Engr., Phy. Sci. & Math.; M.A. — Business; M.B.A. with both tech. and non-tech. undergraduate degrees. Limited opening for Bus. and Liberal Arts Graduates with interest in technical marketing.

INTERNATIONAL BUSINESS MACHINES (DESIGN AND DEVELOPMENT). B.S., M.S. — Elec., Mech., Indus. Engr.

INTERNATIONAL BUSINESS MACHINES (PROGRAMMING). Bachelor or advanced — any field of study.

INTERNATIONAL BUSINESS MACHINES (ACCOUNTING & ADMINISTRATION). Bachelors and masters degrees in Accounting & Finance.

KANSAS STATE HIGHWAY COMMISSION. B.S., M.S. — C.E., M.E.

NORTHERN NATURAL GAS COMPANY. (same as before)

THE OHIO NATIONAL LIFE INSURANCE COMPANY. B.S., M.S., M.B.A. — Act. Sci.

THE PROCTER & GAMBLE DISTRIBUTING COMPANY. Any business or liberal arts Majors — Sales and Sales Management

Wednesday, March 4

ARMY & AIR FORCE EXCHANGE SERVICE. B.S., B.A., M.S., M.A. — Bus. Adm. (Retail), Liberal Arts, Food Management, Acctg. & Auditing, Math and — Systems, Elec. & Mech. Engr., Architecture.

DALE ELECTRONICS. B.S. — Bus. and — Econ., E.E., M.E., Ch. E.

GETGY AGRICULTURAL CHEMICALS (EAST CAMPUS). B.S., M.S. — Agronomy, Economics, Entomology, all Agr. Degrees Quality.

THE GOODYEAR TIRE & RUBBER COMPANY (LINCOLN PLANT). B.S. — I.E., M.E., Bus. Adm.

THE GOODYEAR TIRE & RUBBER COMPANY (AKRON, CORPORATE SCHEDULE). (same as before)

INTERNATIONAL BUSINESS MACHINES (MARKETING—SYSTEMS ENGINEERING) (DESIGN AND DEVELOPMENT) (PROGRAMMING) (ACCOUNTING & ADMINISTRATION). (same as before)

J. F. PRITCHARD & COMPANY. B.S., M.S. — Ch. E., M.E., C.E., E.E.

PROCTER & GAMBLE DISTRIBUTING COMPANY. (same as before)

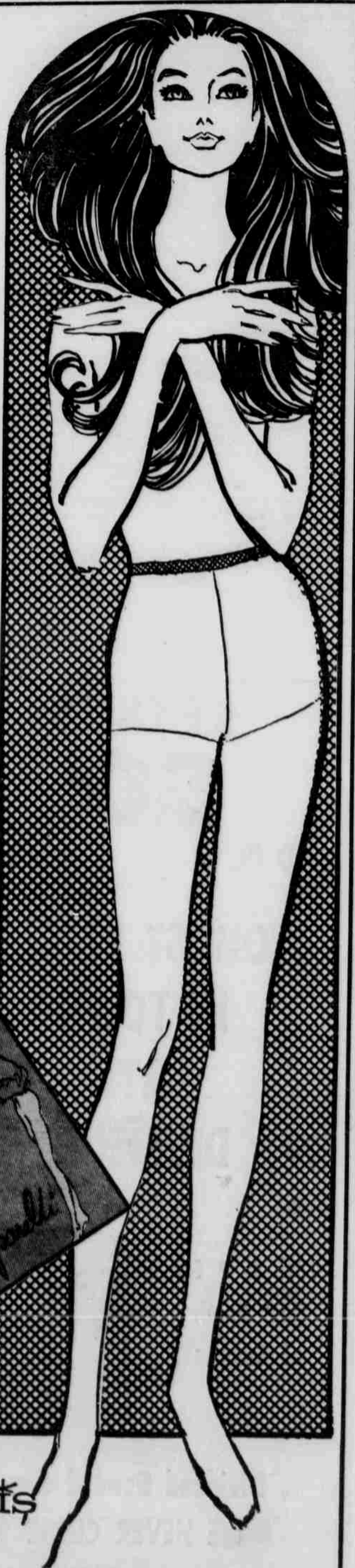
NATIONAL BANK OF DETROIT. M.A., M.B.A. — Acctg., Finance, Management.

Schiaparelli announces the new Agilon® panty hose

Stand up, sit down, stretch or bend . . . Schiaparelli's brand new panty hose of Agilon® nylon follow through on every move! You win when Schiaparelli's classic fit and quality meet Agilon's special resistance to sagging and running. Join the Schiaparelli-Agilon® team at Brandeis and earn points in budget-stretching. Sizes P, M, MT and T in your favorite Schiaparelli colors. Pair 2.50

It's easy to order! Call 477-1211, day or night.

Hosiery main floor



IBRANDEIS