

# 'Wrecker Ted' razes to the occasion

Sophomore Luther Frerichs is helping destruct a campus building and he's getting \$1.75 an hour for it.

Frerichs, a sophomore in pharmacy, was walking by the Geography Building when he saw a "Help Wanted" sign. "Wrecker Ted" Hall hired him, and now Frerichs is helping demolish the oldest structure on campus.

The Board of Regents last October 24 authorized the University to accept bids for the removal of the landmark, and the razing began January 27.

The building is in poor structural condition, and its removal has been planned for several years, said Regent Edward Schwartzkopf.

Designed in 1903 and constructed in 1906 as the University Museum, the Geography Building was completed at a cost of \$57,900.

"The flat-arch construction used in this building," said Hall, "goes back to early Roman architecture. It's a well-constructed building, but it's not too hard to tear apart."

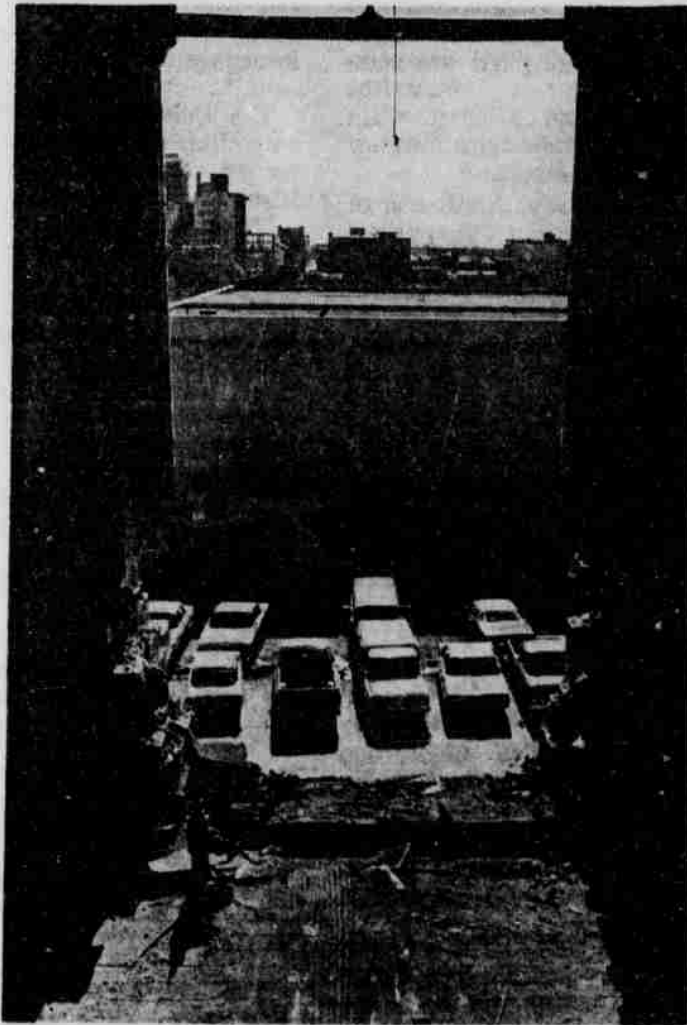
Hall, who is in charge of the razing, estimated the job would take about six weeks. Several men are assisting on the job and Frerichs said another student plans to come to work soon.

Because of its proximity to the new Hamilton Chemistry Building, heavy machinery cannot be used in the demolition.

"This is one of the reasons we are not using a crane," said Hall. "The other reason is that we can save the old beams, floor, and other materials; everybody's high on ecology these days."

"We are trying to sell the maple flooring, the beams, the two-by-four's, and doorknobs, and so on," he added.

Hall pointed out that, in its time, the building was a classic. The building had been



Photos by Barb Peters

fireproofed in an unusual way and open-hearth steel beams were used in the construction.

Fine maple floors used in the structure came from Michigan, the wrecker believes.

Original blueprints of the structure show that the main part of every floor contained an exhibition hall, with several laboratories off to the side. Eventually, however, these exhibition halls were partitioned to form classrooms.

Until 1927, the building housed the University of Nebraska Museum. Eventually the Museum moved over to Morrill Hall.

The University Police Department were headquartered in the Geography Building since the early 1950's.

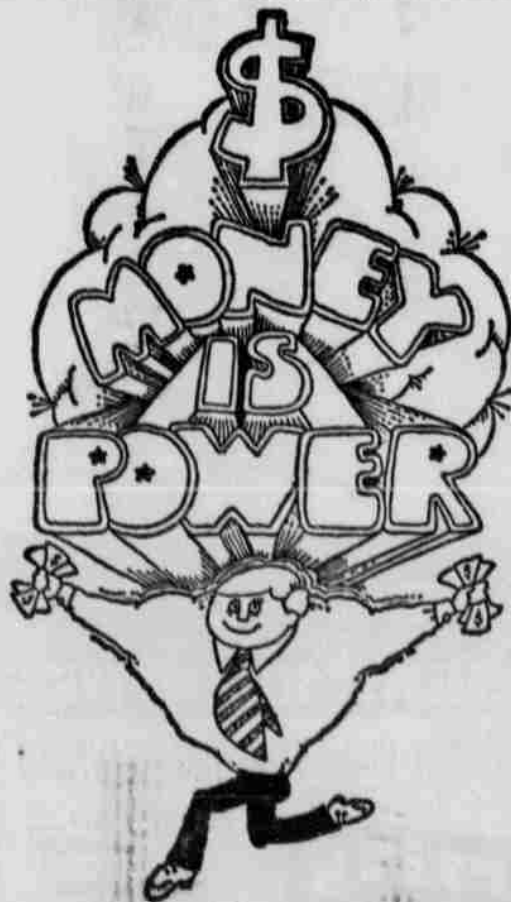
Recently, some College of

Business Administration staff members had been using some of the Geography Building for temporary quarters. They moved into their new headquarters during the fall semester and when the University Police left the Geography Building two weeks ago, the 64-year-old structure was empty.

## New home ec officers elected

Mary Lee Hunt of Cozad, a junior, has been elected president of Xi Chapter of Phi Upsilon Omicron, professional home economics honorary.

Other officers are Sharon Wolfe, Craig, vice president; Connie Johnson, Newman Grove, secretary; Janice Wallman, Beatrice, treasurer; and Susan Kopecky, David City, historian.



Money is swell stuff. It makes a party... political or social. It builds theatres for people to laugh in, houses for people to live in and churches too. It can make a better mousetrap, develop a vaccine or clear a slum. Lots of fine things are done with money and lots of young people are finding out about the excitement inherent in a banking career. □ As the largest Southern California based bank, Security Pacific is proud of its "now" atmosphere and the many young executives who make the decisions that put things in motion. □ If you would enjoy the involvement of working with a big, strong bank, we'd like to talk to you. We'll be on campus Wednesday February 11

Make your financial partner  
SECURITY PACIFIC NATIONAL BANK

An equal opportunity employer

## Tassels select new officers

A Fremont coed, Kathy Knoell, is the new president of Tassels, women's pep organization at the University of Nebraska.

Other new officers are: Paula Morris, Hastings, first vice president; Chris Seeman, Red Oak, Ia., second vice president; Ardis Grummert, Fairbury, secretary; and Beverly Toebben, Nickerson, treasurer.

Tassels is composed of sophomore, junior and senior women who work with the yell squad, Cornhusker Marching Band and Corn Cobs in the

planning of pep rallies and organizing the Kernels for football games. Tassels also assist in homecoming activities including the homecoming queen.


## Phi Mu sorority elects officers

Phi Mu sorority has elected Sharon Gerwick as president for 1970.

Other newly elected officers include Laurel Marsh, vice president; Marg Barr, secretary; Mary Samuels, treasurer.

Without your love. We're nothing

Don't resist comparison-shop Zales



DIAMOND SOLITAIRE  
\$295  
CONVENIENT TERMS AVAILABLE

ZALES  
JEWELERS

Without your love. We're nothing

We're nothing without your love.

Illustrations Enlarged

1329 "O" St.

432-3217