

Lloyd shines at NU scene . . .

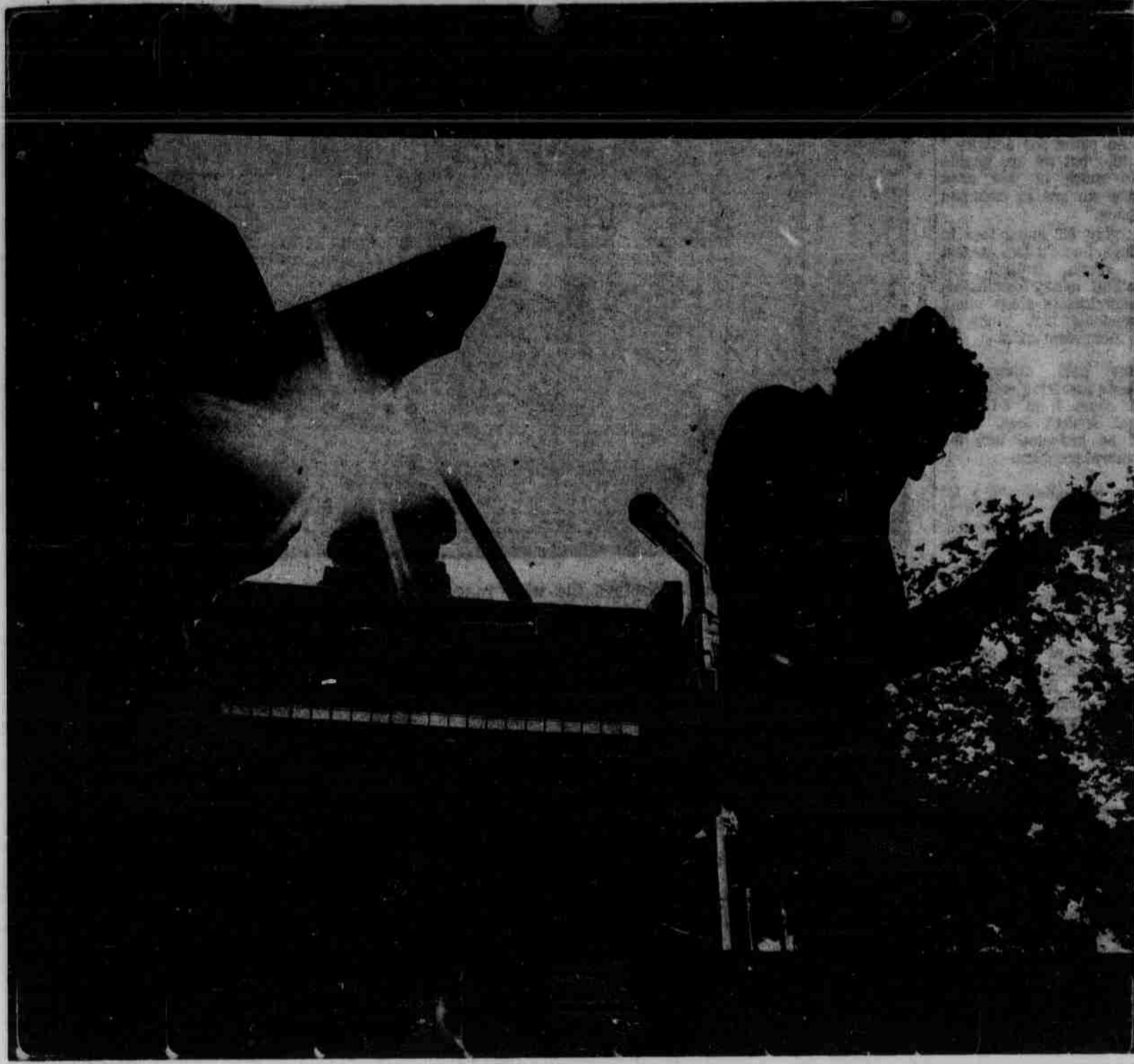


Photo by J. E. Shaw

...and warms souls

'Splinter parties' will be examined

"Splinter Parties — Will they cause wounds on the Body Politic?" is the subject of a program sponsored by Pi Sigma Alpha, political science honorary, Thursday night at 7:30 p.m., in the Union.

A panel made up of Dr. Robert Sittig and representatives of the American Independent Party, the New Party, and the Peace and Freedom Party will discuss the problem of "minor" parties and their role in 1968

and the future. DR. SITTING, Republican, will represent the viewpoint of that major party as well as that of a political scientist.

Candidates have been invited to attend and all campaign headquarters have been invited to bring literature for display.

Read
Nebraskan
Want Ads

4 & 8 TRACK
Cartridges
recorded
Sound City
432-7305 144 So. 9th

Applications due mid-October . . .

Opportunities now open for qualified students in study abroad graduate work

Opportunities are knocking on the door for students interested in studying abroad or who need financial help to complete their graduate studies.

The Fulbright Program, funded by the U.S. Government, provides grants for graduate study or research abroad. Applications for the program must be submitted to the campus Fulbright Program Adviser, Dr. Roberto Esquenazi-Mayo by October 18.

STUDENTS MUST be able to follow lectures in the language and have at least

a B-average because they will be competing on a national level, according to Esquenazi-Mayo, director of the Institute for Latin American & International Studies.

Esquenazi-Mayo said that the prospective candidate's chances for a Fulbright Fellowship have been lessened for the 1969-70 year because the amount of the grants is one-third of what it was for this year. The reductions have come about because the government desires to reduce travel overseas at this time.

Two University students, Phyllis Donaldson and

Michael Haymen, are participating in the El Colegio de Mexico program this year. El Colegio de Mexico is a small school with many high quality visiting professors, said Esquenazi-Mayo.

Applications for next year at El Colegio de Mexico will be due in March.

Other fellowships and study grants are available through the Graduate College office.

Students with intellectual promise who will be eligible to attend graduate school in the 1969-70 term are eligible for the Woodrow Wilson Fellowship. With funds from

the Ford Foundation, 100 Woodrow Wilson Fellows will be chosen in the U.S.

A Fellow receives \$2,000 for one academic year and the Foundation contributes up to \$1,000 toward graduate tuition.

THE SELECTION committees are interested in a candidate's promise as a college teacher. Candidates must be nominated by a faculty member no later than October 20.

Students working toward a Ph.D. in the humanities or social sciences who expect to complete their dissertation within four years after beginning post-baccalaureate study may be nominated by their graduate deans for a Woodrow Wilson Dissertation Fellowship.

A living stipend of \$200 per month for not more than 15 months enables the student to devote full attention to research and writing of the dissertation.

Funds from the Ford Foundation provide approximately 200 awards a year. Nominations from the graduate dean are due October 15.

The Japanese government Ministry of Education offers scholarships to research students for study at Japanese universities.

The scholarship provides for a monthly stipend, transportation, housing, tuition and fees. Applications, available through the

Graduate College, are due October 15. Applicants must have completed 16 years of education.

THE DANFORTH Graduate Fellowships are available for women who are interested in college and secondary teaching. The Danforth Foundation is interested in finding American women whose teaching preparation has been postponed and who now find themselves in the position to take graduate work.

The maximum award of \$3,000 is good for one year beginning September, 1969. All application materials are due before January 10, 1969.

The Kent Graduate Fellowships support selected persons pursuing graduate studies who are preparing for teaching or administration in colleges and universities.

The Fellowship includes tuition, fees, and living expenses for candidates who intend to obtain a Ph.D. Candidates must have the endorsement of the institution in which their work is being done and applications are due November 15.

Some 2,000 special fellowships to support predoctoral and post-doctoral study in health and health related areas are available from the National Institute of Health.

For more information about these and other fellowships or grants, contact the Graduate College, 412 Administration, or Dr. Roberto Esquenazi-Mayo, 1319 Seaton Hall.

NU too grade conscious? system expansion desired

Continued from page 1 Eighty-two percent of the students who had taken or are taking a pass-fail course felt it helped them learn without worrying about grades.

Fifty-four of the students said that requirements would not let them take a pass-fail course.

The majority of those declining the pass-fail option did so because the requirements were too strict. More than half of the pass-fail participants were dissatisfied. All but a few were disappointed because the requirements were too strict. Nearly all those dissatisfied wanted the program expanded.

Open rush gives eligible coeds chance to pledge

Any eligible woman wishing to join a sorority can now participate in open rush until the end of the year.

Rush is open to all women. It is up to the individual sororities who have not filled their quota of 90 women to rush the interested women.

To be eligible for rush, women must have a 2.2 average or have been in the upper one-half of their high school graduating class. There is a \$2.50 fee to participate in open rush.

Anyone requiring further information should contact the Panhellenic office, 335 Nebraska Union.

A surprising number of students knew very little about the program, according to the Education Committee's report.

The committee felt that the University community is too grade conscious. Ask a student on the street how he is doing in college. Will he say "Fine, I'm learning some fascinating things" or will he quote his grade point average?

The existing program is good as a first step to reform. However, if it is allowed to stop at this point, the program would be hopelessly inadequate, according to the Committee.

Other large universities have yet to implement a pass-fail system. Iowa and Michigan State are seriously

considering the program.

THE PROGRAM has achieved some popularity on the west coast however, according to Chatfield.

California Tech has adopted a policy which requires all freshmen courses to be pass-fail.

But Cal Tech is somewhat different than NU, Chatfield pointed out. It is more selective in admissions and it is a technical engineering school.

Stanford, Oregon and the University of California at Berkeley have all adopted some form of the pass-fail system.

The pass-fail system is not very widespread, according to Chatfield. He said the time when all University courses will be a pass-fail system is "a long way off."

AWS workers named; first meeting scheduled

AWS has released the list of workers who were selected by interview last Sunday. There will be a required meeting for all workers on Thursday, Oct. 10, at 7 p.m. in building 6, room 103.

The following have been chosen AWS workers: Mimi Allen, Jayne Andrews, Lois Brehm, Kay Calkins, Debby Durham, Debbie Edwards, Sally Evinger, Kaye George, Linda Hamilton, Ellen Hansen, Christine Hanus, Susan L. Jacobson, Carole

Jensen, Pamela Kneip, Marsha Sue Lewis, Kathy Lonnquist, Jill McMaster, Tedi Lund, Grace MacIntosh, Julie Marlof, Chris Olson, Paula Peter, Leslie Provorse, Sue Quackenbush.

Vicki Reid, Pat Riddle, Kathryn Ritchie, Lynn Ruser, Patti Schleuning, Chris Schuetz, Jeannie Simmons, Karen Summers, Janel Toon, Linda Warner, Paula Warp, Joan K. Wehrnein, Julie Wertz, and Pam Whitted.

AUF CHARITIES BALLOT OFF CAMPUS STUDENTS VOTE FOR 5

- Keep Biafra Alive Committee
- CARE
- Heart Fund
- Cancer Society
- National Foundation for Infantile Paralysis
- Multiple Sclerosis Society
- Holt Adoption Agency
- U.S.O.
- Whitehall
- Nebraska State Hospital

Return to AUF booth in Nebraska Union by Oct. 11th



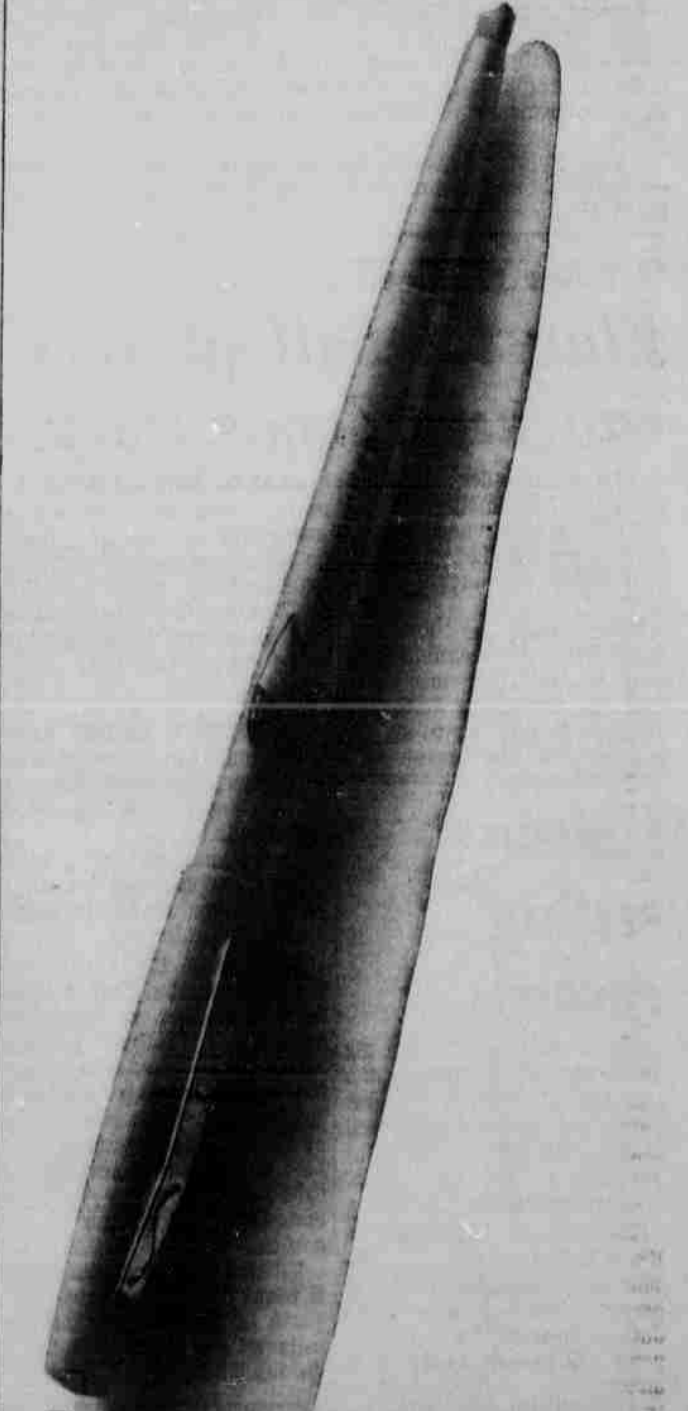
CHERIE \$400 ALSO \$250 TO 1978

Down through the centuries has come the diamond, most enduring and brilliant of all gems . . . the perfect pledge of love. When choosing your ring, remember that every Keepsake Engagement Diamond is registered and guaranteed perfect (or replacement assured).

REGISTERED Keepsake DIAMOND RINGS

KAUFMAN'S

The Yellow-Billed Wordpicker doesn't write words. It helps you remember them.



The Yellow-Billed Wordpicker is a marking pen that pinpoints names, gleans words, and highlights them all in bright yellow. You don't use it to write down the words you have to remember. You use it to write over them.

The Yellow-Billed Wordpicker. It reminds you how smart you should be. And for 49c, you shouldn't have to be reminded to buy one.