

Swim team looses at hands of frosh

The Nebraska swim team lost to Southern Illinois 52-50 Friday.

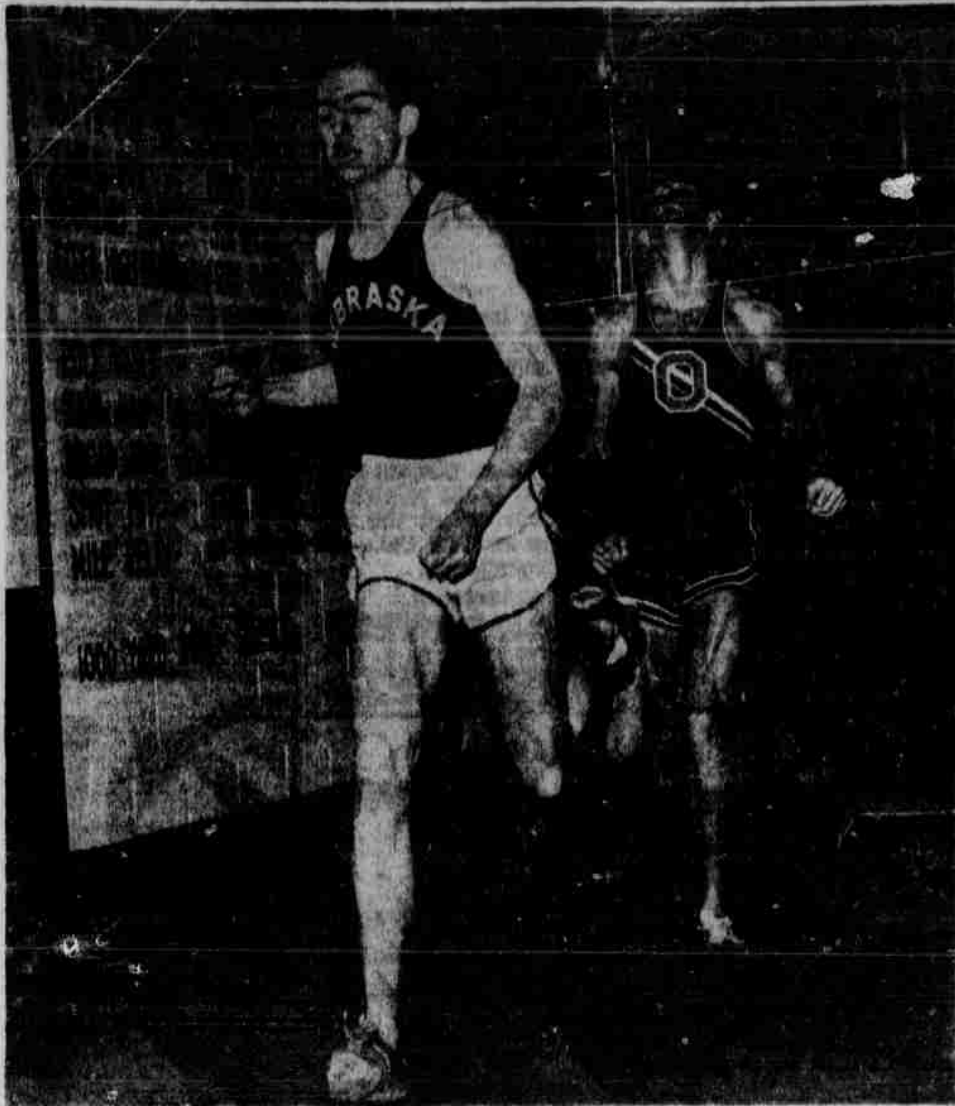
Coach John Reta said his team, "did real well considering the fact that they moved up two freshmen that scored 15 points."

Since the Salukis are not in the Big Eight Conference, they made use of the new NCAA rule enabling freshmen to compete with varsity.

"They just nipped us in the medley relay, giving them a seven point lead right off the bat," said Reta.

Husker standouts in the effort were Steve Nootz, Bernie Hempelman and the free-style relay team. Hempelman was 1.3 seconds off the varsity record in his event.

- 400-yard medley relay — 1. SIU, T—10:30.5.
- 1,000 free — 1. Steiner SIU; 2. Hempelman NU; 3. Cook NU, T—19:20.5.
- 500 free — 1. Nootz NU; 2. Noyes SIU; 3. Conkel SIU, T—1:33.2.
- 50 free — 1. Monstli SIU; Gordon NU; 2. Katherine NU, T—23.2.
- 200 ind. med. — 1. Goetz NU; 2. Ulrich SIU; 3. Little NU, T—2:14.8.
- Diving — 1. Sorensen NU; 2. Duven NU, 2:48.85.
- 500 fly — 1. Glenn SIU; 2. Prentiss NU, T—2:04.4.
- 100 free — 1. Conkel SIU; 2. Nootz NU; 3. Krause NU, T—58.1.
- 500 back — 1. Ulrich SIU; 2. Stasiowski NU; 3. Brzezinski NU, T—2:08.0.
- 500 free — 1. Steiner SIU; 2. Noyes SIU; 3. Cook NU, T—5:22.2.
- 200 breast — 1. Jacobson SIU; 2. Kattorivallio NU; 3. Goetz NU, T—2:34.2.
- 400 free relay — 1. NU (Gordon, Katherine, Nootz, Krause) T—3:31.6.



Les Hellbusch places first in the mile followed closely by Oklahoma State thinclad John Cook at Memorial Stadium Saturday. Hellbusch and Cook also placed first and second in the 1000-yard run. See story on page 4.

Gymnasts beat K-State with highest score yet

Nebraska put out a "delightful team effort" according to Jake Geier, as the gymnasts beat Kansas State Saturday, 169.40-162.65.

"I thought the boys earned every point they got," Geier commented.

"Normally a team earns the highest scores at home with your own equipment." Even so, the Manhattan meet produced "the highest score we have earned yet this year," Geier said.

- NU—169.40 KSU—162.65
- Floor exercise — 1. Steve Kinder (KS); 2. Pat McGill (N); 3. Steve May (N), Score—8.7.
- Ride horse — 1. Scott Dolenc (KS); 2. Ken Lamb (N); 3. Tom Traver (N), Score—8.4.
- Still rings—1. (tie) Colin Campbell (KS) and Alan Cook (N); 2. Mickey Johnson (N), Score—8.75.
- Trampoline—1. Tom Rising (N); 2. Dave Gechter (KS); 3. Jack Ayres (KS), Score—8.95.
- Long horse — 1. Ayres (KS); 2. Don Bridges (KS); 3. (tie) May (N), Robert Santoro (N) and George Sederavicius (N), Score—9.25.
- Parallel bars—1. Johnson (N); 2. Bridges (KS); 3. Ayres (KS), Score—8.55.
- High bar—1. Johnson (N); 2. Bridges (KS); 3. Ayres (KS), Score—8.90.
- All-around—1. Johnson (N), 50; 2. Dolenc (KS), 42.35.

Campus Calendar

- MONDAY, FEB. 12
- UNION FILM COMMITTEE—4:30 p.m.
- DESERET CLUB—5 p.m.
- TOWNE CLUB—6 p.m.
- UNICORNS—7 p.m.
- YWCA REHEARSAL — 7:30 p.m.
- MATHEMATICS COUNSELLORS—7:30 p.m.
- TUESDAY, FEB. 13
- SEMPER FIDELIS SOCIETY—8 p.m., Mon. N. Building.
- INTER-VARSITY — 8 a.m.
- BAPTIST STUDENT UNION—8 a.m.
- PROJECT RETRIEVE—8 a.m.
- BUILDERS SPECIAL EDITION—2:30 p.m.
- PLACEMENT LUNCHEON —12:30 p.m.
- PANHALLENTIC—3:30 p.m.
- BUILDERS CALENDAR AND DIRECTORY—3:30 p.m.
- TASSELS — 4:30 p.m.

graduating engineers, chemists and physicists

Join



the Navy's largest industrial complex: the San Francisco Bay Naval Shipyard

ENJOY UNMATCHED POTENTIAL FOR PROFESSIONAL AND PERSONAL GROWTH. You'll be challenged by the variety offered in the design, construction, overhaul and conversion of Polaris missile submarines, guided missile frigates, destroyers, aircraft carriers, deep submergence craft, Sea Lab III, etc.

APPLY YOUR TALENTS TO IMPORTANT PROGRAMS: Nuclear power, ship structures, electrical/electronic systems, missile systems, marine/mechanical design, welding, chemistry (analytical) and metallurgical inspection and test, quality assurance, process

methods and standards, tools and plant utilization.

LIVE IN THE FAMED BAY AREA. San Francisco Bay Naval Shipyard has two work sites located 40 miles apart: Hunters Point in San Francisco and Mare Island in Vallejo, California. Each location has ready access to the cultural advantages of San Francisco. All types of recreation from surfing in the Pacific to skiing in the Sierras are within easy driving distance. Continue your professional growth by attending classes at one of the many outstanding colleges and universities located nearby.

Representative on Campus
FEBRUARY 16, 1968
for interview, contact your placement office

An Equal Opportunity Employer. U.S. Citizenship Required.

Nebraskan Want Ads

PERSONAL

Personalized typing for theses, theses, and reports. No calls after 9pm. 488-6854.

HELP WANTED

Local Company needs two college men to work part time. 688-4414.

FOR SALE

1967 Kawasaki 175 motorcycle. Black. Contact Steve Good. 472-2543.

Must Sell—1968 Yamaha 100 extra good condition. Call 799-3116.

FOR RENT

Small 3 room cottage. Furnished, air-conditioned, gas heat, outdoor picnic area. Long & favorite of married University students. References required. Call after 3pm. 488-2284.

Follow the team to KU

A chartered bus for the University of Kansas game, Feb. 17, will leave the Nebraska Union at 1 p.m., according to Phil Bowen of the Trips and Tours committee.

Students can sign up for the trip any time before Feb. 17 at the Trips and Tours Office.

The ten dollar fee for the trip will include transportation to Lawrence and tickets to the Jayhawk game. Fifty students can be accommodated.

Bowen said the group should return late Saturday night. Further information can be obtained by calling the Trips and Tours office.

SEND HER YOUR HEART THROUGH FLOWERS THIS VALENTINES DAY WITH:
AZALEA PLANTS \$6 \$7.50 \$10
VALENTINE SPRING BOUQUETS \$6-\$15

Danielson Floral
— WE DELIVER ALSO —

Kaufman's Jewelers
Your Exclusive Keepsake Dealer in Lincoln at 1332 "O"



SAVE MONEY

MAKE MONEY

USE DAILY NEBRASKA WANT ADS:

Standard rate of 5c per word and minimum charge of 50c per person. All advertisements must be paid before ads appear.

Use this handy classified form

DAILY NEBRASKAN STUDENT UNION UNIV. OF NEBR. LINCOLN, NEBR.

Signed _____
Address _____

1. What on earth is that?
The world's first almost perfect pickle slicer.

2. What'd you mean "almost"?

3. How'd you make out with your self-sharpening toothpick?

It keeps rejecting dills.

I gave it up to work on my pre-stretched rubber band.

4. Ever considered going into a field more likely to give you a living income?

5. Maybe you ought to look into the openings at Equitable. They've got a wide range of fascinating jobs that give you the chance to be of service. And they also give you a salary you can live on.

But I want to be of service to humanity. And I like the challenge it provides.

Say, think they'd be interested in my fail-safe lint picker?

Make an appointment through your Placement Officer to see Equitable's employment representative on February 17, or write: James L. Morice, Manager, College Employment.

The EQUITABLE Life Assurance Society of the United States
Home Office: 1285 Ave. of the Americas, New York, N.Y. 10019
An Equal Opportunity Employer, M/F © Equitable 1968

MICHELSON LABORATORIES

NAVAL WEAPONS CENTER, CHINA LAKE, CALIFORNIA 92538

...a place where your career opportunities will grow

IF YOUR NEEDS FIT OUR NEEDS LET'S MEET ON CAMPUS

Feb. 14

- TECHNICAL
- AEROSPACE ENGINEERING
 - CHEMICAL ENGINEERING
 - ELECTRICAL ENGINEERING
 - GENERAL ENGINEERING
 - MATHEMATICS
 - MECHANICAL ENGINEERING
 - PHYSICS

Our interests are broad — perhaps your major is in an allied field — Let's talk it over.

Michelson Laboratories, Naval Weapons Center, is 150 miles northeast of Los Angeles where there are excellent year around recreational facilities in nearby areas. Here you will have the opportunity of working with the nation's leading scientists and engineers. Our training programs will match your talents and interests, and you will have the benefit of extending your education through special arrangements with leading universities. You will enjoy liberal vacation, sick leave and retirement programs.

Summer employment opportunities for faculty, graduate and undergraduate students.

IF INTERVIEW IS INCONVENIENT, WRITE TO:
Head, Employment Division, Code 652

MICHELSON LABORATORIES

NAVAL WEAPONS CENTER, CHINA LAKE, CALIFORNIA 92538

An equal opportunity employer / U.S. Citizenship required