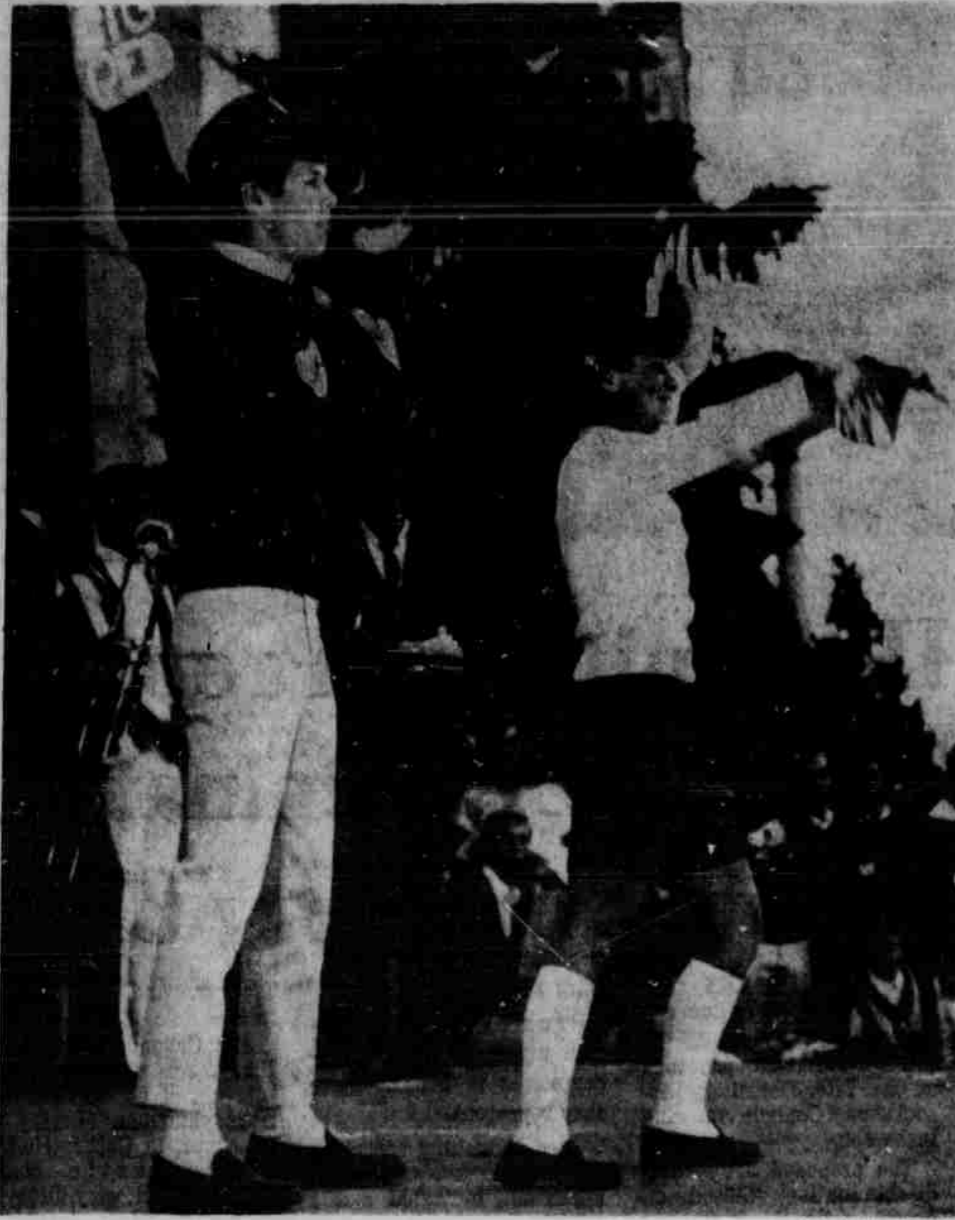


Yell Like H---



RALLYING AT MEMORIAL STADIUM . . . students conjure up "Go Big Red" power on the eve of the Colorado-Nebraska clash.

photo by Dan Ladely

Dr. Luke Lee To Give Keynote Address As Feature Of United Nations Talk

"Can the United Nations, or any international organization, cope with the problem of world peace?" This question will be the prime concern of a public discussion, according to Richard E. Gilbert, co-chairman of United Nations Day activities for Lincoln.

A discussion on the United Nations as a peace-keeping force in today's world will be held Monday at 7:45 p.m. in the St. Paul Methodist Church. Admission will be \$1. Gilbert said that this program should be of interest to university stu-

dents and faculty members because of its timeliness with the University's "Vietnam Week."

The keynote address will be given by Dr. Luke Lee, according to Gilbert. Dr. Lee will examine the UN and his address is expected to deal with the UN charter, its flexibility, and its potential for future peace-keeping operations.

panel, the topic will be open for public discussion. Dr. Lee is presently the Director of the New York Office of Duke University's Rule of Law Research Center. He received a BA degree from Yenching University, China, his MA in economics from Columbia University, his PhD from Fletcher School of Law and Diplomacy (Harvard and Tufts), and a law degree from the University of Michigan. He taught at Duke University and George Washington University and is currently a part-time lecturer on diplomatic and consular law at Columbia University.

The following interviews are scheduled for the week of Oct. 23 and will be held at the Placement office in the Nebraska Union.

MONDAY Oct. 23

THE GATES RUBBER COMPANY—B.S.-M.E., Ch.E., Chem., I.D., Ag. E.

CHEVRON RESEARCH COMPANY—B.S., M.S.—Ch.E., E.E., M.E., M.S., Ph.D.—Ph.D.-Chem.

THE BENDIX CORPORATION-KANSAS CITY DIVISION—B.S., M.S.-Ch.E., E.E., M.E., I.E., Physics, Chem; Summer Employment.

CORNING GLASS WORKS—All degree levels—Bus. Adm., Acctg., Finance, M.E. E.E., Ch.E., Programmers, Personnel, Sales, Lib. Arts.

PHILLIPS PETROLEUM COMPANY — ATOMIC RESEARCH DIVISION—All degree levels—C.E., E.E., M.E., Ch.E., Physicists, Math., M.S., Ph.D.-E.M.

BANKERS LIFE OF NEBRASKA—A.B., B.S., M.A., M.S.—Bus. Adm., Acctg., Arts and Sci.

TUESDAY, Oct. 24

DEERE & COMPANY—As before.

BLACK, SIVALLS, BRYSON, INCORPORATED—B.S., M.S.—M.E., E.E., Ag.E., Ch.E., I.E., Bus. Adm., Acctg., Mgmt.

THE BENDIX CORPORATION—KANSAS CITY DIVISION—As before.

PHILLIPS PETROLEUM COMPANY—As before.

MONSANTO COMPANY—All degree levels—Chem., Ch.E.; B.S., M.S.—M.E., E.E.; Ph.D.—Physics, Summer employment.

DOVE CORNING CORPORATION—B.S., M.S.—Ch.E., E.E., M.E., Physics, Acctg., Mktg.; all degrees—Chem.

HUMBLE OIL & REFINING COMPANY—B.A., B.S., M.A., M.S.—Econ., Gen. Bus.-Finance, Ind. Mgmt., Lib. Arts, Mktg.

CORNING GLASS WORKS—As before.

U.S. NAVAL SHIPS MISSILE SYSTEMS ENGINEERING STATION—To be announced at a later date.

DEERE & COMPANY—East Campus.

WEDNESDAY Oct. 25

PITTSBURGH-DES MOINES STEEL COMPANY — B.S., M.S.—C.E., M.E., P.I.E.

CATERPILLAR TRACTOR COMPANY—B.S., B.A., M.S., M.A.—Ag.E., C.E., E.E., M.E., E.M., Ch.E., Data Processing, Sales, MFG., etc.

MONSANTO COMPANY—As before.

FARMLAND INDUSTRIES, INCORPORATED — B.S. — Math/Physics, Chem., Agron., Acctg.; B.S., M.S.—Ch.E., M.E.

NATIONAL CASH REGISTER COMPANY—B.S., M.S., Ph.D.—E.E., M.E., Ch.E., Chem.

BORETEL & COMPANY—To be announced at a later date.

PHILIP G. JOHNSON & COMPANY—B.S., M.S.—Ac-countants.

THURSDAY Oct. 26

GENERAL ELECTRIC COMPANY—B.S., M.S.—Ch.E., Chem., E.E., Physics, M.E., Math., E.H.; M.B.A.—with undergraduate engineering degree.

INTERNATIONAL HARVESTER COMPANY—B.S., M.S.—Ag.E., E.E., C.E., E.M., M.E., Bus. Adm., Math., Acctg., Finance, Econ.

CATERPILLAR TRACTOR COMPANY—As before.

FRIDAY Oct. 27

GENERAL ELECTRIC COMPANY—As before.

B. F. GOODRICH RESEARCH CENTER—All degrees—Chem., Math., Physics, Ch.E., M.E., E.E., E.M.; B.S., M.S.—Ag.E., C.E.

B. F. GOODRICH RESEARCH CENTER—All degrees—Chem., Math., Physics, Ch.E., M.E., E.E., E.M.; B.S., M.S.—Ag.E., C.E., B.S.

B. F. GOODRICH CHEMICAL COMPANY—M.S.—Chem., Physics, M.E., Ch.E., E.E., I.E.

INTERNATIONAL HARVESTER COMPANY—As before.

B. F. GOODRICH TIRE COMPANY—B.S., M.S., Ph.D.—M.E., E.E., Math., Physics, E.M.; B.S., M.S.—C.E., Ag.E., Math.

DETAILED INFORMATION MAY BE OBTAINED AT THE PLACEMENT OFFICE, NEBRASKA UNION 340.

SALE SALE

Clearance

Starts Mon. Oct. 23

Fall Sale on many paper and office supplies.

Paper Backs—Large Disc.

Campus Bookstore

13th & R NO Phone Orders, Please!

Westminster To Present Biggs In Organ Concert

Conrad Morgan, director of music at Westminster Presbyterian Church, will present an organ recital Oct. 29 at 4 p.m. at Westminster.

The program is thirtieth in the series of the Westminster Vesper Musical presentations inaugurated by Morgan five years ago and endowed by the late Florence M. Wheeler Howe.

Morgan received his Masters' Degree in Organ and Church Music from the University of Colorado and also studied at the Academy of Music in Vienna, Austria. He served as faculty member at the University of Colorado and the University of Nebraska before assuming his present position.

Mortar Board-Innocents Kick-Off '67 Quiz Bowl

The kick-off for this year's Quiz Bowl schedule will be a Mortar Board-Innocents match No. 2, according to Leslie Walt vice president of public relations.

After the match an impromptu match will give people from the audience an opportunity to participate in Quiz Bowl competition.

Miss Walt said that a required captain's meeting would follow the impromptu match.

Applications for quiz bowl teams can be picked up outside room 345 in the Nebraska Union and must be returned by 8 p.m. Nov. 2 to Bill Ptacek, 1645 R.

There must be eight people on a team, and \$5 must accompany each application.

New Quiz Bowl officers are Maryann Jorgensen, president; Leslie Walt, vice president of public relations; Bill Steen, vice president of questions, Mark

Now Open

Eastern Style Restaurant

EXOTIC

East Indian Food & American Favorites

1736 South St.
4 P.M. - 12 P.M.

Closed Tuesdays

When in the course of human events it becomes necessary to hold up your pants

...break away from the tyranny of the dull belt. Fife and Drum traditional belts come in a spirited assortment of colors, leathers and buckles. Some with matching billfolds, keycases and pocket secretaries.

Now is the time to declare your independence from the commonplace with Fife and Drum.

A look that's part of the American grain.

Bonus: Who is Button Gwinnett? Tell us and we'll send you a Button Gwinnett kit (5 different buttons and bumper stickers). If you don't know, confess...and we'll send you the kit anyway. Write "Button, Button" Dept., P.O. Box 5269, Chicago, Illinois 60680.

Fife & Drum Belts By Paris

The Hitchin' Post

Shag Leathers: A. 1 1/4" with exclusive Fife & Drum buckle, \$2.50. B. 1 1/4" black reverses to rust, \$6.00.

PLA-MOR

friday night



NEVER!

I won't go into business when I graduate because:

- a. I'd lose my individuality.
- b. It's graduate school for me.
- c. My mother wants me to be a doctor.

our Bell System teammates, the Bell telephone companies. This takes a lot of thought, decisions, strong stands for our convictions, (and sometimes some mistakes... we're human, every 160,000 of us).

Individuality pays off. Not only in raises, but in personal reward as well. Like an engineer who knew deep down that there was a better way to make a certain wire connector—and did. Or a WE gal who streamlined time-consuming office procedures, and saved us some \$63,000 a year.

Rewards and accolades. For saying "No." For thinking creatively and individually. For doing.

Not every hour is Fun Hour, but if you've got imagination and individuality—you've got it made. With a business like Western Electric. We'll even help you answer b) with our Tuition Refund program. Come on in and go for President!

Can't argue with c), but before you check a) or b)—pencils up! There have been some changes. Drastic changes in the business scene. But changes in the vox populi attitude regarding business... especially on campus... just haven't kept pace.

Take the belabored point that business turns you into a jellyfish. The men who run most of the nation's successful firms didn't arrive by nepotism, by trusting an Ouija board, or by agreeing with their bosses. Along the way, a well-modulated "No" was said. And backed up with the savvy and guts today's business demands.

In short, individuality is highly prized in much of the business world—the successful much. Even when the business is big. Like Western Electric, the manufacturing and supply unit of the Bell System.

We provide communications equipment for:

Western Electric
MANUFACTURING & SUPPLY UNIT OF THE BELL SYSTEM