

Union Offers Films

Students attending the Summer Session have the opportunity to view American and foreign films at Cinema '66 and 1966 Cinema International.

Cinema '66 is presented by the Nebraska Union each Thursday evening at 7:00 p.m. in the Union Auditorium. Admission price is 50c and 1D card.

Bring the Best
Films to be shown by Cinema '66 have been selected by the Union Program Office. According to program director, Richard Scott, Cinema '66 attempts to "bring the best of recent American releases to the University campus."

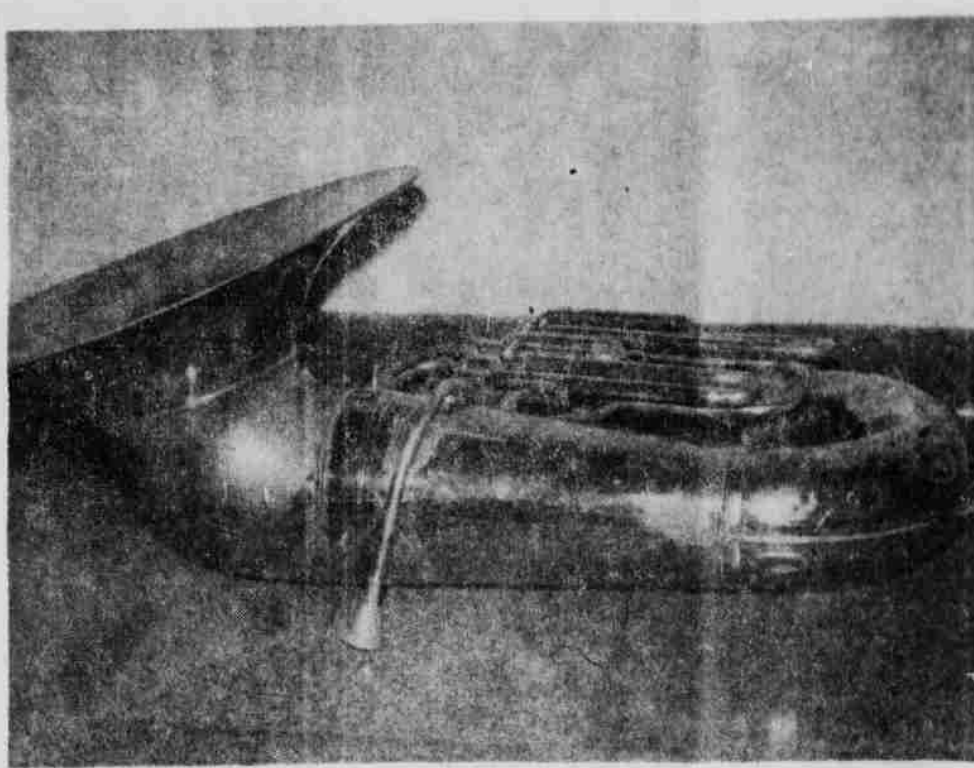
The following films will be shown during the remainder of the Summer Session by Cinema '66: "Shane," July 7; "Imitation of Life," July 14; "Island in the Sky," July 21; "Once More With Feeling," July 28.

Cinema International
1966 Cinema International is produced in collaboration with the Nebraska Union and the Sheldon Art Gallery. Films are shown each Tuesday evening at 8:00 p.m. in the Sheldon Gallery Auditorium. Admission is \$1.00 per film.
The list and description of films to be shown by 1966 Cinema International are:
July 12, ALEXANDER

NEVSKY (Russian)
The story is based on historical events in the year 1242. Russia was invaded that year by the powerful Order of Teutonic Knights, who swept across the Baltic provinces. They were defeated by the people of the city-state Novgorod, who were led by Alexander Nevsky, at the Battle of the Ice. Prokofiev's score for this film has been subsequently recorded as the popular "Alexander Nevsky Cantata."

July 19, SALT OF THE EARTH (American)
After a long court battle over whether the picture had been blocked from commercial showings, "Salt of the Earth," has finally been released 12 years after its filming. The cast of non-professional actors are members of Local 890 of the International Union of Mine, Mill, and Smelter Workers. The story depicts the struggle of Mexican-American zinc workers and their wives for equality.

July 26, THE LOVE MAKERS (French)
Jean-Paul Belmondo and Claudia Cardinale star in a story about a romance which ends in tragedy for a young farm boy. The young boy's love for a girl causes him to steal and work at a succession of sordid jobs.



A LONELY REMEMBRANCE. Forgotten by the high-schoolers and missed by the campus is the representative tuba that only last week was a symbol of the All-State activities on campus.

Coeds "Spice" A Man's World

Whoever said this is a man's world had it all wrong.

The enrollment of three University of Nebraska coeds in the Air Reserve Officers Training Corps (ROTC) and

their completion of the freshman course proved that it is a rare place where women are not found.

First In History
Bonnie Brown, Donnie

Jones and Lois Quinnett were the first women in the University's history to become a part of the ROTC program, according to Col. W. H. Bowers, professor of aerospace studies and chairman of the department.

He said the coeds, like the men, had one hour of academic classwork a week. However, they were excused from the hour lab at which drills are performed and uniforms required.

The purpose of the training, Colonel Bowers said, was "to give the girls a chance to learn about the military and the part it plays in the world today."

He said, "The Department is made up of thousands of officers, enlisted men and civilians who work for us. The military is probably the biggest business in the world. Therefore, many girls at the University will probably marry men connected with it. Since few girls won't be exposed to the military in one way or another, there is no reason why they shouldn't learn about it."

The one credit hour elective course aims to prepare coeds for a "knowledgeable citizenship." It would not help them obtain a commission if they were to join a women's branch of the service, according to Colonel Bowers. Though both instructors and students were happy to have the coeds in their classes, he said that the women, who

International Center Coming To Campus

The University of Nebraska will become an international center for the improvement of the protein content in wheat under a three-year, \$370,152 contract with the Agency for International Development.

The contract, which may be extended to 10 years, was approved by the Board of Regents last week. It calls for screening wheat selections from the World Wheat Collection which contains 15,000 entries.

Importance of Research
Chancellor Clifford M. Hardin, said "the implications of this research are enormous both in Nebraska and throughout the world. This work, coupled with the work being done on sorghum culture, further emphasizes the

importance and quality of agricultural research in the plant sciences at the University."

He continued to say, "Such an offer is a great tribute to the talent in the agronomy department."

Main investigators on the project will be Paul J. Mattern, head of the University's Wheat Quality Laboratory; Dr. Virgil Johnson, professor of agronomy and U.S. Department of Agriculture agronomist; and Dr. John Schmidt, professor of agronomy.

Selection-breeding Program
Mattern stated that "the nutritional quality of corn has been doubled through a similar selection-breeding program and known technology indicates that we already

have the ability to increase the protein content in wheat 30 per cent. Through the World Collection, we hope to find gene sources to improve the nutritional protein composition of wheat even more."

The essential amino acids—building blocks in protein—are lysine, methionine, threonine and tryptophane. These are also the nutritional limiting amino acids in wheat.

Significant Contribution
Wheat varieties which are higher in the first limiting amino acids, particularly lysine, would make a significant contribution to the nutrition of the people on a wheat diet, or populations in developing countries where wheat could be important in the diet. A genetic source of high lysine in wheat could be incorporated into new wheat varieties to provide better protein nutrition in wheat.

In addition to identifying high lysine and nutritionally promising lines of wheat, these selections will be grown in different geographical areas around the world to measure the effect of growing conditions on the protein composition in these wheats, Mattern said.

The high protein selections and new genetic sources of high protein will be introduced into wheat breeding programs. Lines of wheat exhibiting genetically high protein properties will be made available to other developing countries through the Agency for International Development for combining with adapted high protein lines.



Connie Castle
Coed Represents NU Campus

A junior at the University of Nebraska has been named stewardess campus representative for United Air Lines at the university.

Connie Castle, a 20-year-old coed from Chappell, entered stewardess training on June 20 at United's Stewardess Training School near Chicago for 5½ weeks of instruction ranging from inflight duty studies to appearance counseling.

Connie is majoring in secondary education.

Comedy And Famous Families Portrayed During The Week

Comedy, famous families, and famous music are some of the subjects to be seen this week on KUON-TV, Channel 12, Lincoln-Omaha.

The Nebraska Educational Television Network spotlight first settles on "The San Francisco Symphony," tonight at 6 p.m. Enrique Jorda conducts performances of "Symphony No. 45, in F Sharp Minor" (Farewell) by Franz Josef Haydn; "Fantasia on a Theme by Thomas Tallis" by Ralph Vaughn Williams; and "Piccolo Concerto Notturmo" by Guido Turchi.

Heartbreak House
Maurice Evans and Margaret Leighton star tonight at 8:30 p.m. in "Heartbreak House," this week's SHOWCASE presentation. This prophetic comedy by George Bernard Shaw explores the weaknesses and strengths of Western European Society in the 1920's. Shaw does this by bringing ten extraordinary people together for a weekend at an unusual English home — Heartbreak House.

The music of Johann Sebastian Bach and his sons provides the framework of a program built around the most famous family in musical literature and the relationships between them on FESTIVAL OF THE ARTS, Friday, at 9 p.m.

National Production
Martin Jisman conducts the orchestra and chorus of the New York Choral Society in "Bach and His Sons," an hour-long National Educational Television production. The first of the two provocative programs on U.S.A. WRITERS — "The Catcher

in the Rye" Revisited," will be viewed tonight at 7 p.m. Dr. James E. Miller, professor of English at Chicago University (formerly Chairman of the English Department of the University of Nebraska), leads a group of graduate students in the discussion of the novel's literary merits and lasting power, and its sociological pertinence fifteen years after publication. (Also to be seen Friday, at 7 p.m.)

TODAY
4:30 UNIVERSITY ARTIST ENCORES (Repeat from Monday, July 4, 8 p.m.)

5:30 WHAT'S NEW
"This is Arizona" examines several aspects of wild animals showing how each has made special adaptations to its desert environment. (N.E.T.)

6:00 SAN FRANCISCO SYMPHONY (Repeat from Tuesday, July 5, 8 p.m.)

7:00 U.S.A. WRITERS
Dr. James E. Miller, University of Chicago English professor, leads a seminar discussion of J. D. Salinger's "The Catcher in the Rye." (N.E.T.)

7:30 AT ISSUE
"Congress and Ethics" examines the controversy surrounding a code of ethics for Congress. (N.E.T.)

8:30 SHOWCASE
Maurice Evans and Margaret Leighton head a list of ten top stars in the first American television production of George Bernard Shaw's "Heartbreak House." (E.T.S.)

TOMORROW
9:30 COME WITH ME
"How Does It Get There" shows a variety of freight-carrying vehicles including trucks and trains in order to show how freight is moved and inform children on the role of the worker in the community. (U. of N.)

4:30 THE BIG PICTURE
THE FRIENDLY GIANT (Repeat from Monday, July 4, 8:15 p.m.)

5:30 WHAT'S NEW
Swampers tell stories of animals, moonshine, and murder as viewers follow them on a boat trip into Georgia's Okefenokee Swamp. (N.E.T.)

6:00 U.S.A. COMPOSERS (Repeat from Tuesday, July 5, 8 p.m.)

6:30 TYPE RIGHT
7:00 AT ISSUE (Repeat from Wednesday, July 6, 7:30 p.m.)

8:00 THE GREAT SOCIETY
KOLTANOWSKI ON CHESS
Mr. Koltanowski discusses Mexican champion Carlos Torre, and demonstrates two of his famous games. (E.T.S.)

9:00 THE FRENCH CHEF

(Repeat from Monday, July 4, 6:30 p.m.)

FRIDAY
9:30 COME WITH ME
"How Do We Get There" is designed to help the Head Start child develop concepts about how people travel, and bring more community workers and occupations to the child's attention. (U. of N.)

4:30 THE GREAT SOCIETY (Repeat from Thursday, July 7, 8 p.m.)

5:00 ADVENTURES IN THE OUTDOORS
THE FRIENDLY GIANT (Repeat from Tuesday, July 5, 8:15 p.m.)

5:30 WHAT'S NEW
Today's program tells the story of the rescue and taming of a comatose leopards. (N.E.T.)

6:00 SCIENCE REPORTER
"Power for the Mouth Ship" examines the electric on-board power system of the Apollo spacecraft and the unique power source—the fuel cell. (N.E.T.)

6:20 UNIVERSITY OF NEBRASKA NEWS
6:45 SOCIAL SECURITY IN ACTION
Broadway singer-dancer Carol Lawrence is this week's guest.

7:00 U.S.A. WRITERS (Repeat from Wednesday, July 6, 7 p.m.)

7:30 KOLTANOWSKI ON CHESS (Repeat from Thursday, July 7, 8 p.m.)

8:00 GLENN GOULD: OFF THE RECORD
Viewers are introduced to the Canadian pianist, famed for his performances of Bach, at his cottage home near Ontario. (N.E.T.)

8:30 RIDGE WITH JEAN COX (Repeat from Monday, July 4, 6 p.m.)

9:00 FESTIVAL OF THE ARTS
The New York Choral Society orchestra and chorus, conducted by Martin Jisman, makes its television debut in an hour-long concert of works by "Bach and His Sons." (N.E.T.)

LITTLE MAN ON CAMPUS



"We've got to find a way to deal with those students who need a specific course in order to graduate."

The picture that gets you where you laugh!



Bob Hope
Elke Sommer
Phyllis Diller



co-starring **CESARE DANOVA** **MARJORIE LORD**
COLOR by DeLuxe
Varsity
STARTS TODAY

STUART
140 N. 13TH ST.
432-1465

DOORS OPEN 12:45 STARTS FRIDAY FROM THE SAME MAN THAT BROUGHT YOU "CHARADE"

GREGORY PECK & **SOPHIA LOREN**
A STANLEY DONEN PRODUCTION
ARABESQUE
TECHNICOLOR/PANAVISION®

with **ALAN BADEL** • **KIERON MOORE**
Screenplay by **JULIAN MITCHELL**, **STANLEY PRICE**, **PIERRE MARTON**
Music: **HENRY MANCINI** Based on the novel "The Cipher" by **GORDON COTLER**
Produced and Directed by **STANLEY DONEN**

Nebraska
1144 "P" ST.
432-3128

DOORS OPEN 12:45 STARTING FRIDAY THRILL AGAIN TO THE GUNS OF NAVARONE!

GREGORY PECK
DAVID NIVEN
ANTHONY QUINN
by **CARL FOREMAN'S**
THE GUNS OF NAVARONE

with **STANLEY BAKER** • **ANTHONY QUAYLE** • **IRENE PAPPAS** • **GIA SCALA** • **JAMES DARREN**
COLOR AND CINEMASCOPE

Cooper
10TH & DOUGLAS
348-2818

Today at **2 & 8 p.m.**
WINNER OF 4 ACADEMY AWARDS

IN OMAHA
METRO GOLDWYN MAYER PRESENTS A CARLO PONTI PRODUCTION
DAVID LEAN'S FILM OF BORIS PASTERNAK'S DOCTOR ZHIVAGO
GERALDINE CHAPLIN • JULIE CHRISTIE • TOMA COURTOUYVA
ALEX GUNNESS • SIOBHAN MCKENNA • RALPH RICHARDSON
OLGA SVIRIDKO • AND OTHERS • PRODUCED BY ROBERT ALTMAN
ROBERT BOLT • DAVID LEAN • MONTY STRONG • METROCOLOR

AT STEVEN JEWELRY... NO MONEY DOWN

Ring making at its loveliest in new

TEXTURED GOLD WEDDING RINGS
by **ArtCarved**

Connie is majoring in secondary education.

HAND-FLORENTINED DAWN SET
His... \$35.00 Yours... \$32.50

HAND-HAMMERED TORN SET
His... \$32.50 Yours... \$29.50

SATIN FINISHED CENTURY B. SYMPHONY*
His... \$45.00 Yours... \$39.50
*As shown or in matching widths

Authorized **ArtCarved** Jeweler

STEVEN CREDIT JEWELERS

Remember—
A special 10% DISCOUNT TO ALL STUDENTS AND FACULTY ON ANY MERCHANDISE AT STEVEN'S

- Watches
- Diamonds
- Watch Bands
- Transistors
- Cameras
- Portable TVs
- Watch Repairing
- Tape Recorders
- Stereos
- Typewriters
- Luggage
- Jewelry Repair

Champion Defends Title

Defending summer session tennis champion Dewayne Furman will be competing against 25 other tennis enthusiasts to regain his title.

Furman, who won the singles tennis championship last year, is also entered in the doubles tournament. Ten

teams are registered for the doubles tennis tournament, said Prof. Carl Wear, director of the tournament.

Wear explained that the rules for the summer tennis tournament will be followed as such:

1. Opponents are to contact each other and arrange to play.
2. First round matches are to be played by July 7th.
3. Play should be at the rate of 4 if a player holds up the progress of the tournament, after a reasonable amount of time has been allowed, his next match will be forfeited to his opponent.
4. Winners of matches are to record their names on the appropriate lines on the tournament sheets in the Physical Education Building. Scores are to be recorded underneath the line.
5. Players are to furnish their own balls. Balls should be new or very little used.
6. Tournament is scheduled for completion by July 29th.
7. The courts are lighted for play at night.
8. A match equals 2 out of 3 set.

TONIGHT DON'T MISS!
"Love Rides the Rails"
at
The Gas Light 322 So. 9
thru July 30
Curtain Time 8:30 P.M.
Admission \$1.50 Wed. & Thurs. \$1 Fri. & Sat.
MELLERDRAMMERS Wed. thru Sat.

84th and "O" DRIVE-IN THEATRE
STARTS TODAY

"THE GROUP"
CANDICE BERGEN
JOAN HACKETT
ELIZABETH HARTMAN
SHIRLEY KNIGHT
JOANNA PETTET
MARY-ROBIN REDD
JESSICA WALTER
KATHLEEN WIDDOWS
COLOR

"VIVA MARIA!"
BRIGITTE BARDOT • JEANNE MOREAU
GEORGE HAMILTON
COLOR