



Monday, Feb. 28, 1966

The Daily Nebraskan

Vol. 81, No. 71

Kappa Komedie Kaptures Koed Kapers



JUBILANT KAPPA'S... cheer their skitmaster, Cheryl Crosier, as she heads for the stage and the first place award at Coed Follies Saturday night. The winning skit was entitled "A Big Wide Wonderful World."

Gary Larsen, Miss Winterer Named 'Outstanding, Ideal'

It was a "Big Wide Wonderful World" for Kappa Kappa Gamma, Gary Larsen and Erma Winterer Friday night as they won top awards at Coed Follies.

Kappa Kappa Gamma sorority won the first place skit award for "It's a Big Wide Wonderful World," a musical parody on the world situation in which president Johnson handed out money. Larsen and Miss Winterer were crowned the 1966 Outstanding collegiate man and Ideal Nebraska Coed.

Second and third place skit awards went to Pi Beta Phi's "Dame Catastrophe" and Alpha Phi's "The Best Place for Me."

Travelers Act

Three Tri Delt freshmen, who call themselves the Belle Cantos, won the first place travelers act award for their performance of original songs. The trio, which includes Cindy and Sandy Hunter and Ruth Bernhardt, received a long ovation from the audience after their performance.

A group of Alpha Xi Delta pledges who performed in "Black Out" won the second place travelers act award.

Other skits in the show

were performed by Chi Omega, Gamma Phi Beta and Pound Hall. A Kappa Delta singing trio and a modern dance by Jean Finnell, Zeta Tau Alpha, rounded out the travelers acts.

Outstanding

Larsen, who was chosen Outstanding Collegiate Man, is a junior majoring in chemistry. He is president of the Interfraternity Council and has a 4.0 plus average. He is a member of Beta Sigma Psi fraternity.

The Ideal Nebraska Coed, Miss Winterer, is a junior majoring in German and is a member of Kappa Delta sorority. She is the new president of Panhellenic and has a 4.0 plus average.

Other finalists for Ideal Nebraska Coed were Jeanne Pauss, Carolyn Freeman, Pam Hedgecock, Jan Kaufmann, Candy Sasso and Joan Spivey.

Other outstanding Collegiate Man finalists were Roger Doerr, F. C. Green, Larry Johnson, Jim Knyoun, Robert Milligan and Andy Taube.

Finalists

Eleven eligible bachelor finalists and twelve beauty queen finalists for the 1966

Cornhusker were announced by Jim DeMars, Cornhusker associate editor.

Robert Goulet, singer and night club entertainer, will choose Miss Cornhusker, five beauty queens and five eligible bachelors from the finalists.

The eligible bachelor finalists and their residences are: Nate Branch, Selleck Quadrangle; Buzz Brashear, Kappa Sigma; Steve Curry, Sigma Phi Epsilon; Roger Brodd, Delta Upsilon; Mike Grace, Sigma Phi Epsilon; Klaus Hartman, Cather Hall.

Roger Hansen, Theta Xi; Vic Hancock, Chi Phi; Stu Wiley, Phi Gamma Delta; Gary Klein, Ag Men; and Andy Taube, Sigma Chi.

Beauty queen finalists are: Jan Achelpohl, Alpha Phi; Vivienne Amack, Pound; Becky Brackie, Alpha Phi; Jean Delbridge, Pi Beta Phi; Jackie Freeman, Kappa Kappa Gamma; Annette Gessner, Delta Delta Delta; Mary Jo Sharrar, Delta Gamma.

Susan Sitorius, Alpha Delta Pi; Karen Noll, Chi Omega; Pam Wragge, Pound Hall; Susan Dowe, Kappa Alpha Theta; and Jeanne Howard, Kappa Alpha Theta.



STUDENT LEADERS... Gary Larsen and Erma Winterer receive Outstanding Collegiate Man and Ideal Nebraska Coed titles.

AWS Slatings Include Dual Representation

Candidates for AWS Board positions for the March 9 elections are representing living areas as well as respective classes. Women may vote for candidates from the living unit in which they live and from their class.

East Campus

One individual will represent east campus. The three candidates are:

Evelyn George who is presently carrying a 2.9 average and is a member of the inter-dorm coordinating council.

'Gas Leak' Forces Lab Evacuation

A supposed gas leak which caused the evacuation of Avery Lab Friday afternoon and brought fire and gas trucks to the University has been termed a false alarm.

Dr. Norman Cromwell, chairman and professor of chemistry, said that the gas smell was found to be only a problem of ventilation.

"We evacuated the building from about 1 p.m. until 2 p.m. before we finally figured out the cause of the smell," explained Cromwell.

According to Cromwell, the supposed gas leak was caused in one of the laboratories by a sulfur compound which is used to put an obnoxious odor in natural gas so that leaks in gas lines can be detected. The compound had been used correctly, and the fumes were eliminated by a ventilating hood.

However, an east wind picked up these fumes and blew them up to the roof of the lab, where they were drawn in by the building's ventilating system and recirculated throughout the lab.

"We were very concerned, because a few months ago, we did have a serious gas leak in the tunnels outside the building," Cromwell said. "Something will have to be done to the ventilating system so that we can always be sure when we do have a gas leak."

Students Attend PTP Conference

Six University students recently attended the People-to-People regional conference.

An international student panel presented a program to the group. In addition, there was a discussion of the role of the foreign student advisor. U.S. Senator Pierson from Kansas also spoke.

University students attending included Joel Swanson, Steve Matthews, Sarah Helm, Ann Kennedy, Pam Kot and Carolyn Bedient.

Her activities include vice president of Fedde Hall, treasurer of the ag executive board, ag executive board representative for the University 4-H club, public relations director of the Home Economics chapter, chairman of the personnel committee for Hospitality Day and an AWS representative.

Jan Kaufmann who is president of Burr East and a member of Alpha Lambda Delta. She is carrying a 3.7 average and is vice president of Phi Upsilon Omicron, home economics honorary.

Her other activities include being social and service chairman of the Home Economics chapter, assistant chairman of Hospitality Day, program chairman of HEEA and finalist for Ideal Nebraska Coed. She also belongs to UNSEA and the University 4-H club.

Janet Whitney who is carrying 3.2 average and is a member of east campus Builders, a Ag Union committee and the University 4-H club.

City Campus

The city campus dormitories will have three representatives on the Board. Candidates are:

Betty Heard who is carrying a 3.1 average and is a member of the YWCA juvenile court committee.

Pam Hubbard, a member of the Union trips and tours committee and carrying a 3.6 average.

Elaine Kallos who is a floor president in Pound Hall and carrying a 3.1 average.

Kathryn Kearns who is a member of Lambda Tau and the Builders tour committee with a 2.7 average.

Candy May who is a student assistant in Selleck and a member of Nebraska Masquers. She is carrying a 2.6 average.

Lynda Shannon who has a 3.0 average and activities include work with the Malone Center.

Tish Voichahoske who is chairman of the Friends of SNOC student conduct committee and a member of Newman Club and the Council on Religion. She has a 3.3 average.

Andrea Warren who is a transfer student with a 3.2 average.

Off-Campus

Candidates for the one position representing off-campus students are:

Carol Bartlett who is a member of Towne Club and has a 2.6 average. She was an AWS worker and Builders First Glance section editor. She also belongs to UNSEA and the YWCA.

Jodie Brum who has been an AWS worker and an AWS representative. She is secretary of Alpha Delta Pi and a member of Angel Flight and Builders publicity committee.

Jane Handa who is a member of teenage project and the Union talks and topics committee. She is carrying a 3.2 average.

African Discussion Group Explores Country's Current Political Problems

By Nancy Henrikson Junior Staff Writer

The first discussion in a series concerning today's Africa centered on the political, economic and educational problems in South Africa. The program, sponsored by the University YMCA, took place Sunday in the Nebraska Union.

Esrom Maryogo and Festur Obioha, University African students, Edson Nyamafene, an African student at Nebraska Wesleyan, and Dave Kittams, chairman of the YMCA committee, led the discussion.

Only about \$18 per child is spent on education each year in South Africa. The emphasis is upon tribal custom and they want to revive everything that was there before, Maryogo said.

Obioha described the government as a concentration of power structured like Rhodesia's government, an openly white supremacist government. The government made eight different tribal entities for all Africans.

Tribal chiefs are appointed by the government to rule the African community. It is the only political responsibility of the African people and they take orders from

the South African Nationalistic government.

"Time is against the present situation. The only thing

Mortar Board To Require 3.0 For Membership

Scholastic eligibility for membership in the Black Board has been set at 3.000 cumulative average on the new grade point conversion, according to Barb Beckman, Mortar Board.

Due to a mechanical error, the new eligibility requirement was given Friday in the Daily Nebraskan to be a 2.3.

According to Miss Beckman, most Mortar Board chapters at Universities with a 4-point grading system use the 3.0 average for eligibility in the honorary.

"This semester, we will use a combination of the old 9-point scale and the new system to determine scholastic eligibility," Miss Beckman said. "Last semester's average will be taken into consideration when the old cumulative average was between a 6.4 and 6.6," she explained.

the African people can hope for is status quo," Obioha said.

He noted that the government can arrest a group of people meeting without government authorization and it only takes two people to constitute a group.

The communist party is highly illegal in South Africa and African parties are outlawed.

Carl Davidson, SDS president, explained that South Africa is a parallel with a Fascist police state, and that it is an "outrage, morally and politically."

Geographic isolation cuts off much of South Africa from the outside world. "The white minority is extremely afraid that if communication is established among the natives, the whole thing will go up," Kittams said.

A film shown before the discussion was a travelogue showing the economic growth but little about the growing pains or the desire of the natives for independence.

The next discussion on the contemporary problems in Africa is scheduled for the end of March and will deal with Rhodesia.

Draft Tests To Be Given To College Men In May

The National Selective Service has announced that college qualification tests will be given May 14 and 21 and June 3. However, State Selective Service director Gen. Guy N. Henninger said his office has not yet received word from national headquarters on the tests.

Graduating high school seniors and college students wishing to take the test should mail applications postmarked not later than April 23 to the Science Research Associates of Chicago, according to the national office.

Henninger said he assumed that the applications would be available at all local draft board offices. He said that his office may also distribute the applications to colleges to make it easier for students to obtain the applications.

Tests Optional
Henninger explained that the qualification tests will be optional for students who wish to have this criteria available in addition to grade standings for the local draft boards in determining student deferments. He added that it "would certainly do no harm for students to take the tests."

The three-hour test will include 150 questions covering reading comprehension, verbal relations, arithmetic reasoning and data interpretation. Henninger said that similar tests were given once a year during the Korean War.

Officials have expressed varying reactions, including outright opposition, to tightening student draft deferment requirements.

In the past, students had been deferred if they were carrying a full-time course satisfactorily. However, recently Gen. Lewis Hershey, national Selective Service Director, announced that student deferments would be examined with consideration being given class standings and scores on the qualification tests.

Henninger had said earlier the decision would be left up to local boards whether to use class standings, the grades on the qualification test or a combination of both. During the Korean War, students were required to receive at least a 70 on the qualification test in order to receive a student deferment.

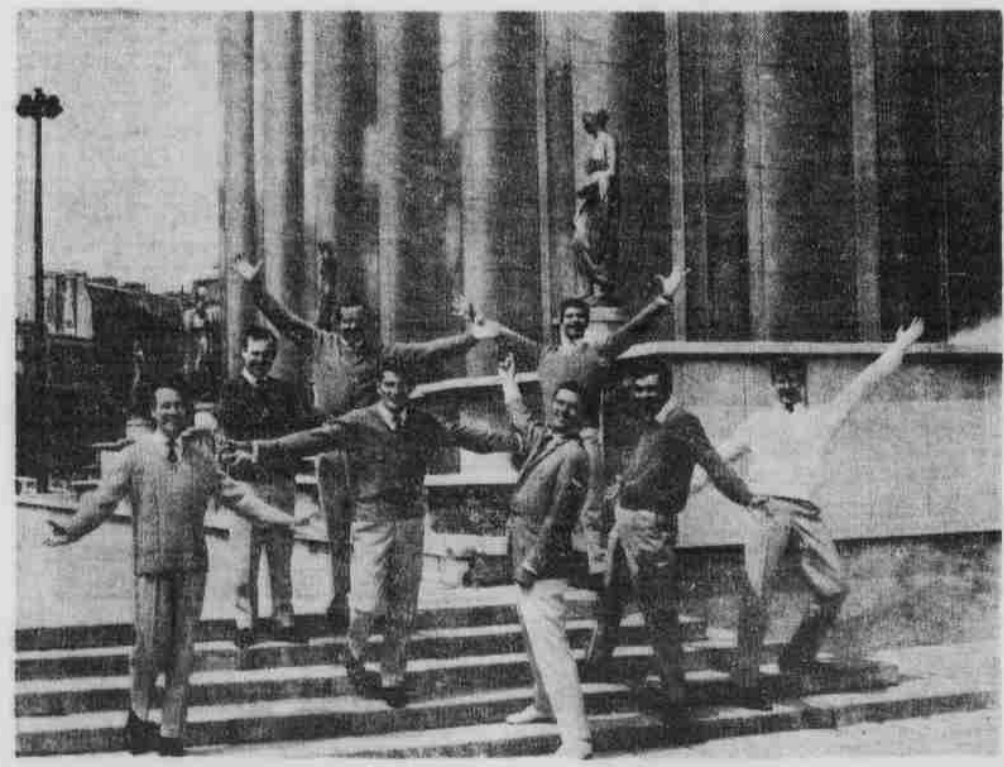
Dr. Floyd Hoover, University registrar, has indicated that the University will cooperate with the Selective Service in providing class standings, noting that the Selective Service could force students to get their class standings for use by the local boards.

Draft Call Cut

The Nebraska draft call for March has been cut from 263 to 183, Henninger said.

This is in line with a 10-
Cont. on pg. 3, col. 7

Sidewalk Serenaders



An internationally famous song-writing team often called the "Rodgers and Hammerstein of France," The Varel and Bailly Chanteurs De Paris, will perform in the Nebraska Union Ballroom at 8 p.m. Thursday.

Hailed by the New York Journal-American as "The most exciting group of singing young men we've heard in years," they sing largely folk and popular songs of "pure nostalgic delight."

Admission to the performance is free and tickets may be picked up at the Nebraska Union concession stand.

Ten May Queen Finalists To Be Chosen This Week

All junior and senior women are eligible to vote Wednesday from a list of 50 candidates for ten May Queen finalists.

The preliminary election, which will be held from 9 a.m. until 6 p.m. at the Nebraska Union and from 9 a.m. until 5 p.m. at the East Union, will be followed by a general election March 9.

The 1966 May Queen will be chosen in the general election from the ten finalists.

Candidates for May Queen and their affiliations are: Sandy Anderson, Love Memorial Hall; Susie Anderstrom, Alpha Phi; Jackie Alber, Alpha Omicron Pi; Debbie Barger, Kappa Delta; Karen Boeckenhauer, School of Nursing; Keo Boreson, Pound.

Patricia Brennan, Phi Mu; Ann Capesus, Gamma Phi Beta; Sandy Cavitt, Pound; Cheryl Crosier, Kappa Kappa Gamma; Susan Cunningham, Kappa Alpha Theta; Donna Eschliman, Gamma Phi Beta; Kathy Flieger, Chi Omega; Marilyn Fox, Alpha Xi Delta; Jane Gregorius, Alpha Chi Omega; Sandy Heybrock, Burr Hall.

Marilyn Hoegemeyer, Kap-

pa Delta; Jeani Hoffmaster, Alpha Phi; Kay Huffaker, Zeta Tau Alpha; Lynne Irish, Kappa Kappa Gamma; Karen Johnson, Kappa Alpha Theta; Di Kosman, Delta Gamma; Margie Lehl, Alpha Omicron Pi; Sue Leonard, Chi Omega.

Sabra McCall, Phi Mu; Mickey McCartney, Delta Delta Delta; Linda Miles, Towne Club; Mary Ann Morledge, Pi Beta Phi; Susie Moore, Pi Beta Phi; Linda Muff, Gamma Phi Beta; Cheryl Navin, Delta Gamma; Jane Oden, Alpha Phi.

Carole Peterson, Alpha Chi Omega; Mary Rakow, Alpha Delta Pi; Margaret Remmenga, Pound; Marbro Rush, UNICORNS; Carolyn Sarcino, Towne Club; Barb Schnegelberger, Chi Omega; Mary Schwentker, Chi Omega; Susie Segrist, Pi Beta Phi.

Sarah Shaw, School of Nursing; Sheryl Soukup, Alpha Phi; Diana Stover, Pound; Susan Stuckey, Pi Beta Phi; Barbara Trites, Gamma Phi Beta; Carol Van Steenberg, Alpha Phi; Elizabeth Vybiral, Selleck; Viki Weber, Zeta Tau Alpha; Mary Wright, Chi Omega; and Susie Young, Alpha Delta Pi.