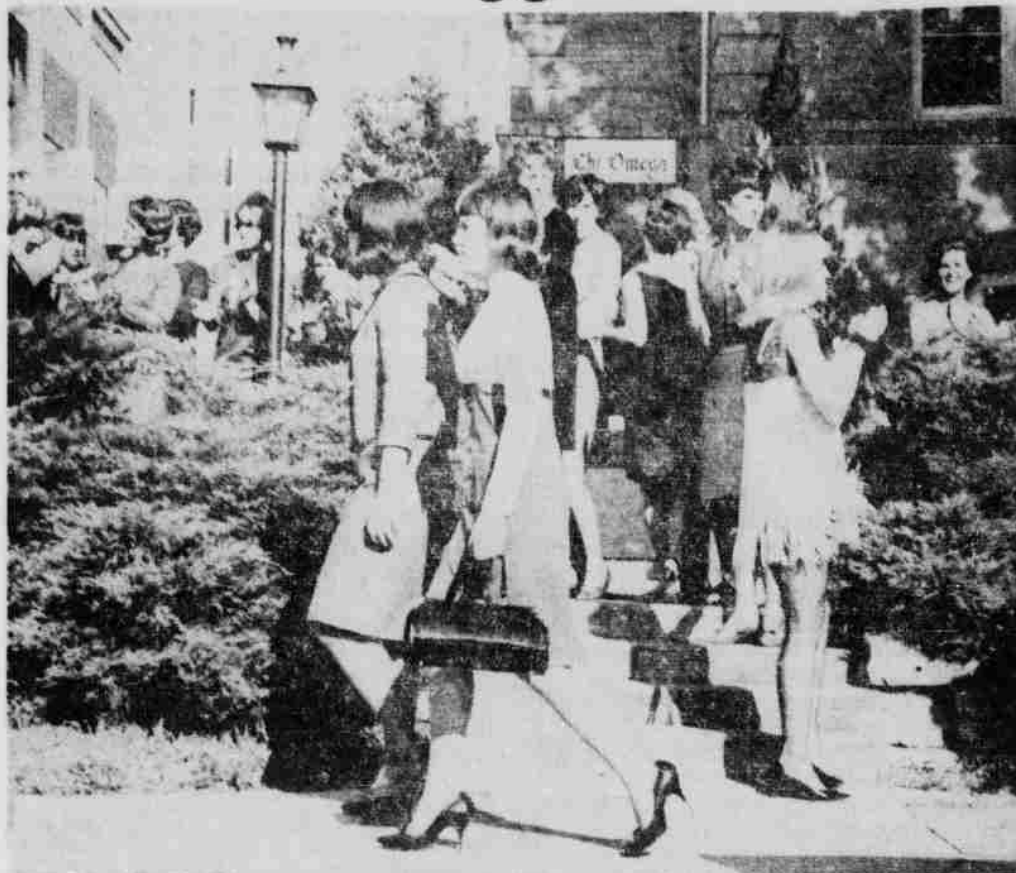


# Panhellenic Quota Ruling Results In 'Biggest' Rush



Skits repeated, songs resung, and smiles—always smiles are components of Rush Week; while rushees' tired feet send pain-waves to the brain and grimaces to faces.

"This is the biggest and best rush week we have ever had," commented Miss Madeline Girard, Panhellenic director.

With 655 women going through rush week, 513 pledged 17 sororities. This is an increase of 108 over 1964.

One of the main reasons for this increase was the resolution passed by Panhellenic which increased the ceiling for sororities to 90 women.

Phi Mu, going through rush week for the first time, and Sigma Telta Tau, which re-colonized last year, pledged 17 and 14 women respectively.

Alpha Phi received the largest pledge class with 43 new members, followed closely by Alpha Omicron Pi and Kappa Delta with 38, and Delta Delta with 36.

Zeta Tau Alpha pledged 35 while Kappa Alpha Theta and Alpha Chi Omega received 34; Delta Gamma and Alpha Xi Delta 33; Gamma Phi

Beta 32; and Pi Beta Phi 31.

Chi Omega pledged 30 Kappa Kappa Gamma 29; Alpha Delta Pi 28; and Sigma Kappa received 17.

Out of 630 men who went through rush week, 25 fraternities pledged a total of 518 men.

Pi Kappa Alpha, a national fraternity which colonized at NU this year, went through rush week for the first time and pledged a total of seven men.

The largest pledge class was taken by Delta Upsilon with 43, followed by Kappa Sigma with 32, and Sigma Alpha Epsilon with 29.

Beta Theta Pi and Triangle also received 29 pledges. Next in line is Beta Sigma Psi with 28 and Sigma Chi with 26.

Phi Delta Theta received 26; Phi Gamma Delta 25; Delta Sigma Phi 24; Phi Kappa Psi 23 and Chi Phi 22.

Sigma Phi Epsilon and Farm House received 21 new

pledges, followed by Theta Xi and Alpha Gamma Rho with 17 each. Sigma Nu and Alpha Tau Omega both received 16 pledges.

Sigma Alpha Mu received 15 new men Alpha Gamma Sigma 11; Theta Chi 9; and Acacia 8.

## Diane Messineo Wins Miss Rush Week Title



The year's first queen was crowned Saturday at the third annual Sigma Phi Epsilon Miss Rush Week Dance.

Diane Messineo, representing Gamma Phi Beta, was the final choice for the honor. She was judged first from among the 17 entries of each of the University's sorority pledge classes.

Next year's event may see only freshmen entering, according to sponsor, Sigma Phi Epsilon.

Last year's Miss Rush Week was Kathy Dworak of Pi Beta Phi.

## Faculty, Staff Attend Chancellor's Reception

Approximately 1,500 faculty members, housemothers and members of the University managerial-professional staff attended the annual Chancellor's Faculty Reception Monday evening at the Nebraska Union.

The reception was co-sponsored by Chancellor Clifford Hardin and the University Board of Regents.

## Lincoln Hears Talks On People-To-People

Lincoln will host two People-to-People leaders Saturday.

Jean-Louis Baudoin of Brussels, Belgium and Don Faurot of Kansas City will meet with educational and civic leaders regarding projects which promote international understanding.

## Campus Calendar

TODAY

UNION public relations committee 2 p.m., South party room, Nebraska Union.

AWS Upperclass Activities Mart, 2 p.m., North conference room, Nebraska Union.

UNION trips & tours committee 2:30 p.m., 232 Nebraska Union.

BUILDERS Calendar & Directory, 3:30 p.m., 232 Nebraska Union.

BUILDERS College Days, 3:30 p.m., 234 Nebraska Union.

YWCA Girls' Club, 3:30 p.m., 334 Nebraska Union.

ASUN Student Senate, 4 p.m., Nebraska Union auditorium.

RED CROSS 4:30 p.m., 232 Nebraska Union.

UNION film committee 4:30 p.m., 234 Nebraska Union.

UNION public relations committee, 4:30 p.m., 235 Nebraska Union.

UNION music committee, 4:30 p.m., 332 Nebraska Union.

WOMEN'S DIVISION Chamber of Commerce, 6 p.m., Pan-American room, Nebraska Union.

IFC 7 p.m., conference rooms, Nebraska Union.

YWCA Adviser's Committee, 7 p.m., 235 Nebraska Union.

ALPHA PHI OMEGA, 7 p.m., 332 Nebraska Union.

GREEK ROLLERS LEAGUE, 7:30 p.m. South party room, Nebraska Union.

TOMORROW

CHI EPSILON exchange dinner, 5:45-7:15 p.m., 3rd and 4th floor Piper Hall.

DEBATE SQUAD 7:15 p.m., 103C Temple Building.

CHI EPSILON engineering student orientation, 7:30 p.m., 301 Stout Hall.

## Annual Dean's Tea Set For This Friday

The annual Dean's Tea for women students at the University will be held Friday from 3:30 to 5:30 p.m. in the Pan American Room of the Nebraska Union. This traditional tea welcomes new women students to the campus on behalf of the Dean of Women.

Receiving the students will be the associate dean of student affairs, Miss Helen A. Snyder; Miss Madeline Girard, Panhellenic director; and Mrs. Margaret Wenke, Mrs. Betty Cooper, Miss Mary Frances Holman, and Mrs. Pearl Hathaway, residence hall directors.

## Hardin Welcomes Freshman Class

The 4500-strong class of 1965 nearly filled the Coliseum to hear Chancellor Clifford Hardin praise them as "not only the largest class, but also the best."

"I can predict that a higher percentage of you will graduate than any other previous class," Hardin said.

The chancellor's speech followed a welcome by the president of the Associated Students of the University of Nebraska, Kent Neumeister.

Neumeister urged students to participate in sports, music publications and as many of the University's activities as possible.

"You will leave the University a much richer person than when you arrived," he said. "Education will help you learn how to live."

Also at the Convocation were G. Robert Ross, Vice Chancellor of Student Affairs, and Lee Chatfield, Director of Junior Division.

Hardin stressed the necessity of being a part of the "atmosphere" of the University.

"The potential returns from a good record in college are the greatest they have ever been," he said. "A successful college student is proud of his university and grateful for being a part of it."

The University is one of 25 schools with the greatest number of persons in the Who's Who listing for 1965, he said. The University is an early member of the American Association of Universities, an organization of 41 of the nation's leading institutions.

"You are joining a great heritage and tradition at this University," Hardin said.

The growth of the University in the next few years will be greater than in any other period of time, predicted the chancellor.

Construction at the University will be a continuous process during the years to come, he said.

"All the time you'll be here, there'll be piles of mud you'll have to step around — at least I hope so," he said.

A few of the University's

special programs include the correspondence school ("the largest one of its kind, with over 15,000 participating"), the extension service, the University television station, KUON, and Sheldon Art Gallery, which houses "the finest collection of contemporary American art in the middle part of the United States."

"These are a few of the reasons that we are able to attract some of the nation's top scientists and scholars," he said.

"What is being offered to you, simply stated, is an opportunity to learn," Hardin said.

"I hope I will see every one of you four years hence in a graduation gown," he said. "And I hope you will always be proud to be a Cornhusker."

## Bus Shortage Over; Red Rider Gets Help

The Big Red Rider, the University's intercampus bus, which suffered from chronic overcrowding last year, now has a helper. At the request of the University, the city bus line assigned a second bus to the run to handle the overflow of passengers.

## 'Pikes' Take First Class

Pi Kappa Alpha, the newest addition to the growing list of fraternities at the University, stresses the fact that only by participating can one develop to his fullest capabilities.

Following this ideal, the "Pikes" are plunging into the social, academic and athletic life at the University.

"We are stressing social events, such as house parties, and University sponsored programs," commented Neal Hansen, resident counselor.

"We have also accepted an invitation from the Omaha chapter to attend the highlights of the social season at the University of Omaha," he added.

"We intend to participate in all intramural activities except football," said Dave Schroeder, acting house president. "We don't feel we have enough big men to compete."

"I believe that scholarship is the primary purpose for college enrollment and that learning requires work, and therefore I shall be a worthy student." This is the third statement in the Creed for Pi Kappa Alphas. Living up to their creed, the Nebraska "Pikes" have two men in law school out of an active class of 10.

\$5.00

HERTZ

WEEKEND SPECIAL

PER DAY AND 10c A MILE

For a new Chevrolet for a 24-hour period.

on campus call Jim Ganser

DAY: 435-3957 NIGHT: 423-2420

HERTZ RENT A CAR

let HERTZ put you in the driver's seat!

Joseph's

College of Beauty

now brings you all the finest beauty services in our school clinic . . . 11th & P, downtown. Low clinic prices . . . special supervision . . . fresh pleasing atmosphere.

for appointment phone

466-2385

# Get your Free Nebraska Cornhusker

HUSKERS 1965 FOOTBALL SCHEDULE			
HOME		AWAY	
Sept. 18 Texas Christian	Sept. 25 Air Force Acad.		
Oct. 2 Iowa State	Oct. 16 Kansas State		
Oct. 9 Wisconsin	Oct. 30 Missouri		
Oct. 23 Colorado	Nov. 13 Oklahoma St.		
Nov. 6 Kansas			
Nov. 25 Oklahoma (Nationally Televised)			
CITY NATIONAL BANK OF LINCOLN			

## Football Schedule KEY CASE! WHILE THEY LAST...

This bright red plastic key case is yours, FREE, compliments of City National Bank of Lincoln. It holds keys securely and prevents keys from hooking or tearing clothing, inside pockets and purses. It's yours FREE, no obligation. Just drop in to the bank at 14th and "N" Street.

