

This is an artist's sketch of the new \$1,156,000 structure for the Department of Music.

Seventy Years! A Long Wait For School Of Music

By Barbara Trebelhorn

"The recital hall when completed will be of the latest and most approved design," according to the bulletin of the School of Music, published in 1895, a year after the building's completion.

That's just how long the School of Music has been waiting for improvements, according to Professor Emanuel Wishnow, Chairman of the department of music.

Since the 1930's when the School of Music was officially acquired by the University, it has been given priority rating in the appropriation of building funds several times, Wishnow said.

"Our hopes soared high and were dashed low," he added, until in 1964 the funds were appropriated and the planning for the new building began.

Construction of the new building began June 21, as bulldozers moved in to clear the sight on the southwest corner of 11th and R Sts.

The streets around the construction site have been blocked off and will remain that way, according to Noel L. Smith, University construction engineer. The new structure, Smith said, will extend into both streets. Two cul-de-sacs, courts to enable cars to make U turns, will be constructed on R St. and one on 11th.

The cost of the structure, designed by architects Hazen and Robinson, will be about \$1,156,000, according to Smith. Olson Construction Co. is the contractor.

The new building, which will be air-conditioned and sound proofed, was begun because nothing could be done in the old building, to expand. Its condition and the large numbers of students made it necessary, Smith said.

"For many years" Wish-

now commented, "people have been telling us that we should employ a full time plasterer to make the necessary repairs." The fire marshal has ordered constant improvements, he added.

"At present, classrooms are overcrowded and practice rooms are too few," Wishnow continued. Because of the limited space, classes are much larger than we would like them to be, he added.

The new building has been designed to meet these problems of space and overcrowded facilities, according to Wishnow. It will contain 30 faculty teaching studios, ten graduate studios, 50 practice rooms, and five large classrooms.

Four large rehearsal rooms, two seating 150 instrumentalists; one choral room seating 300 and an ensemble room seating 50 will be on the ground floor.

The conservatory, or recital hall, which will be constructed upon completion of the new building in 1966, will contain larger rehearsal rooms and a recital hall seating 850, according to Wishnow.

Salt-Wahoo

(Continued from P. 1)

The Corps of Engineers will mend a co-ordinated program of flood-control development. But the program was to be unco-ordinated for some time. The Army Corps of Engineers and the Soil Conservation Service under the Department of Agriculture developed separate flood-control plans based on different reasoning.

The Corps of Engineers was most concerned with protecting the great number of people and the property in Lincoln. Thus the Corps plan was to construct large dams and to do major channel work mostly in the immediate vicinity of Lincoln to prevent future floods.

The Soil Conservation Service plan was focused on rural areas. A system of small dams and other retaining structures plus the introduction of conservation measures miles upstream from Lincoln and other cities would slow down runoff and thus provide the best means of flood prevention, the SCS reasoned.

Both plans were released within months of each other. Members of both agencies praised their own plan and criticized the other agency's plan.

The co-operation that had been hoped for never materialized. Ten years passed.

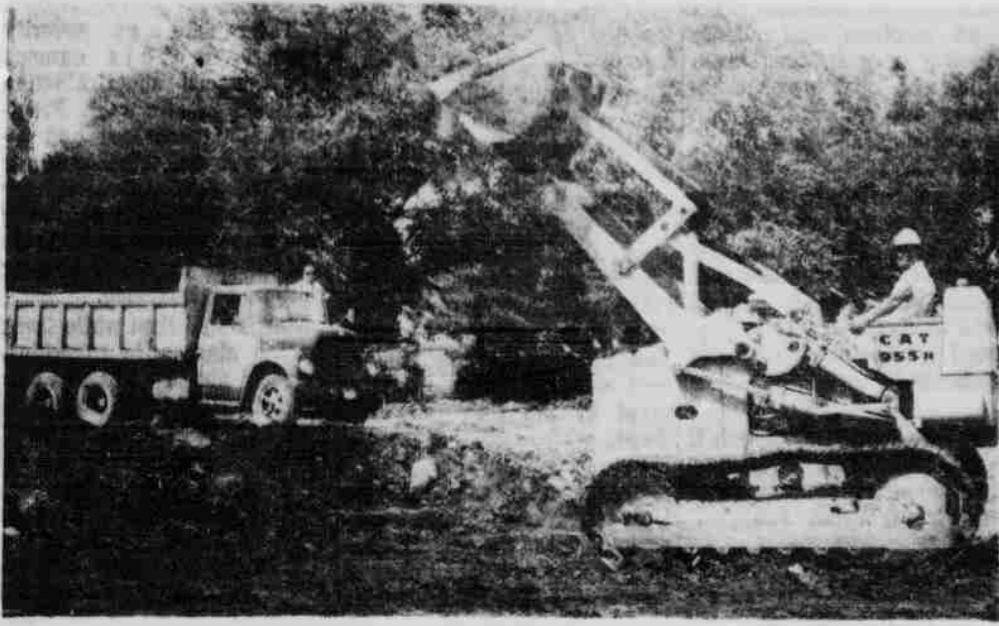
Then in 1960, under the leadership of the Salt-Wahoo Watershed Association and other civic-minded groups, a co-ordinated plan was worked out. Voters in the newly-formed Salt-Wahoo Watershed District overwhelmingly approved a three-quarter mill levy on all real and personal property to provide funds.

As the co-ordinated plan is being executed, Hal Schroeder and his associates are confident that the completed Salt-Wahoo Watershed development will cut down the number of floods in the basin. For the 97 floods on Salt Creek and its tributaries between 1900 and 1953—sixteen of which were major disasters—were too many, Schroeder believes.

Sheldon Gallery

Time Schedule

Sheldon Memorial Art Gallery will be open to visitors from 10 a.m. to 10 p.m. Tuesdays; 10 a.m. to 5 p.m. Wednesdays through Saturdays; 2 p.m. Through 5 p.m. Sunday; and will be closed Mondays.



Workmen clear the ground at 11th and R Streets to make way for the new structure.

Sky Shows New To Visitors; Don't Know What To Expect

By LYNDA INMAN

"Forty per cent of the people that come to the planetarium don't know what to expect," according to Allan Griesemer, director and narrator of the Mueller Planetarium Sky Shows.

Griesemer explained that some people expect to see plants growing or expect that the roof will be rolled back and they will view the skies out in the open air.

"What actually happens is very simple," said Griesemer. "One light bulb is used in the projectors and plates with up to 1000 holes drilled in them portray the stars."

Special plates are used to depict the Milky Way Galaxy, planets, moon and sun. Bright stars are shown by the use of special lenses. The projectors turns a complete revolution in each show to illustrate the stars trip from the West until they fade out in the

eastern sky "in the morning."

"Some people think that it is the chairs in the planetarium that revolve, not the projector," smiled Griesemer.

"The summer thunderstorm, complete with lightning flashes, has always been very popular. The Christmas show which features the story of the Christmas stars run for one month around Christmas and is also very popular," said Griesemer.

Two weeks of planning go into the shows, which are changed seven times a year. This allows time for special projectors to be installed for special effects.

Summer sky shows are presented at 8 p.m. Wednesday; at 2:45 p.m. Monday through Friday and at 2:30 and 3:45 p.m. on Saturday and Sunday. Admission is 25 cents for students and 50 cents for adults.

Summer Schedule LUTHERAN WORSHIP On Campus SUNDAY 9:30 A.M.

Lutheran Student Chapel (ALC-LCA)
535 N. 16th A. M. Petersen, Pastor
University Lutheran Chapel (Missouri Synod)
15th & Que St. A. J. Norden, Pastor

NEBRASKA UNION BARBER SHOP



ELMER



FRANK



JIM



BOB

AIR CONDITIONED COMFORT

TELEVISION

Hours:

Mon.-Fri.—8 a.m.-5:15 p.m.

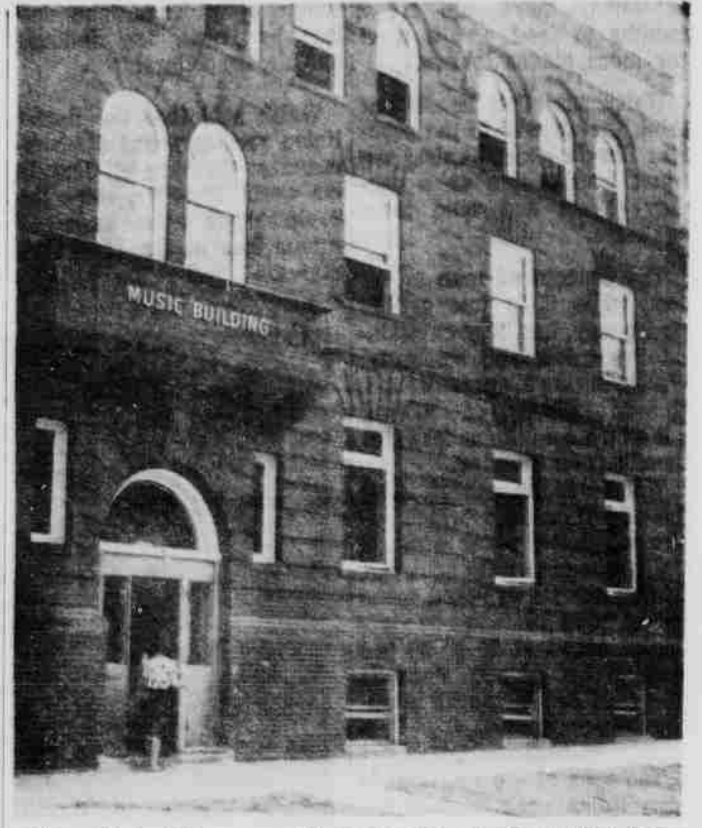
Sat.—8 a.m.-5:00 p.m.

ON CAMPUS FOR YOUR CONVENIENCE

appointments
477-8711
extension 2459

or

just walk in
Nebraska Union
lower level



The old building, now 70 years old, stood waiting for its recital hall since 1895. That wait has terminated with the building of a complete new structure.

Session Today On Adolescents

"The Unrealized Potentials of Adolescents" will be the topic under discussion this afternoon as a part of an "Assessment of Potentials" symposium being held.

The session, which will be held at 1:30 at the Nebraska Center for Continuing Education at 33rd and Holdrege, will be open to University faculty and students.

The audience will be permitted to listen to the symposium participants as they discuss this topic under the chairmanship of Dr. Robert Havighurst, professor of education and human development, University of Chicago.

Tennis Sign Up Ends Tomorrow

The annual summer school men's tennis tournament conducted by the Department of physical education for men will begin Thursday.

The tournament is open to all University undergraduate and graduate students and faculty, who have never been awarded a college letter in tennis for intercollegiate competition.

Trophies will be awarded to winners in both singles and doubles. Medals will be awarded to the runner-up. Any men interested in entering the tournament should sign up in room 102, Physical Education Building before 4 p.m., tomorrow.



GOOD NEWS!
Jewelry Tax
REMOVED

LOWEST PRICES IN YEARS

10% OFF on

- DIAMONDS AND PRECIOUS GEMS
- DIAMOND JEWELRY
- STERLING SILVER
- SILVERPLATED HOLLOWWARE
- WATCHES AND CLOCKS
- CULTURED PEARLS
- GOLD JEWELRY
- COSTUME JEWELRY
- HANDBAGS