

Lawrence . . . tests solubility of milled soap.

Summer Work Program Helps Future Engineers

Three University students took part in a career-designed summer employment program offered by Procter and Gamble to a select group of engineering and chemical students.

Roger Schwabauer and Roger Egan participated in the summer program at Procter and Gamble's Kansas City plant. Bill Lawrence worked at the Long Beach plant. Richard DeVries, assistant professor of civil engineering, also participated in the Kansas City program.

The program is designed to show the student the difference between college lecture halls and labs and actually working conditions of an industry.

The program is held annually in fourteen of Procter and Gamble's manufacturing

plants throughout the country, and in the technical divisions in Cincinnati (Research & Development, Engineering and Industrial Engineering).

The plan combines well-paid summer employment with the advantages of learning industrial methods and operations in on-the-job projects. Each student is able to preview management and technical processes of industry at work and test his own career aims by participating in plant and laboratory operations.

Under the guidance of a production group manager, each college trainee was individually assigned a number of projects involving problems currently faced by the plant.

After a brief orientation in methods of operations, the summer men were assigned projects in such distinct career fields as plant management, engineering and industrial engineering.

Each project assignment

emphasized close coordination and teamwork with group managers, department managers and technical operators.

In addition to their project assignments plant trainees participated in MATRIX, a management simulation game.

MATRIX, which stands for Management Trial Exercise, lasts a week and presents a non-computerized exposure to the variety of challenges facing a Procter and Gamble plant manager.

One of Lawrence's plant projects was to discover the cause of "hard specks" in finished bars of milled soap. After sampling and testing variables in the soap drying process, he recommended a plan of improved procedures with cost estimates.

Schwabauer participated in the MATRIX program, in addition to handling a variety of plant projects, including full responsibility for production of a Dash special pack.

Egan's projects included statistical control of one of the important ingredients in synthetic detergents.

After the summer work and seeing what kind of work they would be doing in industry, the students returned to the University to complete their requirements for graduation.

Campus Calendar

TODAY
UNION Record-Lending library open noon-1:00 p.m. across from Union Program Office, Student Union.
PLACEMENT LUNCHEON 12:30 p.m., 241 Student Union.
AWS COURT 4:30 p.m. South Conference Room, Student Union.
BUILDERS publicity 4:30 p.m., 232 Student Union.
UNION Contemporary Arts Committee 4:30 p.m., 234 Student Union.
UNION Trips and Tours committee 4:30 p.m., 235 Student Union.
YWCA CABINET 4:30 p.m., 332 Student Union.
ALPHA LAMBDA DELTA Initiation 4:30 p.m., 241 Student Union.
INTER VARSITY EXEC. 6:30 p.m. North Party Room, Student Union.
AUF 6:30 p.m., 334 Student Union.
CORNHUSKER PICTURES 6:30 p.m. Pan American Room, Student Union.
YOUNG REPUBLICANS 7 p.m. South Party Room, Student Union.
STUDENT COUNCIL Quiz Bowl 7 p.m. Auditorium, Student Union.
ETA KAPPA NU Smoker 7 p.m. Conference Rooms, Student Union.
YWCA Seminar Group "What Is Love" 7 p.m., 232-234 Student Union.
ALPHA PHI OMEGA 7 p.m., 332 Student Union.
DELTA SIGMA PI Interviews 7 p.m. West Cafeteria, Student Union.
LAMBDA TAU 7:30 p.m., 235 Student Union.
RADIO CLUB 7:30 p.m.
MUSIC FRATERNITY CONCERT 7:30 p.m. Ballroom, Student Union.
AUF Activities Queen Interviews 8 p.m., 334 Student Union.
MU PHI EPSILON 8:30 p.m., Pawnee Room, Student Union.

Ag Team Wins

The University livestock team won the Midwest Livestock Judging contest at Manhattan, Kan., for the second year in a row.

Team members are Galen Frenzen, Keith Gilster, Virgil McClatchey and Dale Travniczek. The team is coached by Professor Richard Warren.

First in beef and sheep judging and third in swine judging, the team gained 4,554 points.

College Campuses Abroad Offered By Michigan State

Florence, Madrid, Barcelona, Cologne and other world-famous European cities will become the winter, spring and summer campuses for American college students participating in a Michigan State University program of language study abroad.

In cooperation with the Stiftung fur Europäische Sprach- und Bildungszentren, the MSU Continuing Education Service is offering intensive programs in French, at Lausanne and Neuchatel, Switzerland; in Spanish, at Barcelona and Madrid, Spain; in German, at Cologne, Germany; and in Italian, at Florence, Italy.

In addition to classes in conversation, composition, grammar and reading, participants will visit points of historic and geographic interest which become the topics of lectures and seminar-type discussions covering cultural, political, social and economic institutions of the country in which they reside.

To promote use of the foreign language and provide them with opportunities to better understand their European counterparts, American participants will attend classes and share living accommodations with students from Germany, France, Italy, Spain, Denmark, Sweden and Great Britain.

The program includes intensive language instruction taught by native speakers of the language, during 25 hours each week of classroom instruction, composition, gram-

mar, reading and conversation. Classes consist of no more than eighteen students grouped by proficiency.

Participants are tested upon their arrival and grouped, for proficiency. The normal instructional day consists of six hours of both compulsory and optional classes.

Air transportation to and from Europe, leaving from New York City, will be provided on a group basis. The cost of round-trip air transportation and travel within Europe to destination is included in the price quoted.

The 1965 winter session in French at Paris will be held January 11-April 1 and costs \$985.40. The winter session in French held in Lausanne, Switzerland, will cost \$823.20.

German at Cologne, Germany, will cost \$771.20. Italian at Florence, Italy, for 13 weeks will cost \$829.20. Spanish at Barcelona, Spain, will cost \$675.20. The 1965 winter sessions are all to be held January 11-April 10 for a 13 week period.

Mountain hiking trips, ski weekends, opera, theatre and symphony performances are but a few of the extra-curricular activities arranged for participants by the European staff. An attempt is made to engage American students in the full range of leisure-time activities for which Europe is justly famous.

Additional information about the winter, spring and summer programs may be obtained by writing AMLEC, 12 Kellogg Center, Michigan State University, East Lansing, Mich.

Educators To Discuss Vocational Education

More than 300 Nebraska school administrators will discuss the future of vocational education today and tomorrow at the Nebraska Center.

The educators, from all parts of the state, will meet at the annual joint conference of the Nebraska Association of School Administrators and the University Department of educational administration.

A highlight of the conference will be the address of Dr. Hobart Sommers of Chicago, a representative of the Department of Health, Education and Welfare.

Sommers, former assistant superintendent of the Chicago public school system, will speak at 10 a.m. Thursday on the future and needs of solid vocational education program

to face an anticipated unemployment problem.

Thursday afternoon sessions will deal with needs of young people who do not attend college but wish training in the vocational education area.

Dr. Frank Henzlik, administrator and professor at the University of Miami, will address the assembly at the 6:30 p.m. banquet Thursday.

Dr. Max Hansen, assistant professor of industrial arts at the University will speak at the 9:30 a.m. general session Friday.

Nebraskan Applauds

Donald E. Watson, a University graduate student, has been awarded a \$4,200 U.S. Steel Foundation fellowship including \$2,100 a year for two years, and payment of tuition and other fees.

Zeta Tau Alpha's pledge class officers are: Sharon McLeod, president; Pam Oswald, vice president and social chairman; Susie Yetman, secretary; and Genia Bolich, junior Panhellenic delegate.

Towne Club pledge officers are: Dottie Dering, president; Doris Lohr, vice president; Jana Kammerlohr, secretary-treasurer.

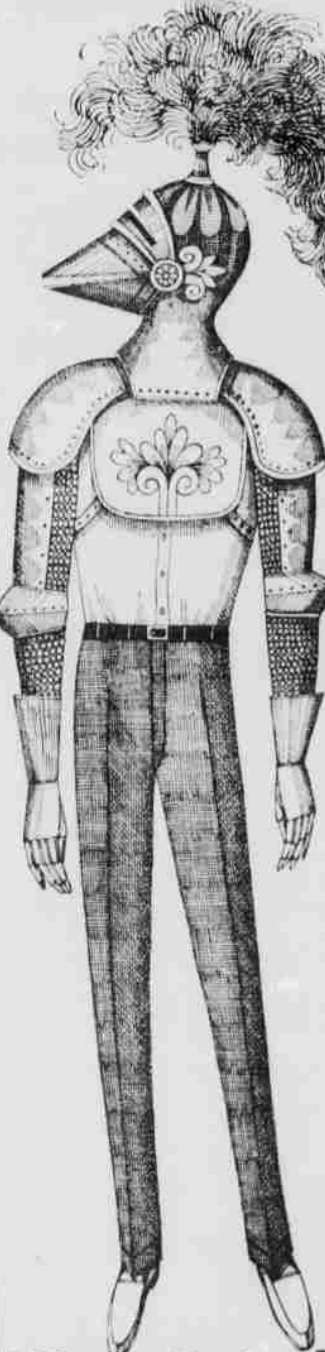
Chi Phi pledge class officers are: Bruce Jones, president; Jerry Belmont, junior IFC representative; Tom Gilroy, secretary-treasurer; Gaylord Anderson, social chairman.



LITTLE MAN ON CAMPUS



for campus knights ..and days



Wear Dated Post-Grad slacks by h.i.s.

You're probably too tall to fit into a suit of armor but just right for the long and lean look of these pants. Post-Grads trim you up and taper you down. They're noble and mobile and absolutely authentic. Neat belt loops. Narrow-but-not-too-narrow cuffs. Shaped on-seam pockets. You can look better than Galahad for a pittance since they cost but \$6.98 a pair in 55% Acrilan® Acrylic, 45% Rayon. Buy 'em and voicks!

Pearle Optical

OVER 100,000 PEOPLE HAVE CHOSEN PEARLE OPTICAL SERVICE

Quality Materials and Workmanship

Only the finest American-made lenses and the most exciting workmanship are used in compounding your prescription. Experienced personnel inspect your lenses to insure complete accuracy.

Where it's SAFE to SAVE on your Glasses!

FIRST-QUALITY GLASSES

AS LOW AS \$12⁵⁰

INCLUDES finest quality American-made lenses . . . Nationally Famous Frames and Carrying Case.

ANY DOCTOR'S PRESCRIPTION ACCURATELY FILLED

VERILITE CONTACT LENSES

ONE PRICE ONLY: \$65⁰⁰

There is no finer Contact Lens made no matter how much you pay . . . even \$120 . . . \$175 . . . \$200.

Nationally Famous FRAME STYLES

Are Your Present Glasses COMFORTABLE...?

VERILITE CONTACT LENSES

Budget Terms Available at No Extra Charge Satisfaction Guaranteed!

Now... 3 Offices to Serve You!

UNION OFFICE: 1132 "O" STREET PHONE 432-7328
 GRAND ISLAND: 207B WEST THIRD PHONE 263-3308
 WASHINGTON: 609 WEST SECOND PHONE 5-3127

Pearle Optical

Dispensing Opticians

Crasley International imports

We are importers of

- Decoratives
- Furniture
- China
- Jewelry
- Mens Wearing Apparel
- Ladies Wearing Apparel
- Linens
- Dolls
- Porcelain
- Leather
- Imports from around the World

SHARP Bldg. 204 S. 13th St.
 PHONE 432-8326
 OPEN THUR. NIGHTS TILL 9:00